

Super-Trex® 90° Molded Quick-Connect™ Cord Sets

● 600 Volt ● Heavy Duty Design ● Meets IP69K Requirements ● RoHS Compliant

TPC
NEW
PRODUCTS



FEATURES AND BENEFITS

10, 12 & 14 AWG Molded 90° Quick-Connect Cord Sets Hold Up to Washdowns

IP69K rated, provides a fast and durable method for connecting and disconnecting electrical motors and electrical equipment.

Heavy Gauge Brass Sleeves and Contact Pins

Provides superior long life electrical contact. Ensures electrical continuity through repeated disconnects.

Receptacle has Stranded, Tinned Copper Pigtails Insulated with 125°C Cross Linked Polyethylene

Provides excellent oil and heat resistance.

Cord Sets Made with Super-Trex Ultra-Gard™ Portable Cord, Rated 90°C

Provides the best defense against tearing, abrasion, impact, oil, ozone and most chemicals. Flame and heat resistant. Extreme all-weather flexibility.

Plug Body is Designed with Super-Trex TSE Compound

Provides super resistance to oil, ozone, and most chemicals. Flame and heat resistant. Extreme all-weather flexibility.

ORDERING INFORMATION

90° Female Cord Sets

AWG	3'	6'	12'	DESCRIPTION
10	CX14D64F003N	CX14D64F006N	CX14D64F012N	4 Pole
12	CY13D65F003N	CY13D65F006N	CY13D65F012N	3 Pole
	CY14D66F003N	CY14D66F006N	CY14D66F012N	4 Pole
14	CZ13D67F003N	CZ13D67F006N	CZ13D67F012N	3 Pole
	CZ14D68F003N	CZ14D68F006N	CZ14D68F012N	4 Pole

ORDERING INFORMATION

Nylon Receptacles – Straight Male

AWG	PART NO. 1/2"	PART NO. 3/4"	DESCRIPTION
10	84210N2	84210N4	4 Pole, 25 AMPS
12	84230N2 84240N2	84230N4 84240N4	3 Pole, 25 AMPS 4 Pole, 20 AMPS
14	83300N2 83400N2	— —	3 Pole, 18 AMPS 4 Pole, 15 AMPS

BUILD YOUR OWN MOLDED QUICK-CONNECT CORD SETS

Type	Size	Ends	Poles	Head configuration	Cable	UOM	Length	Coupling
C	Y	1	4	D	66	F	006	N

Part No.

Coupling
N=Nylon

Cable Length
(3 characters) example:
5 = "005"
50 = "050"
500 = "500"

Unit of Measure
F=Feet
M=Meters
A=Inches

Cable Type – must be two digits
Super-Trex®
64 = 10/4 - 87201
65 = 12/3 - 87195
66 = 12/4 - 87200
67 = 14/3 - 87194
68 = 14/4 - 87199

Head Configuration
D = Female 90°

of Poles
3 or 4

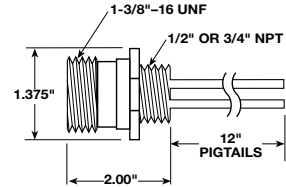
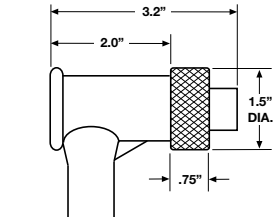
Single Ended
1 = Single End

Size
X = 10 AWG
Y = 12 AWG
Z = 14 AWG

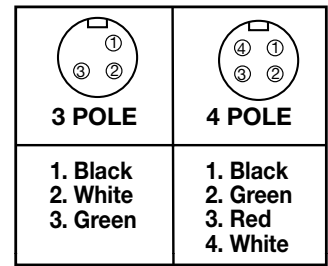
Type
C = Cordset

In the sample part number above, **CY14D66F006N** is a 90° molded Quick-Connect, single ended, 4 pole, female, using 12/4 Super-Trex cable (87200), 6 ft. long, with a nylon coupler.

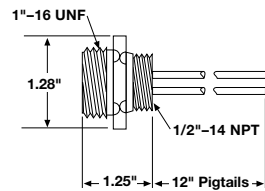
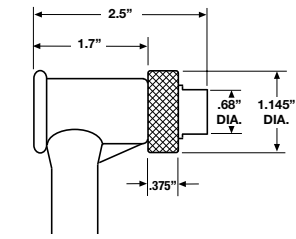
10 & 12 AWG DIMENSIONAL AND WIRING INFORMATION



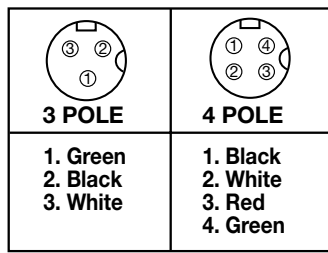
FACEVIEW OF MALE RECEPTACLE



14 AWG DIMENSIONAL AND WIRING INFORMATION



FACEVIEW OF MALE RECEPTACLE



TPC WIRE & CABLE CORP.

9600 VALLEY VIEW RD.
MACEDONIA, OHIO 44056

800-521-7935 FAX 866-528-2930
CANADA 800-545-0122 MEXICO 800-290-5614
www.tpcwire.com