

4 Ideas for Summer Fun

1. Invent a holiday. Decide what it should be about, choose the date for it, and have a party!
2. Cool off with a snowman sundae. Decorate a scoop of ice cream with candies and fruits.
3. Play ice checkers! Use 12 regular ice cubes and 12 cubes made with a grape frozen inside each one. Use chalk to draw a checkerboard on a sidewalk. To “king” a checker, place a penny on top of it. Play until the checkers melt!
4. Make a “Summer 2012” playlist of songs.



4 Ways to Keep Boredom Away

1. Invent a new form of tag using teams or pairs of people instead of individuals.
2. Use acrylic paints, ribbon, and beads to customize a pair of flip-flops.
3. Grab some brooms and a tennis ball, and play hockey outside.
4. Make postcards using cardboard and funny pictures, and send them to friends and relatives.



Art You Can Eat!

Wash colorful fruits and vegetables. Ask an adult to help you cut them into small pieces. Arrange clean lettuce leaves on a large dish or tray. Make a design using the fruit and veggie pieces. Take a photo of your masterpiece, then invite your family to help you eat it up!



Make a Splash This Summer

1. Play sponge tag! Whoever is *It* uses a soft, wet sponge to tag other players. (*It* cannot throw the sponge.)
2. Instead of putting ice cubes in your lemonade, use frozen grapes and berries for a sweet twist.
3. Fill a wading pool with water, and create “splashdance” routines with friends.
4. For your next family dinner, make a “Floating Water Lilies” centerpiece. Find directions on HighlightsKids.com.



ILLUSTRATION BY DAVID HELTON

Try This!

Ready, Set, Melt!

Hold an ice-melting race. Put an ice cube into each glass, as shown. Which ice cube melts faster?



Empty

Water

Answer: The ice cube in the water should have melted faster. That's because each ice cube melts as heat moves in from its surroundings, and water carries heat faster than air does.

PHOTO BY GUY CALL ASSOCIATES, INC.

Try This!

Ice Cube Glue

By Lois Wickstrom

Over a plate, press the flat sides of two ice cubes together. Slowly count to 30, then let go of one ice cube. Why do they stick together?



ILLUSTRATION BY RUTH J. FLANIGAN

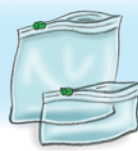
Answer: When you pushed two ice cubes together, you created pressure between the two flat sides. Pressure melted the ice, making a thin layer of water in between. When you released the pressure, the water refroze, “gluing” the two cubes together.

Chocolate Ice Cream

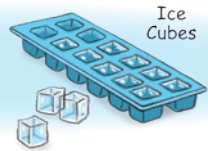
By Laura J. Colker



You Need



Zippered Plastic Bags



Ice Cubes

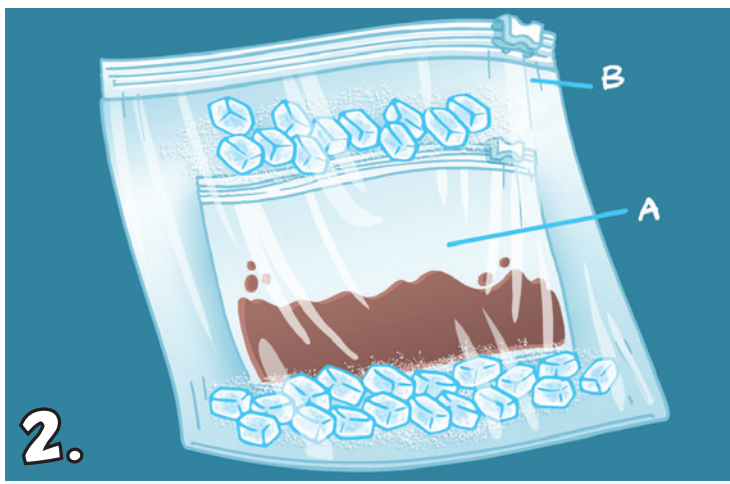


Makes one serving



1.

Pour $\frac{1}{2}$ cup of chocolate soy milk and 1 tablespoon of sugar into a quart-sized zippered plastic bag (Bag A). Squeeze out the air and zip it shut.



2.

Add ice cubes to a gallon-sized zippered bag (Bag B). Sprinkle 6 tablespoons of salt on the ice. Put Bag A on top of the ice. Add more ice and salt. Zip Bag B shut.



3.

Pull on a pair of gloves and **shake, shake, shake** the bag for 8–10 minutes or until the mixture freezes. Keep shaking until it gets thick. It will happen!