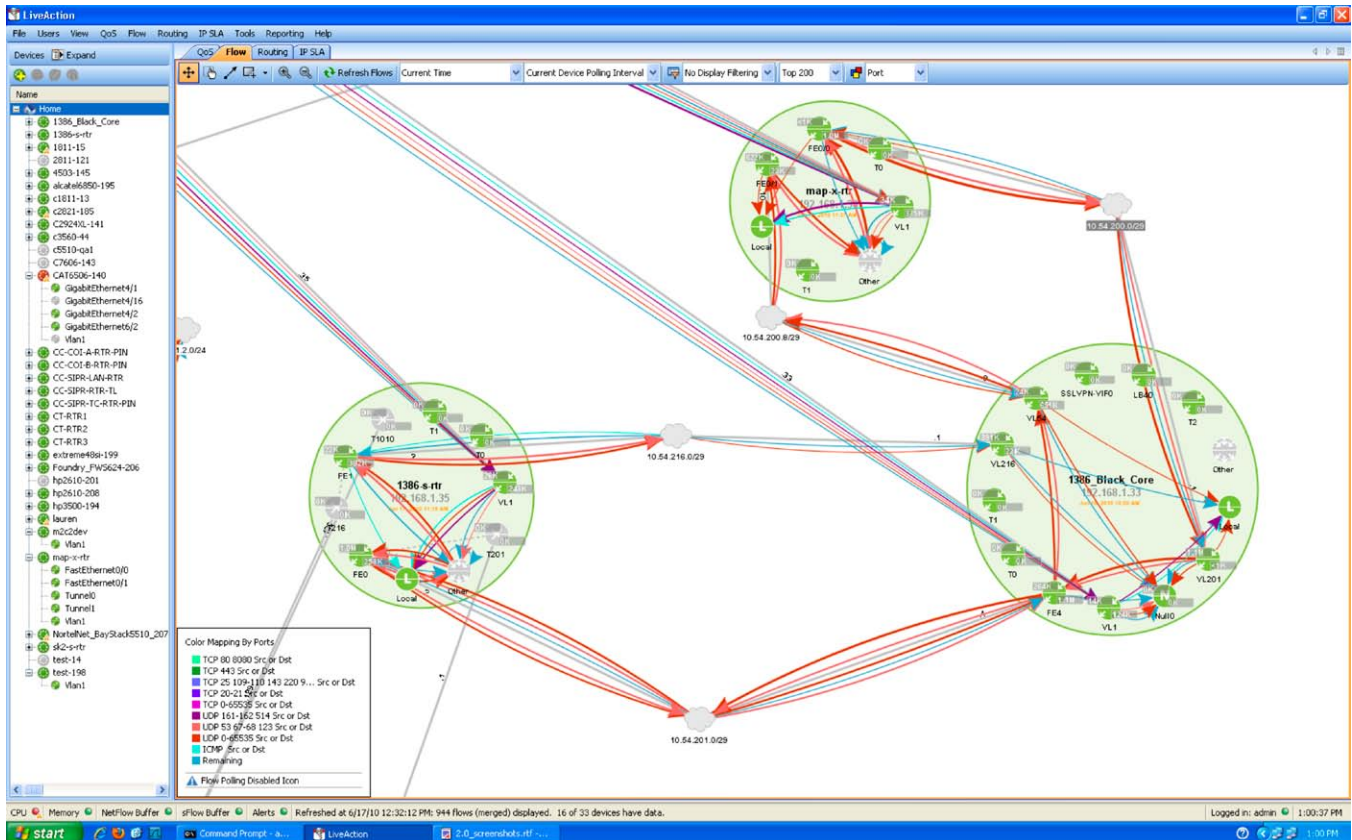


LiveAction™

All-In-One QoS Software—CCIE power at your fingertips



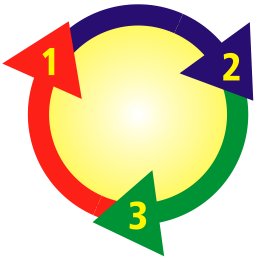
LiveAction system topology view

Multi-dimensional, visual understanding and control of your network

LiveAction software provides an intelligent and refreshingly different approach to network management. Combining extensive device knowledge with rich network visualizations, LiveAction captures your actual router and switch configurations to build a highly interactive “mental model” of your network. For the first time ever, you can literally “see” flows, routes, and QoS policies operating in real time—across your network topology and deep inside your devices. The result is an incredibly true and relevant understanding of your network for fast and accurate QoS management and troubleshooting for Unified Communications, Telepresence, and other collaborative services.

Benefits of LiveAction

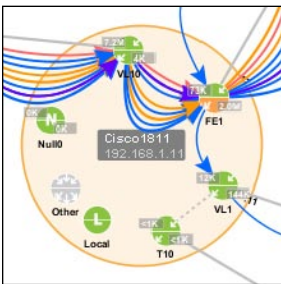
- Unsurpassed live situational awareness, visualization, and control of your network
- An all-in-one solution for QoS configuration and monitoring, troubleshooting, and traffic analysis
- A highly intuitive interface providing easy mastery of complex technologies and device configuration
- Proactive queuing threshold and traffic performance monitoring and alerting
- Full utilization of network and device features for a greater return on existing investments
- Increased proficiency, accuracy, and efficiency for network engineers at all levels of experience
- Numerous built-in templates, wizards, and user operations that are fully compliant with Cisco best practices
- Be up and running in under 15 minutes with no external appliances to install



All-In-One Solution

LiveAction brings unparalleled versatility and cohesiveness to your workflows.

Diverse functions such as analysis, configuration, and verification are all combined within LiveAction to provide a highly intuitive and cohesive working environment. This all-in-one approach makes optimizing the quality of your network extremely fast, efficient and highly effective.



Powerful graphical interface

Using the command line interface (CLI) provides none of the system-wide awareness and control needed in today's networks. With LiveAction's intuitive graphical interface, you can perform complex tasks quickly, confidently, and safely—and you can do this in REAL TIME on LIVE networks.

For those times when you need to use the CLI, LiveAction provides instant access to the CLI for any device and shows CLI previews of configuration changes made using LiveAction.

Interactive troubleshooting

Achieve faster troubleshooting of your network. Starting with the topology view you can instantly spot congested devices and interfaces on the network by their amber color. Double-clicking on these areas provides more detailed information and viewing options for troubleshooting deep into the device and interface levels.

LiveAction™ Software

What is LiveAction?

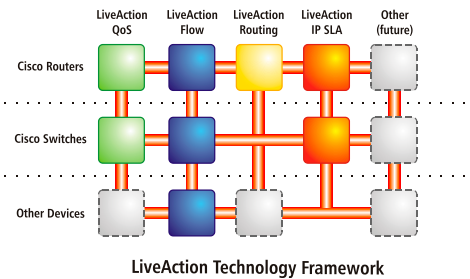
LiveAction is a multi-dimensional software system that combines an extensive device knowledgebase with a highly intuitive user interface to provide real-time situational awareness for network design, deployment, and troubleshooting. LiveAction is also the first product that makes Cisco routers easy to use. After a simple and quick installation on a standard PC or laptop, network engineers, regardless of their experience level, can immediately start to configure Cisco routers and troubleshoot live networks with complete ease and confidence. Currently LiveAction is available with technology modules for QoS, Flow, Routing, and IP SLA.

Get your IT staff up to speed in record time

It takes considerable certification training and hands on experience to build a quality IT department. LiveAction software accelerates the effectiveness of your team by giving them the information they need when they need it and enabling them to take action on this information. With LiveAction, network engineers can easily understand network functions and perform deep device configuration and monitoring regardless of their experience levels. This increases the capabilities of less experienced staff and allows highly experienced engineers to make better use of their valuable time and expertise.

Modular architecture for future needs

LiveAction is a flexible and scalable system that allows you to choose what you need, when you need it. This includes the number of devices you want to manage and the technology modules you want to use. Currently LiveAction supports packages with QoS, NetFlow, Routing, and IP SLA for Cisco routers and switches, and sFlow, J-Flow and MIB polling for multi-vendor environments.

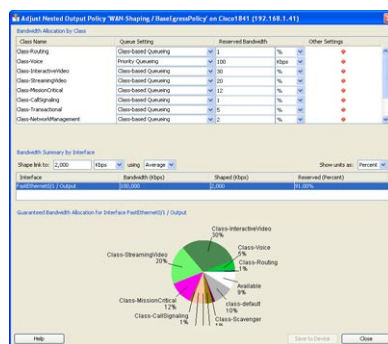


Unleash the power hidden inside your routers

Until now, some of the best features of your router such as QoS, flow data information, and IP SLA have not been fully accessible due to their sheer complexity and the inefficiencies of using the command line interface. LiveAction changes all of this with a powerful graphical interface that allows network engineers to exploit the full potential of these devices while diligently following manufacturers' best practices.

Historical Reporting for Traffic Flows and QoS

Historical reporting provides information that is essential for forensics, troubleshooting, and spotting trends in network activity. In addition to providing real-time views, LiveAction captures flow and QoS data on a continuous basis so you can recreate visually detailed network conditions from the past for any date and time you specify.



QoS Configuration

QoS configuration is a snap with LiveAction. Visually understand and adjust existing policies, create new policies from scratch, or choose from an extensive collection of templates based on Cisco models and best practices. Best of all, you won't have to use the command line for configuration.

Policy Based Routing (PBR) Configuration

With the Routing module you can easily configure and edit PBR and Set statements. Edit route map configurations and validate entries to ensure PBR rule compliance.

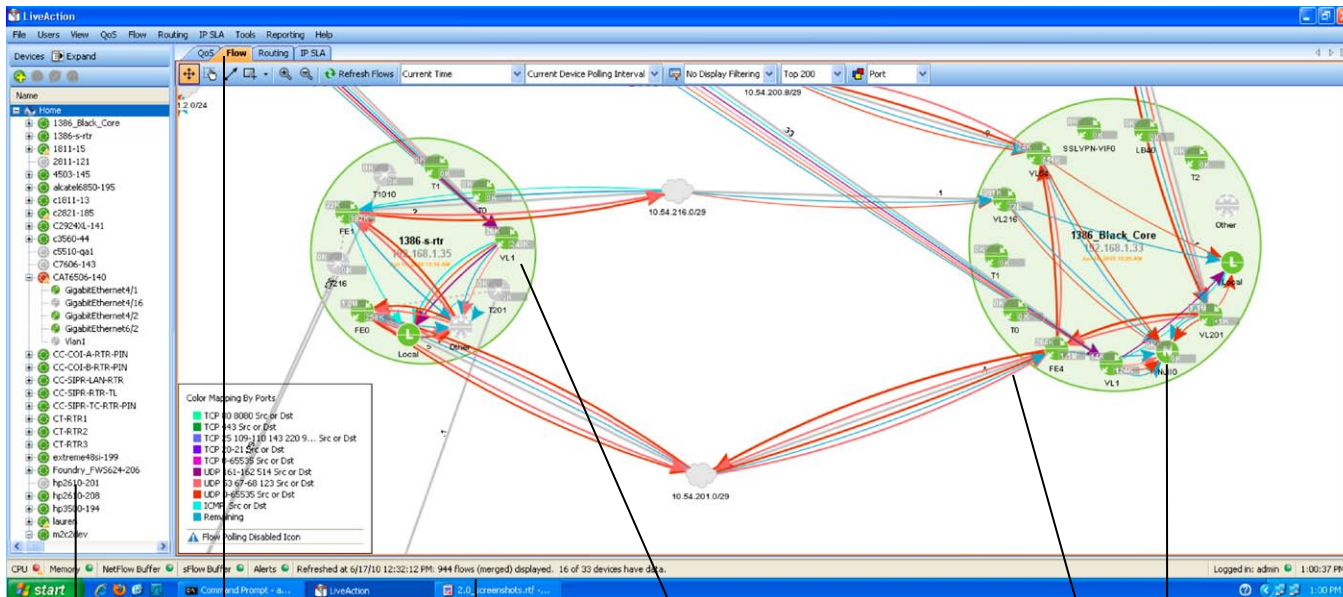
IP SLA

Set up and run IP SLA tests directly from LiveAction. Choose quick test for simple setup and fast results or full testing for greater detail and flexible test scheduling.

Rich visualizations, live data flows, multiple levels of detail... All provided in REAL TIME

Topology Level

LiveAction generates amazingly clear and detailed topology views of your network allowing you to literally “see” device connections, routes, flows, interface bandwidth, and more—all in real time. The interactive display lets you pan, zoom, and drag individual network elements across the screen for an even better view.



Hierarchical View

Left side of screen shows devices and interfaces in a hierarchical view. Scroll right for additional details.

Technology Tabs

Click on these tabs to switch from QoS to Flow, Routing, or IP SLA. Each tab provides a different overlay and user options specific to the selected technology.

Status Bar

Bottom of screen includes status indicators for CPU, memory, flow buffers, alerts and more. Alerts can also be sent via email for remote notification.

Real Time Network Topology

View shows devices (large circles), interfaces (small colored circles), interconnections, flows, interface bandwidth, congestion, and more. Click on a device, interface, or flow for more details. Click and drag to rearrange or resize items for even better visibility.

Flows

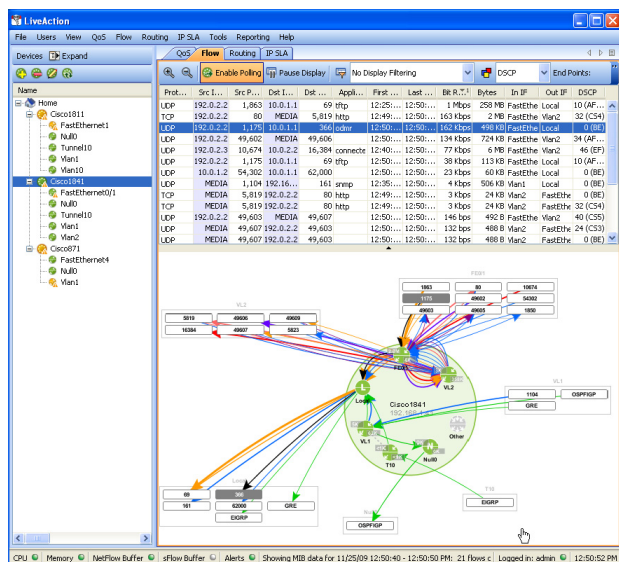
Curved lines indicate traffic flows.

Interfaces

Top half indicates input. Lower half indicates output. Numbers indicate bandwidth. Green=active Amber=congested Gray=inactive

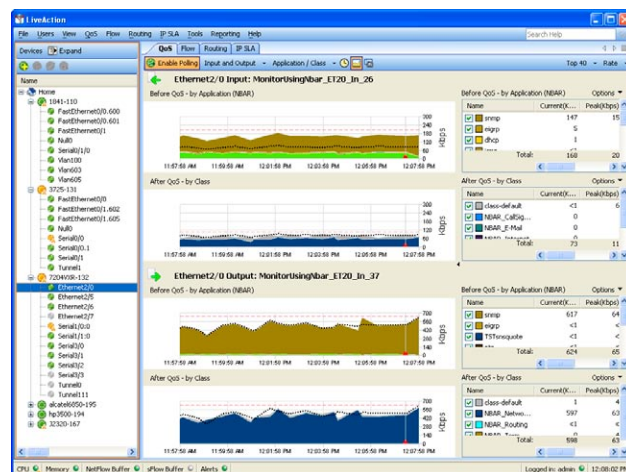
Device Level

Dive deep into the setup and activity within your switch or router. See routes and routing tables as well as flows entering, traversing, and exiting the device. View the whole picture or use filters to display specific items. LiveAction continuously captures and stores historical flow data at the full polling rate for playback of the exact device conditions during that period.



Interface Level

Need even more detail? Click down to the interface view and observe actual traffic performance in real time. View pre- and post-QoS activity and see the effects of your device configuration changes in seconds. LiveAction also records QoS historical data at the interface level for spotting specific events and trends.



LiveAction™

Devices Supported

- Cisco Series Routers*—800, 1700, 1800, 2600, 2600XM, 2800, 3600, 3700, 3800, 7200, 7600
- Cisco Series Switches*—Catalyst 6500, 4500, and 3000 series switches.
- Flow only—J-Flow and sFlow devices

*IOS 12.3, 12.4; IOS 12.2 for 7600 and Cat 6500 series

Ordering Options

LiveAction software is available in four packages with configurations for 5, 10, 25, 50, or 100 devices**

- **LiveAction Flow—LC1-0100-n****
(NetFlow, sFlow, J-Flow)
For Traffic monitoring, analysis and reporting
- **LiveAction QoS—LC1-3000-n****
LiveAction QoS (QoS monitor and configuration)
For Cisco QoS monitoring, reporting, and configuration
- **LiveAction Monitor Suite—LC1-1110-n****
(QoS monitor only, NetFlow, sFlow, J-Flow, routing)
For comprehensive monitoring, analysis and reporting using NetFlow/sFlow/J-Flow, routing and Cisco QoS MIBs
- **LiveAction Master Suite—LC1-3111-n****
(Monitor Suite plus IP SLA and Cisco QoS configuration)
For complete monitoring, analysis, reporting, and Cisco QoS configuration

**n = number of devices (005, 010, 025, 050, 100).
5 device configuration is available with Master Suite only.
Please call for configurations over 100 devices.

System Requirements

- Windows-based PC with network connection
(visit our web site for current system requirements)

Warranty and Support

- 90 day warranty and support including free upgrades
- Online technical support
- Annual software maintenance plans available

System Features

- Auto-device discovery and mapping to interactive topology-based view for all modules
- Automated and on-demand reports and charts in HTML, csv, text, JPEG, and PNG formats
- ACL editor and statistics
- GUI-based Ping, Traceroute, MTU Test setup/reporting
- RFC 1213 MIB polling and reporting
- Open command line interface direct to device
- Role-based user access
- Configurable alerts with visual, audible, email warnings

Flow

- Topology-based end-to-end NetFlow/sFlow/J-Flow view
- NetFlow v9 and Flexible NetFlow support, including IPv6 source, destination, and next hop addresses, and

flow label; ASN source and destination; MAC source and destination addresses and VLANs; TCP flags; and NBAR application

- Display end points as host IP address, host name, application port name or number
- Historical views, reporting, and playback to 10s intervals
- Hierarchical views at system, device and interface levels
- Sophisticated filtering for matching combinations of protocol type, IP addresses, DSCP values, and more
- More than 25 web-based graphical reports
- Alert on blacklisted IP address

Routing

- System level topology view of active routes
- Device route table views in graphical and tabular form
- Route display filtering by protocol and destination
- Troubleshooting—Routing loops and asymmetric routes, routing instabilities, black holes, error summarization
- Policy-based routing (PBR)—Configuration/editing of PBR and Set statements, edit existing route map configurations, check for compliance with PBR rules, displays PBR usage, displays static routes and PBR issues, exports route map statistics

QoS Monitoring and Troubleshooting

- Rate-based NBAR graphs
- Pre- and post-QoS graphs with Class and interface drops
- Detailed hardware QoS monitoring
- Congestion indicators
- Built in CBQoS MIB viewer
- Historical views and reporting
- Alert on CPU and memory utilization exception, interface packet drop or class drop thresholds

QoS Configuration

- Full MQC QoS configuration support including WRED, CBQoS, LFI, Priority Queuing
- Graphical configuration tool follows Cisco best practices with hundreds of device specific rules and guidelines
- Ability to read existing QoS policies on the router and highlight invalid settings
- Built-in policy wizard with dozens of templates based on Cisco 3-, 4-, 5-, 8-, 11-class, and Medianet models
- Intelligent configuration that is correlated with existing router settings
- Take snapshots of current configuration with rollback to previous policies
- Ability to push policies to multiple devices
- Hierarchical policy creation for advanced configurations
- Built in ACL editor

IP SLA

- Measurements: Latency, loss, jitter, MOS performance
- Tests: DHCP, DNS, ICMP Echo, FTP, HTTP, Jitter, UDP Echo
- IP SLA topology view (real-time)
- Quick and full test setup options
- Set up responder at destination
- Historical reporting (live update plotted over timeline)
- Alert on MOS or latency threshold exception, jitter test packet loss and test error

Contact ActionPacked! Networks

- Phone and eFAX: +1 888-881-1116
- info@actionpacked.com / www.actionpacked.com

© 2010 ActionPacked! Networks. All rights reserved. ActionPacked!, the ActionPacked! logo, and LiveAction are trademarks of ActionPacked! Networks. Cisco is a registered trademark of Cisco Systems, Inc. sFlow is a registered trademark of InMon Corp. Information subject to change without notice.



ActionPacked! Networks
550 Paiea Street, Suite 222, Honolulu, HI 96819

B0002-003B-0710