



2012 PRICE BOOK

amerec[®]
your moment



ENJOY THE AFFORDABLE, HEALTHY BENEFITS OF STEAM BATHING

- Steam is an easy and affordable addition to almost any shower.
- Steam bathing consumes very small amounts of water - less than 2 gallons during a 30 minute steam bath.
- Health benefits of steam bathing.
 - Relieves Stress
 - Relaxes Muscles
 - Soothes Aches and Pains
 - Flushes Toxins from the Body
 - Cleanses Skin
 - Induces a Deeper, More Relaxed Sleep
 - Relieves Nasal, Sinus and Chest Congestion
 - Fights Illness
 - Feels Good

Table of Contents

AT Series Generators with T100 Touch Control	3-5
AK Series Generators	6-8
K200i Wireless Freedom Control	9
AK Series Digital Controls	10-11
Optional Accessories for Residential Steam Baths	11-12
AV Series 120V Vapormist Generator	12
AI Series Commercial Boilers & Controls	13-15
Commercial Steam Doors	15
Commercial Steam Rooms	16
Sauna Rooms	17-19
Sauna Heaters & Controls	20-23
Sauna Accessories	24-25
Far-Infrared Saunas	25
Sauna Doors	26
Terms and Conditions	27

AMEREC AT SERIES STEAM BATH GENERATORS

CREATING THE ULTIMATE STEAM BATHING EXPERIENCE

Performance Features of Amerec AT Series Generators



Shown with ADT Auto Drain

"Soft Steam" element switching maintains a consistent and comfortable steam bath environment. The AT generator uses the full power of both elements to heat up the steam room to the preset temperature, then cuts power to half its elements, resulting in a more consistent flow of soft steam and more stable room temperature. Minimal temperature variation and an even flow of steam are the two most important features of a perfect steam bath.

Quality engineering and reliability. The small physical size of Amerec generators offers efficient installation. Stainless steel tank and water level probes provide years of trouble-free operation, while the included ADT automatic drain system promotes longer generator life. All Amerec generators have removable heating elements for easy and economical service.

The AT Series steam generator package includes the innovative T100 Touch control and the ADT automatic drain kit. Simply select the appropriate kW size generator for the shower space and add the ComfortFlo™ steam head(s) in the finish of your choice.

Recommended Generator Sizing Guide

- Step 1. Calculate the cubic footage of the steam room enclosure. Length x Width x Height = Cubic Feet
 (Do not deduct for benches or other intrusions as they represent surface area to heat.)
 (Maximum recommended ceiling height is 8 feet.)

$$L \text{ _____ } x W \text{ _____ } x H \text{ _____ } = \text{ _____ }$$

- Step 2. Add the following adjustments to the cubic footage calculated in step 1 to account for your specific room design features.

A. Acrylic or Cultured Marble.	Cubic Footage x 0% _____
B. Ceramic Tile.	Cubic Footage x 20% _____
C. For each glass or glass block wall, or exterior wall exposed to freezing.	Cubic Footage x 15% _____
D. Natural Stones (Marble, Granite, Travertine, Slate or Porcelain Tile).	Cubic Footage x 100% _____
	Total (1 + 2A + 2B + 2C + 2D) _____

AT TOUCH CONTROL SERIES

I-PHASE GENERATORS

AT Touch Control Series generator package features the T100 Touch control and includes the ADT auto drain kit.



T100 Touch Control Features:

- Touch screen operation for easy control of temperature and time settings.
- Large screen displays steam bath temperature and time of day.
- Displays temperature in Fahrenheit or Celsius.
- Sleep mode with integral sensor to activate screen when approached.
- Delayed start feature to pre-heat steam room at selected time.
- Multiple language settings including English and Spanish.
- Remote-mounted sensor allows control to be located inside or outside room.
- Flush-mount, low-profile installation.
- Installed dimensions 6 3/8" H x 4" W.

Required ComfortFlo™ steam head to be ordered separately. Please specify finish.



ComfortFlo™ Steam Head w/ Insulator

Model	Finish	Item No.	List Price
CFSH-CP	Polished Chrome	8812-31	\$ 130
CFSH-PB	Polished Brass	8812-32	\$ 150
CFSH-PN	Polished Nickel	8812-35	\$ 150
CFSH-BN	Brushed Nickel	8812-36	\$ 150
CFSH-ORB	Oil Rubbed Bronze	8812-37	\$ 170

Single Unit 240/208V 1 Phase Generator, Control & Drain Package



Model	Max Cubic			Electrical Specifications			Generator Package	
	kW	Footage	Volts	Phase	Amps	Breaker	Item No.	List Price
AT5	5.0	100	240	1	20.8	30	9015-2001	\$ 2,610
	3.7	60	208	1	18.1	25		
AT7	7.0	220	240	1	29.2	40	9015-4001	\$ 2,790
	5.2	110	208	1	25.3	35		
AT10	10.0	400	240	1	41.7	60	9015-6001	\$ 3,010
	7.5	250	208	1	36.1	50		
AT12	12.0	500	240	1*	16.7/33.3	25/50	9015-7001	\$ 3,320
	9.0	350	208	1*	14.4/28.9	20/40		
AT14	14.0	600	240	1*	20.8/37.5	30/50	9015-8001	\$ 3,750
	10.5	450	208	1*	18.1/39.9	25/50		

* Single phase AT12 & AT14 generators require two (2) separate line circuits and two (2) steam heads for each generator. Shipping dimensions for AT generator boxes are 23" L x 20.5" W x 7.5" L. Actual generator dimensions vary by kW size. Refer to rough-in sheet for actual dimensions. Estimated shipping weight for all AT single generators is 30 lbs. or 14 kgs.

Multiple Unit 240V 1 Phase Generator, Control & Drain Package for Large Steam Rooms



Model	Max. Cubic		Electrical Specifications	Generator Package	
	kW	Footage		Item No.	List Price
AT17	17	725	Please call for electrical specifications 1-800-331-0349	9025-1001	\$ 4,250
AT20	20	900		9025-2001	\$ 4,620
AT30	30	1,350		9025-5001	\$ 5,990

AT17 and AT20 include two (2) generators connected to function as one system with one (1) control. AT30 includes three (3) generators connected to function as one system with one (1) control. Multiple unit ganged systems require one (1) steam head for each generator. Steam heads must be ordered separately. Multiple unit ganged systems require one (1) ADT drain valve for each generator. Drain valves are included with the package.

AT TOUCH CONTROL SERIES

3-PHASE GENERATORS

Single Unit 208V 3 Phase Generator, Control & Drain Package



Model	kW	Max Cubic Footage	Electrical Specifications				Standard Generator	
			Volts	Phase	Amps	Breaker	Item No.	List Price
3T8	8	280	208	3	21.9	30	9015-5201	\$ 3,220
3T10	10	400	208	3	28.1	40	9015-6201	\$ 3,360
* 3T12	12	500	208	3	31.3	40	9015-7201	\$ 3,700
* 3T14	14	600	208	3	38.7	50	9015-8201	\$ 4,070

* Two (2) steam heads are recommended for 3T12 and 3T14 generators.

Shipping dimensions for AT generator boxes are 23"L x 20.5" W x 7.5" H. Refer to rough-in sheet for actual dimensions.

Estimated shipping weight for all AT single unit generators is 30 lbs. or 14 kgs.

Multiple Unit 208V 3 Phase Generator, Control & Drain Package for Large Steam Rooms



Model	kW	Max. Cubic Footage	Electrical Specifications				Standard Generator	
			Volts	Phase	Amps	Breaker	Item No.	List Price
3T20	20	800	Please call for electrical specifications.				9025-2201	\$ 5,540
3T24	24	1,000					9025-3201	\$ 5,710
3T28	28	1,200					9025-4201	\$ 5,850
3T36	36	1,500	1-800-331-0349				9025-6201	\$ 8,100

3T20, 3T24 and 3T28 include two (2) generators connected to function as one system with one (1) control.

3T36 includes three (3) generators connected to function as one system with one (1) control.

Multiple unit ganged systems require one (1) steam head for each generator. Steam heads must be ordered separately.

Multiple unit ganged systems require one (1) drain valve kit for each generator. Drain valve kits are included with the package.

Optional Accessories for AT & 3T Generator Packages



Fragrance Injector Pump Kit

Delivers essence oils directly into the steam line.

Pump kit includes on/off control, one (1) 16 oz. bottle of Eucalyptus oil and wall-mounted caddy.

Model	Item No.	List Price
A220FP	9223-227	\$ 760



Chromotherapy Light Kit

Kit includes one lamp, housing, transformer and color selection control.

Additional lamp kits ordered separately. Maximum of seven (7) lamps per installation.

On / Off switch supplied by others. Not for use as a primary light source.

Model	Item No.	List Price
A210LK	9223-212	\$ 610
FC210L-L1	9223-110	\$ 190



Stainless Steel Generator Drip Pan

Order one per generator.

Dimensions: 26" x 8" x 2"

Model	Item No.	List Price
ADP	9210-110	\$ 115



Steam Shower Sound System

The Steam Shower Sound System offers superior sound quality for your personal steam shower.

Waterproof FM radio with iPod interface, pre-amp outlet and RF 2-way remote control.

Waterproof flush-mount, 2-way speakers with powder coated stainless steel grilles.

- Peak Power: 140 watts per pair.
- Easy mounting system and grilles cover mounting screws for a clean appearance.
- Dock Dimension: 8 11/16" x 8 11/16" x 2 15/16". Cutout Dimension: 7 3/8" x 7 3/8".



Model	Item No.	List Price
SOUND SYSTEM	9252-064	\$ 1,150
SPEAKERS	9252-030	\$ 450

AK/3K SERIES STEAM BATH GENERATORS

CREATING THE ULTIMATE STEAM BATHING EXPERIENCE

Performance Features of Amerec AK Series Generators



Shown with optional ADK Auto Drain and ADP Drip Pan

"Soft Steam" element switching maintains a consistent and comfortable steam bath environment. The AK generator uses the full power of both elements to heat up the steam room to the preset temperature, then cuts power to half its elements, resulting in a more consistent flow of soft steam and more stable room temperature. Minimal temperature variation and an even flow of steam are the two most important features of a perfect steam bath.

Quality engineering and reliability. The small physical size of Amerec generators offers efficient installation. Stainless steel tank and water level probes provide years of trouble-free operation, while standard manual drains or optional ADK automatic drain systems promote longer generator life. All Amerec generators have removable heating elements for easy and economical service.

"Warm Start" instant steam option is a unique feature that keeps water in the generator tank pre-heated so steam output begins in less than 60 seconds after the main control is turned on. The "Warm Start" feature can be turned on and off to conserve electricity usage whenever the steam bath won't be used for extended periods of time.

Recommended Generator Sizing Guide

Step 1. Calculate the cubic footage of the steam room enclosure. Length x Width x Height = Cubic Feet
(Do not deduct for benches or other intrusions as they represent surface area to heat.)
(Maximum recommended ceiling height is 8 feet.)

$$L \text{ _____ } x W \text{ _____ } x H \text{ _____ } = \text{ _____ }$$

Step 2. Add the following adjustments to the cubic footage calculated in step 1 to account for your specific room design features.

- | | |
|---|-------------------------------------|
| A. Acrylic or Cultured Marble. | Cubic Footage x 0% _____ |
| B. Ceramic Tile. | Cubic Footage x 20% _____ |
| C. For each glass or glass block wall or exterior wall exposed to freezing. | Cubic Footage x 15% _____ |
| D. Natural Stones (Marble, Granite, Travertine, Slate or Porcelain Tile). | Cubic Footage x 100% _____ |
| | Total (1 + 2A + 2B + 2C + 2D) _____ |

AK SERIES

I-PHASE GENERATORS

Single Unit 240/208V 1 Phase Generators

Model	kW	Max Cubic		Electrical Specifications			Standard Generator		Warm Start Generator	
		Footage	Volts	Phase	Amps	Breaker	Item No.	List Price	Item No.	List Price
AK4	4.0	75	240	1	16.7	25	9011-100	\$ 1,280	9011-104	\$ 1,500
	3.0	50	208	1	14.4	20				
AK5	5.0	100	240	1	20.8	30	9011-200	\$ 1,350	9011-204	\$ 1,570
	3.7	60	208	1	18.1	25				
AK6	6.0	160	240	1	25.0	35	9011-300	\$ 1,470	9011-304	\$ 1,690
	4.5	85	208	1	21.7	30				
AK7	7.0	220	240	1	29.2	40	9011-400	\$ 1,530	9011-404	\$ 1,750
	5.2	110	208	1	25.3	35				
AK8.5	8.5	300	240	1	35.4	50	9011-500	\$ 1,670	9011-504	\$ 1,890
	6.4	190	208	1	30.7	40				
AK10	10.0	400	240	1	41.7	60	9011-600	\$ 1,740	9011-604	\$ 1,960
	7.5	250	208	1	36.1	50				
AK12*	12.0	500	240	1*	16.7/33.3	25/50	9011-700	\$ 2,060	9011-704	\$ 2,280
	9.0	350	208	1*	14.4/28.9	20/40				
AK14*	14.0	600	240	1*	20.8/37.5	30/50	9011-800	\$ 2,490	9011-804	\$ 2,710
	10.5	450	208	1*	18.1/39.9	25/50				

* Single phase AK12 & AK14 generators require two (2) separate line circuits and two (2) steam heads for each generator.

Shipping dimensions for AK generator boxes are 23" L x 20.5" W x 7.5" H.

Actual generator dimensions vary by kW size. Refer to rough-in sheet for actual dimensions.

Estimated shipping weight for all AK4 through AK14 generators is 30 lbs. or 14 kgs.

A separate Warm Start Control must be ordered for use with Warm Start generators. See below.

Multiple Unit 240V 1 Phase Generators for Large Steam Rooms

Model	kW	Max. Cubic		Electrical Specifications	Standard Generator		Warm Start Generator	
		Footage			Item No.	List Price	Item No.	List Price
AK17	17	725		Please call for electrical specifications 1-800-331-0349	9005-370	\$ 2,640	9005-374	\$ 2,860
AK20	20	900			9005-380	\$ 3,010	9005-384	\$ 3,230
AK30	30	1,350			9005-390	\$ 4,020	9005-394	\$ 4,240

AK17 & AK20 include two (2) generators connected to function as one system with one (1) control.

AK30 includes three (3) generators connected to function as one system with one (1) control.

Multiple unit ganged systems require one (1) steam head for each generator. Steam heads must be ordered separately.

Multiple unit ganged systems require one (1) drain valve kit for each generator. Drain valve kits ordered separately.

A separate Warm Start Control must be ordered for use with Warm Start generators.

- Warm Start control switch is required to activate the optional Warm Start feature available on AK and 3K series generators. It is not required when the K200i Freedom Control is used.
- Warm Start control switch can be mounted inside the steam room or near the steam generator.



Model	Finish	Item No.	List Price
WS-CP	Polished Chrome	9208-41	\$ 100
WS-PB	Polished Brass	9208-42	\$ 100
WS-BN	Brushed Nickel	9208-451	\$ 100
WS=ORB	Oil Rubbed Bronze	9208-47	\$ 100

3K SERIES

3-PHASE GENERATORS

Single Unit 208V / 3 Phase Generators

Model	kW	Max Cubic Footage	Volts	Electrical Specifications			Standard Generator		Warm Start Generator	
				Phase	Amps	Breaker	Item No.	List Price	Item No.	List Price
3K8	8	300	208	3	21.9	30.0	9011-520	\$ 1,960	9011-524	\$ 2,180
3K10	10	400	208	3	28.1	40.0	9011-620	\$ 2,090	9011-624	\$ 2,310
* 3K12	12	500	208	3	31.3	40.0	9011-720	\$ 2,440	9011-724	\$ 2,660
* 3K14	14	600	208	3	40.2	50.0	9011-820	\$ 2,800	9011-824	\$ 3,020

* Two (2) steam heads are recommended for 3K12 and 3K14 generators.

Shipping dimensions for all 3K8 through 3K14 generators is 23"L x 20.5" W x 7.5" H. Refer to rough-in sheet for actual dimensions.

Estimated shipping weight for all 3K8 through 3K14 generators is 30 lbs. or 14 kgs.

A separate Warm Start Control must be ordered for use with Warm Start generators.

Multiple Unit 208V 3 Phase Generators for Large Steam Rooms

Model	kW	Max. Cubic Footage	Electrical Specifications	Standard Generator		Warm Start Generator	
				Item No.	List Price	Item No.	List Price
3K20	20	800	Please call for electrical specifications 1-800-331-0349	9005-540	\$ 3,930	9005-541	\$ 4,150
3K24	24	1,000		9005-542	\$ 4,100	9005-543	\$ 4,320
3K28	28	1,200		9005-544	\$ 4,240	9005-545	\$ 4,460
3K36	36	1,500		9005-548	\$ 6,150	9005-549	\$ 6,370

3K20, 3K24 & 3K28 include two (2) generators connected to function as one (1) system with one (1) control.

3K36 includes three (3) generators connected to function as one (1) system with one (1) control.

Multiple unit ganged systems require one (1) steam head for each generator. Steam heads must be ordered separately.

Multiple unit ganged systems require one (1) drain valve kit for each generator. Drain valve kits ordered separately.

A separate Warm Start Control must be ordered for use with Warm Start generators.

- Warm Start control switch is required to activate the optional Warm Start feature available on AK and 3K series generators. It is not required when the K200i Freedom Control is used.
- Warm Start control switch can be mounted inside the steam room or near the steam generator.



Model	Finish	Item No.	List Price
WS-CP	Polished Chrome	9208-41	\$ 100
WS-PB	Polished Brass	9208-42	\$ 100
WS-BN	Brushed Nickel	9208-451	\$ 100
WS=ORB	Oil Rubbed Bronze	9208-47	\$ 100

Steam Generator Accessories



Model	Description	Item No.	List Price
ADK	Automatic Drain Valve Kit for AK & 3K Series generators. Automatically drains and flushes tank after each steam bath. Order one (1) ADK drain for each generator when ordering ganged systems.	9210-100	\$ 345



Model	Description	Item No.	List Price
ADP	Stainless Steel generator drip pan with threaded fitting. Order one per generator.	9210-110	\$ 115

STEAM BATH CONTROLS

FOR AK AND 3K SERIES GENERATORS

K200i Freedom Control



- RF Wireless control provides user convenience up to 50' from generator location.
- Eliminates need to bury control cables inside walls or drill holes in wall surfaces.
- Large color display offers quick and easy adjustment of steam bath settings.
- Freedom Control can be used to activate Warm Start feature.
- Control kit includes wall mounted dock with integral temperature sensor and on/off button, RF communication hub and separate 120V charger base.

Steam head(s) must be ordered separately.

<i>Model</i>	<i>Color</i>	<i>Item No.</i>	<i>List Price</i>
K200i Freedom Control Kit	White	9221-018	\$ 1,320
K200i Freedom Control Kit	Biscuit	9221-010	\$ 1,320

ComfortFlo™ Steam Head (Must be ordered separately with K200i Freedom Control)



<i>Model</i>	<i>Finish</i>	<i>Item No.</i>	<i>List Price</i>
CFSH-CP	Polished Chrome	8812-31	\$ 130
CFSH-PB	Polished Brass	8812-32	\$ 150
CFSH-PN	Polished Nickel	8812-35	\$ 150
CFSH-BN	Brushed Nickel	8812-36	\$ 150
CFSH-ORB	Oil Rubbed Bronze	8812-37	\$ 170

K200i Freedom Control Options (Select one, two or all three options.)



Power Control Unit required when one or more options ordered.

<i>Model</i>	<i>Item No.</i>	<i>List Price</i>
FC200PCU Power Control Unit	9223-200	\$ 270



- Colored Lighting for installation in the steam room ceiling.
- Includes one lamp, housing and transformer.
- Available only for use with K200i Freedom Control and requires FC200PCU.
- Not for use as a primary light source.

<i>Model</i>	<i>Item No.</i>	<i>List Price</i>
FC210L Chromotherapy Light Kit for K200i Freedom Control	9223-210	\$ 440
FC210L-L1 Single Lamp Kit to add additional ceiling lights.	9223-110	\$ 190

Maximum of seven (7) lamps per installation.



- Fragrance Injector Pump kit delivers essence oils directly into copper steam line.
- Pump kit includes one (1) 16 oz. bottle of 100% pure Eucalyptus oil.
- Available only for use with K200i Freedom Control and requires FC200PCU.

<i>Model</i>	<i>Item No.</i>	<i>List Price</i>
FC220P Fragrance Injector Pump for K200i Freedom Control	9223-220	\$ 500



- EvenSteam™ Air Circulation Fan kit circulates air in steam rooms with ceiling heights greater than 8' to reduce temperature variations from ceiling to floor.
- Available only for use with K200i Freedom Control and requires FC200PCU.

<i>Model</i>	<i>Item No.</i>	<i>List Price</i>
FC230F EvenSteam™ Air Circulation Fan Kit (Vent grilles and ducting not included.)	9223-230	\$ 535

STEAM BATH CONTROLS

FOR AK AND 3K SERIES GENERATORS

KT60 Digital Control with Built-In Temperature Sensor



- KT60 3-button digital control with on/off, temperature and time duration setting.
- Display alternates between ambient room temperature and time remaining.
- Features integral temperature sensor and must be mounted inside steam room.
- Control kit includes KT60 control, cable and ComfortFlo steam head.

<i>Model</i>	<i>Finish</i>	<i>Item No.</i>	<i>List Price</i>
KT60-CP	Polished Chrome	9111-101	\$ 630
KT60-PB	Polished Brass	9111-102	\$ 690
KT60-PN	Polished Nickel	9111-105	\$ 690
KT60-BN	Brushed Nickel	9111-106	\$ 690
KT60-ORB	Oil Rubbed Bronze	9111-107	\$ 720

K60 Digital Control with Remote-Mounted Temperature Sensor



- K60 3-button digital control with on/off, temperature and time duration setting.
- Display alternates between ambient room temperature and time remaining.
- Features remote sensor and can be mounted inside or outside steam room.
- Control kit includes K60 control, sensor, cables and ComfortFlo steam head.

<i>Model</i>	<i>Finish</i>	<i>Item No.</i>	<i>List Price</i>
K60-CP	Polished Chrome	9101-101	\$ 660
K60-PB	Polished Brass	9101-102	\$ 720
K60-PN	Polished Nickel	9101-105	\$ 720
K60-BN	Brushed Nickel	9101-106	\$ 720
K60-ORB	Oil Rubbed Bronze	9101-107	\$ 750

K30 On/Off Control with Remote-Mounted Temperature Sensor



- K30 1-button digital control with on/off and temperature adjustment.
- Built-in 30 minute timer .
- Features remote sensor and can be mounted inside or outside steam room.
- Control kit includes K30 control, sensor, cables and ComfortFlo steam head.

<i>Model</i>	<i>Finish</i>	<i>Item No.</i>	<i>List Price</i>
K30-CP	Polished Chrome	9207-11	\$ 400
K30-PB	Polished Brass	9207-12	\$ 460
K30-PN	Polished Nickel	9207-15	\$ 460
K30-BN	Brushed Nickel	9207-151	\$ 460
K30-ORB	Oil Rubbed Bronze	9207-157	\$ 490

R30K On/Off Non-Thermostatic Control



- R30K basic on/off control.
- Green indicator light illuminates during generator operation.
- Control can be mounted inside or outside steam room.
- Control kit includes R30K control, cable and ComfortFlo steam head.

<i>Model</i>	<i>Finish</i>	<i>Item No.</i>	<i>List Price</i>
R30K-CP	Polished Chrome	9141-101	\$ 170
R30K-PB	Polished Brass	9141-102	\$ 230
R30K-BN	Brushed Nickel	9141-106	\$ 230
R30K-ORB	Oil Rubbed Bronze	9141-107	\$ 260

STEAM BATH CONTROLS

FOR AK AND 3K SERIES GENERATORS

DKT60/K60 Dual Digital Control with Built-In Temperature Sensor



- DKT60/K60 dual 3-button digital controls display temperature and time.
- Adjustable time duration up to 60 minutes and temperature up to 125 °F.
- Both controls alternately display room temperature and time remaining.
- KT60 features integral temperature sensor and mounts inside room.
- K60 control mounts outside room.
- Dual control kit includes two controls, cables and ComfortFlo steam head.

<i>Model</i>	<i>Finish</i>	<i>Item No.</i>	<i>List Price</i>
DKT60/K60-CP	Polished Chrome	9113-101	\$ 1,160
DKT60/K60-PB	Polished Brass	9113-102	\$ 1,260
DKT60/K60-PN	Polished Nickel	9113-105	\$ 1,260
DKT60/K60-BN	Brushed Nickel	9113-106	\$ 1,260
DKT60/K60-ORB	Oil Rubbed Bronze	9113-107	\$ 1,290

DK60/K30 Dual Digital & On/Off Control with Remote Mounted Temperature Sensor



- DK60/K30 dual 3-button control displays temperature and time.
- Adjustable time duration up to 60 minutes and temperature up to 125 °F.
- K60 control alternately displays room temperature and time remaining.
- K30 on/off control display illuminates during operation.
- Features remote sensor that mounts inside steam room
- Dual control kit includes two controls, sensor, cables and ComfortFlo steam head.

<i>Model</i>	<i>Finish</i>	<i>Item No.</i>	<i>List Price</i>
DK60/K30-CP	Polished Chrome	9104-101	\$ 920
DK60/K30-PB	Polished Brass	9104-102	\$ 1,020
DK60/K30-PN	Polished Nickel	9104-105	\$ 1,020
DK60/K30-BN	Brushed Nickel	9104-106	\$ 1,020
DK60/K30-ORB	Oil Rubbed Bronze	9104-107	\$ 1,050

Steam Bath Accessories



Chromatherapy Light Kit

Kit includes one lamp, housing, transformer and color selection control. Additional lamp kits ordered separately. Maximum of seven (7) lamps per installation. On / Off switch supplied by others. Not for use as a primary light source.

<i>Model</i>		<i>Item No.</i>	<i>List Price</i>
A210LK	Light Kit	9223-212	\$ 610
FC210L-L1	Single Lamp Kit	9223-110	\$ 190



Fragrance Injector Pump Kit

Delivers essence oils directly into the copper steam line. Pump kit includes one/off control, one (1) 16 oz bottle of Eucalyptus oil and wall-mounted caddy.

<i>Model</i>		<i>Item No.</i>	<i>List Price</i>
A220FP		9223-227	\$ 760



Fragrance, Eucalyptus, Supreme Grade, 100% Pure

<i>Model</i>		<i>Item No.</i>	<i>List Price</i>
Eucalyptus-2	2 oz. bottle	9253-171	\$ 13
Eucalyptus-8	8 oz. bottle	9253-172	\$ 21
Eucalyptus-16	16 oz. bottle	9253-173	\$ 36
Eucalyptus-64	1-gallon jug	9253-175	\$ 180

STEAM BATH ACCESSORIES



Steam Shower Sound System

The Steam Shower Sound System offers superior sound quality for your personal steam shower. Waterproof FM radio with iPod interface, pre-amp outlet and RF 2-way remote control. Waterproof flush-mount, 2-way speakers with powder coated stainless steel grilles.

- Peak Power: 140 watts per pair.
- Easy mounting system and grilles cover mounting screws for a clean appearance.
- Dock Dimension: 8 11/16" x 8 11/16" x 2 15/16". Cutout Dimension: 7 3/8" x 7 3/8".

<i>Model</i>		<i>Item No.</i>	<i>List Price</i>
SOUND SYSTEM	Sound System with speakers.	8252-064	\$ 1,150
SPEAKERS	Waterproof Speakers, 1 Pair	9252-030	\$ 450



Automatic Drain Valve for AK & 3K Series Generators

Order one per generator.

<i>Model</i>		<i>Item No.</i>	<i>List Price</i>
ADK	Automatic Drain Valve Kit	9210-100	\$ 345



Stainless Steel Generator Drip Pan

Order one per generator.
Dimensions: 26" x 8" x 2"

<i>Model</i>		<i>Item No.</i>	<i>List Price</i>
ADP	Steam Generator Drip Pan	9210-110	\$ 115



ComfortFlo™ Steam Head w/ Insulator

<i>Model</i>		<i>Item No.</i>	<i>List Price</i>
CFSH-CP	Polished Chrome	8812-31	\$ 130
CFSH-PB	Polished Brass	8812-32	\$ 150
CFSH-PN	Polished Nickel	8812-35	\$ 150
CFSH-BN	Brushed Nickel	8812-36	\$ 150
CFSH-ORB	Oil Rubbed Bronze	8812-37	\$ 170



Wall Mount, Fold Down Teak Shower Seat

<i>Model</i>		<i>Item No.</i>	<i>List Price</i>
TEAK SEAT	20" x 13" Teak Seat	9270-029	\$ 290



Wall Mount, Fold Down White Shower Seat

<i>Model</i>		<i>Item No.</i>	<i>List Price</i>
RELAX	13 1/2" x 9 1/4" White Seat	9270-02	\$ 110

AV Series 120V Vapormist Generators (Includes Control & Trim Kit)



- AV2 Vapormist generators provide soft, gentle steam at lower temperatures than 240V generators.
- Compact 120V plug-in unit is ideal for small acrylic shower enclosures.
- Integral cord and plug for a 20 amp, 120v household circuit, steam head and on/off button included.
- Features a built-in 60 minute timer.

<i>Model</i>	<i>kW</i>	<i>Max. Cubic Footage</i>	<i>Description</i>	<i>Item No.</i>	<i>List Price</i>
AV2-WH	2	*80	120V, 1 Phase Generator, White Trim	9005-010	\$ 1,000
AV2-CP	2	*80	120V, 1 Phase Generator, Chrome Trim	9005-011	\$ 1,060

* Rated on Vapor, not Temperature.

AI SERIES COMMERCIAL STEAM BOILERS

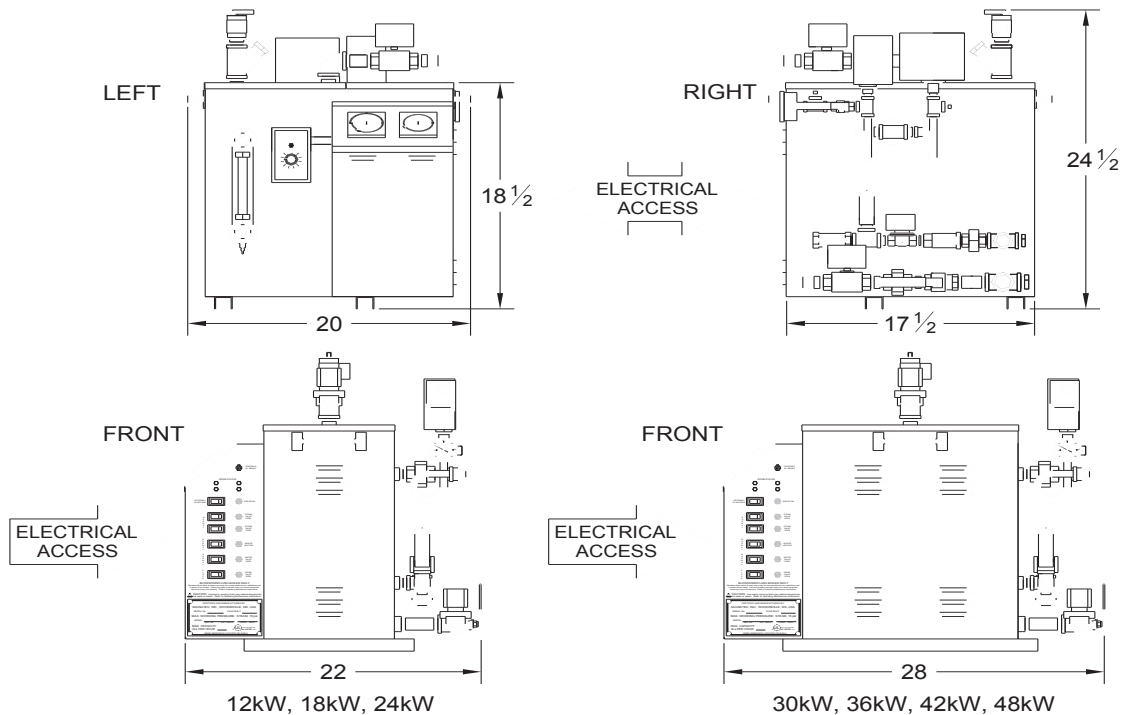


Ideal for large steam rooms, the Amerrec AI Series is designed for user enjoyment, ease of operation and long life. The AI boilers are engineered for easy on-site maintenance and hands-off, automated operation. Amerrec engineering and technology incorporates several unique features, making the AI Series the ideal choice for large commercial steam rooms.

AI Series Boiler Features

- ASME H-Stamped Low-Pressure Vessel, National Board registered.
- UL Listed
- All steel construction with powder coat finish and stainless steel feet to prevent corrosion.
- Multiple safety features, including:
 - Sight Glass
 - Three-level water sensing system with low water cutoff
 - Control system per CSD-1.
- Room "over-temperature shut down" turns boiler elements off and blinks indicators to show alarm.
- Designed for easy serviceability.
 - Simple service access and control
 - Indicator lights with integral diagnostics
- One or two-room operation with each room controlled individually. Requires 2-room thermostatic control kit.
- CoolFlush™ Auto Drain Option performs recommended daily draining and flushing to reduce sludge and scale build up.
 - Anti-vacuum drain system reduces gurgling noises and slow draining.
 - Cools water in tank to 140° or less to prevent damage to plumbing drain system.
 - Drain clock allows system to start at desired time of day, whether the generator is on or off.
- Optional Low Water Cut-Off (LWCO) with manual reset prevents heating should the water level drop below safe levels.
- Optional 24-hour and 24-hour / 7-day integral run and drain clocks.
- Optional "Refresh" control provides short bursts of steam on demand with a simple push button inside the steam room.
 - Provides a 15 to 20 second burst of steam even if the room is at set temperature and not calling for steam.

AI Series Commercial Steam Boiler Dimensions



AI SERIES COMMERCIAL STEAM BOILERS

AI Series Commercial Steam Boilers



Model	kW	Max Cubic	Steam Lbs.	Electrical Specifications			Item No.	List Price
		Footage	Per Hour	Volts	Phase	Amps		
AI-12	12	550	36	208	1	59	9006-120	\$ 5,300
AI-12	12	550	36	240	1	51	9006-121	\$ 5,300
AI-12	12	550	36	208	3	34	9006-123	\$ 5,300
AI-12	12	550	36	240	3	30	9006-124	\$ 5,300
AI-12	12	550	36	415	3	18	9006-125	\$ 5,300
AI-12	12	550	36	480	3	15	9006-126	\$ 5,300
AI-18	18	900	54	208	1	88	9006-180	\$ 5,800
AI-18	18	900	54	240	1	76	9006-181	\$ 5,800
AI-18	18	900	54	208	3	51	9006-183	\$ 5,800
AI-18	18	900	54	240	3	44	9006-184	\$ 5,800
AI-18	18	900	54	415	3	27	9006-185	\$ 5,800
AI-18	18	900	54	480	3	22	9006-186	\$ 5,800
AI-24	24	1200	73	208	1	116	9006-240	\$ 6,500
AI-24	24	1200	73	240	1	101	9006-241	\$ 6,500
AI-24	24	1200	73	208	3	68	9006-243	\$ 6,500
AI-24	24	1200	73	240	3	59	9006-244	\$ 6,500
AI-24	24	1200	73	415	3	36	9006-245	\$ 6,500
AI-24	24	1200	73	480	3	29	9006-246	\$ 6,500
AI-30	30	1500	91	208	3	85	9006-303	\$ 7,400
AI-30	30	1500	91	240	3	73	9006-304	\$ 7,400
AI-30	30	1500	91	415	3	44	9006-305	\$ 7,400
AI-30	30	1500	91	480	3	36	9006-306	\$ 7,400
AI-36	36	1800	109	208	3	101	9006-363	\$ 7,800
AI-36	36	1800	109	240	3	88	9006-364	\$ 7,800
AI-36	36	1800	109	415	3	53	9006-365	\$ 7,800
AI-36	36	1800	109	480	3	43	9006-366	\$ 7,800
AI-42	42	2100	127	208	3	118	9006-423	\$ 8,200
AI-42	42	2100	127	240	3	102	9006-424	\$ 8,200
AI-42	42	2100	127	415	3	62	9006-425	\$ 8,200
AI-42	42	2100	127	480	3	51	9006-426	\$ 8,200
AI-48	48	2400	145	240	3	117	9006-484	\$ 8,600
AI-48	48	2000	145	415	3	70	9006-485	\$ 8,600
AI-48	48	2000	145	480	3	58	9006-486	\$ 8,600

Note: It is recommended that one steam head be installed for every 12 kW. Thermostat kits required for each boiler include two (2) steam heads. Please order additional steam heads as required for 30 kW and larger AI boilers.

Please select required and optional controls for AI Series Boilers on next page.

Club 190 Steam Door Handicap accessible, ADA compliant.

A heavy glass door with sturdy aluminum frame. Excellent for high use commercial applications.



- Door opening is 36" x 84"; frame size is 39-1/2" x 85-3/4".
- Custom sizes available. Please call for quote.
- Vinyl sweep.
- Hydraulic closer included. Closer to be mounted on exterior side of door.
- Push - Pull handles included.
- 31-3/8" x 70-1/8" clear 1/4" tempered glass.
- Optional 1" insulated glass provides increased thermal efficiency.

Standard 40 x 86 door with Aluminum frame	\$ 2,750
Add for Bronze frame	\$ 255
Add for 1" insulated glass	\$ 255
Custom Size Doors	Call for Quote

AI SERIES COMMERCIAL BOILER

CONTROLS AND OPTIONS

Model	Description	Item No.	List Price
One of the following thermostatic control kits is required for all AI Series boilers.			
T100B-1	T100 Touch control kit for 1 room installation. For use with all models. Includes Touch screen control, sensor, cables and 2 ea. 3/4" Chrome steam heads.	9150-103	\$ 1,150
T100B-2	T100 Touch control kit for 2 room installation. 12-24kW models.	9150-104	\$ 2,350
	T100 Touch control kit for 2 room installation. 30-48kW models Includes 2 Touch controls, 2 sensors, cables, 1 steam solenoid valve assembly and 4 ea. 3/4" Chrome steam heads.	9150-106	\$ 2,350
IT1	Thermostat for 1 room installation. For use with all models. Includes thermostat control, sensor, cables and 2 ea. 3/4" Chrome steam heads.	9226-30	\$ 290
IT1-M	Boiler mounted thermostat for 1 room installation. For use on all models. Includes thermostat control, sensor, cables and 2 ea. 3/4" Chrome steam heads.	9226-301	\$ 330
IT2	Thermostat for 2 room installation. 12-24kW 208V, 240V & 480V models.	9226-20	\$ 1,020
IT2	Thermostat for 2 room installation. 12-24kW 415V Export models.	9226-21	\$ 1,020
IT2	Thermostat for 2 room installation. 30-48kW 208V, 240V & 480V models.	9226-22	\$ 1,020
IT2	Thermostat for 2 room installation. 30-48kW 415V Export models. Includes 2 IT1 thermostat controls, 2 sensors, cables, 1 steam solenoid valve assembly and 4 ea. 3/4" Chrome steam heads.	9226-23	\$ 1,020
IT2-M	Boiler mounted thermostat for 2 room installation. 12-24kW 208V, 240V & 480V.	9226-201	\$ 1,090
IT2-M	Boiler mounted thermostat for 2 room installation. 12-24kW 415V Export.	9226-211	\$ 1,090
IT2-M	Boiler mounted thermostat for 2 room installation. 30-48kW 208V, 240V & 480V.	9226-221	\$ 1,090
IT2-M	Boiler mounted thermostat for 2 room installation. 30-48kW 415V Export. Includes 2 IT1 thermostat controls, 2 sensors, cables, 1 steam solenoid valve assembly and 4 ea. 3/4" Chrome steam heads.	9226-231	\$ 1,090
Optional controls and accessories for AI Series boilers.			
ADI	CoolFlush™ auto drain and flush system.	9210-118	\$ 820
ADI	CoolFlush™ auto drain and flush system. 230V for Export.	9210-119	\$ 820
ADI-D	CoolFlush™ auto drain and flush system with Digital Run Clock.	9210-116	\$ 880
ADI-D	CoolFlush™ auto drain and flush system with Digital Run Clock. 230V for Export	9210-117	\$ 880
IDS	In room "Refresh" control for a quick burst of steam on demand.	9226-05	\$ 240
I60	60 minute timer to control steam flow in steam rooms with intermittent use.	9226-10	\$ 170
I24/7	7 Day Time Clock with 2 hour on/off segments. 120V.	9226-15	\$ 120
I24/1	24 Hour Time Clock with 30 minute on/off segments. 120V.	9226-16	\$ 120
I24/7	7 Day Time Clock with 2 hour on/off segments. 230V / 50Hz for Export	9226-17	\$ 120
I24/1	24 Hour Time Clock with 30 minute on/off segments. 230V / 50Hz for Export	9226-18	\$ 120
D24/7	24 Hour 7 Day Digital Time Clock with Battery Back Up. 120V	9226-19	\$ 180
D24/7	24 Hour 7 Day Digital Time Clock with Battery Back Up. 230V for Export	9226-191	\$ 180
LWCO	Low Water Cut-Off with Manual Reset (Required by code in some states.)	8814-50	\$ 760
AI-Outlet	3/4" Polished Chrome steam head for use with AI Series boilers.	8814-01	\$ 100
DIFFUSER	Acrylic Steam Diffuser - Opaque	8034-02	\$ 125
ASX100	Single Cartridge Scale-X Filter System	9209-010	\$ 325
ASX100-RFK	ASX100 Filter Replacement Kit	9209-041	\$ 140
ASX200	Dual Cartridge Scale-X Filter System	9209-020	\$ 715
ASX200-RFK	ASX200 Filter Replacement Kit	9209-051	\$ 245

COMMERICAL STEAM ROOMS

Elysee and Excellent modular acrylic steam rooms are made of high-tech, vacuum-formed special grade white acrylic for a rigid, steam-tight construction. Supplied in ready-to-assemble roof and wall sections with comfortable seating. The door is made from tinted, tempered safety glass in a sturdy frame with handles of anodized aluminum. These luxurious steam rooms are a perfect complement to public bathing facilities in hotels, spas, fitness centers and gyms.

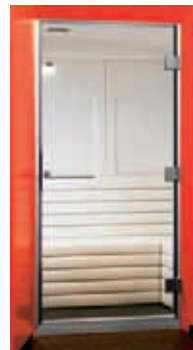


Elysee Modular Acrylic Steam Rooms

- Constructed of white, high-gloss, easy-to-clean panels that provide a bright bathing environment.
- Extra wide 35-1/2" tinted safety glass door with flat sill (no raised threshold) and anodized aluminum handles.
- Integral recessed LED light installs above each seat section to provide subdued lighting.
- Smoked, tempered safety glass front wall in a frame of anodized aluminum.
- Exterior surface and floor not provided.

<i>Model</i>	<i>Description</i>	<i>Cu Ft</i>	<i>Exterior Dimensions</i>	<i>Item No.</i>	<i>List Price</i>
EL-4F-GF	Elysee 4-Person Steam Room	220	83.5" x 52.75" x 81.5"	9710-030	\$ 8,300
EL-6F-GF	Elysee 6-Person Steam Room	320	83.5" x 76" x 81.5"	9710-040	\$ 10,800
EL-8F-GF	Elysee 8-Person Steam Room	490	83.5" x 99.25" x 81.5"	9710-050	\$ 12,800

Please select an appropriate sized AK, 3K generator or AI boiler and controls based upon Elysee room cubic footage.



Excellent Modular Acrylic Steam Rooms

- Constructed of white, high-gloss, easy-to-clean panels that provide a bright bathing environment.
- Extra wide 35-1/2" tinted safety glass door with flat sill (no raised threshold) and anodized aluminum handles.
- Wide, comfortable benches in white lacquered aluminum.
- Exterior surface and floor not provided.

<i>Model</i>	<i>Description</i>	<i>Cu Ft</i>	<i>Exterior Dimensions</i>	<i>Item No.</i>	<i>List Price</i>
EX-8FL	Excellent 8-person steam room.	320	83.5" x 76" x 81.5"	9710-010	\$ 15,000
EX-12FL	Excellent 12-person steam room.	490	83.5" x 99.25" x 81.5"	9710-020	\$ 17,500

Please select an appropriate sized AK, 3K generator or AI boiler and controls based upon Excellent room cubic footage.

SAUNA PRODUCTS

Signature Sauna Rooms

All Signature Saunas are made of clear Western Red Cedar (unless noted otherwise) and include the following: heater, control, rocks, stainless steel bucket and ladle, 5" thermometer, appropriate light, headrests (2), heater guard, backrest and duckboard for walk area. Benches are pre-assembled and door is pre-hung.

European Alder and Hemlock are optional woods unless noted as standard.

Model	Size	Heater	Benches	List Price
Cascade	72" x 84" x 84"	6 kW	2	
(Cedar/Hemlock standard)				
Package with Designer heater				\$ 13,790
Package with Digital heater and DC60 control				\$ 14,240
Package with Saunatonnttu heater				\$ 17,740



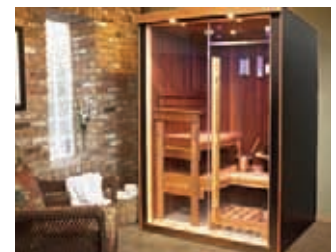
Model	Size	Heater	Benches	List Price
Alta	81 3/4" x 81 3/4" x 84"	6 kW	2	
Package with Designer heater				\$ 12,790
Package with Digital heater and DC60 control				\$ 13,240
Package with Saunatonnttu heater				\$ 16,750



Model	Size	Heater	Benches	List Price
Pacific	72" x 84" x 84"	6 kW	3	
Package with Designer heater				\$ 12,180
Package with Digital heater and DC60 control				\$ 12,630
Package with Saunatonnttu heater				\$ 16,140



Model	Size	Heater	Benches	List Price
Onyx	72" x 84" x 84"	6 kW	2	
Package with Digital heater and DC60 control				\$ 11,220
Onyx	60" x 58 3/4" x 84"	4.5kW	2	
Package with Digital heater and DC60 control				\$ 9,680



Sauna Entertainment Center	Item No.	List Price
Audio-visual system designed to perform in the high temperatures and humidity of a sauna. System includes: 15" LCD flat screen, marine grade speakers, remote control DVD player for DVD, VCD, CD, MP3, AM-FM stereo Electronic equipment is protected and mechanically vented for heat and moisture tolerance System is pre-installed and pre-wired within one wall-mounted module	8801-201	\$ 3,000



PANEL-BUILT SAUNA ROOMS

Panel-Built sauna packages are manufactured of clear Western Red Cedar and include the following: the heater noted, rocks, stainless steel bucket and ladle, wall mounted light, 5" thermometer, duckboard for walk area, headrest and backrest for each upper bench and heater guard rail. Benches are preassembled. All glass bronze tint door is standard (24" x 72" for most rooms) and pre-hung into one of the wall panels. HR or HL door swing must be specified.

Model	Size (O.D)	Cu. Ft.	kW	Pkg. w/ S-tonnttu heater	Pkg. w/ Digital control	Pkg. w/ HSC control	Pkg. w/ Built In control
PB 44	4' x 4' x 79"	80	3.0	3.0 kW Junior Heater			\$ 7,130
PB 45	4' x 5' x 7'	109	4.5	N/A	\$ 8,140	\$ 7,720	\$ 7,500
PB 46	4' x 6' x 7'	133	4.5	N/A	\$ 8,790	\$ 8,360	\$ 8,150
PB 47	4' x 7' x 7'	157	4.5	N/A	\$ 9,640	\$ 9,220	\$ 9,000
PB 48	4' x 8' x 7'	181	4.5	\$ 14,020	\$ 10,440	\$ 10,030	\$ 9,810
PB 55	5' x 5' x 7'	140	4.5	N/A	\$ 8,670	\$ 8,250	\$ 8,040
PB 55-C	5' x 5' x 7', 5 sided	125	4.5	N/A	\$ 8,490	\$ 8,060	\$ 7,830
PB 56	5' x 6' x 7'	176	4.5	\$ 12,920	\$ 9,360	\$ 8,930	\$ 8,710
PB 57	5' X 7' X 7'	208	6.0	\$ 13,850	\$ 10,350	\$ 9,920	\$ 9,690
PB 58	5' x 8' x 7'	240	6.0	\$ 14,730	\$ 11,240	\$ 10,780	\$ 10,580
PB 59	5' x 9' x 7'	272	6.0	\$ 15,420	\$ 11,910	\$ 11,460	\$ 11,250
PB 66	6' x 6' x 7'	215	6.0	\$ 13,810	\$ 10,320	\$ 9,870	\$ 9,660
PB 66-C	6' x 6' x 7', 5 sided	194	6.0	\$ 13,540	\$ 10,040	\$ 9,590	\$ 9,370
PB 6.5-C	6.5' x 6.5' x 7', 5 sided	233	6.0	\$ 14,130	\$ 10,640	\$ 10,190	\$ 9,980
PB 67	6' x 7' x 7'	254	6.0	\$ 14,530	\$ 11,020	\$ 10,580	\$ 10,350
PB 68	6' x 8' x 7'	293	8.0	\$ 15,550	\$ 12,080	\$ 11,720	\$ 12,940
PB 69	6' x 9' x 7'	331	8.0	\$ 16,210	\$ 12,740	\$ 12,380	\$ 12,180
PB 610	6' x 10' x 7'	370	8.0	\$ 16,910	\$ 13,440	\$ 13,090	\$ 12,880
PB 77	7' x 7' x 7'	300	8.0	\$ 15,190	\$ 11,720	\$ 11,360	\$ 11,160
PB 77-C	7' x 7' x 7', 5 sided	277	8.0	\$ 15,090	\$ 11,620	\$ 11,260	\$ 11,060
PB 78	7' x 8' x 7'	345	8.0	\$ 16,310	\$ 12,840	\$ 12,480	\$ 12,280
PB 88	8' x 8' x 7'	398	10.5	\$ 17,020	\$ 15,860	\$ 14,630	N/A
PB 810	8' x 10' x 7'	450	10.5	N/A	\$ 17,390	\$ 16,160	N/A
PB 1010	10' x 10' x 7'	574	12.0	N/A	\$ 19,070	\$ 17,850	N/A
PB 1012	10' x 12' x 7'	697	14.4	N/A	\$ 21,160	\$ 19,940	N/A

Other sizes and shapes available. Please call for quote. Plywood exterior: deduct \$24 per lineal foot of wall.

Panel-Built Sauna Upgrades

Description	Size	Item No.	List Price
Sidelite window panel	12"x30" or 16"x30", clear or tinted	Upgrade	\$ 265
Sidelite window panel	12"x60" or 16"x60", clear or tinted	Upgrade	\$ 270
Grid for window	For all window sizes listed above	Upgrade	\$ 155
Low voltage valance lighting Includes low voltage light strip, wood light valance and transformer.	4' up to 7'11" wall	3164-360	\$ 560
Low voltage valance lighting Includes 2 low voltage light strips, wood light valance(s) and transformer.	8' up to 11'11" wall	3164-363	\$ 1,060
Spectra light kit Includes 2 interior and 3 exterior white lights, 3 interior color lights and 15 amp plug-in.	For use with SaunaLogic control only	3162-146	\$ 205
Spectra light kit Includes 2 interior and 3 exterior white lights, 3 interior color lights and 15 amp plug-in.	For use with all other controls and heaters	3162-145	\$ 370
Deluxe Interior (up to 7' x 7') Includes Valance Lighting, Deluxe Bench Skirts, Deluxe Backrests and Deluxe Head & Leg Rest.		Upgrade	\$ 1,845
Starburst Interior (up to 7' x 7') Includes Valance Lighting, Wedge-shaped Starburst Corner Bench Section, Curved Bench Front, Bench Skirts, Backrest and Deluxe Head & Leg Rest.		Upgrade	\$ 2,245

CUSTOM-CUT SAUNA ROOMS

All Custom-Cut sauna packages are manufactured of clear Western Red Cedar and include the following: the heater noted, rocks, stainless steel bucket and ladle, wall light, 5" thermometer, duckboard for walk area, headrest(s), heater guard, 24" x 80" pre-hung all glass bronze tint door (27-1/2" x 82-1/4" R.O.) and necessary hardware, pre-built benches assembled from the bottom with stainless steel screws, pre-cut T & G for interior walls and ceiling, corner and cove moulding, interior door casing, sliding vent valve, two (2) vent grilles, foil vapor barrier, backrest for each upper bench and hardware package.

Model	Size (I.D.)	Cu. Ft.	kW	Pkg. w/ S-tonttu heater	Pkg. w/ Digital control	Pkg. w/ HSC control	Pkg. w/ Built In control
CC 44	4' x 4' x 7'	106	3.0	N/A	\$ 5,450	\$ -	\$ -
CC 45	4' X 5' X 7'	133	4.5	N/A	\$ 6,000	\$ 5,390	\$ 5,150
CC 46	4' x 6' x 7'	161	4.5	N/A	\$ 6,760	\$ 6,160	\$ 5,530
CC 47	4' x 7' x 7'	188	4.5	\$ 10,290	\$ 6,800	\$ 6,300	\$ 7,110
CC 48	4' x 8' x 7'	215	6.0	\$ 10,760	\$ 7,270	\$ 6,820	\$ 6,610
CC 55	5' x 5' x 7'	168	4.5	N/A	\$ 6,110	\$ 5,630	\$ 5,400
CC 56	5' x 6' x 7'	202	6.0	\$ 9,990	\$ 6,500	\$ 6,050	\$ 5,830
CC 57	5' x 7' x 7'	236	6.0	\$ 10,600	\$ 7,110	\$ 6,660	\$ 6,460
CC 58	5' x 8' x 7'	271	6.0	\$ 11,190	\$ 7,720	\$ 7,230	\$ 7,030
CC 66	6' x 6' x 7'	243	6.0	\$ 10,540	\$ 7,060	\$ 6,610	\$ 6,400
CC 67	6' x 7' x 7'	285	8.0	\$ 10,960	\$ 7,490	\$ 7,120	\$ 6,930
CC 68	6' x 8' x 7'	326	8.0	\$ 11,600	\$ 8,140	\$ 7,770	\$ 7,580
CC 69	6' x 9' x 7'	367	8.0	\$ 11,990	\$ 8,510	\$ 8,150	\$ 7,960
CC 610	6' x 10' x 7'	408	8.0	\$ 12,370	\$ 8,900	\$ 8,550	\$ 8,340
CC 77	7' x 7' x 7'	333	8.0	\$ 11,270	\$ 7,800	\$ 7,450	\$ 7,240
CC 78	7' x 8' x 7'	381	8.0	\$ 12,000	\$ 8,550	\$ 8,190	\$ 7,990
CC 88	8' x 8' x 7'	436	10.5	N/A	\$ 11,260	\$ 10,010	N/A
CC 810	8' x 10' x 7'	547	12.0	N/A	\$ 12,090	\$ 10,900	N/A
CC 1010	10'x10'x 7'	685	12.0	N/A	\$ 13,030	\$ 11,780	N/A
CC 1012	10'x12'x7'	824	14.4	N/A	\$ 14,030	\$ 12,790	N/A
CC 1112	11'x12'x7'	991	14.4	N/A	\$ 15,730	\$ 14,480	N/A

Custom-Cut Sauna Upgrades

Description	Size	Item No.	List Price
Sidelite window panel	16"x60" and 12"x60" clear or tinted	Upgrade	\$ 410
Sidelite window panel	16"x30" 12"x30" clear or tinted	Upgrade	\$ 380
All sidelight windows use tempered glass. Custom sizes are available. Please call for quote.			
Low voltage valance lighting	4' up to 7'11" wall	3164-360	\$ 560
Includes low voltage light strip, wood light valance and transformer.			
Low voltage valance lighting	8' up to 11'11" wall	3164-363	\$ 1,070
Includes 2 low voltage light strips, wood light valance(s) and transformer.			
Spectra light kit	For use with SaunaLogic control only	3162-146	\$ 200
Includes 2 interior and 3 exterior white lights, 3 interior color lights and 15 amp plug-in.			
Spectra light kit	For use with all other controls and heaters	3162-145	\$ 370
Includes 2 interior and 3 exterior white lights, 3 interior color lights and 15 amp plug-in.			
Deluxe Interior (up to 7'x7')		Upgrade	\$ 1,840
Includes Valance Lighting, Deluxe Bench Skirts, Deluxe Backrests and Deluxe Head & Leg Rest.			
Starburst Interior (up to 7'x7')		Upgrade	\$ 2,240
Includes Valance Lighting, Wedge-shaped Starburst Corner Bench Section, Curved Bench Front, Bench Skirts, Backrest and Deluxe Head & Leg Rest.			

SAUNA HEATERS AND CONTROLS

JUNIOR SERIES Heaters with rocks. Control and contactor not included in price.

Please Note: Must order SaunaLogic control and contactor box separately. SaunaLogic control is only compatible with the Spectra light kit, cat. # 3162-146. See page 19 for pricing.

Model	KW	Volts	Phase	Min/Max Cu. Ft.	Item No.	List Price
Junior 2.2D	2.2	120	1	45/100	9053-118	\$ 915
Junior 2.2D	2.2	240	1	45/100	9053-119	\$ 915
Junior 3.0D	3.0	120	1	70/150	9053-120	\$ 955
Junior 3.0D	3.0	240	1	70/150	9053-121	\$ 955
Rocks, 22# box for Junior Heaters					2990-100	Included
SaunaLogic control					9201-450	\$ 128
Contactor Box: CBPK1 for 240v					9202-232	\$ 260
Contactor Box: CBPK1 for 120v					9202-231	\$ 260



DESIGNER B SERIES Heaters with built-in controls and rocks.

Model	KW	Volts	Phase	Min/Max Cu. Ft.	Item No.	List Price
DSNR-45B	4.5	240	1	100/210	9053-202	\$ 1,230
DSNR-45B	4.5	208	3	100/210	9053-203	\$ 1,230
Rocks, 33# box for DSNR-45B Heaters					2990-101	Included
DSNR-60B	6.0	240	1	175/310	9053-206	\$ 1,285
DSNR-60B	6.0	208	3	175/310	9053-207	\$ 1,285
DSNR-80B	8.0	240	1	250/425	9053-210	\$ 1,425
DSNR-80B	8.0	208	3	250/425	9053-211	\$ 1,425
Rocks, 50# box for DSNR-60B and DSNR-80B Heaters					2990-103	Included



DESIGNER S SERIES Heaters with rocks. Control not included in price.

Please Note: Must order SC control separately. See page 18 for pricing.

Model	KW	Volts	Phase	Min/Max Cu. Ft.	Item No.	List Price
DSNR-45S	4.5	240	1	100/210	9053-302	\$ 1,070
DSNR-45S	4.5	208	3	100/210	9053-303	\$ 1,070
Rocks, 33# box for DSNR-45S Heaters					2990-101	Included
DSNR-60S	6.0	240	1	175/310	9053-306	\$ 1,120
DSNR-60S	6.0	208	3	175/310	9053-307	\$ 1,120
DSNR-80S	8.0	240	1	250/425	9053-310	\$ 1,245
DSNR-80S	8.0	208	3	250/425	9053-311	\$ 1,245
Rocks, 50# box for DSNR-60S and DSNR-80S Heaters					2990-103	Included



SAUNA HEATERS AND CONTROLS

SC Controls

Use with Designer S, Octa and Pro series heater models.

		Item No.	List Price
SC-9	Sleek, flush mount design w/white face plate. Control has a 60 minute timer with nine-hour time delay (9+1), thermostat w/low-voltage remote in-room sensor, light switch and indicator light. 4-1/2"W x 10"H x 3-5/8"D. Perfect for residential use.	9201-221	\$ 380
SC-60	Nearly identical to the SC-9 except there is no 9-hour time delay feature (standard 60 minute timer) Perfect for club or home.	9201-231	\$ 380
SC-Club	Similar to the SC-9 except in place of the timer there is an on/off switch for continuous use. To be used only in commercial saunas having an attendant on duty.	9201-241	\$ 380
	Cover for SC Control, locking without holes (no access)	9262-10	\$ 345
	Cover for SC Control, locking with holes (access to timer)	9262-12	\$ 345
	Cover for SC Control, outdoor	4009-13	\$ 225



DIGITAL Heaters with rocks.

DC60 control required for this model: order control separately.

Please Note: The following heaters require separate controls which are not included in the heater price.

Model	KW	Volts	Phase	Min/Max Cu. Ft.	Item No.	List Price
Digital 45S	4.5	240	1	100/210	9053-702	\$ 1,380
Rocks, 33# box for Digital 45S Heaters					2990-101	Included
Digital 60S	6.0	240	1	175/310	9053-706	\$ 1,450
Digital 60S	6.0	208	3	175/310	9053-707	\$ 1,450
Digital 80S	8.0	240	1	250/425	9053-710	\$ 1,490
Digital 80S	8.0	208	3	250/425	9053-711	\$ 1,490
Rocks, 50# box for Digital 60S and Digital 80S Heaters					2990-103	Included



Programmable 3-button control for Digital Heaters

Includes 3-button programmable control and remote mounted sensor

Model		Item No.	List Price
DC60-CP	Polished Chrome finish.	9211-110	\$ 410
DC60-PB	Polished Brass finish	9011-120	\$ 450
DC60-WH	White finish	9211-140	\$ 450
DC60-PN	Polished Nickel finish	9211-150	\$ 450
DC60-BN	Brushed Nickel finish	9211-151	\$ 450
DC60-ORB	Oil Rubbed Bronze finish	9211-170	\$ 450
DC60-PG	Polished Gold finish.	9211-130	\$ 500



SAUNA HEATERS AND CONTROLS

OCTA SERIES Octagonal Floor Standing Heaters. Stainless steel exterior.

Includes 132 lbs. of Vulcanite rocks. SC or Digi VII control and contactor must be ordered separately.

Please Note: See page 21 for SC control pricing.

Model	KW	Volts	Phase	Min/Max Cu. Ft.	Item No.	List Price
Octa 105	10.5	240	1	390/600	9053-450	\$ 2,730
Octa 105/3	10.5	208	3	390/600	9053-452	\$ 2,730
Octa 120	12.0	240	1	510/740	9053-454	\$ 2,750
Octa 120/3	12.0	208	3	510/740	9053-456	\$ 2,750
Octa 144	14.4	240	1	630/950	9053-458	\$ 2,840
Octa 144/3	14.4	208	3	630/950	9053-459	\$ 2,840
Rocks, 70# for Octa Heaters (two boxes required)					2990-105	Included



PRO SERIES Floor Standing Heaters

Includes 132 lbs. of Vulcanite rocks. SC or Digi VII control and contactor must be ordered separately.

Please Note: See page 21 for SC control pricing.

Model	KW	Volts	Phase	Min/Max Cu. Ft.	Item No.	List Price
Pro-105	10.5	240	1	390/600	9053-402	\$2,020.00
Pro-105/3	10.5	208	3	390/600	9053-403	2,020.00
Pro-120	12.0	240	1	510/740	9053-406	2,080.00
Pro-120/3	12.0	208	3	510/740	9053-407	2,080.00
Pro-144	14.4	240	1	630/950	9053-410	2,210.00
Pro-144/3	14.4	208	3	630/950	9053-411	2,210.00
Rocks, 70# box for Pro Heaters (two boxes required)					2990-105	Included



Digi VII Controls for Pro Heaters

Please Note: Comes standard with 16' cable.

Digi VII Sleek digital control, on/off, 24 hour / 7 day programmable time and temperature, digital readout of temp. and time. Low voltage, flush or surface mount. Includes integral hi-temp audible alarm. 5-1/2" x 6-7/8" x 1-1/8" 9201-437 \$ 1,170 (commercial use only)

Digi VII Sleek digital control, on/off, 24 hour / 7 day programmable time and temperature, digital readout of temp. and time. Low voltage, flush or surface mount. Includes integral hi-temp audible alarm. 5-1/2" x 6-7/8" x 1-1/8" 9201-436 \$ 1,170 (60 minute)

Digi Control Cable, 25'	5331-120	\$	125
Digi Control Cable, 50'	5331-17	\$	240
Cover for Digi Control, outdoor	4009-17	\$	175



Digi Contactor Box (must order separately) SC Contactor Box (must order separately)

CB 9-1	9202-108	\$	1,100	< Single Phase >	CB7-1	9202-101	\$	660
CB9-3	9202-109	\$	1,100	< Three Phase >	CB7-3	9202-103	\$	660

Note: All Pro and Octa heaters require separate contactor box.

SAUNA HEATERS AND CONTROLS

DESIGNER T SERIES Heater

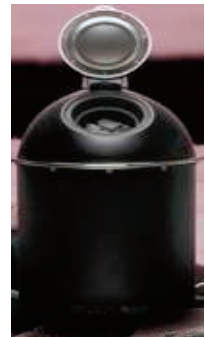
**Note: May only be used with T1 control. Order control separately.
No contactor box required.**



Model	KW	Volts	Phase	Min/Max Cu. Ft.	Item No.	List Price
DSNR-45T	4.5	240	1	100/210	9053-742	\$ 1,310
Rocks, 33# box for DSNR-45T heater.					2990-101	included
DSNR-60T	6	240	1	175/310	175/310	\$ 1,345
DSNR-80T	8	240	1	250/420	9053-750	\$ 1,385
DSNR-80T/3	8	208	3	250/420	9053-751	\$ 1,385
Rocks, 50# box for DSNR-60T and DSNR-80T heaters.					2990-103	included
T1 Touch Control	Programmable time and temperature, 24 hour preset, light button, sleek touch screen design.				9201-403	\$ 875

SAUNATONTTU SERIES Heat Storing Heaters

Includes handheld control and 200 lbs. of Vulcanite rocks. Always hot, always ready.
Very low surface temperature, small safety clearance.



Model	KW	Volts	Phase	Min/Max Cu. Ft.	Item No.	List Price
Saunatonnttu 4	4.6	240	1	175/310	9053-905	\$ 5,430
Saunatonnttu 6	6.0	240	1	250/425	9053-910	\$ 5,450
Rocks, 70# box for Saunatonnttu Heaters (three boxes required)					2990-105	Included

Sauna Heater Guards

Description	Item No.	List Price
Cedar 2-sided heater guard for Junior sauna heaters	7200-204	\$ 46
Cedar 2-sided heater guard for DSNR sauna heaters	7200-224	\$ 66
Cedar 3-sided heater guard for DSNR sauna heaters	7200-324	\$ 71
Cedar 2-sided heater guard for Octa/Pro sauna heaters	7200-234	\$ 128
Cedar 3-sided heater guard for Octa/Pro sauna heaters	7200-334	\$ 189
Wood heater guard for Saunatonnttu sauna heaters	7200-074	\$ 275

SAUNA ACCESSORIES

Description	Item No.	List Price
Armrest: Alder, adjustable	9263-192	\$ 128
Backrest: Alder, curved adjustable	9263-189	\$ 136
Backrest: Hemlock curved - Item #34 in Sauna brochure.	9263-190	\$ 54
Brush Set: two brushes - Item #10 in Sauna brochure.	9261-21	\$ 56
Brush: long handled - Item #9 in Sauna brochure.	9261-20	\$ 20
Bucket: 1.0 gallon, copper - Item #4 in Sauna brochure.	9260-07	\$ 69
Bucket: 1.0 gallon, stainless steel - Item #8 in Sauna brochure.	* 9260-08	\$ 66
Bucket: 1.0 gallon, wood with plastic liner - Item #1 in Sauna brochure.	9260-03	\$ 64
Bucket: 1.3 gallon, wood w/stainless steel liner - Item #2 in Sauna brochure.	9260-06	\$ 173
Bucket: 4.5 gallon, wood - Item #3 in Sauna brochure.	9260-05	\$ 166
Cleaner: Sauna Clean, 1 Liter bottle	2136-101	\$ 26
Cleaner: Wood Rinse, 1 Liter bottle	2136-103	\$ 32
Cleaner: Wood Soap, 1 Liter bottle	2136-100	\$ 30
Clock: bucket style **Note: not to be used in sauna** - Item #13 in Sauna brochure.	9253-08	\$ 87
Clothes Hook: 18 peg Hemlock	9253-016	\$ 25
Clothes Hook: 2 peg Hemlock	9253-012	\$ 18
Clothes Hook: 3 peg Hemlock - Item #38 in Sauna brochure.	9253-013	\$ 19
Clothes Hook: 4 peg Hemlock	9253-014	\$ 21
Duckboard: Cedar (per square foot)	7100-140	\$ 29
Floor Tile: vinyl, 12" x 12" center, burgundy	9270-602	\$ 13
Floor Tile: vinyl, 2" x 12" edge, burgundy	9270-622	\$ 10
Floor Tile: vinyl, 2" x 2" corner, burgundy	9270-642	\$ 5
Foil Vapor Barrier: 195 sq. ft. roll for rooms up to 4' x 6' x 7'	6801-065	\$ 54
Foil Vapor Barrier: 255 sq. ft. roll for rooms up to 6' x 7' x 7'	6801-085	\$ 70
Foil Vapor Barrier: 315 sq. ft. roll for rooms up to 7' x 8' x 7'	6801-105	\$ 86
Foil Vapor Barrier: 500 sq. ft. roll for rooms up to 8' x 10' x 7'	6801-167	\$ 130
Fragrance: sauna, 250 ml. Birch scent	9253-195	\$ 45
Fragrance: sauna, 250 ml. Herbal scent	9253-196	\$ 45
Fragrance: sauna, 250 ml. Pine scent	9253-197	\$ 45
Glass Globe: replacement for wall light	8309-01	\$ 34
Handle: decorative design, per pair	2150-05	\$ 55
Handle: trowel style, each - Item #39 in Sauna brochure.	2150-400	\$ 61
Headrest: Alder, curved	9263-221	\$ 107
Headrest: Alder, large - Item #14 in Sauna brochure.	9263-214	\$ 82
Headrest: Cedar, standard size	* 9263-208	\$ 47
Hygrometer: round 4" - Item #32 in Sauna brochure.	9251-213	\$ 27
Hygrometer: wood trim/metallic face - Item #26 in Sauna brochure.	9251-210	\$ 50
Ladle: 14" wood - Item #7 in Sauna brochure.	9261-01	\$ 34
Ladle: 19.5" Copper w/wood handle (style may vary) - Item #5 in Sauna brochure.	9261-07	\$ 39
Ladle: 19.5" wood - Item #6 in Sauna brochure.	9261-04	\$ 39
Ladle: 19.5" stainless steel w/wood handle - Item #8 in Sauna brochure.	* 9261-08	\$ 37
Ladle: 8" stumpy, wood	9261-02	\$ 26
Lampshade: Alder wood for corner - Item #11 in Sauna brochure.	9253-043	\$ 67
Lampshade: Alder wood for flat wall	9253-047	\$ 105
Leg-rest: Alder or Cedar, curved	9263-308	\$ 210
Light: ceiling mounted, for sauna	3160-10	\$ 92
Light: wall mounted, for sauna - Item #12 in Sauna brochure.	* 3160-01	\$ 59
Light: wall mounted with integral push-button on/off, for sauna	3160-02	\$ 87
Linens: towel with "Sauna" text (color varies) - Item #15 in Sauna brochure.	9239-009	\$ 136
Linens: wash mitten - Item #16 in Sauna brochure.	9239-045	\$ 44
Linens: backrub - Item #21 in Sauna brochure.	9239-055	\$ 48
Linens: seat cover - Item #22 in Sauna brochure.	9270-005	\$ 27
Linens: slippers, men's size large - Item #23 in Sauna brochure.	9239-005	\$ 110

SAUNA ACCESSORIES & FAR-INFRARED SAUNAS

Sauna Accessories

Description	Item No.	List Price
Sand Timer: 15 minutes - Item #18 in Sauna brochure.	9254-02	\$ 27
Sand Timer: metallic & wood - Item #19 in Sauna brochure.	9254-01	\$ 52
Sauna rocks: Vulcanite, 22# box	2990-100	\$ 52
Sauna rocks: Vulcanite, 33# box	2990-101	\$ 55
Sauna rocks: Vulcanite, 50# box	2990-103	\$ 67
Sauna rocks: Vulcanite, 70# box	2990-105	\$ 80
Sauna Sign: wood, laser engraved, Abachi - Item #40 in Sauna brochure.	9253-901	\$ 31
Sauna Sign: wood, laser engraved, Cedar - Item #41 in Sauna brochure.	9253-902	\$ 31
Sauna Wood Treatment: preserver & maintenance for sauna rooms	2136-102	\$ 137
Soap: sauna, Birch scent (style varies) - Item #35 in Sauna brochure.	9261-301	\$ 14
Soap: sauna, tar	9261-302	\$ 11
Speaker Set: not installed, includes 2 speakers (9252-025), volume control (9252-021) & jack (4000-220)	9252-025	\$ 286
Thermometer/Hygrometer: round 4" - Item #33 in Sauna brochure.	9251-140	\$ 41
Thermometer/Hygrometer: round 5" - Item #29 in Sauna brochure.	9251-05	\$ 71
Thermometer/Hygrometer: round 7" - Item #30 in Sauna brochure.	9251-02	\$ 158
Thermometer/Hygrometer: wood trim/metallic face - Item #27 in Sauna brochure.	9251-132	\$ 71
Thermometer: round 5" - Item #28 in Sauna brochure.	*9251-033	\$ 39
Thermometer: round 4" - Item #31 in Sauna brochure.	9251-024	\$ 27
Thermometer: staff style, liquid filled - Item #17 in Sauna brochure.	9251-025	\$ 16
Thermometer: wood trim/metallic face - Item #25 in Sauna brochure.	9251-022	\$ 50
Ventilation valve for 9263-066 wood grill - Item #36 in Sauna brochure.	9263-045	\$ 37
Wood grill for 9263-045 ventilation valve - Item #37 in Sauna brochure.	9263-066	\$ 27

*This accessory comes standard with a PB or CC sauna room kit.

Custom Infrared Systems

Amerec Far-Infrared saunas provide soothing heat directly radiated to the body with very little pre-heating time required. The three most cited reasons for Infrared sauna bathing are detoxification, relieve aches & pains and relaxation.

Includes: SaunaLogic control, contactor box and IR panel kit (quantity of panels matched to room size).

Please Note: SaunaLogic control is only compatible with Spectra light kit #3162-146. See page 19 for pricing.

Prices shown below DO NOT include sauna room wood packages. Rooms are priced separately.

RETRO-FIT (must be installed in the field)

System	Description	Cu. Ft.	Heater Model	Item No.	IR System List Price
IS 100-17	120V, 15 amp, 1700W	70 - 100	Junior 1.7 kW	8802-300	\$ 2,660
IS 100-22	120V, 20 amp, 2200W	70 - 100	Junior 2.1 kW	8802-301	\$ 2,700
IS 200	240V, 2350W	100 - 150	Junior 3.0 kW	8802-302	\$ 3,385
IS 300	240V, 2950W	135 - 200	Viki 4.5 kW	8802-303	\$ 3,490
IS 400	240V, 3450W	175 - 310	Viki 6.0 kW	8802-304	\$ 3,940
IS 600	240V, 4450W	250 - 425	Viki 8.0 kW	8802-306	\$ 4,630

PRE-INSTALLED (at Amerec factory)

System	Description	Cu. Ft.	Heater Model	Item No.	IR System List Price
IS 100-17	120V, 15 amp, 1700W	70 - 100	Junior 1.7 kW	9202-240	\$ 3,930
IS 100-22	240V, 20 amp, 2200W	70 - 100	Junior 2.1 kW	9202-241	\$ 3,970
IS 200	240V, 2350W	100 - 150	Junior 3.0 kW	9202-242	\$ 4,650
IS 300	240V, 2950W	135 - 200	Viki 4.5 kW	9202-243	\$ 4,980
IS 400	240V, 3450W	175 - 310	Viki 6.0 kW	9202-244	\$ 5,630
IS 600	240V, 4450W	250 - 425	Viki 8.0 kW	9202-246	\$ 6,270

PRE-HUNG DOORS

Please specify door swing when ordering. When facing door from exterior: HR = Hinged Right, HL = Hinged Left

Description	Suggested R.O.	Swing	Item No.	List Price
AG 24/72 - 24" x 72" all glass door, bronze tinted, tempered glass.	27-1/2" x 74-1/4"	HR HL	7022-341 7022-342	\$ 820
AG 24/72 - 24" x 72" all glass door, satin, tempered glass.	27-1/2" x 74-1/4"	HR HL	7022-343 7022-344	\$ 1,030
AG 24/80 - 24" x 80" all glass door, bronze tinted, tempered glass.	27-1/2" x 82-1/4"	HR HL	7022-351 7022-352	\$ 900
AG 20/65 - 20" x 65" all glass door, bronze tinted, tempered glass.	23-1/2" x 67-1/4"	HR HL	7022-101 7022-102	\$ 780
AG 30/80 - 30" x 80" all glass door, bronze tinted, tempered glass.	33-1/2" x 82-1/4"	HR HL	7022-421 7022-422	\$ 1,000
AG 36/80 - 36" x 80" handicap accessible, all glass door, bronze tinted, tempered glass.	39-3/4" x 82-1/4"	HR HL	7022-551 7022-552	\$ 1,110
Doug Fir 24/72 - 24" x 72" door, with clear insulated tempered glass window.	26" x 74"	HR HL	7051-341 7051-342	\$ 1,100
Doug Fir 24/80 - 24" x 80" door, with clear insulated tempered glass window.	26" x 82"	HR HL	7051-351 7051-352	\$ 1,130
Doug Fir 30/80 - 30" x 80" door, with clear insulated tempered glass window.	32" x 82"	HR HL	7051-421 7051-422	\$ 1,150
Doug Fir 36/80 - 36" x 80" handicap accessible door, with clear insulated tempered glass window.	38" x 82"	HR HL	7051-551 7051-552	\$ 1,170
ADA door handle set			add	\$ 110.00
Grid for window of wood doors			add	\$ 190.00
Self-closing hinges (price is per hinge) for use with wood doors only.			add	\$ 25.00

Custom doors and jambs are available. Please call for quote.

Please Note: All doors are pre-hung and include all necessary hardware, latches and handles.



All-Glass AG



All-Glass AG
Satin Finish



Douglas Fir DF



Douglas Fir
with Grids

TERMS AND CONDITIONS

Prices: Prices in the current price book are subject to change without notice and supersede all previous price books, lists and quotations. All orders accepted are subject to prices in effect on the date the order is received. Possession of this book should not be construed as an offer to sell the products herein at the prices stated. Price does not include installation, freight or taxes. All prices are shown in U.S. dollars.

Order Acceptance: Acceptance of any order is subject to the terms and conditions appearing herein. No other terms and conditions, contained in the Buyer's purchase order, shipping release or elsewhere inconsistent or in difference to the terms and conditions herein shall be binding upon Amerec unless specifically agreed to in writing by Amerec.

Credit Policy: The acceptance of any order is subject to credit investigation and approval by Amerec's credit department. Delivery may be withheld on accepted orders, without any liability on the part of Amerec, if, in its opinion, the Buyer's ability to pay for the products on these terms and conditions is in doubt. Any remittance received from, or for the account of the Buyer, may be accepted or applied by Amerec against any indebtedness, regardless of any condition, provision or notation appearing on such remittance. If Amerec brings legal action to collect amounts due and owing by Buyer, Buyer agrees to pay for all attorneys' fees and cost incurred by Amerec in such action.

Late Payment / Service Fees: Interest rate of 1 1/2% per month will be charged from the date an account becomes past due. In addition to late payment charges, Buyer agrees to pay any and all collection costs, including reasonable attorney fees incurred by Amerec in collecting balances not paid within terms.

Taxes: Prices are exclusive of any taxes. Buyer agrees to pay any applicable taxes, duty surcharges, fees or similar charges however imposed. A current resale tax exempt certificate must be filed with Amerec, or applicable taxes shall be added to the price and terms contained.

Freight Policies: All shipments are F.O.B. factory or distribution center and policies apply to all shipments within the continental United States, excluding Alaska, Puerto Rico, Hawaii and export. Amerec reserves the right to choose transportation carriers and shipping location based on lowest rate medium of transfer. Buyer may request specific carrier on orders shipping freight collect.

Partial Shipment: Unless otherwise specified, Amerec may make partial shipments and each shipment shall be deemed a separate sale. Buyer shall accept and pay for shipment regardless of any prior or subsequent failure to deliver any other shipment.

Order Changes: Only when Amerec's Customer Service Department receives a written request via fax or email will any changes, cancellations, deletions or additions to orders be initiated. If an order has reached the shipping department, no changes can be made.

Shipping Weights & Dimensions: Approximate shipping weights and dimensions are shown for Buyer's convenience and are not guaranteed.

Shortage or Variance: Any shortages or variances from the packing list must be noted on the original bill of lading. For proper claim procedure to follow, Buyer should fax the bill of lading copy immediately to the Amerec Customer Service Department. No claims will be considered unless received within five (5) days of delivery.

Damage in Transit: Amerec is responsible for delivering product free of damage to freight carriers. Buyer should carefully inspect upon delivery to insure product is damage free. Any damages should be noted on the original bill of lading. The Buyer must contact the carrier to file a damage claim within ten (10) days of receipt. It is recommended the Buyer hold any damaged packaging until carrier's representative responds to Buyer's claim.

Return Goods: Approved written authorization is required from Amerec's Customer Service Department to return any products. All products returned without approved written authorization will be refused. Products authorized for return must be returned in their original packaging and in otherwise salable condition. A 15% restocking charge will be applied, along with any additional costs necessary to bring the product to salable condition. All credits will be issued in the form of a merchandise credit. Products that are damaged or not in otherwise salable condition, special order, parts of an inventory adjustment, phased out or discontinued items are not eligible for return or credit. Buyer is responsible for inbound and outbound freight and any freight damage.

Warranty: All Amerec products are covered by Amerec's Limited 5 Year Warranty unless otherwise noted.

Limitation of Liability: Amerec's liability for any and all claims of any kind, including negligence, for any loss or damage arising out of, connected with or resulting from Amerec's performance or breach of the terms hereof shall, in the aggregate, not exceed the purchase price of the particular product. In no event shall Amerec be liable for indirect, special, incidental or consequential damages resulting from or arising out of performance of or failure to perform its obligations hereunder, whether or not Amerec had been advised of, knew, or should have known of the possibility of such damages.

Severability: If any portion or provision of these terms applicable to any situation or circumstance is held invalid, the remainder of these terms or the remainder of such provision (as the case may be) and the application thereof to other situations or circumstances, shall not be affected thereby.

Waiver: Waiver by Amerec of any breach of these provisions shall not be construed as a waiver of any other breach.

Assignment: None of the Buyer's rights under these terms shall be assigned or otherwise transferred by the Buyer to any other person, whether by operation of law or otherwise, without Amerec's prior written approval.

Entirety of Agreement: These terms are intended as a complete and exclusive statement of the terms and conditions of this agreement. No other terms and conditions, whether contained in Buyer's purchase order, shipping release or elsewhere that are inconsistent with, additional to, or different from the terms and conditions herein shall be binding upon Amerec unless specifically agreed to by Amerec in writing.

Assent: Receipt by Buyer or acceptance of the order or receipt of the products without prompt objection to the terms and conditions herein set forth, constitutes acceptance by Buyer of these terms and conditions.

Customer Service for Amerec Steam: 800-331-0349 or fax 425-951-1130 or Email amerec@amerec.com

AMEREC STEAM

P.O. Box 2258 | 17683 128th Place NE, #C | Woodinville, WA 98072, USA

Toll-Free 1-800-331-0349

amerec@amerec.com | www.amerec.com

Amerrec reserves the right to change specifications and design without notice.

© 2012 Amerrec Steam

4213-14 04/12



Follow us on Twitter



Become our fan on Facebook

