

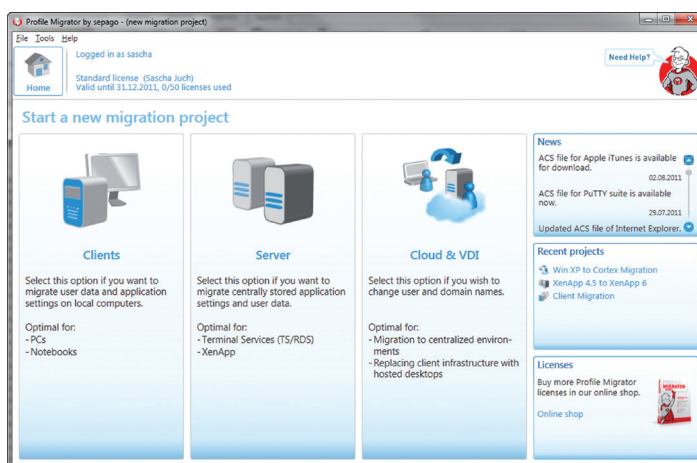
FEATURELIST



UNIQUE PERFORMANCE

FOR MIGRATION PROJECTS ON CLIENTS AND SERVERS

Profile Migrator 2.0 reads user settings and data from source systems, transforms and transfers them safely to arbitrary target systems. Profile Migrator permits easy migration of local, roaming and domain-based user profiles. The innovative ACS technology makes it possible to transfer settings for any windows-based application across systems, platforms, languages and versions. Profile Migrator can be executed via the graphical user interface or in command line mode. This makes it both an easy and a versatile savior for the individual user settings.



A singular software to address all demands

■ Centralized control of the profile migration

All migration parameters are defined via the intuitive GUI of the universal management console

■ Migration of user profiles on clients and servers

One sophisticated software to match all current migration scenarios

■ Profile cleanup during migration

Profile Migrator only writes selected settings from an old into a brand new user profile

MASTER ALL CURRENT MIGRATION CHALLENGES

Perfect migration to Windows 7 or Windows Server 2008 R2

Profile migration for all systems from Windows XP to Windows 7 as well as Windows Server 2003 to Windows Server 2008 R2

Unmatched migration across platforms, versions and languages

Migration across platform (32/64 bit) and version boundaries (XP/2003/2003 R2 to Vista/Win7/2008/2008 R2), across all system languages

Unequaled processing of Microsoft Office 2010

Out of the box migration of the user settings of Outlook, Word, Excel, Access and PowerPoint between the versions XP, 2003, 2007, and 2010

Instant migration of all essential OS settings

Migration of shortcuts, network settings, mouse settings, Internet options, and many more are ready to choose

Unrivaled migration to the Cloud

With Profile Migrator, you transfer selected user settings and -data from physical to virtual desktops



**PROFILE
MIGRATOR**
by sepago®

INNOVATIVE ACS TECHNOLOGY

Migration of user settings for arbitrary applications

ACS files for the migration of arbitrary and even in-house Windows-based applications can be created directly from out of the program.

Continuously growing ACS database

Provisioning of a large and continuously growing number of ACS files and scripts for the convenient out-of-the-box migration of common standard software.

Easily create your own ACS files

With the ACS Builder included, you quickly create your own ACS files directly from out of the program.

COMFORTABLE MIGRATION ON CLIENTS

No installation on clients required

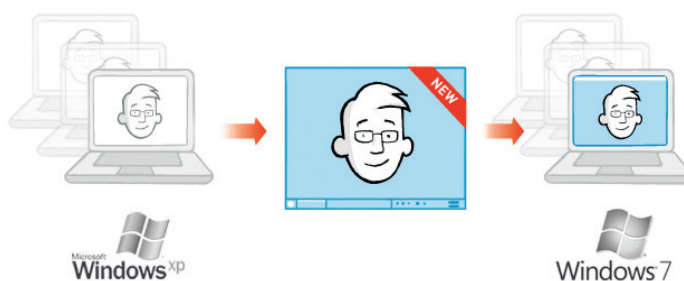
Central control of the migration of user settings and -data from an administrator machine.

Unattended offline migration

Clients can be considered automatically for profile migration at the next network login.

Additional migration of user data

With Profile Migrator you are able to migrate user data stored outside the profiles.



MIGHTY ENTERPRISE SOLUTIONS

Seamless integration into Desktop Management Suites

Due to the command line excitability, Profile Migrator can be integrated into Desktop Management Suites such as Microsoft SCCM.

Extended functionality through scripting

Simple integration of scripts that are to be executed before or after the migration of a user profile.

Effortless consideration of redirected folders

Automatic adaption of desired structure of redirected folders in 32 and 64 bit systems.

→ Profile Migrator is part
of the Citrix Desktop
Transformation Model.



**DOWNLOAD
FREWARE**



www.profilemigrator.com

Tel. +49 [0]221-801 93 95-12