



**Your Wealth,  
Your Future.**



# Content

05	<i>Introduction</i>
07	<i>Company Statement</i>
09	<i>SPC Management Fund</i>
11	<i>Our Performance</i>
13	<i>Facts</i>



# Beyond Expectations

## Introduction

Today's world is governed by engineered standards and precasted responses. Private as well as Institutional Investors increasingly find financial solutions showing characteristics such as uniqueness and customization. This development gives us an incentive to be different.

### **Creating a moment of Delight.**

Swiss Private Capital is your partner when it comes to finding the unique customized solution for your financial needs. We are a potent financial tower of strength that can cope with the global challenges in today's world of finance. Our team consists of experienced, well-trained staff who are always willing to go the extra mile for you.

Our internal structures are constantly undergoing strict review in order to stay flexible, agile and accommodative. Staying as close as possible to our clients while remaining the distance of respect is the

key balance leading to an exclusive level of trust between us and our clients. We understand your needs and guide you through the process of making more out of your life. Wealth is not an implicitness, it is a result arising out of hard work. We honour this effort and crown the same with the performance it deserves.

Our team offers you a managed fund solution giving the competitive advantage any investor is looking for. This will doubtlessly lead to your very own moment of delight.



## Company Statement

Swiss Private Capital is committed to offering the world's premier managed fund solution. To that end, we must continuously achieve superior performances while adhering to the highest standards of business conduct. These unwavering expectations provide the foundation for our commitments to those with whom we interact

### Delivering instead of promising

Swiss Private Capital's goal is to enrich our customer's personal lives by providing them with financial freedom. We made it our commitment to offer this service to as many people as possible, independent of gender, age, race, religion or financial background. We serve clients from more than 30 different

countries and are proud to say *"We are a multinational institution, delivering our products and services to a world without borders"*.

Substainability is a key part of our investment strategy and instead of focusing on deflagrated risk returns, we prefer to deliver longterm performances, ones that clients can trust in and build upon.

## We promise to deliver

- Competitive Price Structures
- First-Class Consultancy
- Best Customer Service
- 100 % Reliability
- Client Involvement in the decision-making process

# SPC Managed Fund

Our Managed Fund represents the centerpiece of our investment products. The fund is managed by professionals who take advantage of a variety of global opportunities. With this investment solution our clients funds are utilized together with that of others to create a single strong fund that provides significant investor benefits, including an instant increase in buying strength.

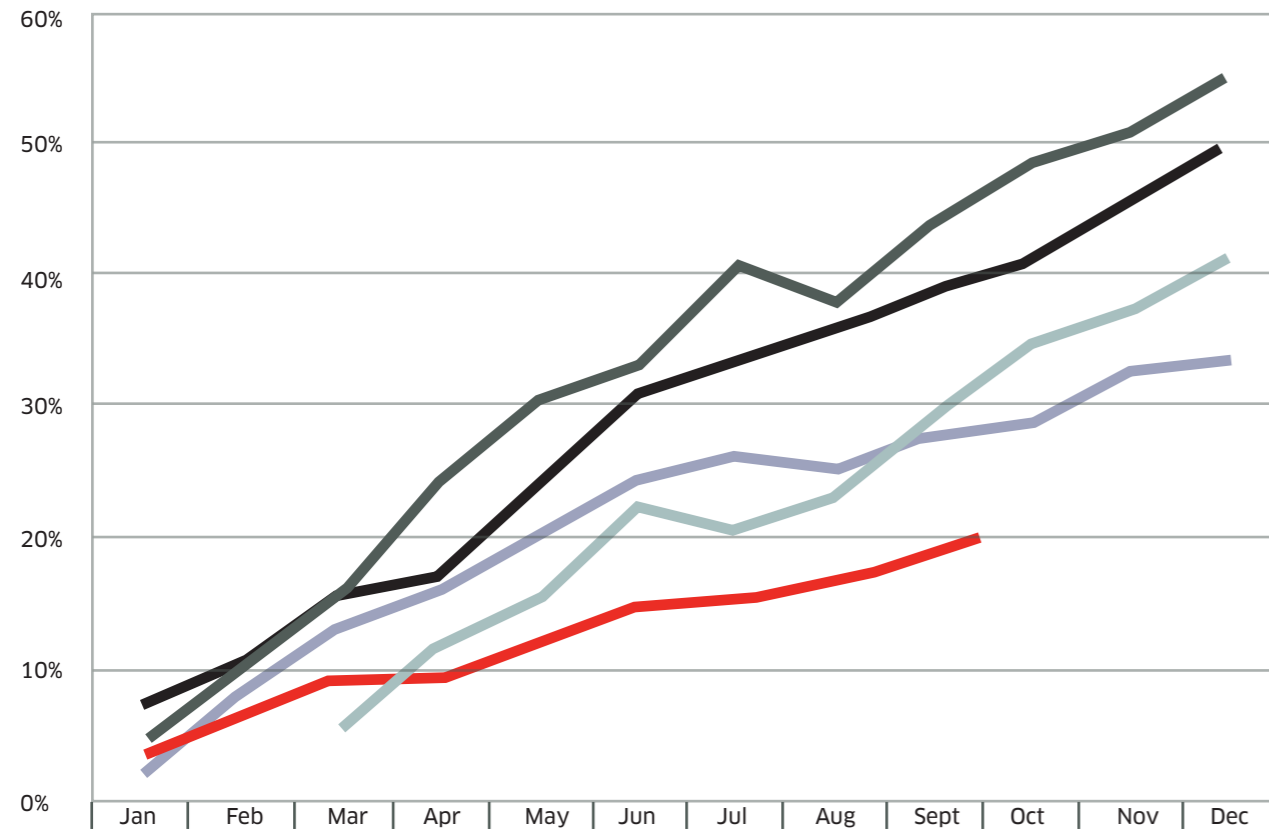


## Specifications

- Min. Investment 25.000 USD or equivalent
- Average of 2 - 3% per month
- Accounts may be held in:
  - EUR ● USD
  - GBP ● AUD
  - CHF ● JPY
- Long term proven performance
- Own segregated Account
- 24/7 online access
- No minimum investment period
- Withdrawals possible at anytime
- No country restrictions
- No Management Fee
- Account Setup within 48 hours

# Monthly Performance Since 2008

- 2011
- 2011
- 2010
- 2009
- 2008



jan	feb	mar	apr	may	jun	jul	aug	sep	oct	nov	dec	TOTAL
		5,8%	6,1%	4,2%	6,3%	-1,8%	2,7%	6,1%	5,2%	2,7%	3,7%	<b>41,00%</b>
4,3%	5,6%	6,3%	8,1%	6,3%	2,8%	7,2%	-2,8%	6,1%	4,3%	2,6%	3,7%	<b>54,50%</b>
7,2%	3,6%	4,8%	1,7%	6,2%	7,6%	2,4%	2,2%	3,3%	2,5%	4,5%	3,6%	<b>49,60%</b>
2,0%	6,2%	4,9%	3,2%	4,2%	3,9%	1,7%	-0,4%	2,2%	1,3%	3,4%	1,1%	<b>33,70%</b>
3,6%	3,2%	2,3%	0,3%	3,1%	2,4%	1,1%	2,1%	2,8%				<b>18,1%</b>

**Total Return**  
199,7%

## Our Performance

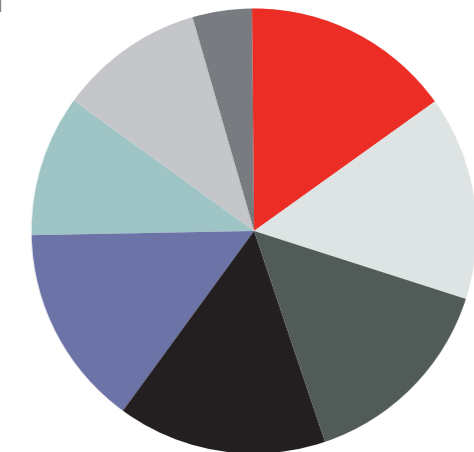
Even the best specifications do not prevail without a solid performance. Swiss Private Capital manages to offer great conditions with ultra conservative risk management and yet yield returns far above market benchmarks. Impossible? - No, we have proven this to be reality!

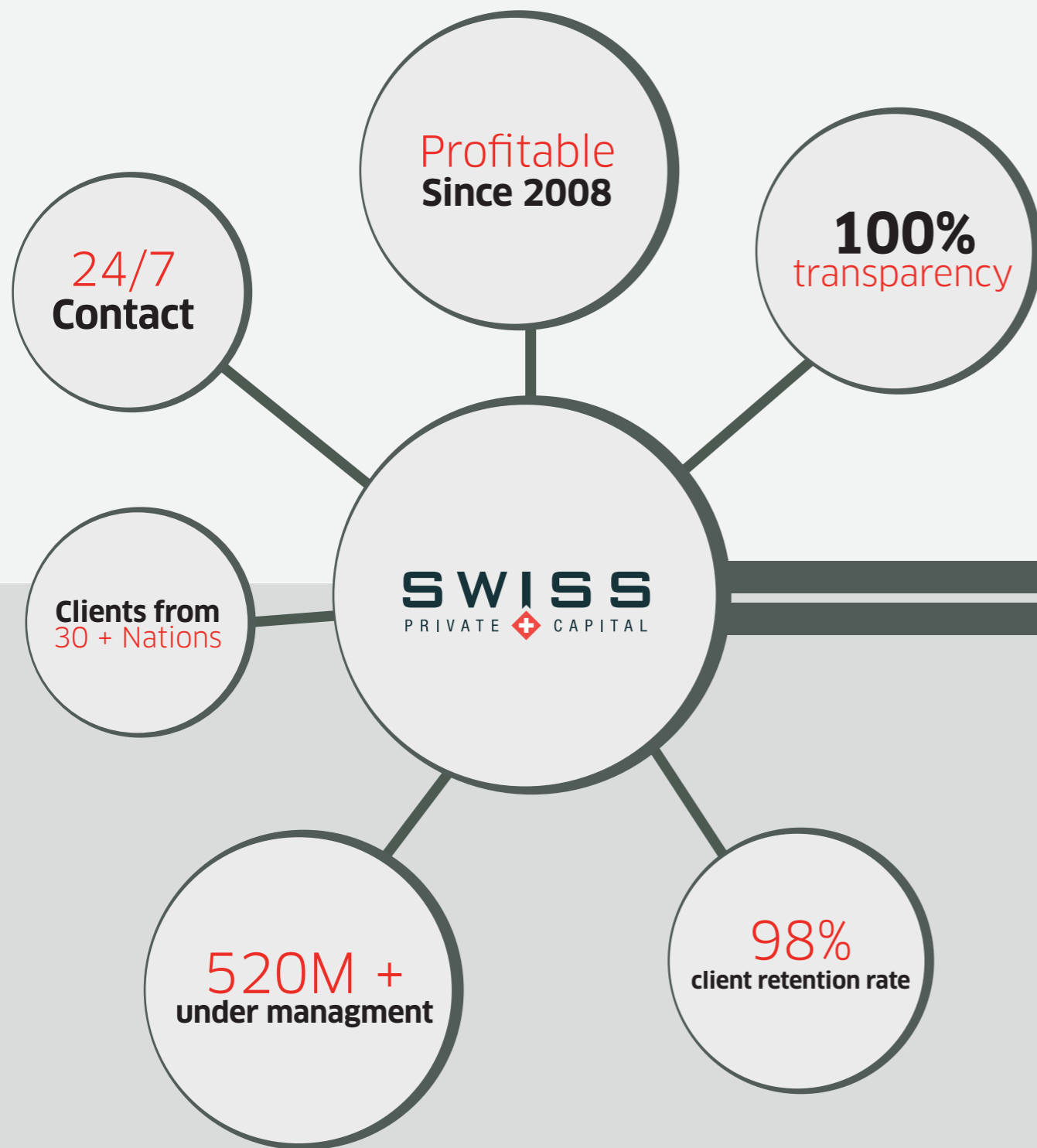
We remain to keep our competitive advantage as our performance clearly indicates.

Annualized Return	<b>199.7%</b>
Positive Months	<b>52</b>
Negative Months	<b>3</b>
Average Monthly Return	<b>3.63%</b>
Average Gain in Profitable Months	<b>3.94%</b>
Average Loss in Losing Months	<b>-1.67%</b>

### Portfolio Composition

- 15% PPP
- 15% Commodities
- 15% Stocks
- 15% Forex Spot
- 15% Futures
- 10% Venture Cap
- 10% Debt Purchase
- 5% Others





## Facts

Swiss Private Capital has the the professionalism, smartness and above all the financial strength to successfully manage private- as well as corporate investments. Facts are created by performances, such as those that we deliver every single day to our clients. As we continue to follow our track, we are ready, willing and able to deliver a care-free financial solution forming your wealth and your future.

## Risk Disclosure

Past results are not necessarily indicative of future results.

Trading foreign exchange carries a high level of risk, and may not be suitable for all investors. Before deciding to trade foreign exchange you should carefully consider your investment objectives, level of experience, and risk appetite. The possibility exists that you could sustain a loss of some or all of your initial investment and therefore you should not invest money that you cannot afford to lose. You should be aware of all the risks associated with foreign exchange trading, and seek advice from an independent financial advisor if you have any doubts.

# Contact

## Main Office

### **Swiss Private Capital FZC**

217 Twin Towers  
Baniyas Road  
Dubai, United Arab Emirates

## Representative Office

### **Swiss Private Capital Ltd.**

347 Fifth Avenue  
New York, NY 10016  
United States of America

**Toll Free: +1 800 666 0020**

**FAX: +1 866 666 8671**

**E-mail: [info@swiss-private.com](mailto:info@swiss-private.com)**

### **Swiss Private Capital Ltd.**

Level 50, 120 Collins St  
Melbourne, 3000  
Victoria, Australia

**Toll Free: 1300 663 883**

**E-mail: [info@swiss-private.com](mailto:info@swiss-private.com)**