

Screw Press

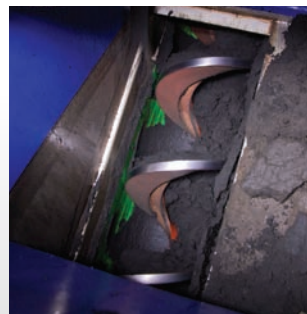
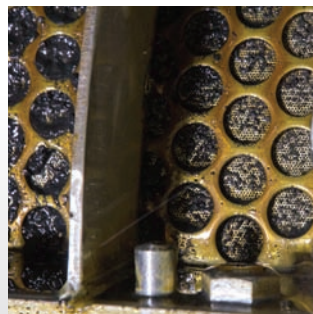
Dewatering Systems



Fully Automated Dewatering System

Your Partner in Dewatering

- Over 65 machines in service.
- Mobile pilot unit available for testing your biosolids.
- Widest range of unit sizes available.
- Includes polymer dosing and control systems for complete solutions.

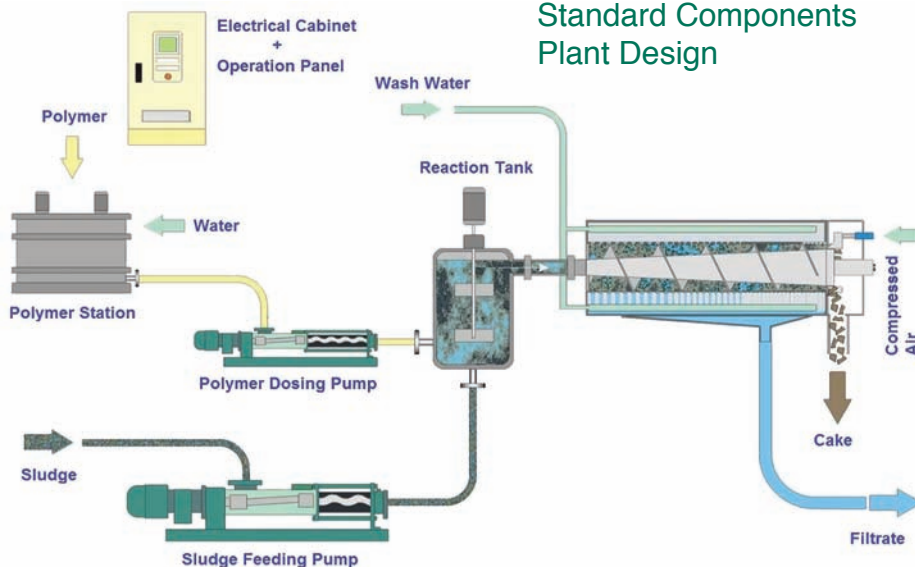


Your Partner in Solids Processing

Schwing Bioset's solids handling expertise with piston pumps, screw conveyors, sliding frames, live bottoms, and Class 'A' systems make us your ideal partner to provide one-stop biosolids processing solutions.

The Features You Want

Standard Components Plant Design



Features

- Low speeds and automated control allow for unattended operations.
- Long lifespan due to slow speeds and robust construction.
- All wetted parts are Stainless Steel.
- Screen casing is split to simplify screw removal and minimize footprint requirements.
- Perforated screen allows for tight tolerances and improved performance over wedge-wire screens.
- Sealing lip and screen can be replaced with screw in place.
- Low washwater requirements. Dewatering operations do not need to be suspended during cleaning. Cleaning cycle is typically once per day for 3 – 5 minutes.
- Unattended operation requires no additional personnel or specialized training.

Engineering That Matters

Engineering Features

- 🔗 Dewatering results similar to high speed centrifuges with double the machine life and a fraction of the energy and maintenance costs.
- 🔗 Eleven models available for all your dewatering needs.
- 🔗 Noise level less than 60 dB.
- 🔗 No vibration loads.
- 🔗 Enclosed system provides odor containment.
- 🔗 Low power requirements.
- 🔗 Low wash-water requirements.
- 🔗 Machined screens and screws provide tighter tolerance allowing improved dewatering, capture, and throughput than competitors units.



Performance You Can Count On

Model	Capacity Stabilized Sludge 2.5% DS (Dry lb/hr)	Capacity Digested Sludge 2.5% DS (Dry lb/hr)	Screw Press Motor (kW)	Screw Press Motor (HP)	Washwater (gal / day)	Washwater Pump (gal / min @ 45-60 psi)	Compressed Air For Wash Cycle (gal / day @ 45-90 psi)	Reaction Tank Motor (kW)	Length (in)	Length (mm)	Width (in)	Width (mm)	Height (in)	Height (mm)	Weight (lb)	Weight (kg)
FSP 200	40	50	0.37 / 0.5		5	2	1.0	0.37	79 / 2010		20 / 500		36 / 910		1100 / 500	
FSP 300	100	140	0.55 / .75		10	5	1.5	0.37	107 / 2720		32 / 800		42 / 1070		1760 / 800	
FSP 400	190	240	0.75 / 1.0		15	9	2.0	0.37	134 / 3410		33 / 850		29 / 1240		2860 / 1300	
FSP 500	290	350	1.1 / 1.5		30	13	2.0	0.37	165 / 4185		39 / 1000		56 / 1415		4840 / 2200	
FSP 600	440	620	2.2 / 3.0		40	17	2.5	0.55	195 / 4940		43 / 1100		60 / 1515		7040 / 3200	
FSP 700	640	860	2.2 / 3.0		50	25	3.0	0.55	208 / 5280		57 / 1440		72 / 1840		9460 / 4300	
FSP 800	860	1170	3.0 / 4.0		70	30	3.5	1.50	240 / 6105		60 / 1530		80 / 1980		13640 / 6200	
FSP 900	1100	1500	4.0 / 5.5		85	40	4.0	1.50	260 / 6805		64 / 1630		82 / 2080		17380 / 7900	
FSP 1000	1400	1900	5.5 / 7.5		105	45	4.0	1.50	280 / 7105		69 / 1730		85 / 2180		20680 / 9400	
FSP 1100	1800	2400	7.5 / 10		130	55	4.5	2.20	300 / 7605		72 / 1830		90 / 2280		24200 / 11000	
FSP 1200	2000	2700	7.5 / 10		155	65	5.0	2.20	320 / 8105		76 / 1930		94 / 2380		27720 / 12600	

A Name You Can Trust

Piston Pumps



Sliding Frame



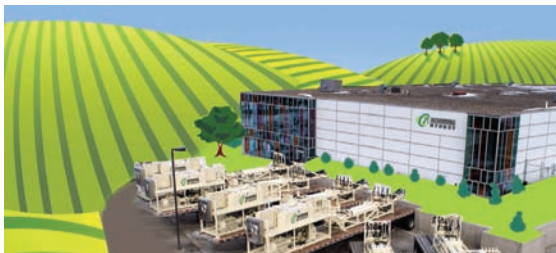
Fluid Bed Dryer



Container Wagon



Operating & Marketing Services



Bioset Process



Contact Information

www.schwingbioset.com
TEL 715-247-3433
FAX 715-247-3438
350 SMC Drive
Somerset, WI 54025

