

WHICH SWITCH IS WHAT SWITCH?

A USEFUL GUIDE FROM **socketstore**

Let us delve into the world of switches and circuits to explain what they are and where they're to be used...

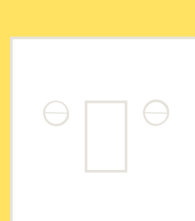
HEY SOCKETSTORE...

WHAT IS A NORMAL SWITCH?

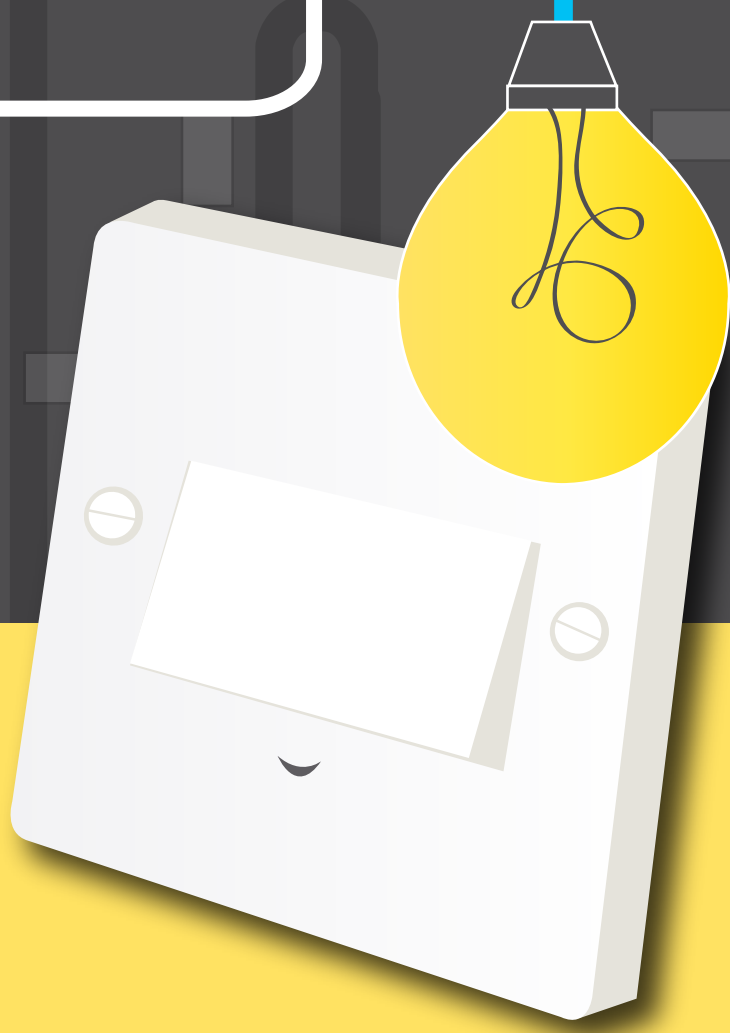
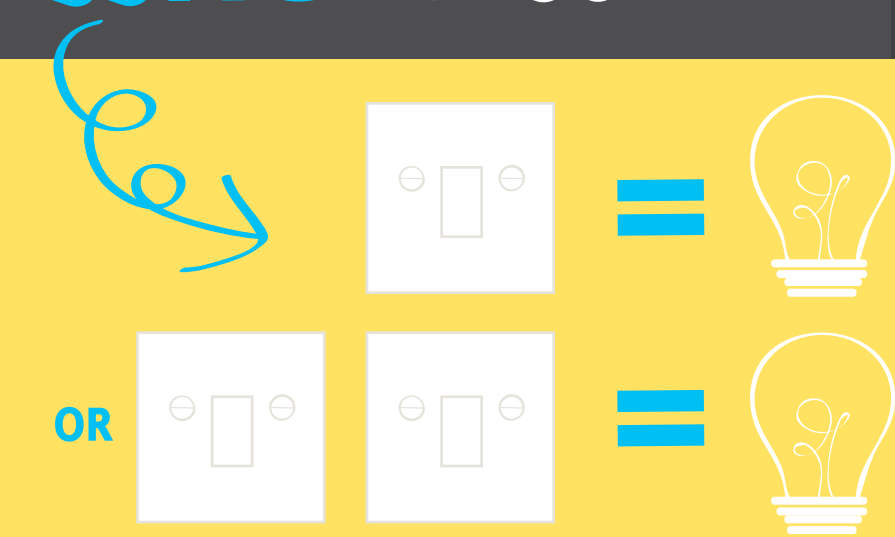
there are 2 types of normal switches...

THE ONE WAY SWITCH

YOU MIGHT USE ONE LIGHT AND HAD TWO SWITCHES IF YOU TO A ROOM AND SO TWO LIGHT SWITCHES

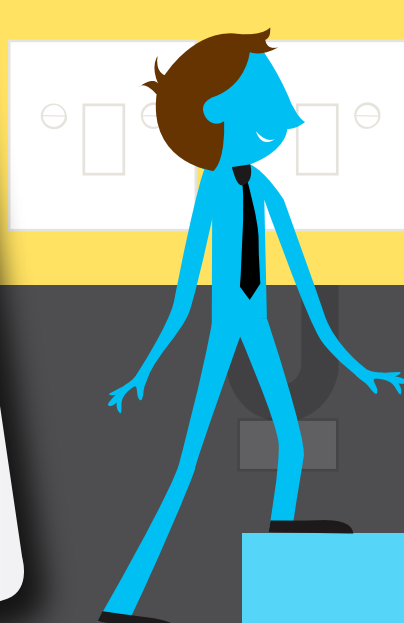


THE TWO WAY SWITCH



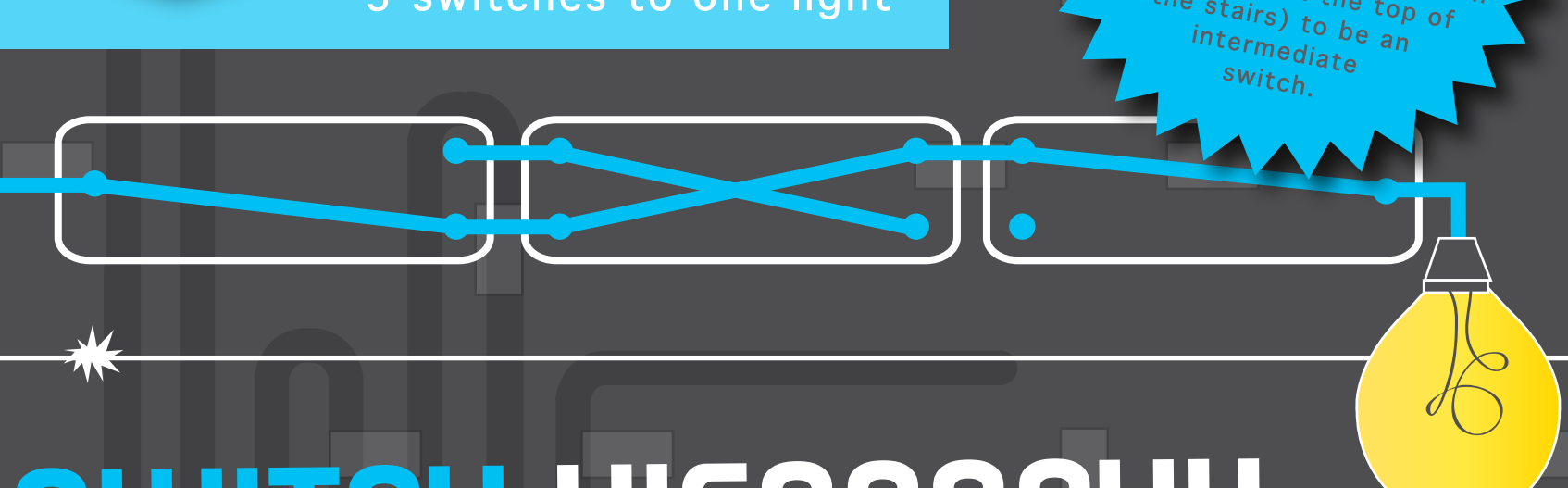
OKAY, SO WHAT'S AN INTERMEDIATE SWITCH?

INTERMEDIATE SWITCH = BIG BOY OF LIGHT SWITCHES



Used when perhaps there is a switch at the bottom of the stairs, one at the top of the landing. On this circuit you would need the middle switch (eg the one at the top of the stairs) to be an intermediate switch.

3 switches to one light



SWITCH HIERARCHY

1ST INTERMEDIATE

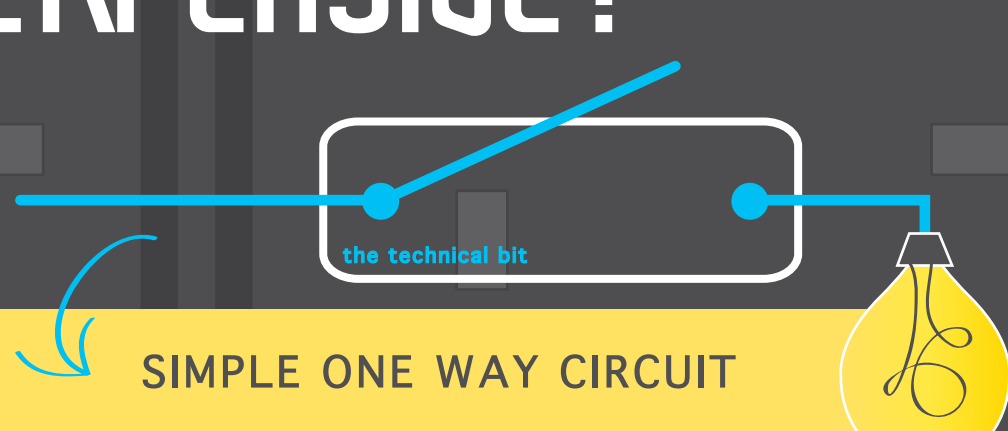
2ND TWO WAY

3RD ONE WAY

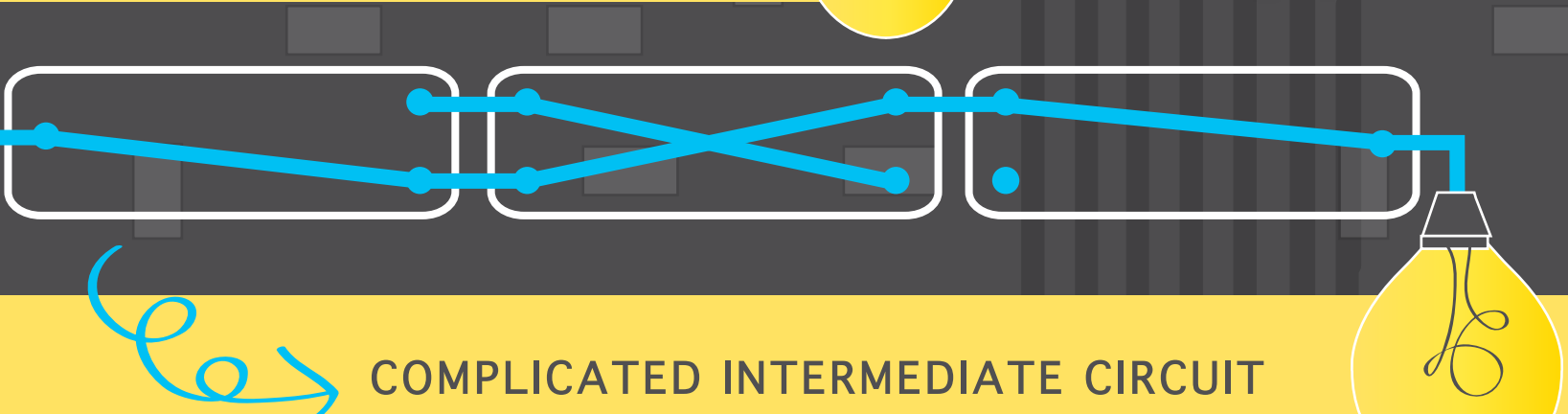


WHY ARE INTERMEDIATE SWITCHES SO MUCH MORE EXPENSIVE?

because the circuits are so much more complex they cost a lot more to manufacture



SIMPLE ONE WAY CIRCUIT



COMPLICATED INTERMEDIATE CIRCUIT

We hope that all helps, but of course if you are still unsure give us a call on **02920 004887** and we'd be happy to answer any of your questions.

socketstore

Infographic design by www.jessicadraws.com