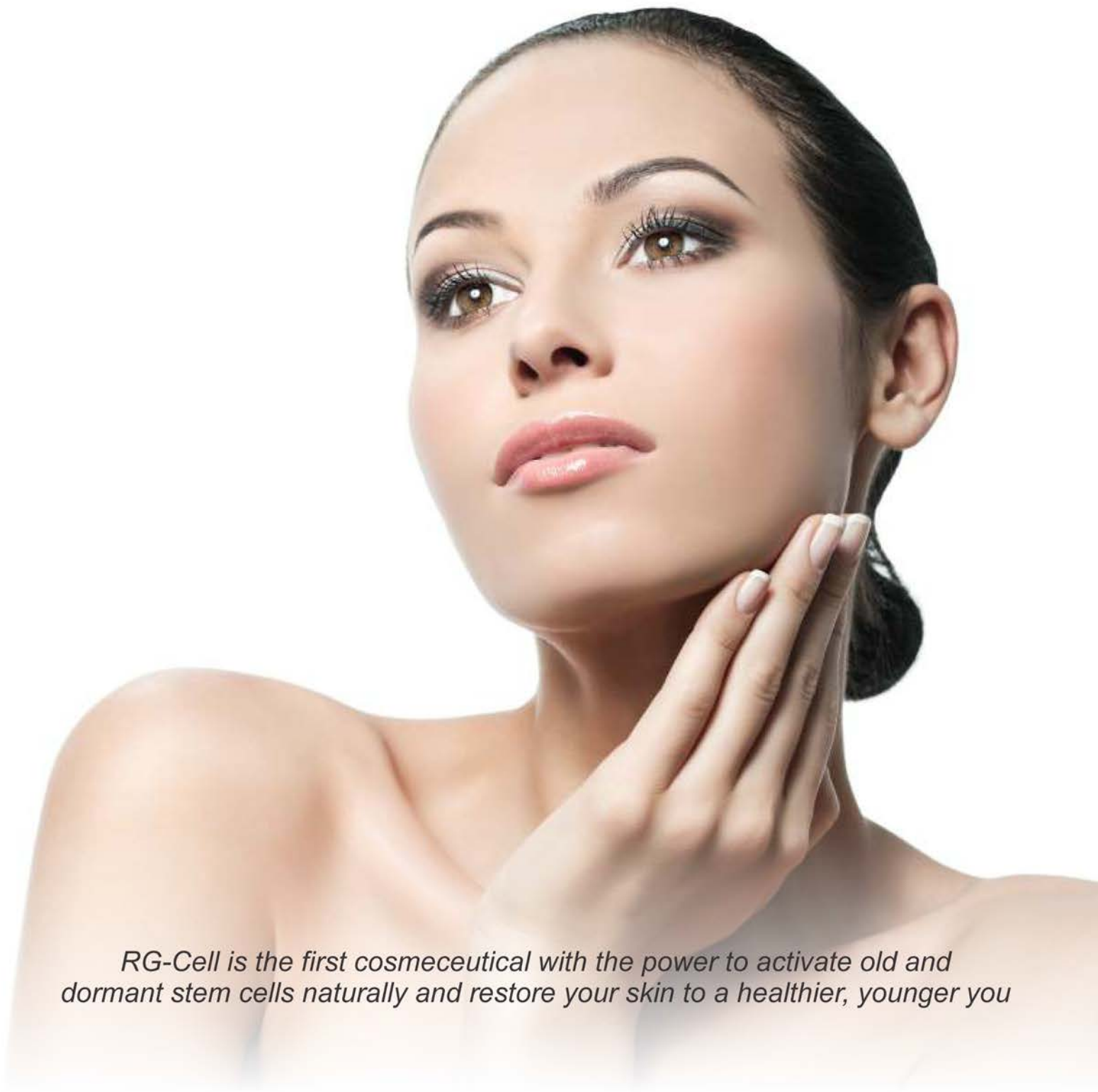




RG-Cell Super Stem Cell Support

Experience the New Dimension in Facial Skin Care



RG-Cell is the first cosmeceutical with the power to activate old and dormant stem cells naturally and restore your skin to a healthier, younger you

Introducing The Ultimate Choice for Skin Regeneration

RG-Cell Super Stem Cell Activator serum is a concentrated anti-aging Cosmeceutical that features a unique, proprietary formulated combination of:

- ✓ Epidermal Growth Factor (EGF)
- ✓ AFABlue Green Algae
- ✓ Caviar Extract
- ✓ Soy Phyto Placenta Extract
- ✓ And 15 other skin renewing ingredients.

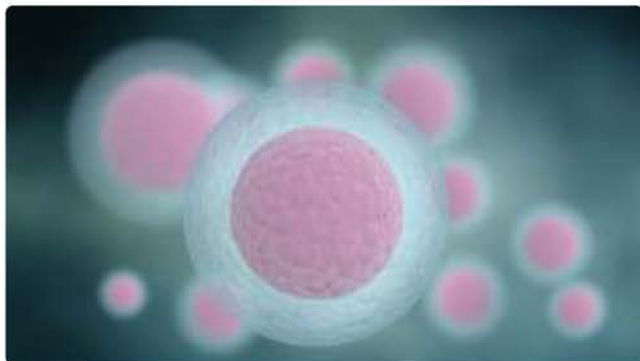
Each ingredient interacts synergistically signaling increased cellular activity for renewed collagen, elastin and other essential skin proteins. The result is a reduction in fine lines and wrinkles, restored radiance, improved suppleness and clean, healthy skin.



RG-Cell is the first cosmeceutical with the power to activate old and dormant stem cells naturally and restore your skin to a healthier, younger appearance.

Reactivating your dormant stem cells is the most effective process for skin rejuvenation and regeneration. In skin, messengers called cytokines, send signals to the stem cells to create proteins, carbohydrates and lipids. This remarkable process stimulates cellular activity in the skin, thereby visibly improving it's condition and restoring it's proper protective function. **RG-Cell** is ph balanced and it's many ingredients have been used through the ages to repair, condition and give the skin a healthy glow.

Stem Cells are present within our bodies and serve to maintain and repair the tissues in which they are found. Human skin is the largest repository of adult stem cells in the body. They reside in the basal layer of the epidermis and remain dormant.



RG-Cell is innovative and powerful stem cell technology which penetrates deep into the skin to:

- ✓ Repair DNA damage
- ✓ Stimulate new cell growth
- ✓ Aggressively eliminate wrinkles

Developed in collaboration with leading biochemistry and dermatology specialists, the **RG-Cell Super Stem Cell Activator** serum brings a youthful glow and radiance to even the most stressed out or sensitive skin.

“ Nature gives you the face you have at 20. Life shapes the face you have at 30. But at 50, you get the face you deserve.

~ Coco Chanel

70% of how you skin ages is NOT genetics, it is how you treat it.

98% of women feel that skin care should be an important part in men's grooming.

91% men should opt for skin care services which help improve their skin.

83% men who take care of their appearance have more control over their professional lives than men who do not.

83% of woman worry more about the marks their kids get in exams than the marks on their skin.

82% of married woman worry more about cooking the right food for their mothers-in law, than choosing the right sin care product.

75% of women had not seen a skin care physician in the last two years, yet nearly as many noted that it was important to have healthy, younger-looking skin.

70% of women are buying men's skincare products for their man, because the men don't care about it

69% of women complain of having "sensitive skin" and when researched, many of these complaints were tracked back to an overcomplicated skin care regimen and ingredients that overloaded or aggravated the very skin condition the product was claiming to help.

Your late twenties are when life's big changes happen - a career, marriage, even motherhood. But, in the middle of this hectic period, remember that this is when your skin begins to age too, making you look older. So, enjoy life, but always take time off to look after your skin with **RG-Cell Super Stem Cell Activator**.

Double-Layered Encapsulation Technology for Maximum Penetration

One of the most defining factors of **RG-Cell Super Stem Cell Activator** serum is the guarantee that the product is being absorbed deeply into the skin, reaching the basal layer where those dormant stem cells reside.

Double-layered * encapsulation technology improves penetration efficiency of active ingredients into the skin. In addition, the molecules are protected from endogenous proteases due to nano*capsulation.

By using double layered encapsulation we have effectively improved delivery into dermal layers of the skin. This recently patented technology, is one of the important factors that gives **RG-Cell Super Stem Cell Activator** its potency.

We are confident in the knowledge that the cosmeceutical is being absorbed deeply into the skin, reaching the basal layer where the stem cells reside.

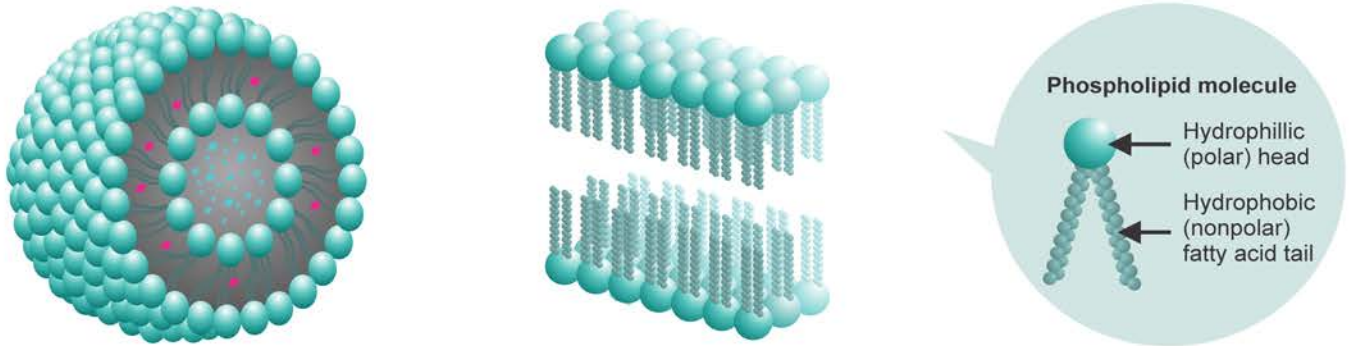
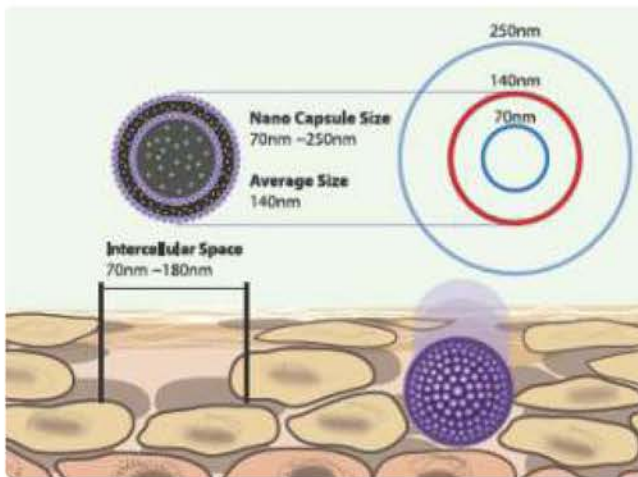
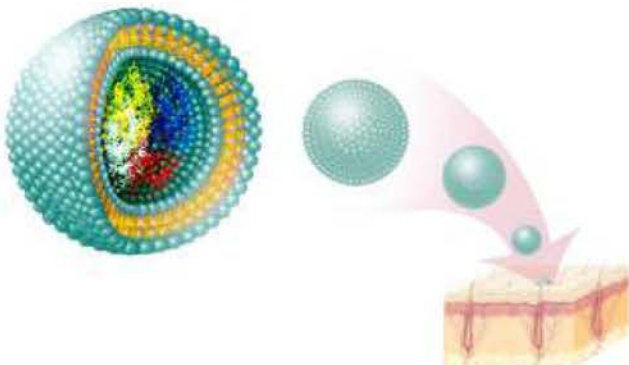


Diagram 1 shows the layers of a nano*capsule consisting of Phospholipid molecules. The polar head, and non*polar fatty acid tail together, provide membrane fluidity and mechanical strength.

Key Advantages of Double Layered Nano-Encapsulation



- ✓ High stability by double layered structure.
- ✓ High homogeneity: average diameter of particle is 140 nm and over 80% particles are below 100 nm size.
- ✓ Efficient Delivery of therapeutic cosmetic components into dermal layer.
- ✓ Key ingredients (e.g. Growth factors) are encapsulated in nanospheres.
- ✓ Helps to deliver the actives into the skin in a continuous time release effect.
- ✓ Tiny enough to penetrate deeply.
- ✓ High stability and high affinity to the skin.
- ✓ Prevents adverse skin reaction, as ingredients are released gradually over time.
- ✓ Compatible with all skin types.



Have a Look at **RG-CELL Super Stem Cell Skin Support** INGREDIENTS Below:



HUMAN OLIGOPEPTIDE-1 (EGF)

Epidermal growth factor - Stimulates new cell growth

Obtained by genetic engineering technology (microbial recombinant) totally identical to natural EGF, known as a "BEAUTY FACTOR", boosts and regulates stem cell proliferation. Because of its recombinant technology it is totally safe unlike other products that use human derived stem cells. The discovery of EGF won a Nobel Prize in Physiology and Medicine in 1986. Rh-EGF has now become the first choice to eliminate wrinkle without the adverse reactions of Botox Injection.



BLUE GREEN ALGAE EXTRACT (AFA)

Promotes cellular proliferation

Aphanizomenon flos-aquae (AFA) has been shown to stimulate human stem cell recruitment, migration and proliferation. The most nutrient rich and bio-active algae known, full of minerals, vitamins, enzymes, chlorophyll, amino acids, nucleic acids, fatty acids, and DHA. Due to the algae's nutritious soft cell wall, these nutrients are readily available to the body. Note: AFA is different than spirulina or chlorella.



CAVIAR EXTRACT

Collagen enhancer and Proteins cross linking inhibitor

Caviar extract was found to speed up the natural production of collagen up to 67% and significantly reduces the protein cross linking (fibronectin). It contains a wealth of vitamins and minerals to nourish the skin and reduce the signs of aging. Caviar is very rich in vitamins (especially vitamin A, group B, D, and E), oligo elements (sodium, potassium, calcium, magnesium, phosphorus, iron), micro-elements (Co, Cu, P, S), proteins and amino acids. It has moisturizing and emollient properties and its use is highly recommended for aged and wrinkled skin.



SOY PHYTO PLACENTA EXTRACT

Reduces wrinkles, restores youthful collagen type III

Also known as Cleopatra's Secret is rich in protein, amino acids. Soy phyto placenta reduces wrinkles and promotes an even complexion. It is used because it is virtually bio-identical to human placenta. Completely plant-based placental extract has the same anti-aging and repairing benefits as human placental proteins. Restores Youthful Collagen Type III.



ARGANIA SPINOSA KERNEL OIL (ARGAN OIL)

Skin conditioner, anti-oxidant, anti-microbial

Long prized in the Middle East as a beauty secret, Argan oil has numerous skin enhancing properties including free radical protection, anti-microbial and moisturizing properties and scar reduction.



COMMIPHORA MYRRHA OIL (MYRRH)

Analgesic, anti-septic, immune modulator

Spanning several millennia, Myrrh has been used for skin and medicinal purposes since the ancient Egyptians. Now it is highly prized for its remarkable anti-septic, analgesic and immune effects. Myrrh has been shown to have anti-bacterial effects primarily by improving antigen response. It may also have anti-tumor activity. In RG-Cell Myrrh is primarily used to reduce inflammation and "clean" the skin of unwanted pathogens that may contribute to acne, blemishes or scar formation.



MELALEUCA ALTERNIFOLIA (TEA TREE) LEAF OIL

Wound healing, anti-oxidant, anti-bacterial, anti-fungal

From the native Australian Melaleuca plant, Tea Tree oil has prized effects on the skin including immune modulation, anti-microbial and anti-fungal activity. It is especially effective against yeast species and acne vulgaris. The Australian Army puts it in soldiers' kits to help heal cuts and scrapes and prevent fungal infections.



ROSA CANINA SEED EXTRACT (ROSE HIP OIL)

Wound healing

Rose hip oil is effective on scars caused by acne, surgery, burns, chicken pox, injuries and cuts. It not only remodels damaged skin structure, it also improves skin color and elasticity. Rose hip oil halts and reverses typical signs of aging like wrinkles, crow's feet and sagging skin by accelerating the skin's cellular activity to improve skin renewal and cell regeneration. Rose hip oil restores the optimal balance of fatty acids and water which re-hydrates the skin.



ROSE FLORAL WATER

Skin emollient, healing and hydration agent

Rose water and its attendant oil have been shown to improve skin moisture and hydration, skin smoothness and improve the differentiation of epidermal keratinocytes while restoring skin barrier functions.

Have a Look at **RG-CELL** Super Stem Cell Skin Support INGREDIENTS Below:



LEVULINIC ACID

Strong antimicrobial, skin conditioner

Produced from recombinant vegetable sources. Classified in the EU as a skin conditioner and while used in perfumes, it also has strong antimicrobial properties. Sustainably sourced and non-sensitizing, levulinic acid has been chosen as a suitable non-toxic antimicrobial and extends product shelf life.



ADENOSINE

Anti-oxidant, Anti-Aging, Cellular Messenger

Adenosine penetrates deeply into the skin to help prevent wrinkles, reduce UVB sun damage. It is particularly effective for peri orbital wrinkles (crow's feet) and glabellar (forehead) frown lines. It has been shown to enhance the effects of Botox in facial wrinkle reduction. RG-Cell uses Adenosine delivered in a Lecithin based "Adenosome" for enhanced deep epidermal and dermal delivery.



CITRUS AURANTIUM DULCIS (ORANGE, NEROLI)

Skin circulatory agent, anti-microbial

Sourced from the Bitter Orange Tree Flowers, Neroli is often used in perfumes for its pleasant scent. It has also found a home in aromatherapy where it has been studied for its calming effects. But it also has circulatory stimulation properties, anti-microbial effects and anti-oxidant.



HYALURONIC ACID

Anti-wrinkle, anti-aging, skin softener, delivery agent

Injectable Hyaluronic Acid has achieved super star status as a dermal filling agent. But the topical form also has amazing properties including, skin structural support which makes the skin look softer and fuller. Due to RG-Cell's patented double layer delivery technology this agent is released at the deep epidermal and dermal level in many ways mimicking the action of injectable agents with daily use.



LAVANDULA ANGUSTIFOLIA (LAVENDER) OIL

Healing agent, anti-septic, anti-fungal

First documented in Roman Times, Lavender Oil is another skin active oil that has centuries of use behind it. It has many popular uses including cleaning and treating minor skin abrasions and bites because of its healing properties.



TETRAHYDROPIPERINE (COSMOPERINE)

Permeability enhancer, improves nutrient delivery

Cosmoperine, also known as tetrahydropiperine (THP), is derived from piperine, the active principle of black peppercorns (*Piper nigrum*) which acts as a penetration enhancer when added to water soluble ingredients. It works by enhancing the bioavailability of nutrients, including vitamins, minerals, coenzymes, and nutraceutical herbal extracts. Its effects are further enhanced by RG-Cell's double Layered Encapsulation Technology.



TOCOPHEROL (VITAMIN E)

Anti-oxidant, moisturizing

Vitamin E is necessary for the efficient utilization of oxygen in the tissues and for maintenance of connective tissues. As a strong intracellular and intercellular antioxidant agent, Vitamin E Oil protects fats from breakdown by free radical chain reactions. It also contributes to the stability of biological membranes and promotes intracellular respiration. It can provide moisture, protection, and healing. It smoothens wrinkles and cools and soothes dry irritated skin. It also helps and prevent and slow signs of ageing.



ANTHEMIS NOBILIS FLOWER OIL (CHAMOMILE OIL)

Anti-inflammatory

German Chamomile is often found in cosmeceuticals designed to fight acne because of its anti-septic and cleansing properties. In addition it reduces redness and swelling through immune modulation. It also speeds wound healing.

INACTIVE INGREDIENTS

Water, Polyglyceryl-5 Oleate, Polyquaternium-51, Sodium PCA, Glyceryl Caprylate, Sodium Cocoyl Glutamate, Caprylyl/Capryl Wheat Bran/Straw Glycosides, Fused Wheat Bran/Straw Glycosides

Restore Youthful Skin

RG-CELL Benefits



Regulating the expressions of EMCs like collagen, elastin, lamin etc.



Epidermal growth factor promotes new cell growth renewing skin's appearance.



AFA Algae extracts increase cell dynamism and cell regeneration ability.



Double-layered encapsulation technology for maximum penetration.



Hastens blood vessel synthesis around skin injuries; heals without scars.



Reduces blemishes and slows down the appearance of wrinkles.



Firms skin and rejuvenates cell proliferation/healing process.



Repair and reduce fine lines, wrinkles and facials aging.



Slows the aging process by deferring cell division.



Increases epidermal thickness and skin elasticity.



Restores skin radiance.



Improves and intensifies skin elasticity.



Refines large pores.



Moisturizes skin.



Reduces inflammation.



Heals skin.

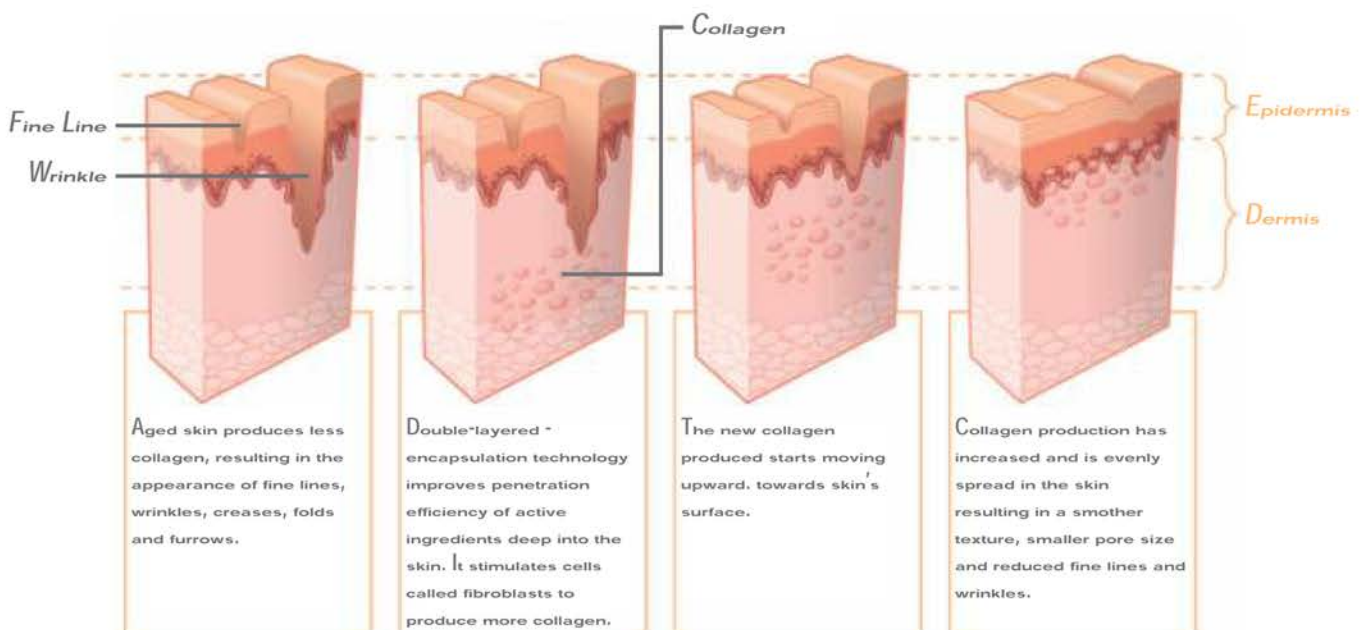


Softens skin.



Anti-oxidant.

Benefits of Technology



Experience the Stem Cell Miracle Now



Before - After



RG-CELL Testimonials

Dr. Dave, 48

“ I started using Rg-Cell 4 weeks ago and my mother and sister couldn't believe how great my skin looks.

Estelle, 71

“ I noticed after the first week the frown lines around my mouth have almost disappeared.

Kim (RN), Phoenix, Arizona

“ I would just like to say how impressed I am with RG-Cell. I have a scar from a burn on my chest that is discolored and has very bad texture. I noticed a small but very significant difference the next morning after just 1 application!!! I've used RG Cell now for 4 days and my scar is definitely fading and the skin texture is very much improved! If I'm getting this type of results after just 4 days (twice daily application) ... I can NOT WAIT to see how much better my skin will look after 4 months and beyond! I'm also using RG Cell on my face and neck and love what I'm seeing happen... THANK YOU!

Catherine, New York, New York

“ I noticed the dark circles under my eyes lightening up after just 3 days! I am very particular about what I put on my skin and RG-Cell, is one of the most amazing products I have ever tried. My skin feels smooth and silky after it's applied and leaves my skin with a porcelain glow.



www.DrDavesBest.com

DR. DAVE'S BEST
C/O CENTERFORCE IND., INC.
1050D MAIDENCREEK ROAD
FLEETWOOD, PA 19522

TOLL FREE (USA & CANADA) 866-654-7670

OUTSIDE THE US OR CANADA (610) 880-0075

FAX: (610) 916-3931



Information provided is provided for informational and marketing purposes only and is not meant to substitute for the advice provided by your own physician or other medical professionals. You should not use the information contained herein for diagnosing or treating a problem or disease, or prescribing any medication. If you have or suspect that you have a medical problem, promptly contact your health care provider. These statements have not been evaluated by the FDA. The FDA does not evaluate or test skin stem cell activating skin products. This product is not intended to diagnose, treat, cure or prevent any illness or disease. Do not use if you have allergies to any ingredients including soy and rose water. Always consult your physician if you notice any changes in your skin at any time. Do not use this product if you have had or have skin cancer until you clear it with you physician.