



BPA[®] 600

DUAL MODE BLUETOOTH[®] PROTOCOL ANALYZER



The ComProbe BPA 600 Protocol Analyzer includes powerful ComProbe software and the Dual Mode Bluetooth hardware interface.

In 2011, the ComProbe[®] BPA[®] 500 Dual Mode Bluetooth[®] Protocol Analyzer revolutionized Bluetooth analysis by presenting low energy and BR/EDR data in the same intuitive displays. Developers and test engineers on the leading edge of emerging low energy technologies relied on Frontline and the BPA 500 to simplify and accelerate the debugging process, and helped them bring a wave of new Bluetooth low energy products to market. The introduction of ProbeSync also made it possible for developers to view Bluetooth and 802.11 data, locked together and displayed in one comprehensive coexistence view for the very first time.

But the world is growing more mobile, and as engineers' applications, products and testing situations have become less confined to the test bench, Frontline has responded with a tool that is as portable as the devices it was designed to test.

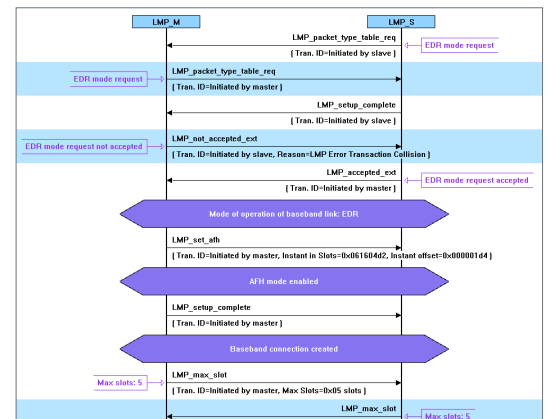
Key Features and Benefits

- **Ultra-Portable**
USB-powered and tiny footprint means you decide where and how to work
- **Greatest Possible Accuracy**
ProbeSync™ technology synchronizes timestamps between multiple ComProbes and technologies
- **Faster Debugging**
Bluetooth low energy and Classic Bluetooth data is displayed in a single graphical user interface
- **See events as they occur** through live decoding and decryption of encrypted data
- **Every Profile and Protocol**
- **Maximum Flexibility**
DecoderScript lets you specify decodes for custom protocols
- Capture multiple LE connections from the same LE or dual mode master
- Follow pairing and decrypt encrypted traffic including Secure Simple Pairing
- **Better Visibility**
Visibility into all three advertising channels concurrently, even before connection is established

Portability and Power

At long last, developers can unplug from the AC outlet and take their testing and development operations where these technologies actually live - the real world. Running on **USB power**, the ComProbe[®] BPA[®] 600 Dual Mode Bluetooth[®] Protocol Analyzer lets you decide how and where to work. But portability is only the beginning - the BPA 600 is equipped with more radios than the BPA 500, leaving the door open to imminent improvements like greater diversity of sniffable scenarios, and support for Bluetooth 4.1, currently in development.

Message Sequence Chart



Throughput graphs for average, 1 second and throughput over time.



Classic Bluetooth and low energy channels

Classic and low energy packets in a single view

Tooltips with comprehensive packet details

ComProbe is a registered trademark of Frontline Test Equipment, Inc.



From detailed decodes to concise graphical depictions of complex data, the USB-powered ComProbe BPA 600 Dual Mode Bluetooth[®] Protocol Analyzer is the most powerful and portable dual mode Bluetooth analyzer on the market today.

Hardware Specifications

- **Bus Type:**
USB 2.0 Mini B, compatible with USB1.1
- **Operating Frequencies:**
2402 MHz – 2480 MHz
- **Effective Receiver Sensitivity (conducted, not radiated):**
-81.5dBm for GFSK (BC4 radios)
-82.5dBm for GFSK (BC7 radios)
- **Power:**
USB
- **Dimensions:**
5" X 2.75" X 1.0625"
127mm X 70mm X 27mm
- **Weight:**
0.6lb / 272g
- **Temperature:**
Storage Temperature: 0° to 40° Celsius
32° to 104° Fahrenheit

Operating Temperature:
5° to 55° Celsius
41° to 95° Fahrenheit
- **Humidity:**
Operating: 10% to 90% RH
(noncondensing)
- **Debugs every Bluetooth Profile and Protocol**

AVDTP Recover	Baseband
AVDTP Report	LMP
BNEP	HCI
AT Commands	L2CAP eL2CAP
AMP Manager	SDP
AVCTP	RFCOMM
AVDTP Signaling	TCS
AVDTP	OBEX
MCAP	AVDTP Media

A2DP	BIP
AVRCP	BPP
AVRCP Browsing	FTP
FAX	OPP
Hands Free 1.6	MAP
HCRP	PBAP
HDP	SYNC
Headset	SAP
HID	SPP

The ComProbe BPA 600 Hardware Interface

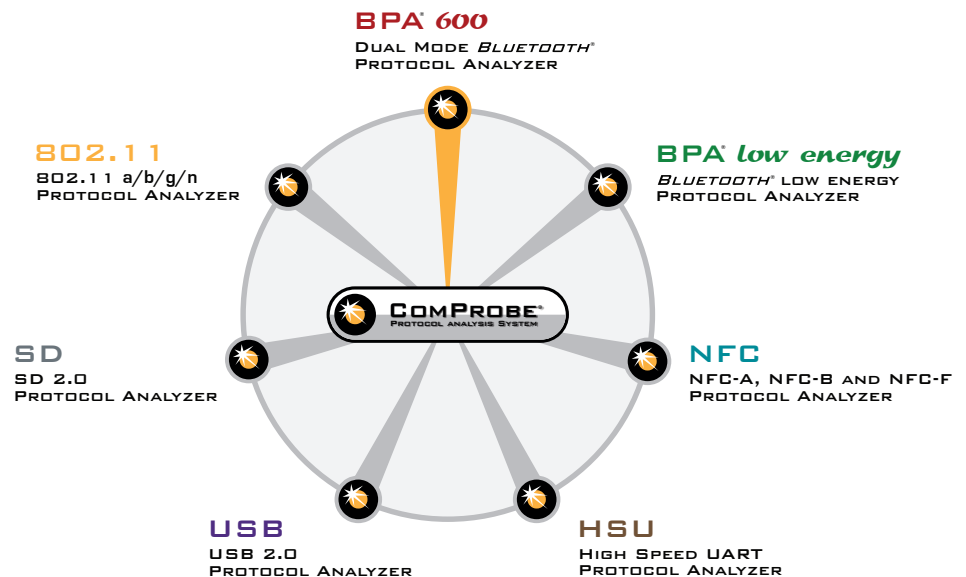
The ComProbe BPA 600 Protocol Analyzer includes the Dual Mode *Bluetooth* hardware interface, which supports the wireless capture of "classic" and low energy *Bluetooth* communications.

The Dual Mode *Bluetooth* hardware interface is one member of an extensive arsenal of technology-specific hardware interfaces, all functioning with the powerful ComProbe software. This modular approach allows greater flexibility in protocol analysis and debugging, and provides comprehensive coexistence views over virtually any combination of protocols.



Minimum PC Requirements

- Pentium PC 2Ghz or faster
- Windows XP (32-bit) or Windows 7 (32-bit or 64-bit)
- 2GB of RAM
- 50MB free disk space
- USB 2.0 port



The ComProbe Modular Approach

ComProbe software is at the core of Frontline protocol analysis, allowing technology-specific hardware interfaces to work individually or in combination with other hardware interfaces. This modular approach gives the developer or analyst the widest possible range of scenarios for debugging complex communications.

To order or for more information:

www.fte.com
sales@fte.com
1.800.359.8570 US & Canada
+1.434.984.4500
Fax: 434.984.4505



fte.com
frontline[®]
Debug Communications **Faster**SM