



5 Axis Fully Enclosed Twin Table



Model 5T5-6-5-48T Shown

STANDARD FEATURES

- ❖ Fagor 8055 Power
- ❖ ES 779 16 HP HSK
- ❖ 10 Position Tool Rack
- ❖ Fagor Sercos Drives
- ❖ 415-240 Volts
- ❖ Automatic Doors
- ❖ Door Interlocks
- ❖ 10.4" LCD Monitor

STANDARD MODELS

- ❖ DMS 5T5-6-5-48T

OPTIONAL FEATURES

- ❖ High Impact Fluorescent Lights
- ❖ Door Safety Sensors
- ❖ Light Curtain

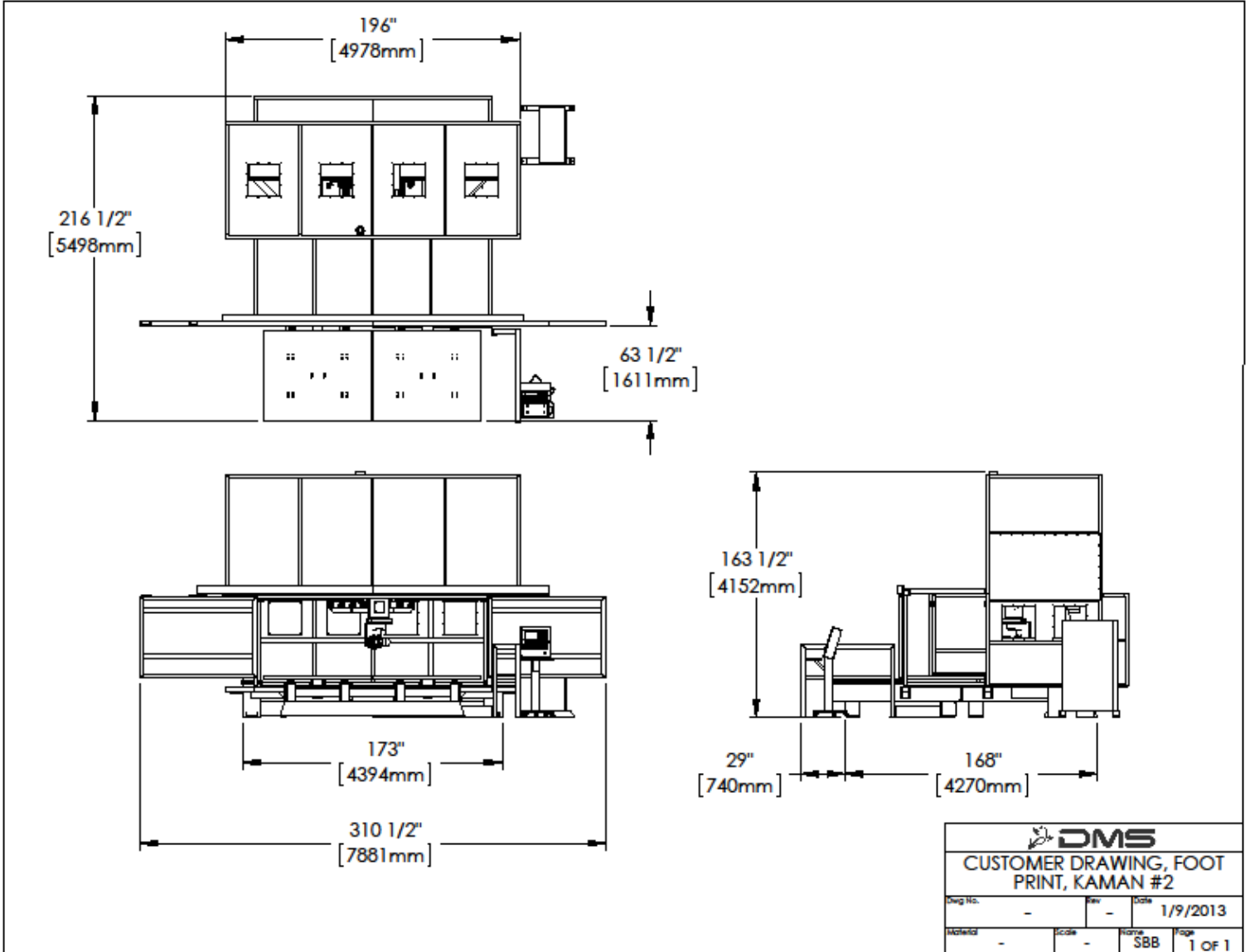
Diversified Machine Systems
2310 Executive Circle • Colorado Springs, CO 80906
Phone: (719) 226-5066 • Fax: (719) 226-9810
Website: www.dmscncrouters.com

Built in  America



DMS

5 Axis Fully Enclosed Twin Table



Diversified Machine Systems
2310 Executive Circle • Colorado Springs, CO 80906
Phone: (719) 226-5066 • Fax: (719) 226-9810
Website: www.dmsncrouters.com

Built in  America