



# Armored 300C tag

Chemical & Solvent Resistant • Waterproof • High Temperature • Harsh Environment • 360 Degree Read Profile • RFID Product

## Technical Data Sheet

**Part: #WF- SM-300C**

### General Description

#### Armored 300C tag

The Armored 300C tag, embedded in nickel plated steel case and super- high temperature ceramic, is directly mountable on any metallic surfaces and gives exceptional read/ write performances under extreme temperatures and environments. The only tag in the world that is metal, not just metal mount, the 300C tag can be welded directly onto any metal part or device. With a 360 degree read profile, this tag is very suitable for use in harsh environments and high temperatures be it in healthcare, manufacturing, construction or oil and gas industries.

Standards: ISO17665, ISO 11135, ATEX- compliant, RoHS compliant

- Excellent metal- mount performance
- Weldable and boltable on any metallic parts or devices
- Spherical readability enables long read distance from all angles and directions
- Resistant to harsh environments and high temperatures

### Applications

Construction, Oil, Gas, Water Pipelines, Metal Mount, Heavy Machinery, High Temperature, Harsh Environments

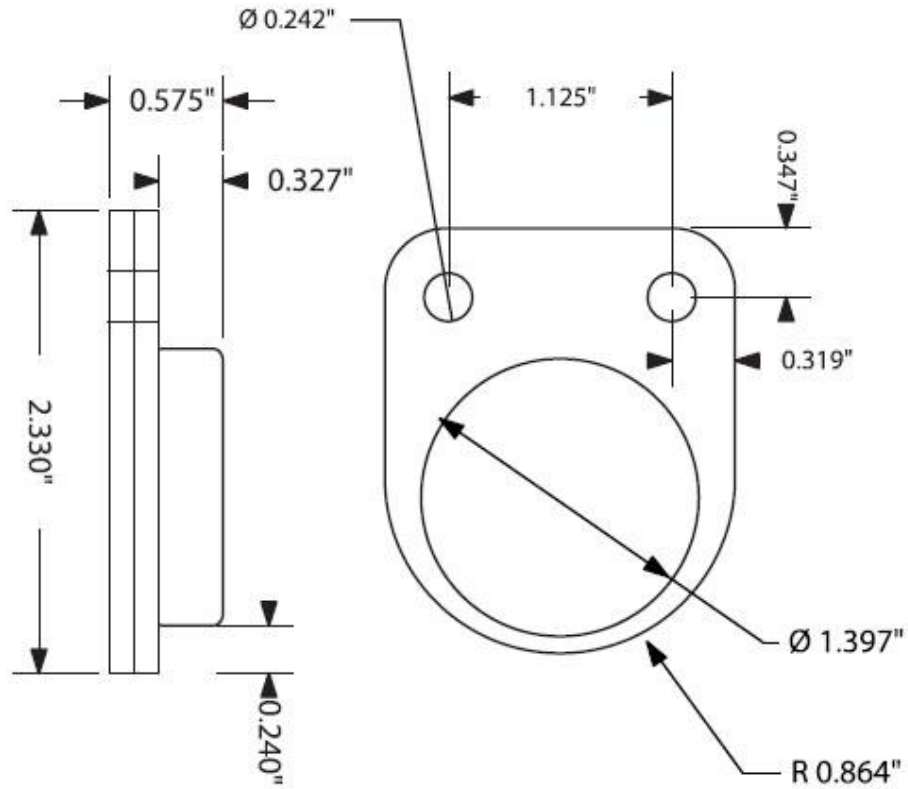
### Material Description

#### High- temperature Ceramic with Nickel Plated Steel Case

Test*	Temperatures and Duration	Results
Maximum Temperature	Long- term at 10 hr: 570°F (300°C)	RFID's performance/ function was not effected by test. There was slight cosmetic blistering. The tag read normal after the tests. *Test is not limiting.
Minimum Temperature	-40°F (-40°C)	
Temperature Cycling		The tag was cycled to 570°F at equilibrium for five times. Between each cycle, it was air cooled to room temperature and read with an RFID reader.

### RFID Performance

RFID Protocol:	UHF Class 1 Generation 2
Tag Type:	Passive Read/ Write
Read Range:	Approximately 3-6 ft
Frequency Range:	900 - 930Mhz
EPC Memory:	128 bits



ALL DIMENSIONS ARE IN INCHES  
UNLESS OTHERWISE SPECIFIED

TOLERANCES  
3 PLACE DECIMAL + OR-.005"  
2 PLACE DECIMAL + OR-.02"  
1 PLACE DECIMAL + OR-.1"

MAX SURFACE ROUGHNESS  
ALL MACHINED SURFACES  
EXCEPT AS NOTIFIED

BREAK SHARP EDGES AND CORNERS  
.010" MAX

Contact No.

**William Frick & Co.**

[www.fricknet.com](http://www.fricknet.com)

DWG.

Engr.

Chk.

Aprvd.

Armored 300C tag

Size.

DWG No.

WF- SM-300C

Rev.

