



400 million+

The number of connections across our wi-fi network in 2012/13



1.2

Number of devices each user typically uses to access wi-fi



20,000

In 12/13 we added on average over 20,500 new hotspots each week



1,511,369,559 MBs

Number consumed in Q4 12/13 alone



5 million

Number of BT Wi-fi hotspots in the UK



3.3 million

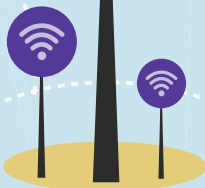
Number of Fon hotspots BT Broadband customers can use for free overseas

Celebrating

5

Million

BT Wi-fi Hotspots in the UK



13 Petabytes of Data

The volume of data consumed by BT Wi-fi users during 12/13



3.9 billion

The equivalent number of MP3 downloads

1,042 years

The amount of time you could have watched The Hobbit in HD over BT Wi-fi last year



624,000 miles

How far the equivalent number of smartphone photos could reach laid side-by-side



Based on an average file size of 135,000 bytes, there are 92 billion kitten photos in 13 petabytes.



Regional hotspots by region



- South East: 764,000
- London: 543,000
- Eastern: 519,000
- South West: 501,425
- Scotland: 464,000



UK Cities top six by hotspot volume

- London: 545,000
- Leeds: 35,000
- Birmingham: 34,000
- Glasgow: 32,000
- Edinburgh: 28,000
- Sheffield: 24,000

