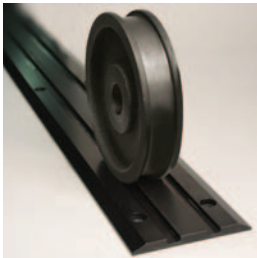


Mobilize your **Storage.** Maximize your **Space.**

ActivRAC™ 7M

MOBILIZED STORAGE SYSTEM

Easy to install, simple to use, and amazingly affordable. You truly can do more with less, using the all new **ActivRAC™ 7M Mobilized Storage System.**



RAIL DESIGN OPTIONS

Surface mount or recessed rail.



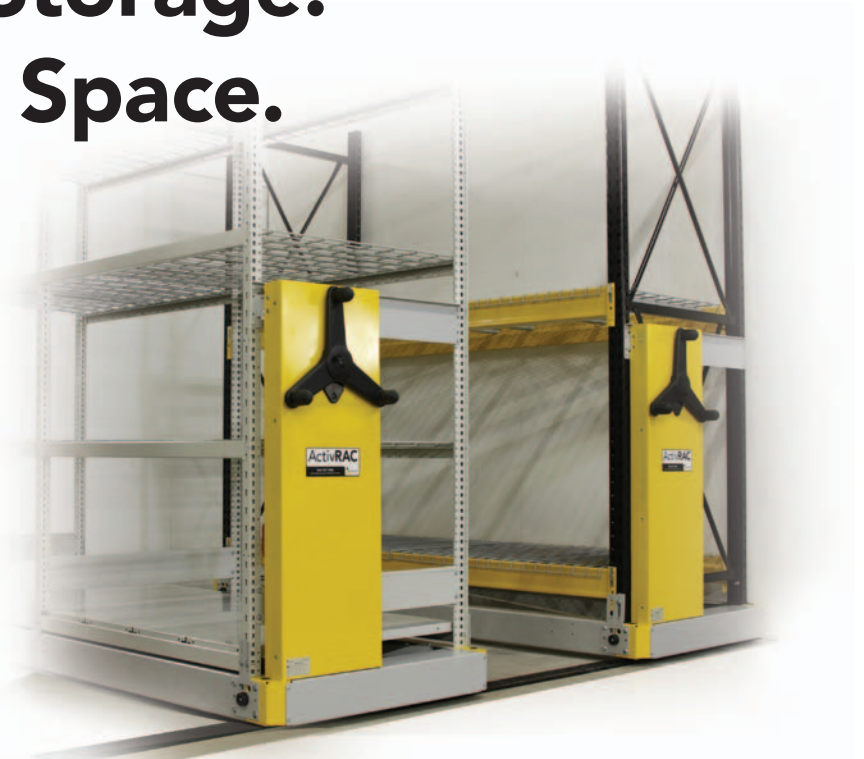
ERGONOMIC DESIGN

Adjustable gear ratios ensure ease of use.



SYSTEM INTEGRATION

Accommodates various racking, shelving, and drawer systems.



The simple fact is everyone needs more space for storage. The ActivRAC 7M mechanical assist mobilized storage system maximizes storage capacity by recovering idle aisle space while providing 100% accessibility with the simple turn of a handle.

The ActivRAC 7M provides true system flexibility to expand, move, or re-configure as well as the ability to travel over flat, but non-level floors, using patent pending designs and technology. Further, the mobilized storage carriages protect your existing storage investment because they have been designed to accommodate everything from 4-post shelving and drawer systems to cantilever shelving and even light to medium-duty pallet racking.

KEY FEATURES

- 7,000 lbs. capacity per carriage/wheel section
- System flexibility – add on or move carriages to other locations as needed
- Uneveled, surface mount or recessed rail options
- Ergonomic handle with adjustable gear ratios to ensure ease of use, regardless of weight
- Designed to work with existing racking, shelving, and drawer systems
- User activated anti-roll safety lock prevents carriage movement, while aisle is in use