



## WATER HARVESTING IS A SMART CHOICE

Climate and population changes are quickly ending the days of cheap, abundant water

Rising costs of municipal water and sewer will speed system ROI

Water harvesting is a sustainable practice that helps protect our natural resources

Water harvesting efforts can earn 10 or more points toward LEED Green Building Certification

Municipalities are increasing mandates to reduce stormwater and reduce potable water consumption

Tax incentives and grants available in many areas can help offset system costs



### POTENTIAL SOURCES

- Rooftop rainwater
- Surface stormwater
- Greywater from showers, sinks, washers
- Cooling condensate
- Steam condensate
- Groundwater ejectors
- Cooling tower "blow down"

The most efficient systems harvest multiple water sources for multiple non-potable uses



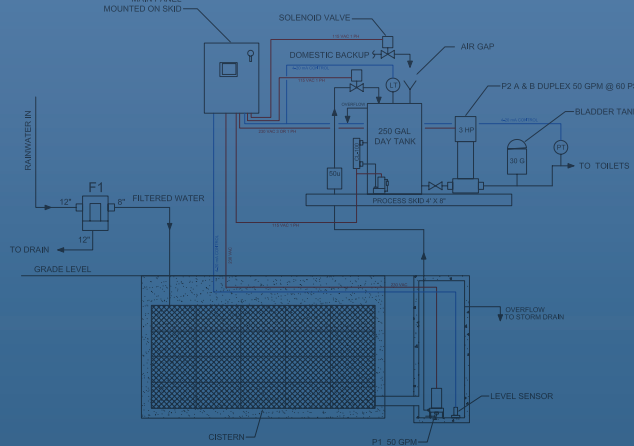
### POTENTIAL USES

- Landscape irrigation
- Toilet flushing
- Cooling tower "make-up"
- Green roof irrigation
- Boiler "make-up"
- Truck washing
- Washing machines

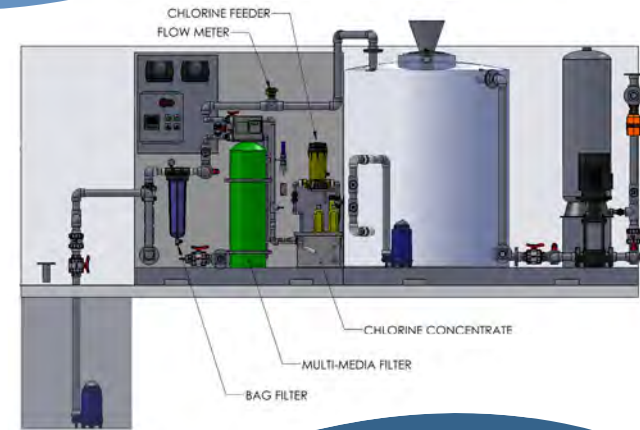
## WAHASO IS THE EXPERIENCED LEADER IN WATER HARVESTING.

We have over 30 years of experience in fluid systems design with the experience and capabilities to deliver sophisticated water harvesting systems for any application.

We support client projects throughout the U.S. and Canada.



wahaso™  
WATER HARVESTING SOLUTIONS



wahaso  
WATER HARVESTING SOLUTIONS

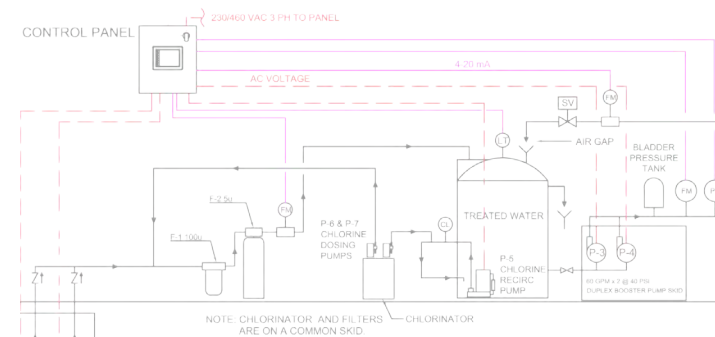
304 South Lincoln Street | Hinsdale, IL 60521  
P 800.580.5350 | E info@wahaso.com

Wahaso.com



© 2012 Wahaso™ Water Harvesting Solutions, Inc.

## RAINWATER & GREYWATER HARVESTING SYSTEMS for Commercial & Institutional Properties



# WAHASO SUPPORTS THE ENTIRE SYSTEM DESIGN & BUILD PROCESS

## SCOPING

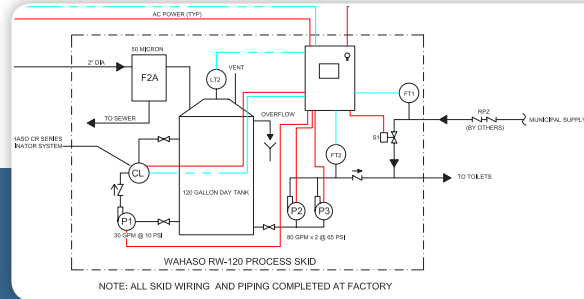


**Scoping** is the crucial first step in any harvesting project. Wahaso's experience and leading edge analytic tools are used to develop a custom system design to meet the unique characteristics of each building or project.

### Scoping Steps:

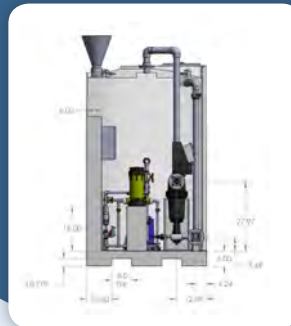
1. Consultation
2. Analysis of Supplies & Demand
3. Cistern Modeling
4. System Concept
5. System Budget

## DESIGN & SPECIFICATIONS



**Design & Engineering.** Our engineers draw on 30 years of practical experience designing water purification systems. Our designs integrate industry-standard components and Wahaso proprietary subcomponents and controls to deliver efficient and reliable systems.

We provide 2D & 3D CAD drawings that can be integrated directly into building specifications.



## FABRICATION



**Fabrication.** Our comprehensive engineered designs are transformed into working systems in our fabrication facility. Components are assembled and connected on skids and pretested before delivery to the job site.

## TRAINING & SERVICE

**Training & Service**  
We include training for the building staff and a one year warranty on the entire system to ensure that it operates as designed.

## INSTALLATION & TESTING

**Installation & Testing**  
Wahaso operations teams work on-site with the installing contractor to make sure a system installs and operates properly.