

SPACES IN HARMONY

Duo-Gard's core purpose is to inspire and enable sustainable communities. We're committed to change the way we think about bike shelters and the people who provide them. Bike shelters and parking are highly visible and are a reflection of your commitment to a more sustainable environment. Designated parking is more orderly for buildings, prevents damage to trees and street furniture and prevents bikes from blocking the sidewalk. Our products serve to encourage alternative transportation while enhancing the appearance of your grounds as well as your image.

STANDARD MODEL OR CUSTOM?

Since 1984 Duo-Gard has investigated, evaluated and integrated global technologies and innovations to ensure the very best for our customers, partners and the environment. We've applied our knowledge and experience to develop a variety of standard bike shelter models including architecturally designed shelters. If you'd like to go in a different direction, we're happy to collaborate with you to create any conceivable size, shape and look you desire.

SHOW YOUR COMMITMENT

- Reduce your carbon footprint
- Support alternative transportation
- Promote exercise & healthy living
- Work toward LEED points
- Protect expensive equipment
- Provide safety & security to cyclists
- Make an architectural statement

BY TEAMING WITH DUO-GARD

- 30 years of shelter innovation
- Open, partially or fully enclosed
- Standard lighting or solar LEDs/PVs
- Custom glazing & framing colors
- Design, engineer, manufacture, install
- Engineer-stamped designs available
- Delivery & installation nationwide



RAISING THE BAR

Functionality, aesthetics and helping you make a design statement are our priorities. We're not afraid to set new standards of performance and accountability. Our bike shelters are engineered for your wind and snow loads. Our polycarbonate panels can provide UV protection, 100% recyclability and can be up to 20% recycled content. The materials we use to construct our shelters are available in a variety of colors and finishes. We also can provide engineer-stamped drawings. Combining all of these features helps you achieve your goals and work toward LEED certification.

ACTIVE, INVOLVED & KNOWLEDGEABLE

At Duo-Gard we consistently educate our employees and customers about new products, commuter and industry trends, bike parking guidelines and anything that relates to our products and affects your planning. We then apply our know-how and education to help you plan and execute your project. We provide project pricing, specifications, CAD drawings and bike parking layouts and capacities upon request.

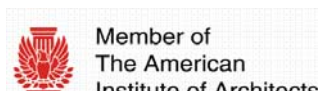
STANDARD SHELTER FEATURES

- Thirteen standard models
- Integrated bike racks on selected models
- Designed to address specific bike parking needs
- Pre-engineered
- Constructed with readily available, standard materials
- Cost effective



FORGE AHEAD

Contact us at 734.207.9700. We'll consider your project parameters and make recommendations based on our years of experience, knowledge of building codes and recommended APBP bike parking guidelines. Let's make your vision a reality!





bike shelter buzz

For complete articles and additional information visit us at www.duo-gard.com.



EDC Magazine 2012 Reader's Choice Award...Combining safety, security, sustainability & aesthetics, custom-engineered & fabricated by Duo-Gard Industries...incorporates card-key entry, custom solar lighting system, special motion detectors, metal mesh walls & a shatterproof polycarbonate roof. Duo-Gard won in the category of Framing, Structural or Insulation Products for the bike shelter installation at Massachusetts Institute of Technology's Maseeh Hall...addresses need for increased security for bikes & their riders.

GreenBuilder™ Defining Green

Green Products - Duo-Gard Bike Shelters & Hot 50 Products - One of 6 Cool Contenders 12/15/10 & 2/11/11...Bike shelters don't have to be boring. Duo-Gard Industries offers a range of fanciful yet functional structures.



Hot Market: Bike Commuters 11/1/10...Half of all Americans believe that automobiles are the main cause of air pollution in their communities...40 percent of those surveyed...said they would commute by bicycle if storage facilities were available. Early this year, Arvidson assigned his architects to come up with standard designs - avant-garde to utilitarian - that could be easily customized. By September, Duo-Gard's bike shelters, had been specified in 30 to 50 large construction projects, to be executed in six months to a year.



Bike Shelters Assist in LEED Certification 10/25/10...Ideally suited for corporate campuses, government organizations and educational institutions, Duo-Gard's bike shelters serve as a cost-effective solution for city planners, landscape architects and specifiers looking to enhance building sustainability and design.



Fully Customizable, Sustainable Bike Shelters 10/10/10...Shelters can be customized to any design scheme, with options for open, attached or fully-enclosed structure and multiple color choices for framing and glazing. Additional options include lean rails, seating, and Duo-Gard 3S Solar Block coating to reduce heat loads.



Product Wire-New & Noteworthy 12/31/10...Installed at schools, mass transit hubs and corporate campuses...Additional options include bike racks, lean rails, seating and a solar block coating to reduce heat loads.



Bike Shelters Make Architectural Statement 9/27/10...designed to complement any architectural style...wide range of options, including custom designs. The shelters are formed from polycarbonate panels, made up of 20% recycled materials, and are 100% recyclable at the end of their product life. They can be fitted with standard outdoor lighting, or solar-powered LEDs.



Construction News Views Interviews Commentaries Downloads and More

The Lowly Bike Rack Rises in Style and Functionality 9/13/10...Made with polycarbonate panels to provide UV protection, the bike shelters protect the bikes from UV

degradation and rain or snow. The bike shelters are helping buildings achieve LEED certification by supporting alternative commuting transportation methods in reducing carbon emissions.



Greenbuild 2010 Sustainable Bike Shelters 11/16/10...Duo-Gard's bike shelters are available in custom and standard options...bike shelters can withstand intense environmental conditions associated with rain or snow.



From My Line of Sight with Mike Arvidson Nov/Dec 2010...Sustainable technology has always been the driving force at Duo-Gard, whether it's in our daylighting systems or our outdoor structures....We expand our product lines, such as new bike shelters, to meet the changing demands of sustainability. We seek out and collaborate with other industry innovators to integrate their sustainable advances into our products to create the best of possibilities.



Form follows function with this state-of-the-art design

ROOF

- Multiwall translucent polycarbonate
- Batten style
- Variety of custom colors available
- Opal, clear, bronze - green or blue based on availability

FRAME

- Heavy gauge steel
- 3-Coat Tnemec system including 2-part epoxy finish, galvanized or stainless steel
- Anchor - surface mounted

OPTIONAL FEATURES

- Standard lighting packages
- Photovoltaic solar lighting packages
- Bike racks

STANDARD SIZES & APBP-BASED RECOMMENDED PARKING CAPACITIES

12' x 17'	8-20 Bikes
12' x 29'	16-36 Bikes
12' x 41'	24-52 Bikes

AVAILABLE UPON REQUEST

- Project pricing
- Specifications
- CAD drawings
- Bike parking layouts

STANDARD SHELTER MODELS

- Designed to address specific bike parking needs
- Pre-engineered
- Constructed with readily available, standard materials
- Cost effective



An inviting three-sided shelter with optional security gates

© Design by Duo-Gard Industries 2010

ROOF

- Multiwall translucent polycarbonate
- Variety of custom colors available
- Opal, clear, bronze - green or blue based on availability

FRAME

- Heavy gauge steel or aluminum
- 3-Coat Tnemec system including 2-part epoxy finish, galvanized or stainless steel
- Optional gates for additional security
- Access options - code, key, card swipe
- Anchor - surface mounted

OPTIONAL FEATURES

- Standard lighting packages
- Photovoltaic solar lighting packages
- Bike racks

STANDARD SIZES* & APBP-BASED RECOMMENDED PARKING CAPACITIES

8' x 12'	8-10 Bikes	8' x 36'	16 Bikes
8' x 24'	16-18 Bikes	8' x 48'	18 Bikes

*Custom sizes available

AVAILABLE UPON REQUEST

- Project pricing
- Specifications
- CAD drawings
- Bike parking layouts

STANDARD SHELTER MODELS

- Designed to address specific bike parking needs
- Pre-engineered
- Constructed with readily available, standard materials
- Cost effective



Sophisticated in its simplicity with a graceful, soaring curve

ROOF

- Multiwall translucent polycarbonate
- Batten style
- Variety of custom colors available
- Opal, clear, bronze - green or blue based on availability

FRAME

- Aluminum or steel tube framing
- Aluminum - anodized, powder coat or Kynar finish
- Steel - 3-Coat Tnemec system including 2-part epoxy finish, galvanized or stainless steel
- Anchor - surface mounted or below grade mounting kits

OPTIONAL FEATURES

- Standard lighting packages
- Photovoltaic solar lighting packages
- Bike racks

STANDARD SIZES* & APBP-BASED RECOMMENDED PARKING CAPACITIES

14' x 19'	24 Bikes w/36" Spacing	32 Bikes w/30" Spacing
14' x 22'	28 Bikes w/36" Spacing	36 Bikes w/30" Spacing
14' x 25'	32 Bikes w/36" Spacing	40 Bikes w/30" Spacing
14' x 31'	40 Bikes w/36" Spacing	48 Bikes w/30" Spacing

*Custom sizes available

AVAILABLE UPON REQUEST

- Project pricing
- Specifications
- CAD drawings
- Bike parking layouts

STANDARD SHELTER MODELS

- Designed to address specific bike parking needs
- Pre-engineered
- Constructed with readily available, standard materials
- Cost effective



Light and modern, an artistic focal point for any streetscape

ROOF

- Multiwall translucent polycarbonate
- Variety of custom colors available
- Opal, clear, bronze - green or blue based on availability

FRAME

- Bike parking built into the design
- 1/2" x 3" Steel construction
- 3-Coat Tnemec system including 2-part epoxy finish, galvanized or stainless steel
- Anchor - surface mounted or below grade mounting kits

OPTIONAL FEATURES

- Standard lighting packages
- Photovoltaic solar lighting packages
- Bike racks

STANDARD SIZES* & APBP-BASED RECOMMENDED PARKING CAPACITIES

9' x 12'	8 Bikes	9' x 21'	14 Bikes	9' x 30'	20 Bikes
9' x 15'	10 Bikes	9' x 24'	16 Bikes	9' x 36'	24 Bikes
9' x 18'	12 Bikes	9' x 27'	18 Bikes		

*Custom sizes available

AVAILABLE UPON REQUEST

- Project pricing
- Specifications
- CAD drawings
- Bike parking layouts

STANDARD SHELTER MODELS

- Designed to address specific bike parking needs
- Pre-engineered
- Constructed with readily available, standard materials
- Cost effective



© Design by Duo-Gard Industries 2003.

Excellent opportunity toward LEED points

ROOF

- Curved standing seam
- Variety of standard colors
- Kynar finish - 25 year warranty
- Multiwall translucent polycarbonate available in opal, clear, bronze - green or blues based on availability

WALLS

- Open, railing or fully enclosed wall panels
- Door/Secure entry available
- Polycarbonate
- Safety glass
- Mesh - stainless steel or aluminum
- Perforated metal

FRAME

- Aluminum construction
- Anodized, powder coat or Kynar finish
- Anchor - surface mounted

OPTIONAL FEATURES

- Standard lighting packages
- Photovoltaic solar lighting packages
- Bike racks

STANDARD SIZES* & APBP-BASED RECOMMENDED PARKING CAPACITIES

10' x 18'	12 Bikes	12' x 18'	12 or 20 Bikes w/hanging racks	16' x 18'	20 Bikes
10' x 24'	16 Bikes	12' x 24'	16 or 26 Bikes w/hanging racks	16' x 28'	28 Bikes
10' x 36'	24 Bikes	12' x 36'	24 or 44 Bikes w/hanging racks	16' x 44'	44 Bikes
10' x 48'	32 Bikes	12' x 48'	32 or 60 Bikes w/hanging racks	16' x 60'	60 Bikes

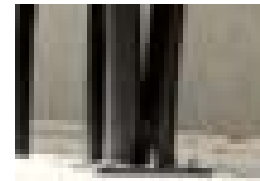
*Custom sizes available

AVAILABLE UPON REQUEST

- Project pricing
- Specifications
- CAD drawings
- Bike parking layouts

STANDARD MODEL BENEFITS

- Designed to address specific bike parking needs
- Pre-engineered
- Constructed with readily available, standard materials
- Cost effective



Its graceful lines echo movement

© Design by Duo-Gard Industries 2009

ROOF

- Multiwall translucent polycarbonate
- Batten Style
- Variety of custom colors available
- Opal, clear, bronze - green or blue based on availability

FRAME

- Smaller footprint ideal for tight areas
- Heavy gauge steel
- 3-Coat Tnemec system including 2-part epoxy finish, galvanized or stainless steel
- Anchor - surface mounted or below grade mounting kits

OPTIONAL FEATURES

- Standard lighting packages
- Photovoltaic solar lighting packages
- Bike racks

STANDARD SIZES* & APBP-BASED RECOMMENDED PARKING CAPACITIES

9' x 8'	6-10 Bikes	9' x 21'	14-20 Bikes	12' 6" x 18'	20 Bikes
9' x 12'	8-12 Bikes	9' x 24'	16-22 Bikes	12' 6" x 36'	40 Bikes
9' x 15'	10-14 Bikes	9' x 27'	18-24 Bikes	12' 6" x 48'	60 Bikes
9' x 18'	12-18 Bikes	9' x 30'	20-26 Bikes		

*Custom sizes available

AVAILABLE UPON REQUEST

- Project pricing
- Specifications
- CAD drawings
- Bike parking layouts

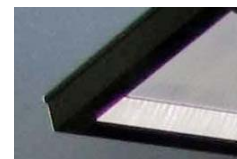
STANDARD SHELTER MODELS

- Designed to address specific bike parking needs
- Pre-engineered
- Constructed with readily available, standard materials
- Cost effective



© Design by Duo-Gard Industries 2010

Sleek and stylish, practical and economical



ROOF

- Multiwall translucent polycarbonate
- Optional metal standing seam, gable style available in a variety of standard colors
- Opal, clear, bronze - green or blue based on availability

FRAME

- Smaller footprint ideal for tight areas
- Aluminum or steel tube framing
- Aluminum - anodized, powder coat or Kynar finish
- Steel - 3-Coat Tnemec system including 2-part epoxy finish, galvanized or stainless steel
- Anchor - surface mounted or below grade mounting kits

OPTIONAL FEATURES

- Standard lighting packages
- Photovoltaic solar lighting packages
- Bike racks

STANDARD SIZES* & APBP-BASED RECOMMENDED PARKING CAPACITIES

9' x 6'	4-8 Bikes	9' x 18'	12-18 Bikes	9' x 30'	20-26 Bikes
9' x 8'	6-10 Bikes	9' x 21'	14-20 Bikes	12' 6" x 18'	20 Bikes
9' x 12'	8-12 Bikes	9' x 24'	16-22 Bikes	12' 6" x 36'	40 Bikes
9' x 15'	10-14 Bikes	9' x 27'	18-24 Bikes	12' 6" x 48'	60 Bikes

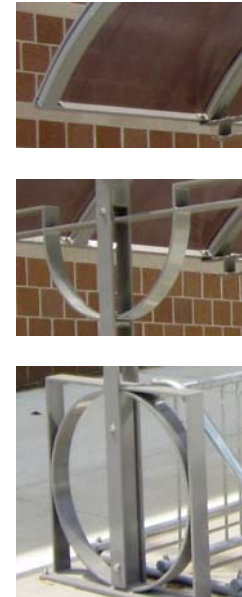
*Custom sizes available

AVAILABLE UPON REQUEST

- Project pricing
- Specifications
- CAD drawings
- Bike parking layouts

STANDARD SHELTER MODELS

- Designed to address specific bike parking needs
- Pre-engineered
- Constructed with readily available, standard materials
- Cost effective



A brilliant design showcasing symmetry and balance

ROOF

- Multiwall translucent polycarbonate
- Variety of custom colors available
- Opal, clear, bronze - green or blue based on availability

FRAME

- Bike parking built into the design
- 1/2" x 3" Steel construction
- 3-Coat Tnemec system including 2-part epoxy finish, galvanized or stainless steel
- Anchor - surface mounted or below grade mounting kits

OPTIONAL FEATURES

- Standard lighting packages
- Photovoltaic solar lighting packages
- Bike racks

STANDARD SIZES* & APBP-BASED RECOMMENDED PARKING CAPACITIES

9' x 12'	8 Bikes	9' x 24'	16 Bikes
9' x 15'	10 Bikes	9' x 27'	18 Bikes
9' x 18'	12 Bikes	9' x 30'	20 Bikes
9' x 21'	14 Bikes	9' x 36'	24 Bikes

*Custom sizes available

AVAILABLE UPON REQUEST

- Project pricing
- Specifications
- CAD drawings
- Bike parking layouts

STANDARD SHELTER MODELS

- Designed to address specific bike parking needs
- Pre-engineered
- Constructed with readily available, standard materials
- Cost effective



Classic style with a contemporary twist

ROOF

- Multiwall translucent polycarbonate
- Batten style
- Variety of custom colors available
- Opal, clear, bronze - green or blue based on availability

FRAME

- Aluminum or steel tube framing
- Aluminum - anodized, powder coat or Kynar finish
- Steel - 3-Coat Themec system including 2-part epoxy finish, galvanized or stainless steel
- Anchor - surface mounted or below grade mounting kits

OPTIONAL FEATURES

- Standard lighting packages
- Photovoltaic solar lighting packages
- Bike racks

STANDARD SIZES* & APBP-BASED RECOMMENDED PARKING CAPACITIES

9' x 12'	8 Bikes	9' x 24'	16 Bikes
9' x 15'	10 Bikes	9' x 27'	18 Bikes
9' x 18'	12 Bikes	9' x 30'	20 Bikes
9' x 21'	14 Bikes	9' x 36'	24 Bikes

*Custom sizes available

AVAILABLE UPON REQUEST

- Project pricing
- Specifications
- CAD drawings
- Bike parking layouts

STANDARD SHELTER MODELS

- Designed to address specific bike parking needs
- Pre-engineered
- Constructed with readily available, standard materials
- Cost effective



Security and safety for bicyclists and their equipment

ROOF

- Gable style
- Variety of standard colors
- Kynar finish - 25 year warranty
- Multiwall translucent polycarbonate available in opal, clear, bronze - green or blue based on availability

WALLS

- Open, railing or fully enclosed wall panels
- Door/Secure entry available
- Polycarbonate
- Safety glass
- Mesh - stainless steel or aluminum
- Perforated metal

FRAME

- Aluminum construction
- Anodized, powder coat or Kynar finish
- Fully enclosed available
- Anchor - surface mounted

OPTIONAL FEATURES

- Standard lighting packages
- Photovoltaic solar lighting packages
- Bike racks

STANDARD SIZES* & APBP-BASED RECOMMENDED PARKING CAPACITIES

10' x 18'	12 Bikes	12' x 18'	12 or 20 Bikes w/hanging racks	16' x 18'	20 Bikes
10' x 24'	16 Bikes	12' x 24'	16 or 26 Bikes w/hanging racks	16' x 28'	28 Bikes
10' x 36'	24 Bikes	12' x 36'	24 or 44 Bikes w/hanging racks	16' x 44'	44 Bikes
10' x 48'	32 Bikes	12' x 48'	32 or 60 Bikes w/hanging racks	16' x 60'	60 Bikes

*Custom sizes available

AVAILABLE UPON REQUEST

- Project pricing
- Specifications
- CAD drawings
- Bike parking layouts

STANDARD MODEL BENEFITS

- Designed to address specific bike parking needs
- Pre-engineered
- Constructed with readily available, standard materials
- Cost effective



Architecturally designed with built-in parking

ROOF

- Multiwall translucent polycarbonate
- Batten style
- Variety of custom colors available
- Opal, clear, bronze - green or blue based on availability

FRAME

- Bike parking built into the design
- Steel pipe construction
- 3-Coat Tnemec system including 2-part epoxy finish, galvanized or stainless steel
- Anchor - surface mounted

OPTIONAL FEATURES

- Standard lighting packages
- Photovoltaic solar lighting packages
- Bike racks

STANDARD SIZES* & APBP-BASED RECOMMENDED PARKING CAPACITIES

10' x 12'	8 Bikes	10' x 24'	16 Bikes
10' x 15'	10 Bikes	10' x 27'	18 Bikes
10' x 18'	12 Bikes	10' x 30'	20 Bikes
10' x 21'	14 Bikes	10' x 36'	24 Bikes

*Custom sizes available

AVAILABLE UPON REQUEST

- Project pricing
- Specifications
- CAD drawings
- Bike parking layouts

STANDARD SHELTER MODELS

- Designed to address specific bike parking needs
- Pre-engineered
- Constructed with readily available, standard materials
- Cost effective



Classic and easily customizable

ROOF

- Metal standing seam, gable style
- Variety of standard colors
- Kynar finish - 25 year warranty
- Multiwall translucent polycarbonate available in opal, clear, bronze - green or blue based on availability

WALLS

- Open, railing or fully enclosed wall panels
- Door/Secure entry available
- Polycarbonate
- Safety glass
- Mesh - stainless steel or aluminum
- Perforated metal

FRAME

- Aluminum construction
- Anodized, powder coat or Kynar finish
- Anchor - surface mounted

OPTIONAL FEATURES

- Standard lighting packages
- Photovoltaic solar lighting packages
- Bike racks

STANDARD SIZES* & APBP-BASED RECOMMENDED PARKING CAPACITIES

9' x 18'	10 Bikes	12' x 18'	12 or 20 Bikes w/Hanging Racks	16' x 18'	20 Bikes
9' x 24'	14 Bikes	12' x 24'	16 or 28 Bikes w/Hanging Racks	16' x 24'	28 Bikes
9' x 36'	22 Bikes	12' x 36'	24 or 44 Bikes w/Hanging Racks	16' x 36'	44 Bikes
9' x 48'	30 Bikes	12' x 48'	32 or 60 Bikes w/Hanging Racks	16' x 48'	60 Bikes

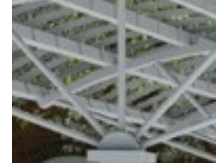
*Custom sizes available

AVAILABLE UPON REQUEST

- Project pricing
- Specifications
- CAD drawings
- Bike parking layouts

STANDARD MODEL BENEFITS

- Designed to address specific bike parking needs
- Pre-engineered
- Constructed with readily available, standard materials
- Cost effective



Embodies the lines of nature

ROOF

- Multiwall translucent polycarbonate
- Variety of custom colors available
- Opal, clear, bronze - green or blue based on availability

FRAME

- Heavy gauge steel
- 3-Coat Tnemec system including 2 part epoxy finish, galvanized or stainless steel
- Anchor - surface mounted or below grade mounting kits

OPTIONAL FEATURES

- Standard lighting packages
- Photovoltaic solar lighting packages
- Bike racks

STANDARD SIZES* & APBP-BASED RECOMMENDED PARKING CAPACITIES

9' x 6'	4-8 Bikes	9' x 18'	12-18 Bikes	9' x 30'	20-26 Bikes
9' x 8'	6-10 Bikes	9' x 21'	14-20 Bikes	12' 6" x 18'	20 Bikes
9' x 12'	8-12 Bikes	9' x 24'	16-22 Bikes	12' 6" x 36'	40 Bikes
9' x 15'	10-14 Bikes	9' x 27'	18-24 Bikes	12' 6" x 48'	60 Bikes

*Custom sizes available

AVAILABLE UPON REQUEST

- Project pricing
- Specifications
- CAD drawings
- Bike parking layouts

STANDARD SHELTER MODELS

- Designed to address specific bike parking needs
- Pre-engineered
- Constructed with readily available, standard materials
- Cost effective