



One of the most prominent features of any business, government, or university facility are parking lots and more often a point of concern for personnel, visitors and property safety. They are challenging spaces to secure because they differ greatly in size, shape, geographic and climate make-up, location and risk profile. Despite their diversity, parking lot applications share similar security and safety concerns.

- » Inadequate Lighting
- » Lower electricity consumption and billing
- » Insufficient surveillance
- » Absence of emergency communication
- » Lack of response when crime occurs

TOTUS Security Platforms™ help secure a variety of parking lot applications, while providing a multi-layered approach to security and Active Deterrence™ in single, fully integrated solution, increasing safety, customer attendance and business profitability.

TOTUS Security Platforms™ extend the presence of security personnel by engaging individuals with audio messages and visual warnings. Optimized lighting, superior video surveillance, real-time emergency communications, and quick response are the first steps in enhancing parking lot safety and deterring crime. Energy efficiency and pollution-sensitive technology encourages long term economic business growth and healthy environment.

The Benefits of TOTUS Technology:

- » Superior Night-Time Color Rendition
- » 60,000 to 100,000 – Hour Life Cycle
- » Continuous 360° Field of View and Recording
- » Two-Way VoIP Audio Communication
- » Analytics-Triggered Lighting Control and Audio
- » Edge Based Multi-Media Storage
- » Active Deterrence™ via Event Action Processing
- » Embedded PoE Switch and External Device Mounting
- » Integrates With and Extends Existing Surveillance to Unprotected Areas
- » Rapid Deployment and Low Total Cost of Ownership

“80 percent of criminal acts at shopping centers, strip malls and business offices occur in parking lots”

Source: Parking Today Publication



TOTUS LED Technology:

- » CRI 83.3 (Sunlight= 100CRI and Department of Defense Min. CRI Requirement is 80)
- » 5000K Correlated Color Temperature

TOTUS APPLICATIONS

High Efficiency Lighting

A well-lit parking area makes it difficult for would-be criminals to lurk undetected, and offers greater security. Lighting in parking areas is not only important for making the people feel more secure in the area, but also helpful for making surveillance results more valuable.

TOTUS outdoor lighting based security platforms' LED technology is optimized for video surveillance and provide up to 70% energy saving versus legacy streetlights. They have a life cycle of up to 100,000 hours with less than 5% loss in brightness, so it's incredibly cost-effective and virtually maintenance-free.

Embedded lighting control capability can automatically vary illumination levels to save even more energy based on natural light or activity levels, or to communicate awareness while deterring crime and creating a more secure environment. The high performance lights provide uniform light intensity on the area, resulting in superior night-time color rendition for accurate forensic video recording identifiers such as color of a car or piece of clothing.

Video Surveillance

Integrated 360° high definition multi-megapixel IP camera with on-board motion or event-triggered digital recording captures activity on time stamped video. Internal controls respond to detected motion with selected system actions, such as strobing lights, activating audio broadcasts, and sending video or images to security officers.

Emergency Communication

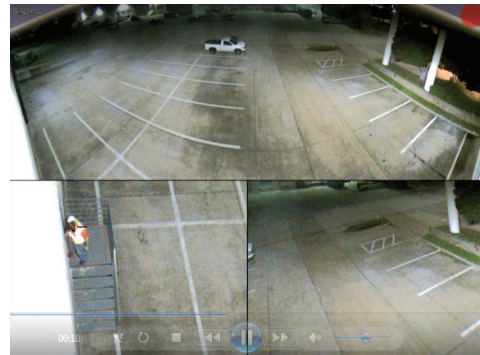
In case of danger or emergency, patron can press an emergency/panic button and security surveillance cameras will alert patrols and central monitoring stations to verify and respond to the incident. A patron may also push a panic button that will cause the surveillance platform's light to flash or strobe drawing attention to the incident, discouraging criminal activity. Two-way audio communications with patrons is supported with an integrated or external microphone and speaker.

Real-Time Response

For complete incident awareness, the video streams along with audio can be sent to roaming patrols and central monitoring stations to verify, respond and prevent incidents in real-time. Central monitoring stations can share videos and images from incidents by forwarding the files via email, or uploading the files via FTP server. Automated notifications can be sent via email and pre-recorded phone messages.

Wireless Connection

TOTUS Security Platforms™ flexible design allows wireless connection and integration with specialty cameras, wireless radios with sensors mounted on a din-rail, on top of the fuselage and powered with the use of two embedded PoE ports.

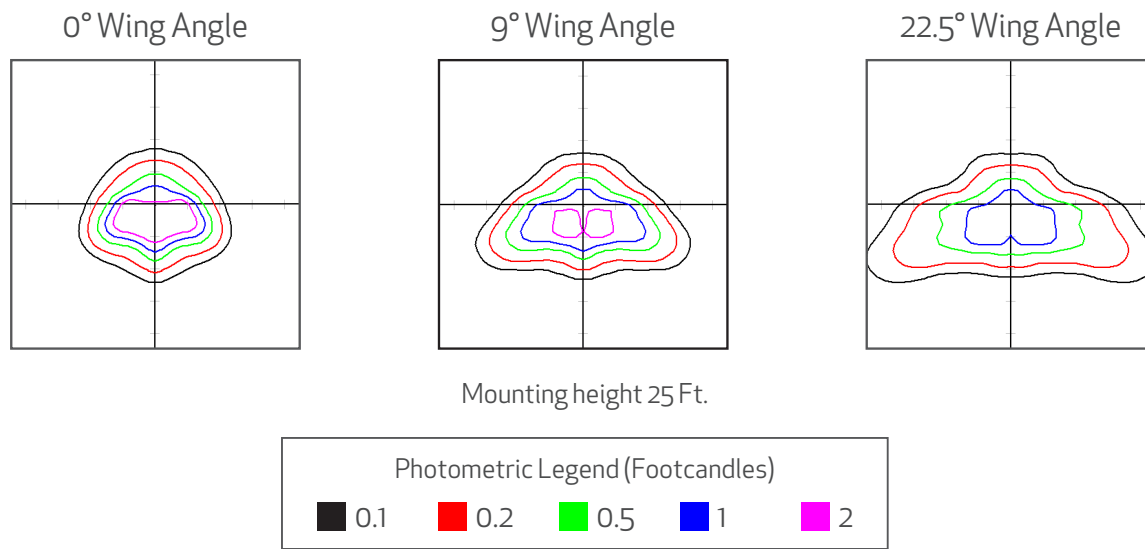


Parking Lot Application Model:

This parking lot application example is utilizing two TSP-150 watt Surveillance Platforms and thirteen TLP-150 watt Smart Lighting Platforms to cover 50,000 feet square area, providing LED lighting for true color viewing at night, with 360 degree megapixel IP surveillance, multi-day media storage, and secure wireless communication. Using Wireless Lighting Controller radios, surveillance platforms control lighting platforms, triggering light to flash or strobe at any or all locations, drawing attention to desired area. TOTUS Security Platforms are installed twenty five feet high and distance between the poles varies anywhere between 57, 88 and 92 feet. The primary coverage radius of 360 degree hemispheric camera is 96 feet with visual radius in excess of 190 feet.



TOTUS Security Platforms™ 150 Watt LED Photometric Data



TOTUS Surveillance Platforms™ Camera Coverage

