



Introducing K-12 Solutions for:

- Mobile Devices
- Mobile Peripherals
- Mobile Device Management (MDM)
- Configuration Services
- Learning Management System (LMS)
- Collaboration Software
- Content Filtering
- Curriculum
- Wireless Infrastructure
- Leasing

www.troxell1to1.com







A photograph of three young women sitting at a desk, smiling and looking at a laptop screen. The woman on the left is wearing a yellow shirt, the woman in the middle is wearing a red and white striped shirt, and the woman on the right is wearing a blue shirt. They appear to be in a classroom or study environment. A blue text box is overlaid on the bottom left of the image.

Troxell's 1:1 Learning Suite

*has the full 1:1 solution at the right price,
for every element of mobile learning. As your
district innovates with mobile learning,
Troxell can be an invaluable partner.*



Go Mobile with Troxell. Solutions for every element.

Mobile Devices  <ul style="list-style-type: none"> • Google Chromebook (Acer, HP, Lenovo, Samsung) • Samsung Galaxy Tablets • Kuno Tablets 	Mobile Peripherals  <ul style="list-style-type: none"> • Anthro • AVer • Balt • Bretford • Califone • Crestron • Da-Lite • Datamation • Gumdrop • MaxCases • Rugged • Spectrum • SMK Link • Hamilton / Buhl
Configuration Services  <ul style="list-style-type: none"> • Troxell Partners 	Wireless Infrastructure  <ul style="list-style-type: none"> • Ruckus
Collaboration Software  <ul style="list-style-type: none"> • DisplayNote • Hapara 	Leasing  <ul style="list-style-type: none"> • Troxell Partners
Content Filtering  <ul style="list-style-type: none"> • Lightspeed Systems 	Curriculum  <ul style="list-style-type: none"> • Google Apps for EDU
MDM (Mobile Device Management)  <ul style="list-style-type: none"> • Google Management Console • Lightspeed Systems • Curriculum Loft • Samsung School 	
LMS (Learning Management Systems)  <ul style="list-style-type: none"> • Lightspeed Systems • Curriculum Loft • Samsung School 	

Many devices. Any platform. Any curriculum. One reseller.

Innovate Your 1 to 1 Solution Faster with Troxell

Troxell's 1:1 Learning Suite has the full 1:1 solution at the right price, for every element of mobile learning. As your district innovates with mobile learning, Troxell can be an invaluable partner.

Our full 1:1 product offering coupled with our **65+** field sales account managers nationwide provides you with outstanding **K12** experience, trust and low pricing.

Troxell's offering includes the industry leaders:

Samsung Google Chromebooks, Lightspeed Systems for LMS, Google Chrome Management Console, AVer and Balt for mobile peripherals and trusted leasing and configuration services.

Troxell is the only fieldsales-backed, nationwide reseller for Lightspeed Systems. A key advantage of partnering with Troxell is your local field sales account manager. No other company can provide the kind of 1:1 support we do locally.



Another key advantage to Troxell is instant access: all of these branded, proven solutions are under one roof and one point of contact.

Because of Troxell's size, we offer you the best price options for your mobile learning solution. Whether you buy, lease, or bundle, we would like you to consult Troxell first.

It is difficult to implement one element of mobile learning without all the other elements. The full picture of 1 to 1 requires all the elements working together, and that takes planning and the right reseller. This is true whether you already have a partial deployment or you are just getting started.





Troxell can help you innovate faster.

Questions for Every K12 District:

- 1 Are you prepared for the potential impact on the district's wireless network?
- 2 How do you intend to manage the devices across the district?
- 3 Have you considered a mobile device management solution?
- 4 Have you chosen curriculum and content already?
- 5 Do you use or plan to use Google Apps for Education?
- 6 Are you considering a BYOD model?
- 7 Does the district use a web-based learning model?
- 8 Is there a preferred learning management system (LMS)?
- 9 How do you intend to fund a 1:1 implementation? Phases? When?
- 10 Is there a timeline for your 1:1 implementation?

Our 1:1 Learning Suite

- Mobile Devices
- Mobile Device Management (MDM)
- Mobile Peripherals
- Learning Management Systems (LMS)
- Content Filtering
- Configuration Services
- Collaboration Software
- Curriculum + Content
- Wireless Network Infrastructure
- Leasing

48 MILLION STUDENTS IN K12

+ 2,000 CONTENT PROVIDERS

+ MANY DEVICES

+ MANY 1:1 SOLUTIONS

ARE YOU READY?

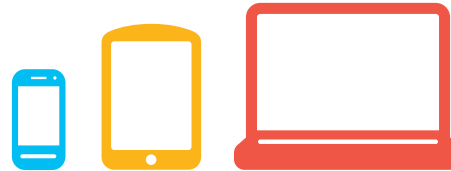


TROXELL CAN HELP NOW.

Troxell is Well Positioned to Meet and Exceed Your Technology Needs in Four Areas

It's clear that the future of **K12** learning leans to one to one. BYOD and 1:1 strategies are part of every discussion in every school district.

Looking for answers about the best solutions? Look no further than 1:1 Learning Suite. Call your Troxell Account Executive and get started today. **Tel. 800-578-8858**



Mobile Devices

- Google Chromebooks (Acer, HP, Lenovo, Samsung)
- Samsung Galaxy Tablets
- Kuno Tablets

Mobile Device Management

- Lightspeed Systems
- Google Management Console for Chromebooks
- Curriculum Loft
- Samsung School

Mobile Peripherals & Accessories

- Anthro
- AVer
- Balt
- Bretford
- Califone
- Crestron
- Da-Lite
- Datamation
- Gumdrop
- Hamilton / Buhl
- Max Cases
- Rugged
- SMK Link
- Spectrum Furniture

Learning Management Systems

- Lightspeed Systems
- Curriculum Loft
- Samsung School

48
MILLION STUDENTS
IN K12

2,000
CONTENT PROVIDERS

65%
OF SCHOOLS HAVE AN
iPad DEPLOYMENT



Samsung
GALAXY



KUNO™





Mobile learning is here—faster than ever.

Buy, bundle and lease with Troxell

Industry articles show that most districts will implement some type of mobile learning platform in the next five years. The core elements to mobile learning are the curriculum and the device.

Curriculum is the key factor in choosing a device. Cost is another factor. Curriculum, budget and estimated student improvements are likely in your decision rubric. The curriculum decisions you make will shape student learning and success in your district for years to come.

No matter which devices you choose, Troxell can be an invaluable partner and supplier to you. Troxell offers low pricing on many mobile devices and we can offer you bundle options for mobile device management and peripherals, as well as configuration services.

There are 30,000 Google Apps for EDU

- 2,500 schools have deployed Google Chromebooks
- 3,000 districts are using *Lightspeed Systems* to manage devices
- More than 65% of school districts have a test deployment of iPads

Product Device Comparison

Chromebook

- Chromebook runs web browser applications in a traditional laptop form, with a keyboard.
- Wi-fi- enabled. Some models have built-in cellular connectivity for 3G.
- Apps available through Google Apps for EDU.
- Device management through Google Management Console.
- May be better suited for heavy data / typing due to real keyboard.

iPad

- iPad relies on a touch screen & downloaded apps.
- Wi-fi enabled, connects to 3G & 4G. Built-in wireless cellular connectivity available.
- Apps available only through iTunes.
- Open to 3rd party software for device management.
- Changes workflow from typing to using photos & apps. Back-facing camera a plus.
- Troxell fully supports iPad implementations.

Go mobile. Be mobile. With the help of Troxell.

Troxell provides affordable pricing on 1:1 devices. Our top choices are the Samsung Chromebook and Samsung Galaxy Tablet. State and local contracts make buying Chromebooks easy and even more affordable; check with your Troxell Account Executive to find out about existing or new contracts for mobile devices.

Troxell's most recent Chromebook contract award is the Ed Data Contract in New Jersey. More contracts will be announced.

For Chromebook, choose from Samsung, Acer, Lenovo or HP.

Samsung Galaxy Tablets are gaining popularity in Education as well. Troxell is proud to provide the latest Galaxy Tablets to you. Please contact your sales Account Executive for immediate pricing. Troxell also supplies Kuno Tablets for Kuno integrations.

Leasing of devices is a great solution for meeting 1:1 goals.

Google Chromebooks may be the best solution for your district when you consider budget constraints and PARCC testing requirements. PARCC is more prevalent in the West right now, with 24 states in the consortium; online testing will come nationwide soon and require updating of technology often, possibly every three years.

Troxell can provide you with leasing information and pricing on Samsung and Acer Chromebooks. Along with leasing, we can provide instant Bundle Pricing for an LMS and mobile device management solutions from Lightspeed Systems and Google Management Console. Call your Account Executive now for this amazing solution.

Most popular Chromebook - 16 GB

For \$249 all day long.
Wi-Fi enabled.



Chromebook #2 - 16 GB

Samsung Series 3 Chromebook.
Includes 3G.



Samsung Galaxy Tablet

Samsung Galaxy Tablet 10.1" with
Camera 16GB. Wi-fi only, 1.3 pounds.
Light and portable, the Galaxy Tab 2
is the ideal mobile device.





There are already **15 million** Google Apps
for Education Users in **146** Countries

Manage Chromebooks (with ease and less staff) *using Google Management Console*

Most school districts will most likely not standardize on a single device. So whether you choose a mix of iPads, Chromebooks or other mobile devices, you will most likely need to consider more than one device management solution.

Troxell offers you the best names in the business, Lightspeed Systems for complete device management and LMS, and Google Management Console for Google Chromebooks. Contact your local account executive or call our corporate offices to set up a 1:1 consultation and immediate solution pricing. **Troxell is the only nationwide fieldsales-backed reseller for Lightspeed Systems.**



Lightspeed Systems is the K12 Leader — over 3,000 district deployments!

Choose Lightspeed Systems for LMS (and MDM, too)

A Learning Management System (LMS) is a crucial software application for the administration, documentation, tracking, reporting and delivery of e-learning education courses and training programs for students. An LMS can range from systems for managing education records to software for distributing online courses over the Internet with online collaboration features.

Lightspeed Systems has helped thousands of schools around the world protect and engage more than 10 million students.

 **10 MILLION STUDENTS**



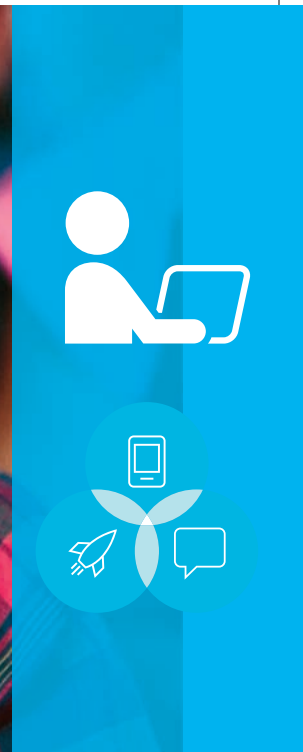
**Lightspeed
Systems**

**my
Big Campus**

Put simply, LMS is what teachers & students use on a daily basis for:

- Learning and lesson plans
- Communication to / from teacher and student
- Testing
- Common core requirements
- Saving files in the Cloud
- Communication with parents
- Distribution of high school & college courses on the Internet
- Remote for alternative schooling





Troxell is the largest, fieldsales-backed reseller for Lightspeed Systems.

We invite you to call today.

Troxell can provide pricing on a full LMS or select rocket appliances from Lightspeed Systems.

What is your district's timing? Let us know, we can help.

You can implement a full solution from Lightspeed Systems or choose select Rockets for learning, lesson plans, testing and more. Find out more about products from Lightspeed Systems with an in-person demonstration or a personalized Lightspeed Systems webinar for your district. We can bring our Lightspeed Systems representatives to you.

Contact your Troxell Account Executive to make an appointment or call Troxell corporate offices at [📞 800-352-7912 ext. 4000](tel:800-352-7912) to set up a convenient meeting date and time.

New! Samsung School

Talk to Troxell about how to get connected with the new truly interactive "Samsung School."

Samsung School is an interactive management and learning solution utilizing the *Samsung Galaxy Note 10.1*, the *S Pen*, and interactive whiteboard. Samsung School is built around three central components to assist teachers: Interactive Management, Learning Management and Student information.

- **Contact Troxell for more information.**

More devices = More peripherals. Start today, get the latest and greatest.

Mobile devices necessitate more charging & sync carts

The mobile peripherals and accessories arena is booming with new products and vendors for Education. Charging carts, charge/sync carts, and mobile learning furniture are leading the way in new technology and interest from **K12** school systems.

Mobile peripherals & accessories you need now

Charging Carts + Sync Carts

- Anthro
- AVer
- Balt / Mooreco
- Bretford
- Da-Lite
- Datamation
- Spectrum Furniture



Cases + Stands + Docks

- Gumdrop
- MaxCases
- Rugged
- Security Resources
- SMK Link



Headphones + Chargers

- Hamilton / Buhl
- Califone



Check out our growing offering of 1:1 mobile peripherals & accessories at: www.eTroxell.com





Configuration Services Make Deployments Easier.

Troxell makes it 100% Ready to Use Out of the Box.

We Supply your Device. Add your School Logo & Colors, as well as Asset-Tag it.

Troxell is adept at providing solid third-party configuration services, allowing for easier out of the box deployment without taxing current I.T. staff.

Troxell can provide a quote on the following Configuration Services with your device order such as:

- Unboxing
- Activation
- Asset tagging
- Engraving with district or school name or logo
- Pre-loading of your chosen software
- Placement of devices into cases or stands
- Pre-configuration of your preferred settings
- Enrollment options

Wireless Infrastructure—have you thought about how your 1:1 needs will impact your wireless network?

The wave of more mobile learning puts even more pressure on your wireless network infrastructure.

Are you ready? Have you thought about the potential impact of adding more devices onto your network? Troxell's partner for wireless infrastructure is Ruckus. For more information, please contact Bob Berry at the corporate office [✉ bob.berry@trox.com](mailto:bob.berry@trox.com) or [📞 800-352-7912, ext. 4000](tel:800-352-7912)



Samsung
GALAXY



KUNO™



Troxell we accelerate 1:1





Innovate your 1:1 Solution faster with Troxell.

With our 1:1 Learning Suite of products, we have brought you leading branded solutions for all the elements of a 1 to 1 plan, under one roof. This makes research, demonstrations, consultation and quoting your 1:1 Solution fast and convenient for your District. With one phone call to your Troxell account executive, we can connect you to all the exciting products our 1 to 1 partners provide.

Because of our expertise and experience in K12, you can trust that Troxell is bringing you the right kinds of solutions that integrate seamlessly and achieve your 1 to 1 learning goals.



www.troxell1to1.com

www.etroxell.com

Tel. 800-352-7912 ext. 4000

Email. gomobile@trox.com

4830 S 38th St. Phoenix, AZ 85040

© Copyright 2013 TroxeLL Communications. All trademarks belong to their respective owners.

Tel. 602-437-7240 • Fax. 602-437-7265 • 800-578-8858