

# The Worthington

3,193 Living Area 5 Bedroom / 3 Bath

*These drawings are for illustration purposes only. All dimensions are approximate and elevations may reflect optional features and colors.*



## Features

- Grand Master Suite with His & Her Walk-In Closets
- Garden Tub with Separate Shower and Water Closet Master Bath
- Four Large Bedrooms Upstairs & Separate Bedroom and Full Bath Downstairs
- Large Eat-In Kitchen that Opens to Dining & Family Room
- Private Owners Entrance with Drop Zone
- Spacious Utility Room Conveniently Located on First Floor
- Two Car Garage

**\*First Floor Master Bedroom Option Available**



*The Spruce Elevation*



*The Poplar Elevation*



*The Oak Elevation*



*The Maple Elevation*

*Visit our website or call us today to speak with a sales person.  
Toll Free: 1-877-358-9199 [www.sedgewickhomes.com](http://www.sedgewickhomes.com)*

# The Worthington

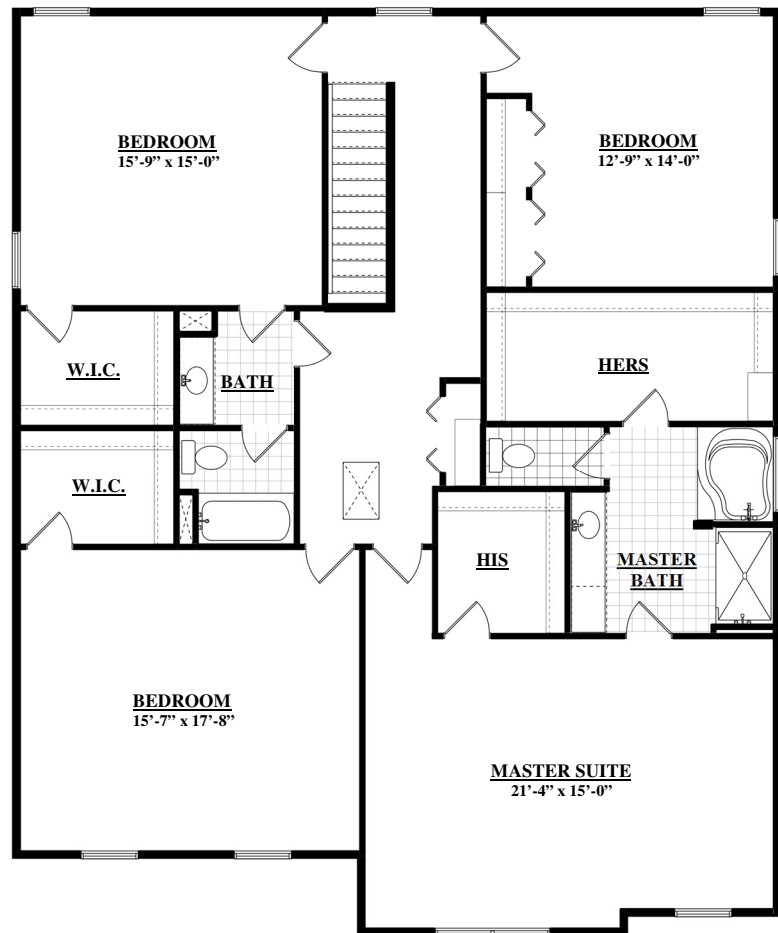
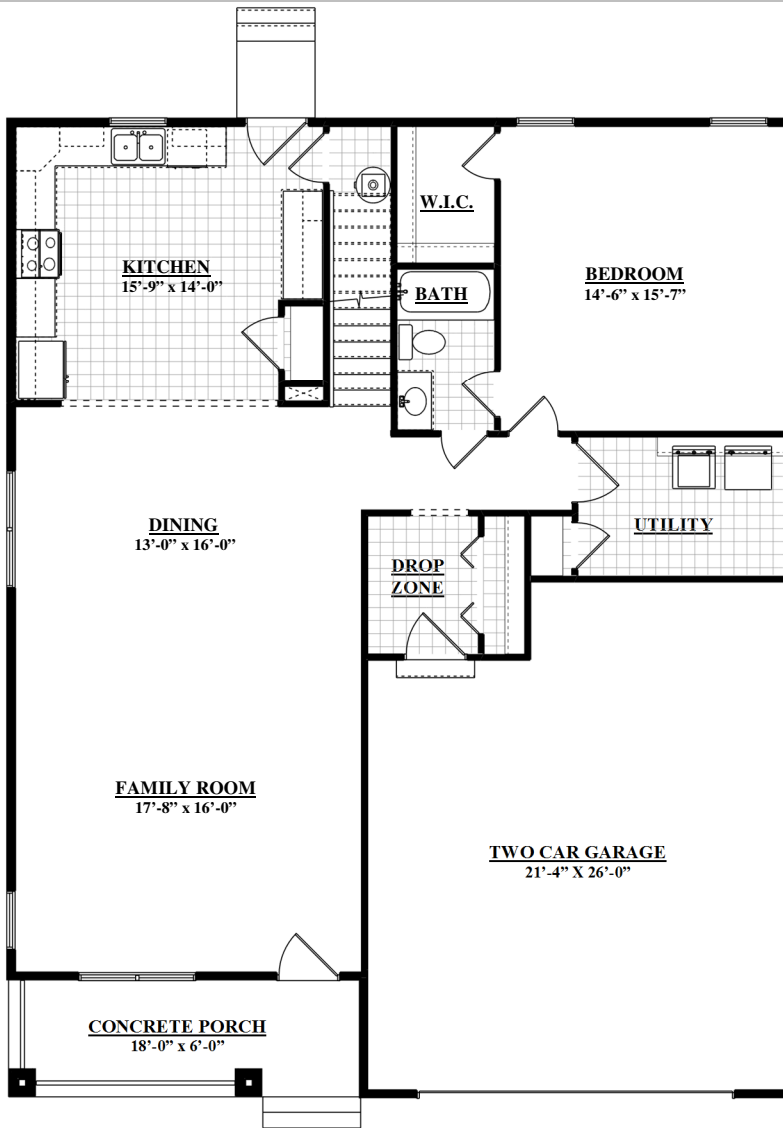
3,193 Living Area 5 Bedroom / 3 Bath



## Features

- Grand Master Suite with His & Her Walk-In Closets
- Garden Tub with Separate Shower and Water Closet in Master Bath
- Four Large Bedrooms Upstairs & Separate Bedroom and Full Bath Downstairs
- Large Eat-In Kitchen that Opens to Dining & Family Room
- Private Owners Entrance with Drop Zone
- Spacious Utility Room Conveniently Located on First Floor
- Two Car Garage

**\*First Floor Master Bedroom Option Available**



## The Maple Elevation Floor Plan

Please see Sales Agent for Plan Differences.

These drawings are for illustration purposes only. All dimensions are approximate and elevations may reflect optional features and colors.



Visit our website or call us today to speak with a sales person.

Toll Free: 1-877-358-9199 [www.sedgewickhomes.com](http://www.sedgewickhomes.com)