



**BOMAG**  
FAYAT GROUP

## Tandem Vibratory Rollers **BW141AD-5, BW151AD-5**



### KEY FEATURES

- Compact articulated design
- Kubota Tier 4 Final engine
- ECOMODE
- Crab steer feature
- Easy sightlines to drum edges
- Swivel seat
- Filtered water spray system
- Spring loaded drum scrapers



# BW141AD-5, BW151AD-5



## ■ *An Innovative New Design...*

### ■ Applications:

- Asphalt and base compaction
- Highway maintenance and repair
- Municipal and county road construction
- Commercial jobsite compaction
- Parking lot construction



Machines may be shown with options.

Clear monitoring system and Smart drive steering wheel

*Featuring...*



*The optional cab and edge roller features will increase machine versatility for all weather conditions*

*High drum frequency provides maximum productivity and smoothness*

- BOMAG's NEW -5 Series Heavy Tandem rollers offer several new benefits to the asphalt compaction industry
  - Operators will appreciate the updated operators platform with its spacious area, easy reach controls, and safe sightlines
  - Service technicians will be more efficient with daily checks and maintenance items
  - QA/QC personnel and site foremen will realize consistent compaction results and uniformity on the mat
  - Owners will achieve efficient utilization, uptime and return on their equipment investment



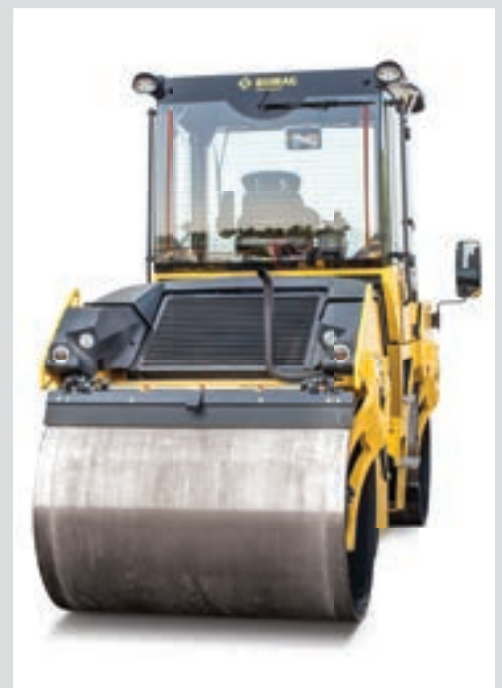
*Triple filtered water spray system with backup reserve pump and easy clean nozzles*



*Tier 4 Final Kubota diesel engine*



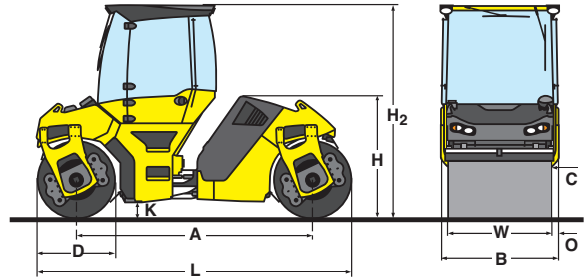
*Ergonomic travel lever control*



*Compact footprint allows easy manoeuvrability in municipal areas*

# Technical Specifications

## BW141AD-5, BW151AD-5



### Shipping dimensions

in cubic feet (m <sup>3</sup> )	without/with ROPS	
BW141AD-5	568.8 (16.1)	775.7 (22)
BW151AD-5	630.4 (17.9)	859.6 (24.4)

### Standard Equipment

- 2 amplitudes / 2 frequencies
- Crab steer right / left 6.7" (170mm)
- Automatic vibration operation
- Individual drum vibration control
- Driver's seat, swivel
  - laterally slidable with steering wheel
- Travel lever with integrated switches
  - Vibration
  - Crab steer
  - Warning horn
- On-board Monitoring
  - Engine speed
  - Speedometer
  - Fuel consumption
  - Engine temperature
- V-belt protection
- Pressure water system with 2 pumps
- 4 integrated working lights
- Indicator and hazard lights
- ROPS / FOPS with seat belt
- Back-up alarm
- Master battery disconnect switch
- Storage compartments

### Optional Equipment

- ROPS cab with heat
- ROPS cab w/heat and air conditioning
- BOMAG TELEMATIC
- Asphalt mat temperature display
- Drum edge lighting
- Edge cutter
- Additional weight for BW151AD model only - 1323 lb (600kg)
- Rotary beacon
- Radio - available only with cab option
- Environmentally compliant hydraulic oil
- Special paint

### Dimensions in inches (mm)

	A	B	C	D	H	H <sub>2</sub>	K	L	O	W
BW141AD-5	129.9 (3300)	65.5 (1664)	28.7 (730)	43.3 (1100)	86.6 (2200)	118.1 (3000)	9.8 (250)	173.2 (4400)	3.2 (82)	59.1 (1500)
BW151AD-5	129.9 (3300)	72.6 (1844)	28.7 (730)	43.3 (1100)	86.6 (2200)	118.1 (3000)	9.8 (250)	173.2 (4400)	3.2 (82)	66.1 (1680)

### Technical data

Technical data	BOMAG BW141AD-5	BOMAG BW151 AD-5
<b>Weights</b>		
Operating weight with ROPS .....	14770 (6700) lbs (kg)	16315 (7400) lbs (kg)
Axle load (front) .....	7620 (3456) lbs (kg)	8372 (3798) lbs (kg)
Axle load (rear) .....	7150 (3243) lbs (kg)	7943 (3603) lbs (kg)
Average static linear load (front) .....	128.9 (23) pli (kg/cm)	126.6 (22.6) pli (kg/cm)
Average static linear load (rear) .....	121 (21.6) pli (kg/cm)	120.2 (21.4) pli (kg/cm)
Operating weight with CAB .....	15212 (6900) lbs (kg)	16755 (7600) lbs (kg)
<b>Driving Characteristics (depending on site conditions)</b>		
Max travel speed .....	7.5 (12) mph (kmph)	7.5 (12) mph (kmph)
Max. gradeability (without / with vibration) .....	40/30 %	40/30 %
<b>Drive</b>		
Engine manufacturer .....	Kubota	Kubota
Type .....	V3307 CR-T	V3307 CR-T
Tier Compliance .....	Tier 4 Final	Tier 4 Final
Cooling .....	Water	Water
Number of cylinders .....	4	4
Performance ISO 14396 .....	73.2 (55.4) hp (kW)	73.2 (55.4) hp (kW)
Speed .....	2400 rpm	2400 rpm
Electric Equipment .....	12 V	12 V
Drive system .....	hydrostatic	hydrostatic
<b>Brakes</b>		
Service brake .....	hydrostatic	hydrostatic
Parking brake .....	SAHR	SAHR
<b>Steering</b>		
Steering system .....	oscillating, articulating	oscillating, articulating
Lateral displacement right/left (crab steer) .....	6.7 (170) in (mm)	6.7 (170) in (mm)
Track Radius, inner .....	176.4 (4480) in (mm)	172.8 (4390) in (mm)
<b>Vibratory system</b>		
Vibrating drum .....	front + rear	front + rear
Drive system .....	hydrostatic	hydrostatic
Frequency .....	3000/4200 (50/70) vpm (Hz)	3000/4200 (50/70) vpm (Hz)
Amplitude .....	0.026/0.010 (0.67/0.25) in (mm)	0.025/0.009 (0.63/0.24) in (mm)
Centrifugal force .....	17760/13039 (79/58) lbs (kN)	17760/13039 (79/58) lbs (kN)
<b>Water Spray System</b>		
Type of system .....	pressurized	pressurized
Back-up system .....	2nd pump	2nd pump
<b>Capacities</b>		
Fuel .....	33 (125) gal (l)	33 (125) gal (l)
Water .....	158.5 (600) gal (l)	158.5 (600) gal (l)

Technical modifications reserved. Machines may be shown with options.

B859H-3593 3M1013TTPPG