

Description

The ADPRO® LoiterTrace™ application provides high performance loiter detection using video analytics specifically designed for indoor and outdoor operation. LoiterTrace is an image analysis tool able to detect humans remaining too long in an indoor scene. The analytics uses advanced algorithms to maximize target detection and tracking. It is able to detect loitering persons even if they remain static for a long time (like when the person is sleeping). With simple “region of interest” configuration, LoiterTrace detection is suited for office lobbies, entrance halls of public buildings, etc. Supporting all 16 channels on the ADPRO FastTrace™ 2X or up to 4 channels on the ADPRO FastTrace 2 platform, LoiterTrace complements the powerful recording, transmission, and alarm handling capabilities of these platforms. With the ability to transmit alarm images to a remote central monitoring station, LoiterTrace increases the effectiveness of off-site monitoring. Now you have the option of having your site security efficiently managed by experienced security personnel.

Specifications

- Indoor and outdoor loitering detection video analytic application
- Up to 16 channels per FastTrace 2X unit
- Selectable loitering sensitivity (low, normal, high) and detection time
- Detects loitering even if the person remains static for a long time
- Based on Ground Region Of Interest (GROI)
- Camera tamper detection is integrated into FastTrace 2/2X
- Fully integrated solution and uniform GUI for analogue and IP cameras

Application Portal



The Xtralis Web based Application License Portal enables efficient creation and management of ADPRO FastTrace 2/2X application licenses.

- Efficiently create and dynamically manage FastTrace 2/2X Application licenses (Redeem, Revoke).
- Allows the installer/CMS to remotely install new application licenses.
- Immediately service customers in case of a technical issue. No waiting time.

LoiterTrace license models



Perpetual License Model

- Oriented to installations with indefinite application period
- Has no expiration date
- Active on one unit at a time
- Can be revoked an unlimited number of times
- Can be transferred for customer service



Timed License Model

- Oriented to installations with timed contracts (leasing models)
- Operational expenditure versus capital expenditure
- Has an expiration date
- Active on one unit at a time
- Can be revoked an unlimited number of times
- Can be transferred for customer service
- Includes 30 days of grace period for renewal



ADPRO FastTrace 2/2X + LoiterTrace

Unique Features

- Support for IP and Analogue cameras
- Supported on FastTrace 2/2X
- Cost efficient installation
- Improved detection quality
- Uncrowded scene application focus
- Fast installation and commissioning
- Flexible licensing system
- Fully integrated design
- Resolution/framerate independent
- 3 level sensitivity (low, normal, high)
- Remote servicing
- Software only add-on

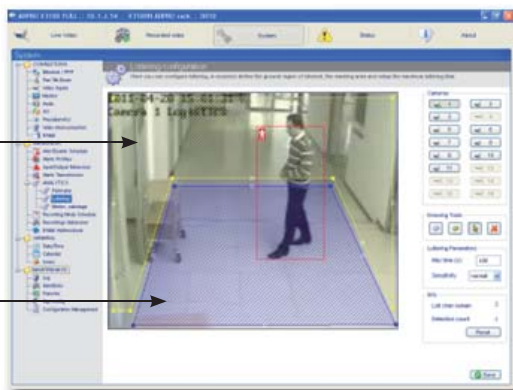


Quick and Easy LoiterTrace Setup

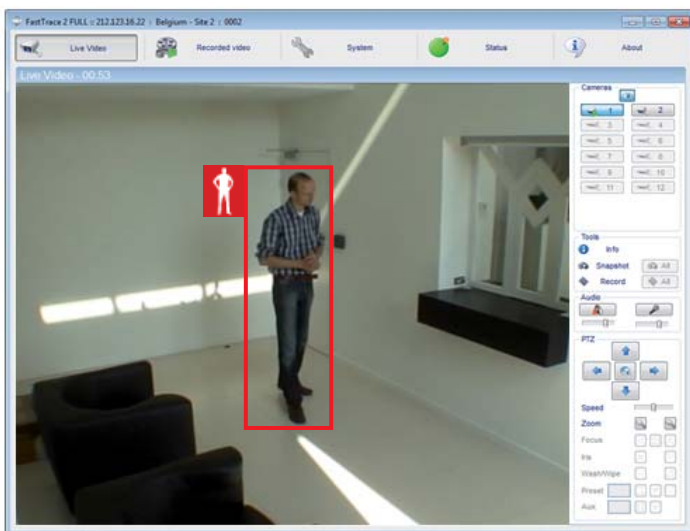
- Easy setup via integrated design tool in the FastTrace 2/2X client software
- Fully integrated with other FastTrace 2/2X features (alarms, transmission, recording)
- Detects loitering even if the person remains still for a long time (delay up to 180 seconds) – e.g. sleeping people
- No calibration required

Ability to create polygonal MASKING zones (region of the image which should not be processed e.g. a flashing light, trees, cars, OSD time stamp information, etc).

Polygonal DETECTION zones with selectable loitering sensitivity and time (low, normal, high).



- Analytic bounding boxes available on live, recorded and exported images:
 - Directly visible after settings are configured and saved
 - Bounding boxes info as metadata, not flattened in the image

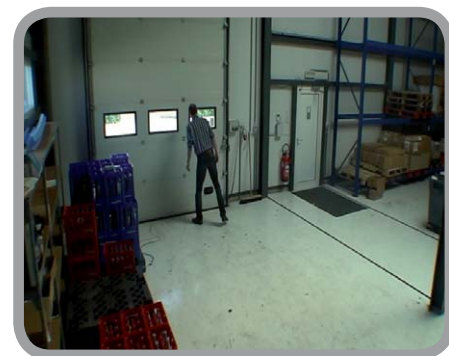
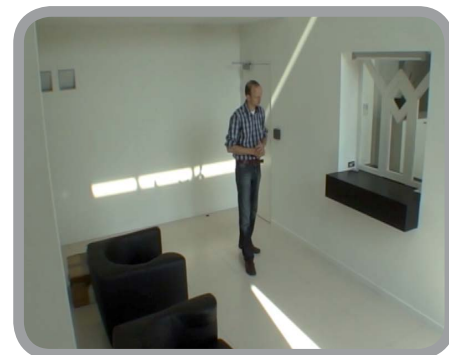


The LoiterTrace application can be combined with other available Xtralis FastTrace 2/2X video content analytic applications (IntrusionTrace, IntrusionTrace PLUS, ...) in any combination related to all 16 channels of a FastTrace 2X or to maximum of 4 channels of a FastTrace 2.



ADPRO FastTrace 2/2X + LoiterTrace

Typical detection scenes



www.xtralis.com

UK and Europe +44 1442 242 330 D-A-CH +49 431 23284 1 The Americas +1 781 740 2223

Middle East +962 6 588 5622 Asia +86 21 5240 0077 Australia and New Zealand +61 3 9936 7000

The contents of this document are provided on an "as is" basis. No representation or warranty (either express or implied) is made as to the completeness, accuracy or reliability of the contents of this document. The manufacturer reserves the right to change designs or specifications without obligation and without further notice. Except as otherwise provided, all warranties, express or implied, including without limitation any implied warranties of merchantability and fitness for a particular purpose are expressly excluded.

Xtralis, Xtralis logo, The Sooner You Know, VESDA, ICAM, ECO, OSID, HeiTel, ADPRO, IntrusionTrace, and LoiterTrace are trademarks and/or registered trademarks of Xtralis and/or its subsidiaries in the United States and/or other countries. Other brand names mentioned herein are for identification purposes only and may be trademarks of their respective holder(s). Your use of this document does not constitute or create a licence or any other right to use the name and/or trademark and/or label.

This document is subject to copyright owned by Xtralis. You agree not to copy, communicate to the public, adapt, distribute, transfer, sell, modify or publish any contents of this document without the express prior written consent of Xtralis.

Doc. no. 25889_01