

# 1500 series



## General Handheld Scanner

Bringing retail productivity and performance up to speed, the 1500 series of scanners offers powerful reliability with efficiency. Ideal for a wide range of applications from retail to healthcare and post offices, the 1500 scanner is not only advanced, but its ergonomic design also provides extreme durability – day in, day out.



# 1500 series

General Handheld Scanner

## 1500 Series Scanners from CipherLab

### Accelerate your business

Handheld scanners are much faster than human fingers. Pull the trigger and the work is done instantly: complete series, update inventories, check patient records, and record production line parts and activities. Handheld scanners accelerate work with error-free capture of critical information, keeping your company data up to date and up to the minute.

### Cut costs

CipherLab scanners are versatile, agile, and priced right for long-lasting value. Your company benefits from years of use, backed by a manufacturer honored in the industry for its innovative, reliable products and customer service. The 1500 series scanners capture data from regular to long barcodes with a choice of linear imager, 2D imager, or laser. Together with *Bluetooth*<sup>®</sup> cordless and corded applications, the 1500 series scanners help you run business more efficiently with improved operations.

### Go where the work takes you

The 1500 series includes wireless scanners to unleash workers, so they can go where the work is and get more done, in more places. Our 1500 series *Bluetooth*<sup>®</sup> scanners connect with the communication stand up to 90 meters (295 feet) away. Beyond that, they keep working by storing information until the scanner is back in range.



## Smart solutions with immediate payoffs

### Accelerate receiving with fast, reliable, low-cost CipherLab 1500 handheld scanners

European retail giant Valora deployed 1,100 CipherLab 1500 scanners to improve product receiving in its Swiss sales outlets.



“After performing extensive tests, it was clear that the CipherLab scanner performed much better than any of the other solutions. We had no previous experience with CipherLab and were positively surprised with its error-free scans, reliability, and the convincing value for money it offers.”

*Christian Wurger, Head of the Corporate IT Operation/ Support, Valora, Switzerland*

### Streamline tracking and delivery with wireless CipherLab *Bluetooth*<sup>®</sup> scanners

To ensure better tracking and delivery of mail and goods, Brazil's ECT, the largest post office in Latin America, relies on the flexibility and productivity of CipherLab *Bluetooth*<sup>®</sup> scanners.



“With the new scanners, employees can easily reach the items to scan. They can walk around outdoors and scan packages in the unloading/departing zones, allowing them to work faster and get more work done. And the database is always updated when they are back in wireless range.”

*Marcel Gomes, Complex Solutions Provider for ECT, Brazil.*

### Update stock and reply distribution requirements in real time with wireless CipherLab *Bluetooth*<sup>®</sup> scanners

To ensure accurate CD/DVD replenishment, ASDA/Wal-Mart combines the wireless connectivity of CipherLab *Bluetooth*<sup>®</sup> scanners and Smartphones/PDAs to instantly send stocking requirements to the distribution center.



“After searching worldwide for scanners with good communication capabilities, we found CipherLab *Bluetooth*<sup>®</sup> scanners with high-quality and reliable performance. CipherLab scanners not only provide real-time stocking updates, but also record deliveries made to the actual supermarkets, which improves the efficiency of our business operation.”

*Altaf Sadique, CEO, Gane Data LTD., United Kingdom*



## Snappy scanning, speedy decoding

The 1500 series with linear imaging reader scan and decode barcodes up to 200 times per second to speed work, eliminate rescans and keep up with your fastest operation. This high speed delivered with low power consumption makes auto-sense scanning very effective.

## Wireless freedom

### Range of Operation

The 1500 series *Bluetooth*® wireless scanners have a 90-meter line-of-sight range from the communication stand. If it's not in range, with the optional linear imager and laser scanners, the scanner's buffer memory holds up to 256 scans in reserve, ready to transmit automatically when you're back in range again. Or, use batch mode to record over 32,000 scans – that's freedom to roam widely. The 1500 *Bluetooth*® scanner with 2D reader has a buffer memory of 10 K or 4 MB in batch mode.

### House of Wireless Power

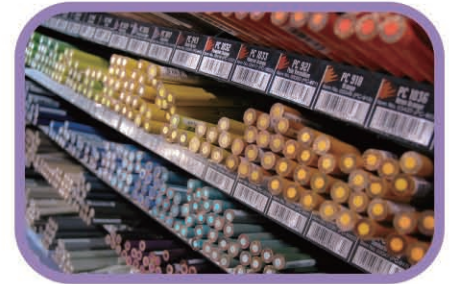
CipherLab offers you the multi-shift service with the 1500 series *Bluetooth*® scanner. Without interruption of workflow, users get to finish work more productively and efficiently.

## A Great Variety at Your Fingertips

Every business is different and has different scanning needs, which is why CipherLab have a broad range of scanners to suit any businesses whatever their needs. The 1500 series comes in a range of varieties. The linear imager scanner offers the option of reading long barcodes, for example the ones on bills, making it suitable for utility companies, banks, and collecting agencies. The option of 2D imager is good for scanning barcodes on medicine packaging or hospital equipments making them suited for pharmaceutical or hospitals.

## PC Software to Custom-Configure Scanners to Any Environment

CipherLab **ScanMaster** software provides comprehensive tools to configure any scanner, such as enabling and disabling hands-free scanning, choosing edit format and symbology types, plus more. With ScanMaster, scanners can be easily customized to fit every working environment. ScanMaster for PC is included with all CipherLab scanners. In addition, 1500 series is also supported by **CipherConnect** which is a COM-to-key utility designed for CipherLab *Bluetooth*® scanners to work as an input device for smart devices, such as Smartphone or PDA. The software enables intensive data collection and transmission via CipherLab *Bluetooth*® scanner to the smart device.



# 1500 series

## General Handheld Scanner



	Linear Imager	Laser	2D Imager	
Category	Corded <b>1500, 1500WA</b>	<b>1502</b>	<b>1504, 1504SE</b>	
RF Communication of Bluetooth® scanner	Bluetooth® cordless	<b>1560</b>	<b>1564</b>	
	Module	Bluetooth® Class 2 (2.4 GHz) Version 2.1+EDR		
	Coverage	90 m <sup>2</sup> / 295 ft. line of sight		
	Standard profile	SPP, HID		
Performance	Optical sensor	2500 pixels	Laser	752 x 480 pixels
	Light source	Red LED 625 nm (1560: Red LED 618-626 nm)	Visible laser diode at 650 ± 15 nm	625 ± 5 nm LEDs (2x)
	Resolution	3 mil	4 mil	3 mil - 1D barcode / 5 mil - 2D barcode
	Depth of field 13 mil barcode	0.5 to 35 cm / 0.2 to 13.8 in. (1500WA: long barcode 8.2 cm, 8 mil- 7.5 to 14.5cm / 3 to 5.7 in.)	2 to 57 cm / 0.8 to 22.4 in.	Code 39 3 mil: 6.9 to 10.7 cm / 2.7 to 4.2 in. Code 39 5 mil: 3.6 to 18.5 cm / 1.4 to 7.3 in. UPCA 13 mil: 4.0 to 30.5 cm / 1.6 to 12 in. PDF417 5 mil: 7.1 to 11.4 cm / 2.8 to 4.5 in. PDF417 6.67 mil: 4.8 to 17.5 cm / 1.9 to 6.9 in.
	Scanning angle	Pitch ± 70° Skew ± 70°	Pitch ± 65° Skew ± 50°	Pitch ± 60° Skew ± 60°
	PCS	Minimum 30%	Minimum 45%	Minimum 30%
	Scan rate	200 scans, decodes / second (1500WA: 100 scans / second)	100 scans / second	60 scans / second
	Ambient illumination	100,000 lux		
	Hands-free scanning	Auto-sense and continuous modes	Continuous mode	Auto-sense mode, and presentation mode
	Barcodes support	Codabar, Code 39, Code 93, Code 128, GS1 DataBar (RSS), Industrial 2 of 5, Interleave 2 of 5, ISBT-128, Italian and French Pharmacodes, Matrix 2 of 5, MSI, Plessey, Telepen, UPC-A, UPC-E, EAN-8, EAN-13, GS1-128 (EAN-128)		1D: All major codes <sup>2</sup> 2D: PDF417, MicroPDF417, Composite, RSS, TLC-39, Datamatrix, QR code, Micro QR code, Aztec, MaxiCode Postal Codes: US PostNet, US Planet, UK Postal, Australian Postal, Japan Postal Dutch Postal (KIX)
	Programmable features	Data editing, interface selection, symbology configuration		
	Language support	US and UK English, French, Italian, Belgian, Norwegian, Swedish, Spanish, Portuguese, German, Swiss German, Japanese, Turkish, Hungarian, and Danish		
Physical	Dimension L x W x H	15.3 x 6.1 x 9.3 cm / 6.0 x 2.4 x 3.7 in.		
	Weight without cable / with battery	145 g / 5.1 oz. (1560: 173 g / 6.1 oz.)	1502: 149 g / 5.2 oz. 1562: 177 g / 6.2 oz.	154 g / 5.4 oz. (1564: 185 g / 6.5 oz.)
	Color	Black		
	Switch	Tactile Switch		
Electrical	Memory for Bluetooth® scanner reserver buffer / batch mode	4 K / 512 K		10 K / 4 MB
	Working hours for Bluetooth® scanner	24 / 12 hours depending on the CCD Sensor mode setting (Always Active function disabled / Always Active function enabled, default setting)	24 hours based on 1 scans / 5 seconds	16 hours based on 1 scans / 5 seconds
	Voltage	+5 V ± 10% / 3.7 V 800 mAh Li-ion battery		
	Power consumption <sup>3</sup> Standby / Operating	50 mA / 265 mA (1560: 45 mA / 270 mA)	1502: 35 mA / 210 mA 1562: 25 mA / 210 mA	1504: 30mA / 280mA 1504SE: 38mA / 196mA 1564: 35mA / 230mA
User Environment	Temperature	Operating: 0°C to 50°C / 32°F to 122°F Storage: -20°C to 60°C / -4°F to 140°F (w/o battery)		
	Humidity	Operating: 10% to 90% Storage: 5% to 95%		
	Impact resistance	1.5 m (4.9 ft) multiple drops onto concrete (1560: 1.2 m (3.9 ft) multiple drops onto concrete)	1.2 m (3.9 ft) multiple drops onto concrete	
	Ingress protection	IP30		
	Electrostatic discharge	±8 kV contact ±15 kV air		
EMC regulation	1500: BSMI, CE, C-tick, FCC, IC, KC 1500WA: BSMI, CE, C-tick, FCC, IC 1560: BSMI, CE, C-tick, FCC, IC, KC, NCC, SRMC, TELEC	1502: BSMI, CE, C-tick, FCC, IC, KC 1562: BSMI, CE, C-tick, FCC, IC, KC, NCC, SRMC, TELEC	1504: BSMI, CE, C-tick, FCC, IC, KC 1504SE: BSMI, CE, C-tick, FCC, IC 1564: BSMI, CE, C-tick, FCC, IC, NCC, KC, SRMC, TELEC	
Configuration	Setup options include Windows-based ScanMaster software, by direct connection or printing out barcode settings			
Accessories	USB, RS232 and keyboard wedge cables, hands-free adjustable stand Three-way desk/wall/auto-sense stand with optional weighted base, communication stand for Bluetooth® scanner provides Bluetooth® communication for up to 7 scanners, single battery charger for Bluetooth® scanner			
Warranty	5 years (1560: 3 years)		3 years (engine 1 year)	

1. It is based on communication stand without weighted base. 2. All of the barcodes that 1500 series 2D scanners can read except French Pharmacode, Plessey, Telepen, and ISBT-128 (1504SE only).  
3. The data is tested with USB interface.



**HEADQUARTERS**  
CipherLab Co., Ltd.  
12F, 333 Dunhua S. Rd., Sec.2  
Taipei, Taiwan 10689  
Tel +886 2 8647 1166  
Fax +886 2 8732 3300  
[www.cipherlab.com](http://www.cipherlab.com)

**CipherLab Electronics Trading**  
(Shanghai) Co., Ltd.  
J Room, 4F, No.728 West Yan'an Rd.  
Changning District, Shanghai  
China 200050  
Tel +86 21 3368 0288  
Fax +86 21 3368 0286

**CipherLab USA Inc.**  
2552 Summit Ave.  
Plano, Texas USA 75074  
Tel +1 469 241 9779  
Toll Free 888 300 9779  
Fax +1 469 241 0697

**CipherLab GmbH**  
Gießerallee 21  
47877 Willich  
Germany  
Tel +49 2154 89777 20  
Fax +49 2154 89777 32