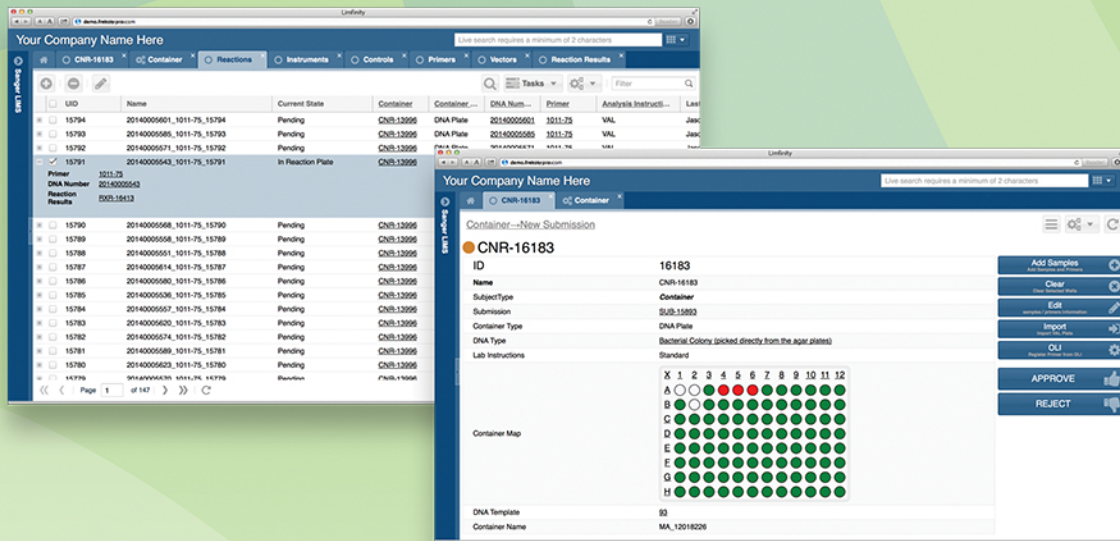


RuRo

Laboratory Information Bliss™

Limfinity®

Information Management System



Limfinity® presents a unique opportunity for Life Science organizations to comprehensively gain control of program work and data. What makes Limfinity® different is its methodology - Limfinity® tools put the powers of configuration, deployment, extension, general administration of one of the most advanced Information Management Systems available today in the hands of admin customer staff, with or without IT expertise.

Traditional LIMS or other Information Management System deployments have a history of creating great positive change for Life Science organizations. However, tied to this history is one commonly occurring problem: the best systems are too resource intensive to acquire.

Enter Limfinity®

Limfinity® is engine underneath RURO's system LIMS 24/7® - used all across the world, including by the majority of top 5 pharmaceutical companies, as well as by the leading Genomics and Translational Medicine programs of today.

Limfinity® is now available as a standalone platform. In its first year, Limfinity® proved that user organizations were able to deploy the system themselves and gain its many benefits with little or no provider support along the way.

The Language of Information Management

Limfinity® universal classification and design methodology consists of the following core components:

SUBJECTS

Limfinity® defines Subjects as anything from billing forms to test samples, from patients to sequencing instrumentation and any other physical or non-physical item to be managed. By precise user defined field types, Limfinity® is able to treat all Subjects exactly the same for system features such as configurable reports, GANTT, workflow progressions, import/export, barcode and RFID label configuration, and all others.

WORKFLOW STATES

Each Subject that moves through a process goes through States along the way. Limfinity® allows the definition of each such State to precisely detail activity without code writing, allowing a non-IT user with appropriate access permissions to assemble or update the user experience.

STATE TRANSITIONS

The connections between States are called Transitions. In Limfinity® users can make transitions "smart" by selecting conditions from an unlimited number of possible field content combinations. This can make portions of the system "free" for users to enter data as they wish and others where users must adhere to predefined rules.

DEVELOPER API

Limfinity® includes comprehensive API, an "external plug in" feature and other tools to create automated data transfer.

USER GROUPS

Determine what specific content a user can view and whether they can edit or add data to records.

ROLES

Determine what features and major sections of content a user can view and utilize.

Deploying Limfinity®

In order to deploy Limfinity® in your organization, select from two available options.

○ LIMFINITY PRO

Your organization will project manage, configure and deploy Limfinity®. RURO recommends that Limfinity Pro customers also purchase some amount of RURO Technical Services hours. This option is ideal for existing FreezerPro® customers who are already familiar with configuring RURO software.

○ LIMFINITY PLUS

Your organization will help RURO project manage, configure and deploy Limfinity. RURO assistance using this option typically accomplishes roughly 75% completion in all categories.

Limfinity® Benefits

- Go paperless
- Standardize nomenclature
- Single sign-on, central data location
- Stop reentering data
- Automatic entered data checks
- Automatic data distribution and reporting

Contact us at:

888-881-RURO (7876)
301-639-5546

sales@ruro.com

RuRo Laboratory Information Bliss™
www.ruro.com

Visit www.RURO.com for more information

Compliance:

FDA 21 CFR Parts 11, 21, 58, 210, 211, 820
cGMP/cGMP (Good Laboratory Practice and Good Manufacturing Practice)
Section 508 Accessibility Guidelines
HIPAA Accountability Act of 1996
HIPAA Patient Safety and Quality Improvement Act of 2005 (Patient Safety Act)

Compatibility:

