



SMART*desks*<sup>®</sup>

**FFIT***floor*<sup>®</sup>

Furniture Floor Integration Technology

NOW supporting GPON  
fiber for greater bandwidth  
and lower energy costs



# FFIT<sup>®</sup>floor

## Floor + Furniture Integration Technology

Better power and data cable management from the ground up

SMARTdesks<sup>®</sup> FFIT<sup>™</sup> Computer Floor lets you locate power & data in any architectural space for unlimited flexibility and design freedom.

SMARTdesks<sup>®</sup> furnishings are mobile, making re-arrangement possible for any activity.

The FFIT<sup>™</sup> Floor and furniture move together, to support changes in the room arrangement. You are not locked-in to a static floorplan. Power and data cables are hidden under the floor.

**Any change can be accomplished instantly because these issues are not involved:**

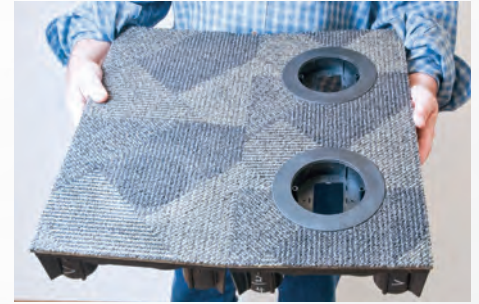
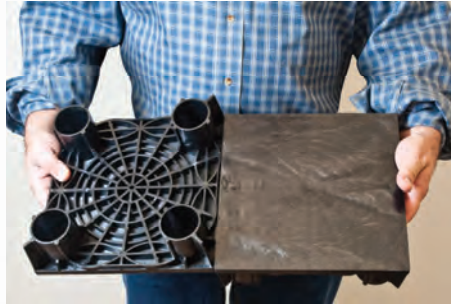
- no core drilling
- no special tools
- no specialized “trades”
- no demolition
- no material waste
- no time waste
- no coordination
- no environmental impact!

SMARTdesks<sup>®</sup> now gives you the freedom to change how you utilize space. You are never locked-in to a static arrangement.

Power and data locations may be moved instantly and at no cost. Furniture can move to suit any new arrangement and the power and data wiring will adapt accordingly.

Changes can be made instantly—on the fly. Smartdesks<sup>®</sup> can provide a coordinated plan that encompasses power, network wiring, space planning, and furnishings.

A flexible, complete solution.



Interchangeable carpet tiles self-adhere to a set of four pedestals. This allows flex, so they float on the floor without laser leveling.

Universal outlet ports for power, data, AV or pass-thru may be located in any of the pedestals. Pedestals are 3" high, providing a generous cable way capacity. Weight capacity tested to 50,000 lbs for each pedestal. 25 US tons.

Assembled right over carpet or foam pad for bare floors. No demolition.



UL Approved power cables and outlets are snapped together and placed on the floor. The outlets get snapped into place and cable is buried under the floor. If an outlet location needs to be changed, simply lift the outlet tile, move it, and bury the cable back into the floor.

When the cable is laid out on the floor, it is easy to visualize the circuit plan and make it look like the installation wiring diagram.





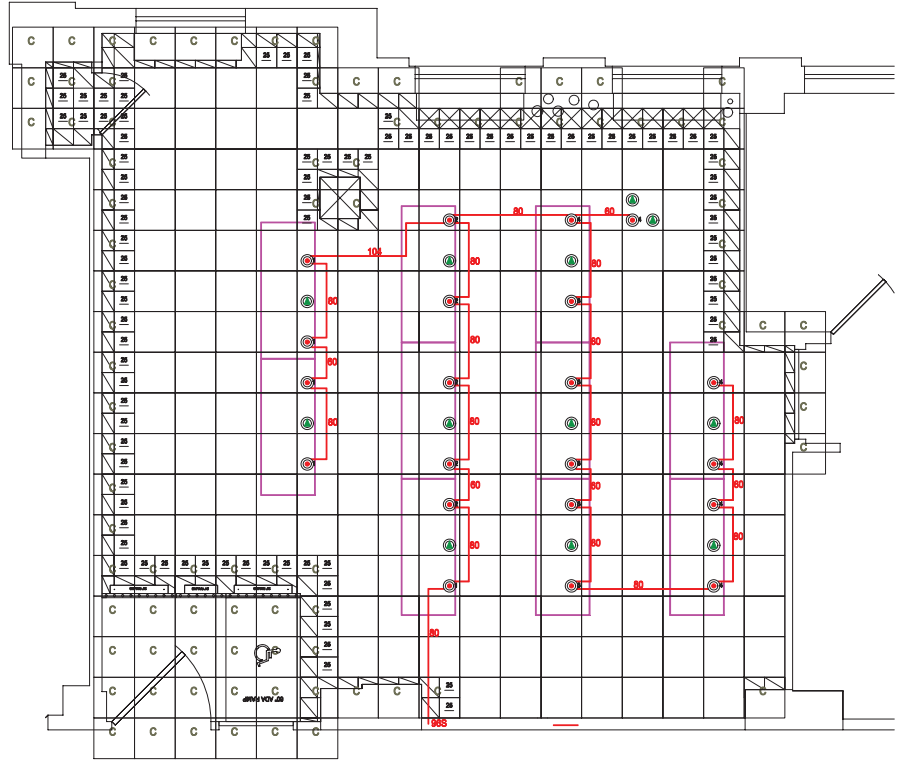
## Saves money & time:

- Installs in hours, not days
- Specialized labor not required for installation
- Easily coordinates with other trades
- Not a part of the building, depreciates like furniture: 7yrs vs 39 yrs
- Lower cost alternative to conventional carpet & electrical contracting

## GREEN:

### Low environmental impact

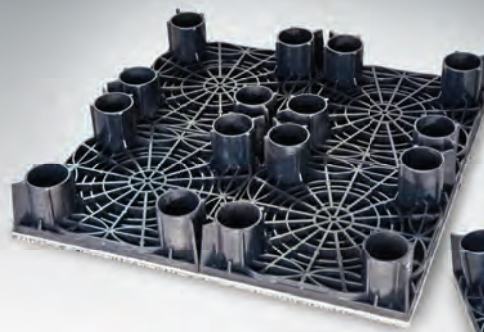
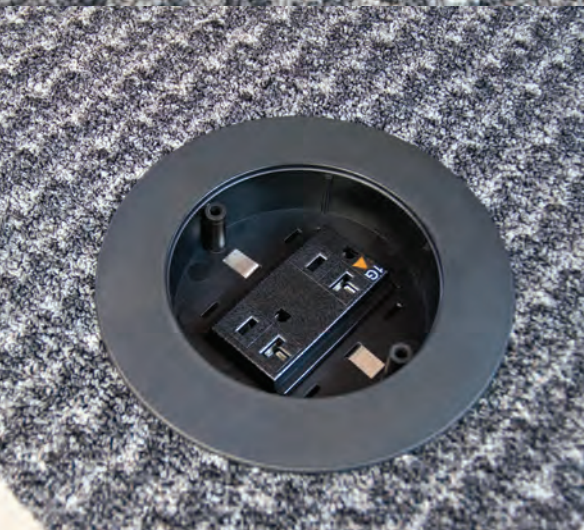
- Reusable! Accommodate move, add, change and churn without waste
- Put power and data anywhere
- Relocate power and data any time
- Move the floor system to another room or building
- Reuse and re-arrange as you would the furniture



This floor plan shows the placement of SMARTdesks furniture aligned with power and data outlets in the FFITfloor.

The architectural space is located in a late 19th Century historic building, which was updated for a large scale video teleconferencing meeting room.

The historic building could not be altered in any way. The FFITfloor was used because installation was completely non-invasive and no demolition was required. FFITfloor was laid down on existing carpet installed on original hardwood.



The interchangeable carpet tile sections feature four pedestals: each pedestal has the capability of being fitted with an outlet for power, data or cable pass-through.



Custom cutouts

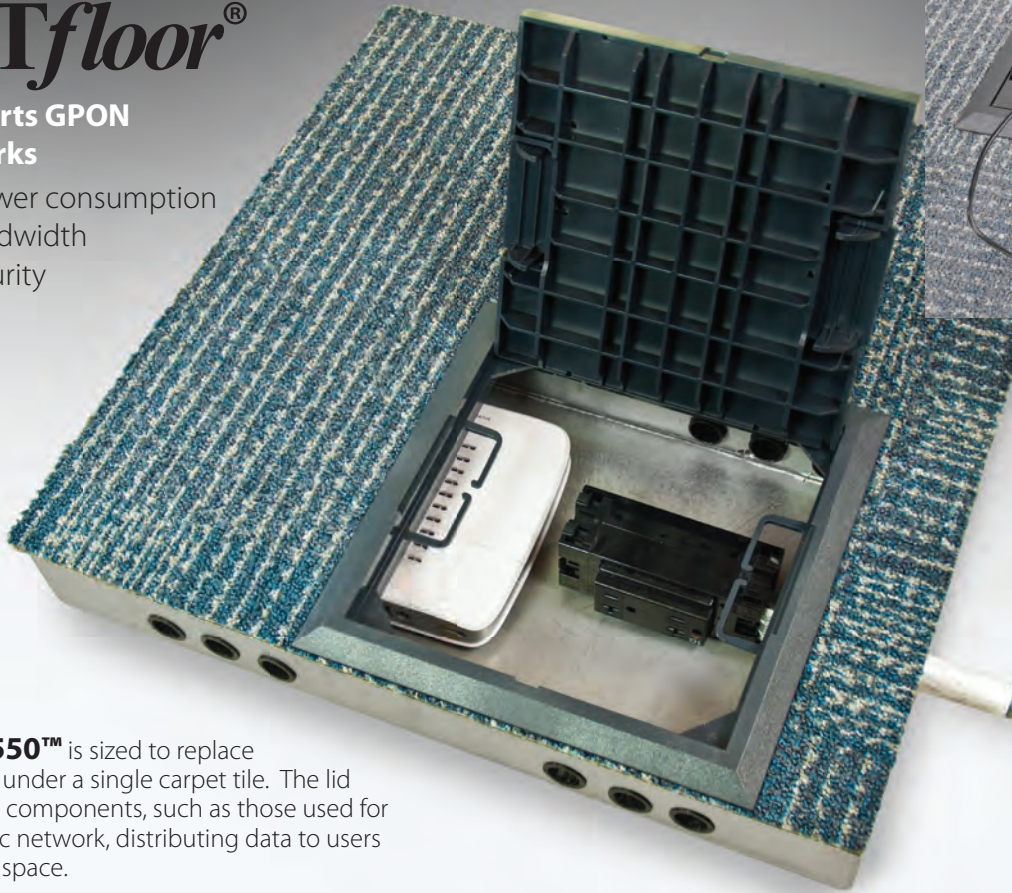
**FFITspace2525™** with full access lid and cable pass wings can replace a pedestal quadrant to accept components and junction boxes. 12 gauge steel. Inside dimensions 24.13cm x 24.13cm x 6cm / 9.5" x 9.5" x 2.375"



# FFITfloor®

**NOW supports GPON fiber networks**

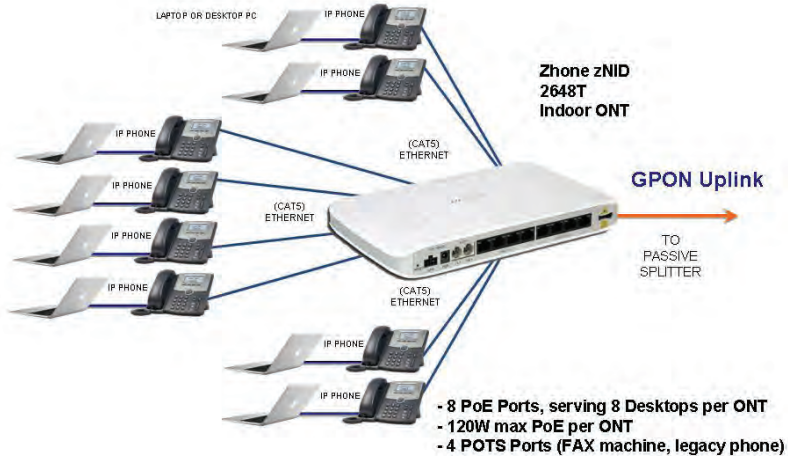
- Efficient power consumption
- Greater bandwidth
- Greater security



## FFITspace2550™

Inside dimensions:  
 24.13cm x 48.9cm x 6cm  
 9.5" x 19.25" x 2.375"  
 12 gauge steel  
 Cutouts may be customized.

**FFITspace2550™** is sized to replace 2 of 4 pedestals under a single carpet tile. The lid allows access to components, such as those used for GPON fiber optic network, distributing data to users throughout the space.



## Floor + Furniture Integration Technology

Better power and data cable management from the ground up

Bring your IT integration requirements to SMARTdesks. Let's collaborate to make your space work for your mission today and whenever you need to change to accomplish the mission tomorrow.

SMARTdesks offers complete interior design services with no cost or obligation. Furniture designs are customized and produced for each customer. The FFITfloor is designed to work as one with the furniture, the space and the technology. Backed by a 10 year manufacturer's warranty, FFITfloor may be purchased separately from the furniture.



[www.smartdesks.com](http://www.smartdesks.com)

800 770 7042