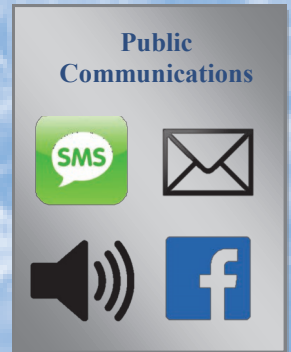
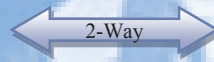
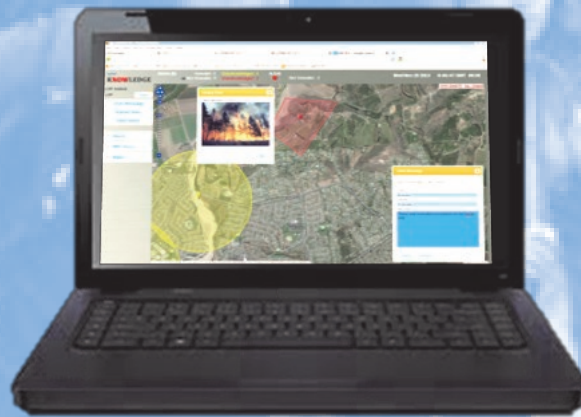




# iNOTiFY KNOWLEDGE

The Right Information  
To the Right People . . . . **NOW !!!**



## PRIVATE COMMAND AND CONTROL

Communicate **PRIVATELY** with your emergency response team/staff using geo-tagged pictures, audio and text.

## RECEIVE NATIONAL ALERTS (IPAWS)

Receive real-time alerts and warnings sent by FEMA, National Weather Service and other Emergency Managers.

## PUBLIC ALERT

Send **YOUR** message to the public via email, SMS and Facebook; as well as broadcast via sirens and Public Address systems.

## What is iNOTiFY?

Plain and simple . . . iNOTiFY empowers Emergency Managers with the communications tools they need to get their message . . . their **KNOWLEDGE** . . . out **NOW**.

- **Team Collaboration:** In every emergency, there is a need for private as well as public communications. Using the iNOTiFY browser and smart phone interfaces, Emergency Managers can communicate *privately* with their Emergency Support Function (ESF) teams using rich media (text, audio, and pictures) presented on a map display. SOS and Status functions are also available.
- **IPAWS/FEMA:** All Emergency Managers need to fully communicate with the National FEMA/IPAWS network. Using the *same* web browser and smart phone interfaces described above, this communication can be performed from virtually any location.
- **Public Communication:** When the time arises for a public announcement to be made, the *same* iNOTiFY web browser and smart phone interfaces can also be used to issue alerts, warnings and directions to the public via email, SMS, Facebook and even public address systems and sirens.

In a nutshell, iNOTiFY provides 3 vital emergency communications mechanisms; all within a **SINGLE** system.



# iNOTiFY Info . . .

## HOW TO GET STARTED

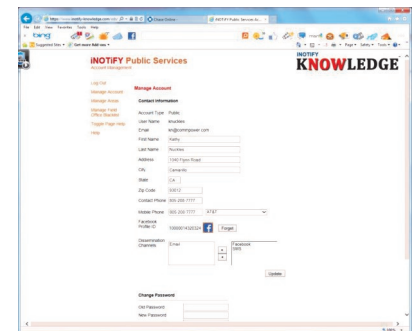
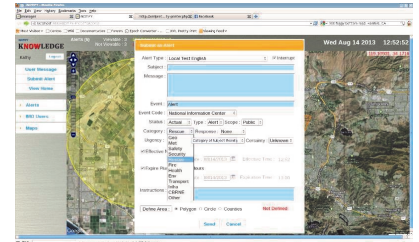
This is the easy part . . . Contact us! We want you to be comfortable that iNOTiFY will indeed fulfill your Emergency Management needs. To help guarantee this, we have a “play” system that can be made available to prospective (i.e. serious) clients who want to kick the tires. We encourage you to take advantage of this offer. Afterwards, if you are convinced that iNOTiFY is the system for you, we will work with you to provide a capability that fits your needs.

We look forward to hearing from you:  
Kathy Nuckles  
805-389-7414 x129  
kn@commpower.com

## What does iNOTiFY Look Like?

From the user perspective, iNOTiFY is an easy to use system that is accessed primarily via a Browser Interface and a Smart Phone App as follows:

- **iNOTiFY Administrative Terminal (iAT):** Using this browser interface, the Emergency Operations Center (EOC) can manage its privileged user accounts and tailor iNOTiFY configuration settings to best support its mission.
- **iNOTiFY Collaboration Terminal (iCT):** This map-based browser interface is the workhorse of iNOTiFY. Using the iCT, EOC personnel can communicate real time with the FEMA IPAWS network, the ESF teams and the public using text, audio and pictures.
- **iNOTiFY Mobile Observer App (iMO):** The iMO App is the mobile version of the iCT. Using this intuitive dashboard interface, all members of the Emergency Management team can communicate and collaborate wherever they happen to be.
- **ChatterBox Appliance:** The ChatterBox is an OPTIONAL iNOTiFY component that is only required if interfacing to public address systems or sirens is desired. Think of the ChatterBox as a smart router that you install within an equipment room and forget about.
- **Public Portal:** In order for the public to receive direct iNOTiFY communications, they are invited to sign-up for an iNOTiFY account using a simple web browser interface. Once registered, they can specify the types of alerts/warnings they wish to receive, as well as how they would like to receive them (email, SMS, Facebook).



## Technical Stuff:

iNOTiFY is ideally offered as a hosted service, however, for large, expert customers, the iNOTiFY server images can be made available for installation onto commercial grade servers. These images represent RedHat Linux hosts, packaged as VMware virtual machines. The minimum iNOTiFY core is comprised of 4 such images.

All iNOTiFY browser interfaces support Firefox and Chrome browsers.

The iMO App is available for Android and iOS devices.

The ChatterBox is a self-contained appliance that requires a dedicated 64kbs network link and connectivity to: a) your backside public address system via a line level interrupting feed; or b) your siren RF radio gear via a backside comms radio connection.