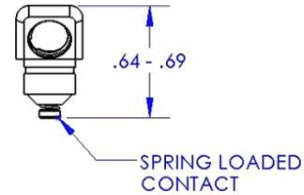
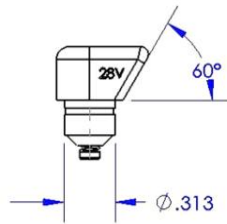
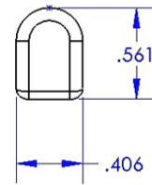




NVIS White Post Light Cap Insert



P/N	VDC
BW-A-165-01	28
BW-A-165-02	5



NVIS White Post Light Cap Insert

Blue Wolf's Post Light cap inserts are specifically designed for illuminating instrumentation used in Night Vision Environments such as aircraft cockpits, tanks, boating vessels, or other applications. The NVIS LED white light produced allows for easy viewing without "greening out" important indication colors such as "reds" and "yellows". Our post light cap insert is compatible with many existing incandescent original designs for easy upgrade modifications, or as a direct replacement for other current plastic NVIS LED post light caps. The spring loaded contact provides a durable positive contact which accommodates "wear" from older bases along with an enormous gain in life from the LED light source.

Quick Specs

40K HOURS	5 Volt	EASILY CHANGED DURING MAINTENANCE	Wide angle illumination 120°
LIFE SPAN	14 Volt	ROBUST ALUMINUM CONSTRUCTION	LOW PROFILE DESIGN
	28 Volt		

Description

****Direct Drop in replacement**

Technical Data

- Operating voltage: 28/14/5 Vdc or Vac
- Operating current: 16mA
- Mass: 0.07 oz (0.0019 kg)
- Material: Anodized black 6061-T6 Aluminum (AMS 4027/QQ-A-250/11)
- ML-STD 970, DOD-160 section 8, CAT U, Figure 8-7 curves F&F1
- Spring bottom for positive contact

Operating Features

- Brilliant NVIS white light for easy full color readability
- Low heat output
- Designed and Manufactured in the USA

Part Number:

- **BW-A165-01 28V**
- **BW-A165-02 5V**
- **BW-A165-03 14V**

NAICS:

333314, 335110 335122, 335129, 335931, 336321 336413, 541330 541490, 335129

Cage Code: #6PQC4 **DUNS:** 02-668-1220

Blue Wolf - NVIS White LED Lighting

9179 W. State St. Garden City, ID 83714

208-629-5222 www.bluewolfinc.com