

Annual Summit on

Artificial Intelligence

Philadelphia, USA August 25-27, 2014

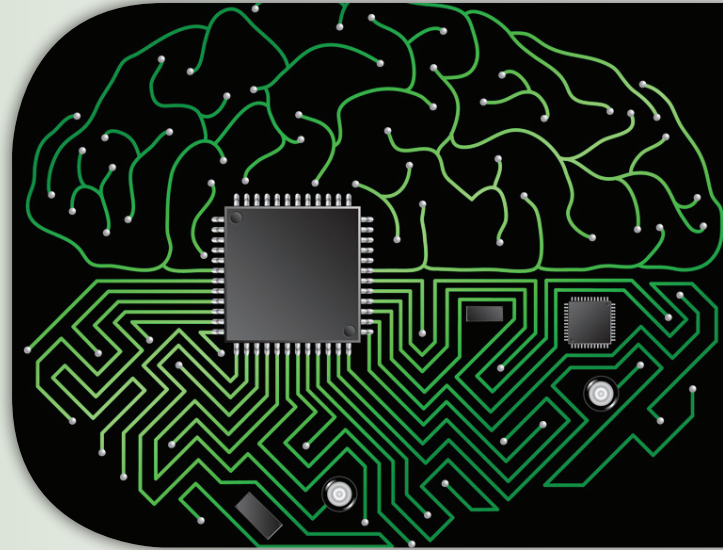
Dear Colleagues,

OMICS Group is delighted to welcome you to Philadelphia, USA for the prestigious **Annual Summit on Artificial Intelligence**. Artificial Intelligence-2014 will focus on **"Novel Approaches & Current Aspects in the Field of Artificial Intelligence"**. We are confident that you will enjoy the Scientific Program of this upcoming Conference.

We look forward to see you at Philadelphia, USA.

With Regards,

Artificial Intelligence -2014 Operating Committee
OMICS Group Conferences



Editorial Board Members of Supporting Journals:

Allon Guez

Drexel University, USA

Ho-Sheng Lin

Wayne State University School of Medicine, USA

Marco Bitetto

State University of New York, USA

Henry Hexmoor

Southern Illinois University, USA

Tarek M.Sobh

University of Bridgeport, USA

Larry D. Pyeatt

South Dakota School of Mines and Technology, USA

Bratislav Stankovic

University for Information Science and Technology, New York

Rene V. Mayorga

University of Regina, Canada

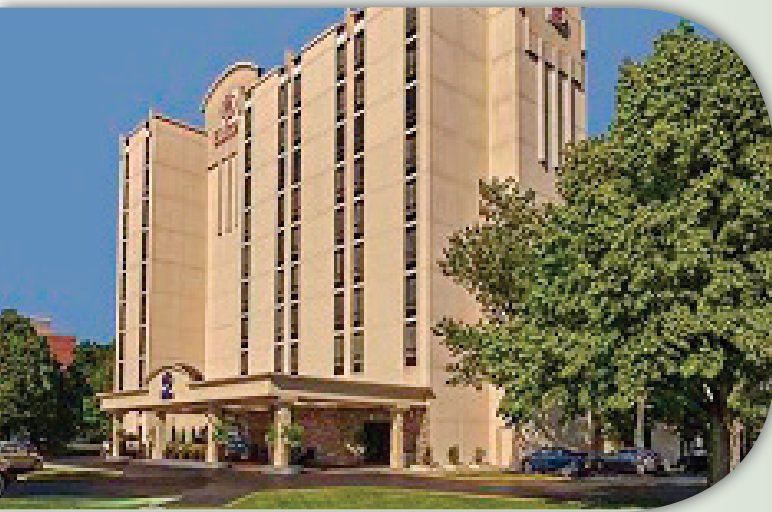
Nicolas Christian Buchs

University Hospitals of Geneva, Switzerland

Gunnar Bolmsjo

University West, Sweden

Program Announcement



Venue

Hilton Philadelphia Airport

4509 Island Ave., Philadelphia, PA 19153, USA

Important Dates

Abstract submission opens: January 22, 2014

Registration opens: January 22, 2014

Early bird registration: July 28, 2014

On spot registration: August 25, 2014

Accommodation

A large number of rooms have been reserved. Discounted room rates for Artificial Intelligence -2014 participants are proposed. Only reservations made through the Conference will benefit these rates. The Congress Center can be easily reached by public transportation.

Exhibition and Sponsorship

An Exhibition will be held concurrently with the Congress. The coffee break and lunch areas will be located adjacent to the booths. Thanks to exhibitors from all over the world, attendees will have a complete overview of new findings in the fields of Artificial Intelligence.

About Philadelphia

Philadelphia is the largest city in the Commonwealth of Pennsylvania, the second largest city on the East Coast of the United States, and the fifth-most-populous city in the United States. It is located in the Northeastern United States along the Delaware and Schuylkill rivers, and it is the only consolidated city-county in Pennsylvania. Philadelphia is the economic and cultural centre of the Delaware Valley, home to over 6 million people and the country's sixth-largest metropolitan area. Within the Delaware Valley, the Philadelphia metropolitan division consists of five counties in Pennsylvania and has a population of 4,008,994. Popular nicknames for Philadelphia are Philly and The City of Brotherly Love.

In 1682, William Penn founded the city to serve as capital of Pennsylvania Colony. By the 1750s, Philadelphia had surpassed Boston to become the largest city and busiest port in British America, and second in the British Empire, behind London. Philadelphia was one of the nation's capitals during the Revolutionary War, and the city served as the temporary U.S. capital while Washington, D.C., was under construction. The city is the centre of economic activity in Pennsylvania, and is home to the Philadelphia Stock Exchange and several Fortune 500 companies.

Philadelphia is known for its arts and culture. The cheese steak and soft pretzel are emblematic of Philadelphia cuisine, which is shaped by the city's ethnic mix. The city has more outdoor sculptures and murals than any other American city, and Philadelphia's Fairmount Park is the largest landscaped urban park in the world.

Conference Secretariat

5716 Corsa Ave., Suite 110, West Lake, Los Angeles, CA 91362-7354, USA

Ph: +1-650-268-9744, Fax: +1-650-618-1414, Toll free: +1-800-216-6499

Email: artificialintelligence2014@omicsonline.us