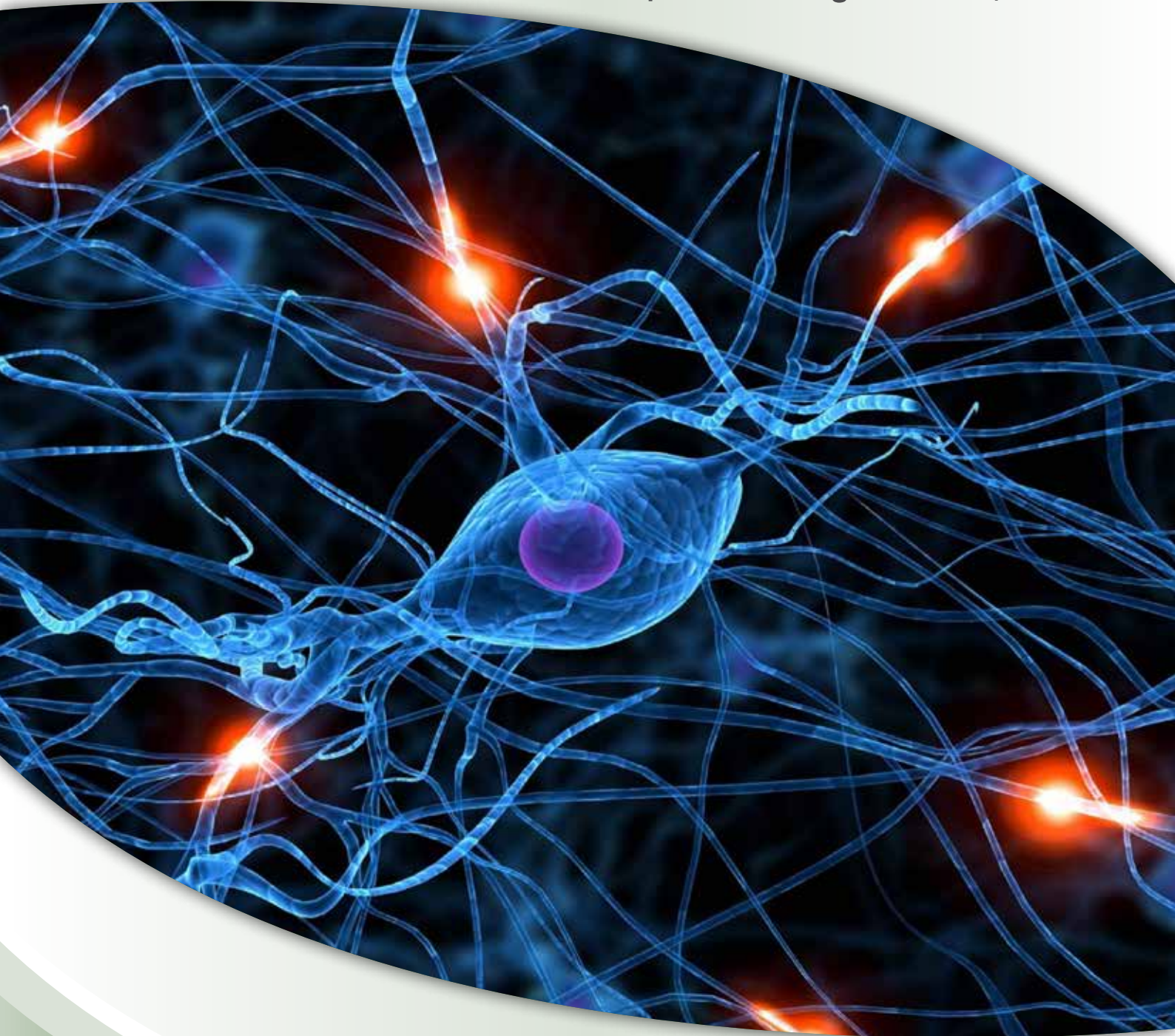


Annual Summit on

Artificial Intelligence

Philadelphia, USA August 25-27, 2014



Conference Secretariat

5716 Corsa Ave., Suite 110, West Lake, Los Angeles, CA 91362-7354, USA
Ph: +1-650-268-9744, Fax: +1-650-618-1414, Toll free: +1-800-216-6499
Email: artificialintelligence2014@omicsonline.us



Invitation

OMICS Group welcomes you to attend the **Annual Summit on Artificial Intelligence** during **August 25-27, 2014** at **Hilton Philadelphia Airport, USA**.

We cordially invite all the participants who are interested in sharing their knowledge and research in the area of Artificial Intelligence -2014.

Artificial Intelligence -2014 anticipates more than 300 participants around the globe with thought provoking Keynote lectures, Oral and Poster presentations. The attending delegates include Editorial Board Members of related OMICS Group Journals.

This is an excellent opportunity for the delegates from Universities and Institutes to interact with the world class Scientists.

The intending participants can confirm their participation by registering for the conference along with your colleagues. Avail the delegate early bird offer.

The main theme of the conference is "**Novel Approaches & Current Aspects in the Field of Artificial Intelligence**".


Regards,

Artificial Intelligence -2014 Operating Committee



About Us

OMICS Group Journals

- 300 Open Access Journals
- 21 Day rapid review process
- 22000 Editorial team, 27000 Reviewers team
- 2.5 Million readers and high visibility
- More than 100000 
- Publication immediately after acceptance
- Quality and quick editorial, review processing

Key features

- User friendly/feasible website translation of your paper to 50 world's leading languages
- Enhanced feature: Audio version of published paper
- Digital articles to share and explore
- Sharing option: Social networking enabled
- Authors, reviewers and editors are provided with scientific credits

OMICS Group Conferences

- 80 Conferences all over the World every year
- Well organized scientific program
- Renowned speakers and scientists across the globe
- Poster presentations and world class exhibits
- Panel discussions and interactive sessions
- B2B meetings
- Perfect platform for Global Networking

Key features

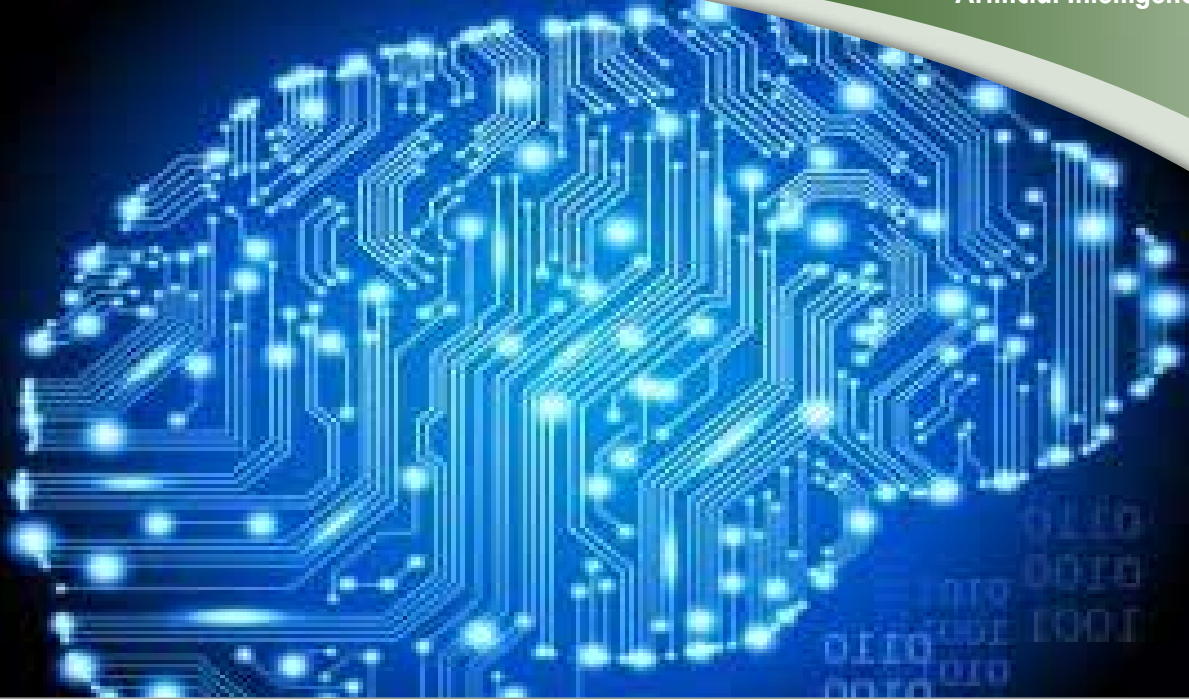
- Presentation by renowned speakers from all over the world
- Poster presentations and world class exhibits
- Interactive Sessions
- Platform for global networking
- Connecting scientific community



Special Issues

All accepted abstracts will be published in respective OMICS Group Journals

Each abstract will be provided with digital Object Identifier by 



The field of Artificial Intelligence is growing rapidly and its development is making tremendous impacts in medical sciences and pharmaceuticals. The importance and significance can be gauged by the fact that it has made huge advancements over the course of time and is continuing to influence various sectors.

Artificial Intelligence -2014

- Opportunity to attend the presentations delivered by eminent scientists from all over the world
- Selected contributions will be published in following OMICS Group Journals
 - Journal of Advances in Robotics & Automation
 - International Journal of Swarm Intelligence and Evolutionary Computation
- Participation in sessions on specific topics on which the conference is expected to achieve progress
- Global networking: In transferring and exchanging Ideas
- Conference brings together Scientific Researchers, Business Entrepreneurs and Pharma Industry Developers



About Philadelphia

Philadelphia is the largest city in the Commonwealth of Pennsylvania, the second largest city on the East Coast of the United States, and the fifth-most-populous city in the United States. It is located in the Northeastern United States along the Delaware and Schuylkill rivers, and it is the only consolidated city-county in Pennsylvania. Philadelphia is the economic and cultural centre of the Delaware Valley, home to over 6 million people and the country's sixth-largest metropolitan area. Within the Delaware Valley, the Philadelphia metropolitan division consists of five counties in Pennsylvania and has a population of 4,008,994. Popular nicknames for Philadelphia are Philly and The City of Brotherly Love.

In 1682, William Penn founded the city to serve as capital of Pennsylvania Colony. By the 1750s, Philadelphia had surpassed Boston to become the largest city and busiest port in British America, and second in the British Empire, behind London. Philadelphia was one of the nation's capitals during the Revolutionary War, and the city served as the temporary U.S. capital while Washington, D.C., was under construction. The city is the centre of economic activity in Pennsylvania, and is home to the Philadelphia Stock Exchange and several Fortune 500 companies.

Philadelphia is known for its arts and culture. The cheese steak and soft pretzel are emblematic of Philadelphia cuisine, which is shaped by the city's ethnic mix. The city has more outdoor sculptures and murals than any other American city, and Philadelphia's Fairmount Park is the largest landscaped urban park in the world.



Conference Details

Venue

Hilton Philadelphia Airport

4509 Island Ave., Philadelphia, PA 19153, USA

Important Dates

Abstract submission January 22, 2014

Registration opens: January 22, 2014

Early bird registration: July 28, 2014

On spot registration: August 25, 2014