



Aledyne
engineering

A Leader in Intuitive Testing & Measurement Solutions

Products

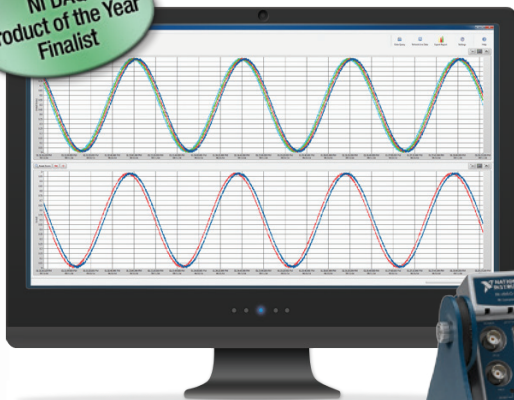
SigmaDAQ

SigmaDAQ provides complete control of your data by monitoring multiple channels from multiple devices and chassis simultaneously, all from one solution. To remove bottlenecks in testing environments, this full-featured software can deliver real-time mobile alerts containing visual and text notifications. SigmaDAQ is also built with smart technology which actively searches, reconnects and continues collecting data in the event of a lapse in device connectivity. As a superior and flexible data monitoring solution, SigmaDAQ provides automated Excel report generation and the unique ability to access data from multiple locations simultaneously.

- Reduce Memory Consumption – Collect different sample rates across channels and save only the data you need
- Save Time – Simple and easy set-up allows for configuring network DAQ devices within SigmaDAQ, no additional software needed
- Reduce Downtime, Maximize Uptime – With auto-reconnect, no user interaction is required during a lapse in connectivity



NI DAQ
Product of the Year
Finalist



SigmaDAQ - Configurable Data Logging and Reporting Suite

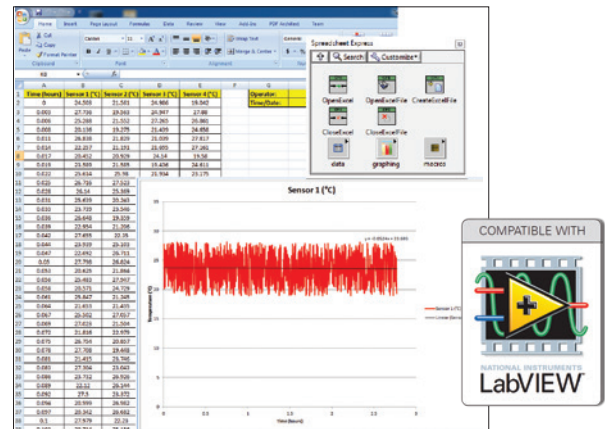


[Click here to learn more about SigmaDAQ](#)

Spreadsheet Express

Based on real-world interaction with the LabVIEW Report Generation toolkit, the engineers at Aledyne created Spreadsheet Express. Unlike similar software, Spreadsheet Express graphing is not limited to 4,000 data points and interfaces with delimiter-separated value files and Excel spreadsheets. This Toolkit delivers impeccably formatted Excel files for presentation and true Excel charts instead of OLE object charts for easier manipulation.

- Save Time – Automate repetitive tasks in Microsoft Excel
- Make an Impression – Advanced graphing features deliver cleanly formatted Excel files



Spreadsheet Express LabVIEW Toolkit - Automate Excel Data Processing and Charting From LabVIEW

[Click here to learn more about Spreadsheet Express](#)

Touchscreen Toolkit for LabVIEW

The Touchscreen Toolkit enables developers to create a richer user experience for their applications by providing a LabVIEW interface with both the Windows Touch API and Touch-Base Ltd's Universal Pointer Driver Device (UPDD). Compatible with both Windows 7 and 8, the Toolkit delivers the unique ability to zoom and pan within a LabVIEW graph's x and y axis plus cursor control during data analysis – all via touch. With multi-touch capable touchscreens, this is the only way to enable gesture recognition in LabVIEW.

- Increase Sales – Richer user experience for your applications
- Reduce UI Clutter – Within interactive applications, buttons can be replaced by gestures
- Reduce Footprint – Minimize the number of input devices; all work can be done through touch, eliminating the need for a keyboard or mouse and ensuring no desktop space is wasted

See a demo of the Touchscreen Toolkit at Aledyne.com!



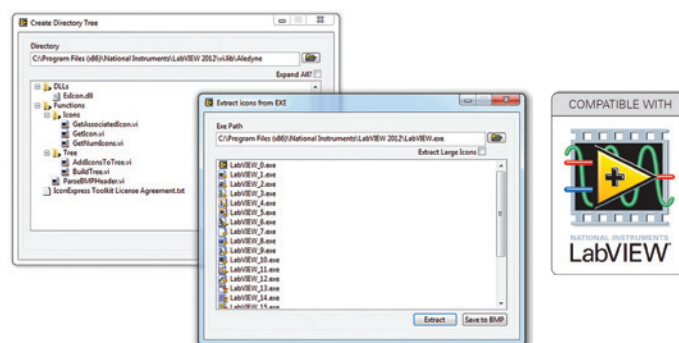
Touchscreen Toolkit for LabVIEW - Develop LabVIEW based multi-touch applications with ease

[Click here to learn more about Touchscreen Toolkit](#)

Icon Express

Icon Express programmatically extracts icons from EXE and DLL files and determines the windows-associated icon of any file then extracts and converts all icons to LabVIEW image data types. This free software can be used to create aesthetically pleasing file listboxes and tree diagrams with program/file related icons.

- Create LabVIEW icons fast – Extract icons from EXE and DLL files and convert to NI LabVIEW image types
- Enhance Usability – Included directory tree builder adds file icons to a tree list



Icon Express - Extract Icons From EXE Files

[Click here to learn more about Icon Express](#)

Aledyne Engineering

A Leader in Intuitive Testing & Measurement Solutions

Company Overview

Aledyne is a leading LabVIEW solutions provider delivering cutting-edge products and services, which enrich user experience and are configured to meet the unique needs of every client. Each solution is developed and refined with the end user in mind, delivering time savings and a tailored user experience.

Founded in 2005, Aledyne not only develops revolutionary products for LabVIEW instrumentation and developers but also offers a host of services ranging from National Instruments hardware interfacing to embedded systems development. With a strong foundation in consulting services and as a valued National Instruments Alliance Partner and LabVIEW Tools Network product developer, Aledyne is a key partner for your LabVIEW programming and integrated product needs.



Services

From data acquisition to industrial automation, the professionals at Aledyne deliver a complete LabVIEW solution. In addition to running LabVIEW on multiple platforms, Aledyne has a fundamental knowledge of embedded systems across different platforms including Microchip PIC, Atmel AVR and Freescale i.MX. Aledyne services include everything from analog/digital circuit design and schematics to component selection and PCB layout.

Aledyne utilizes LabVIEW for most system implementations but is well versed in a variety of other programming languages such as C/C++ and has a core competency working with Real Time Operating Systems (RTOS), focusing on Green Hills Integrity.

www.aledyne.com | 408.465.9825 | sales@aledyne.com

All product and company names are trademarks™ or registered® trademarks of their respective holders. Use of them does not imply any affiliation with or endorsement by them.