

# Desktop

Well Data, Document and Log Management



Desktop is a powerful Esri-based interface for organizing your company's well data, logs and documents into meaningful global and project views. Users can visualize, evaluate and manage projects, focusing on data access and evaluation, rather than data management. Regardless of which industry E&P applications you use, Desktop works as a command center to safeguard your company's well data, logs and documents. Administrator tools are provided to assign user access when security is important.

## Manage Your Time, Not Your Data

Analysis requires data, but if you don't know where your data is, or can't access it quickly enough, it is useless. Desktop's Esri interface enables simple navigation to areas of interest to establish data relevant to your project. Smart filters make information only a click away, moving the focus from data search to analysis. Simple queries such as searching for all the producing wells in a given area that intersect a specific formation demonstrate the power of the system.

## Desktop Delivers

Many companies embark on data management projects, but few are ever realized due to over complexity and unrealistic expectations. Geoscientists just want to know what data is available today. Desktop makes organizing your data easy; eliminating the guesswork and speculation. When you don't need a full-blown enterprise data management system, Desktop is the answer.

## Avoid Resource Waste & Expense

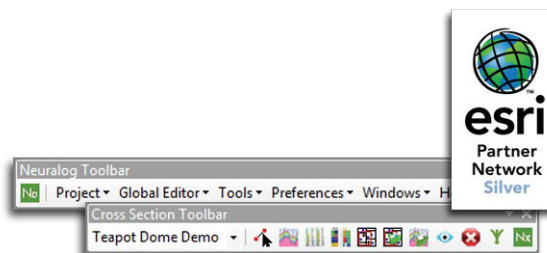
Loading data shouldn't require a rocket scientist or an army of consultants. Desktop eliminates wasted time and expense by utilizing on-screen association tools and simple batch loaders to organize your data. Desktop redefines simplicity, value and data management.

**Neuralog**  
*Turning Paper Into Petroleum*

# Neuralog Desktop

## Esri Add-In

- Connect seamlessly via toolbars
- Data visualization grids and trees
- Geological Toolbox - Interpretation, editing and data capture modules

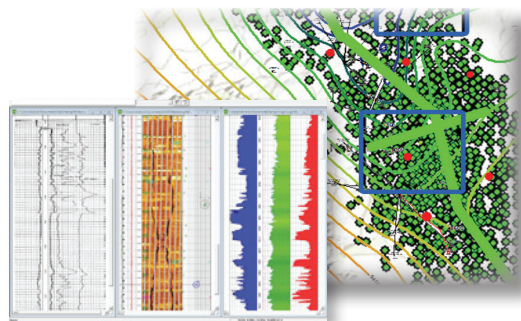


## Load & Manage

- Simple to use batch loaders
- User Tops Management
- Manage Well Related Data:
  - Logs, AFE's, core reports, production data, etc.
- Manage Area Related Data:
  - Maps, seismic data, field reports, etc.
- Supports SQL Server, SQL Express and Access databases

## Locate, Access and Export

- Locate wells and documents with simple yet powerful filters or queries
- In-application viewer allows for immediate visualization of logs
- Flexible log and well data export formats with coordinate conversion capabilities



## Neuralog Product Suite Integration

Scan, digitize, interpret and print through the simple project-based map interface.

- Store original and edited map related documents
- Quickly calibrate and digitize log images, as well as QC and edit digital log data.
- Capture map data and calculate volumetrics and reserves
- Correlate your logs, create contour maps and build cross sections

**Neuralog**  
*Turning Paper Into Petroleum*