

UNITED YACHT SALES



75' Azimut ~ 2009

Builder:	Azimut	Fuel Capacity:	1585 Gallons
Model:	Flybridge	Water Capacity:	303 Gallons
Type:	Motoryacht	Hull Material:	Fiberglass
LOA:	75'3"	Displacement:	121,254 Lbs.
Beam:	19'3"	LWL:	61'2"
		Location:	San Diego, CA
Engines:	2 x MAN 12V 1360 Common Rail V Drive / IB / Diesel / 1360 HP Each / *1,238 Hrs.		

\$2,495,000 Asking Price

THIS YACHT IS IN A TRANSFERABLE LLC



Earning your trust, one boat at a time
united@unitedyacht.com

INTRODUCTION

The Azimut 75 is the perfect four stateroom romantic Italian villa that can be in Cabo, Catalina Island, Puget Sound or other destinations of your choice. This is the perfect “mini mega yacht” with many features found on much larger yachts. She features twin 1360 hp MAN diesels that propel her to a top speed of 30 knots. Other key features include (4) staterooms & (4) ensuite heads, bow and stern thruster, matte cherry wood finish, high-tech styling, crew cabin w/head and a formal dining area with privacy doors. Her spacious aft deck, a large flybridge and easily accessible bow area make her an excellent entertaining yacht that also can provide an exclusive escape for a large family.

For More Details About This Vessel Please Visit:

<https://www.youtube.com/watch?v=xR9SBDptxpY>

https://www.youtube.com/watch?v=OQu_c6U3wts

<https://www.youtube.com/watch?v=9rzGXVB3jFI>

<https://www.youtube.com/watch?v=bLjHRQYTnmQ>



ACCOMMODATIONS

Access is gained from stern platform via twin stairway to teak aft deck. Crew quarters w/ head and twin bunk cabin also accessed via platform. Up on the aft deck is a large settee and built-in teak table. Bar/sink/refrigerator combo is starboard, plus stairway to bridge, to port. The Azimut also has full walk-around decks. Stairway to bridge, basic features include; helm with seat forward, hard top with retractable center, two large sun pads, circular settee w/ twin table and insert and BBQ/fridge/Bar/sink combo center. Also, tender mounted on bridge with davit. Back down to aft deck, salon is accessed through a stainless steel sliding door. Upon entering is an L-shaped sofa to starboard with arm chair and custom coffee table. To port is a built-in sofa with twin end table cabinets. Flat panel TV rises just behind sofa. One step up is formal dining to port w/ fully enclosable galley to starboard. There is also an exterior access door in galley. Just forward of the galley to starboard is the lower helm with dual seat. Opposite to port is a passenger dual seat. Continuing forward and down stairway is the VIP stateroom in bow. Basic stateroom features include island berth on centerline with dresser cabinets on either side plus over-size picture windows. Ensuite head with stall shower on port side of cabin. Moving aft and down through corridor is Guest Stateroom #1 to starboard. Basic features include twin berths, opening port, closet and ensuite head with "jack & jill" door. Opposite to port is Guest Stateroom #2. This stateroom also has twin berths, opening port, closet and ensuite head. Also, between these staterooms is a closet with full-size washer and dryer. Continuing aft is the full width Master Stateroom. Several of its features include; island berth on centerline, seating nook with table, oversized picture windows, large dresser and closet. You will also find a full beam ensuite head with twin sinks and sit-down stall shower.

MAIN SALON

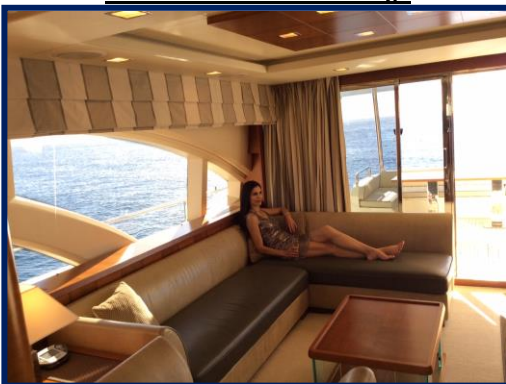
- Bar cabinet
- Panasonic 42" flat panel television (retracts)
- Direct TV satellite receiver
- Marantz AV surround receiver SR6001
HDMI XM satellite radio
- Denon DVD audio-video/super audio CD receiver/player - model: 1930 iPod home dock Panasonic phone system KX6T333
- Air conditioning control unit (2) Table lamps
- Matte cherry wood finish
- Berber carpeting
- Custom decor paneled wood accents
- Oversized designer picture windows
- L-shaped sofa (starboard) with coffee table
- Sofa (port) with end table/cabinets
- Arm chair
- Halogen ceiling lights
- Built in shelves



Salon – Manufacturer Image



Salon Looking Forward



L Shaped Sofa



Salon Looking Aft

Earning your trust, one boat at a time
united@unitedyacht.com

DINING AREA

- Custom glass dining table with (8) designer chairs
- Marble floor
- Custom drawers for settings
- Alessi china and crystal (10 settings)
- Galley access counter
- Designer door divider to helm



Dining - Manufacturer Image



Custom Drawers for Settings



China and Crystal for 10 Settings

GALLEY

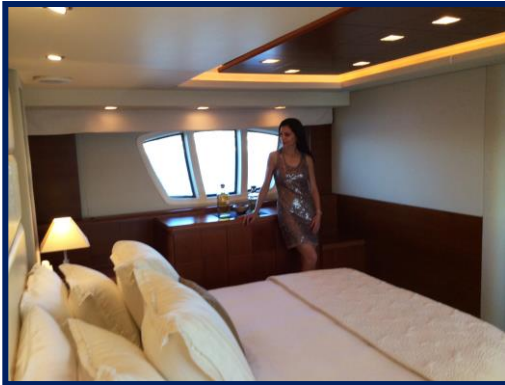


Galley - Manufacturer Image

- Stainless steel sink with Franke faucet
- Classic ISE incinerator/trash compactor
- Miele 4-burner touch top stove
- Miele exhaust fan
- GE under counter microwave/convection oven
- Gaggenau dishwasher
- Exterior access door
- A/C control unit
- Overhead cabinets
- Under counter large sliding drawers
- Full enclosure capability Granite counter tops
- Amana full size double door fridge with icemaker/water door dispenser

MASTER STATEROOM

- Custom Matte cherry finish
- Full width suite
- Halogen ceiling lights
- Indirect lighting in ceiling
- Berber carpeting
- Centerline walk-around double berth on matte finish base w/drawers
- Twin nightstands w/lamps
- Dresser w/cabinets
- Window seating nook w/table
- A/C Window blinds
- (3) Vertical picture windows, each side Opening porthole (stbd.)
- Control unit
- Audio visual cabinet
- Sharp 32" flat panel television (wall mount)
- Direct TV satellite receiver MX 3000 Dynamic entertainment system w/remote
- iPod home dock
- Home theater w/5 speakers & subwoofer
- Mini refrigerator
- Mini bar
- Wall safe



Master Port



Starboard View



Port Window



Centerline Berth

ENSUITE HEAD (MASTER)



Manufacturer Image

- Full beam
- Matte cherry wood finish
- Twin sinks in Fossile Marrone marble counter
- Matte cherry floor w/Fossile Marrone marble inlay
- Tecma electric jet flush head
- Rainshower stall shower with seat & side jets
- Designer faucets Opening porthole

Earning your trust, one boat at a time
united@unitedyacht.com

VIP STATEROOM (FORWARD)



Manufacturer Image

- Matte cherry wood finish throughout
- Walk-around island berth on matte finish base w/drawers
- (2) Nightstands w/drawers
- (2) Wall mounted reading lamps
- (2) Cabinets outboard sides
- (9) Ceiling halogen lamps
- (2) Picture windows on both hull sides
- Ceiling hatch
- Window blinds
- Berber carpeting
- Cedar lined hanging locker with drawers
- A/C control unit
- Custom bedding
- Central vacuum
- Samsung 19" flat panel television NAD DVD receiver L54 w/universal remote
- Direct TV satellite receiver FM CD stereo w/surround sound (2) Kevlar speakers

ENSUITE HEAD (VIP)

- Tecma electric jet flush head
- Designer accented faucets/handles
- Granite counter w/sink
- Rainshower stall w/side jets
- Matte cherry floor

GUEST STATEROOM #1

- Matte cherry designer
- Twin berths on bases w/drawers
- Table between berths w/twin reading lamps mounted above
- Cedar lined closet w/drawers
- Opening port
- (8) Halogen ceiling lights
- Mood lighting
- Central vacuum
- Phillips 15" flat panel TV DirectTV satellite receiver
- Boss BV 6000 FM/CD/DVD/MP3 playback receiver
- (2) Kevlar speakers



Manufacturer Image

ENSUITE HEAD

- Tecma electric jet flush head
- Rainshower stall with side jets
- Granite counter & sink
- Opening port
- Cherry wood floor
- Stainless steel fixtures
- Accented trim

GUEST STATEROOM #2

- Matte cherry wood designer finish
- Berber carpeting
- Twin berths - bases with drawers
- Bedside table/cabinet
- Twin wall mounted reading lamps
- Mirrored headboards
- Opening port w/blinds
- (8) Ceiling lights
- Mood lighting
- Boss BV 6000 FM/CD/DVD/MP3 playback receiver
- Direct TV satellite receiver
- Phillips 15" flat panel television
- (2) Kevlar speakers
- Cedar lined closet w/drawers
- Central vacuum

ENSUITE HEAD

- Corridor access door
- Tecma electric jet flush head
- Granite counter & sink
- Stainless steel fixtures
- Opening port
- Rainshower stall w/extra side jets
- Matte cherry floor
- Cherry wood accents

CREW QUARTERS

- Single berth outboard (stbd)
- Closet Ceiling lights
- Opening porthole
- Drawer under berth
- Pioneer CD/MP3 player

Crew head

- sink, shower and Tecma jet flush toilet

WHEELHOUSE

- Electrical panel Instrument console in leather
- Cherrywood chart top portside
- Leather helm seat
- Leather guest seat
- Privacy sliding door from dining/galley area
- Cherrywood steering wheel



Manufacturer Image

NAVIGATION & ELECTRONICS

Lower Station

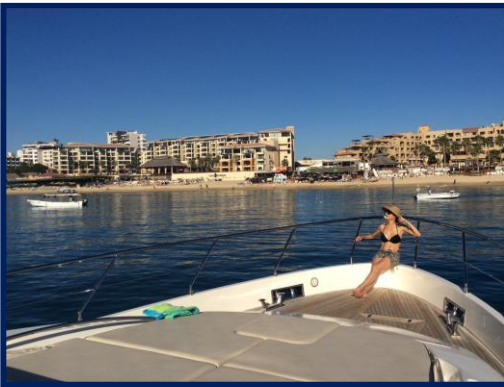
- Garmin GPS map 7215
- Intercom control panel (3 stations)
- MAN Synchro command helm
MAN touch panel starters MM-CLC 6.3
- Furuno GPS WAAS/navigator
- Furuno RD 30 depth sounder
- Jabsco searchlight w/remote
- VEI computer w/monitor
- Nobletech map system
- Cameras Video playback
- Proface digital systems panel
- Simrad AP25 autopilot
- ICOM VHF radio
- Windlass control
- Systems monitors

Bridge station



- MAN hydraulic controls
- Simrad AP26 autopilot
- VEI computer monitor
- Garmin GPS map 7215
- ICOM VHF handheld radio

DECK



Bow



Foredeck Sunpad



Side Deck

FLYBRIDGE

- C-shaped settee with split table and insert
- Hardtop w/retractable insert
- (2) Sun pads
- Bar cabinet w/BBQ/Sink/Refrigerator/icemaker
- Tinted windshield
- Helm station w/double seat
- Fusion radio / iPod dock
- Poly Planer MP3 iPod Satellite radio adaptor
- Opacmare electric/hydraulic davit
- Novurania 12' tender w/Evinrude 40 HP outboard



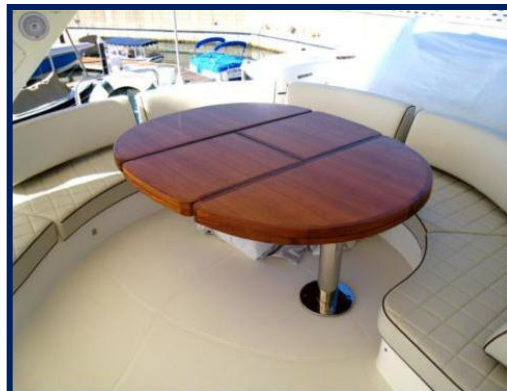
Helm Station w/ Tinted Windshield



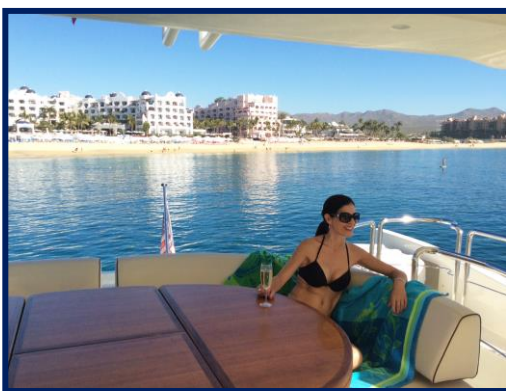
Sunpad



C Shaped Settee w/ Table



Split Table Insert



Flybridge Seating



Bar Cabinet w/ BBQ

AFT DECK



U Shaped Settee w/ Cherry Wood Table



Aft Deck Controls

- U-shaped built-in settee w/cherry wood table & stainless steel base
- Bar cabinet w/sink, refrigerator drawer, trash bin
- Natural teak finished deck walk-around Swim platform
- (2) Side boarding doors
- Raritan icemaker
- (2) Access stairways from platform
- Electric/hydraulic passerelle portside
- Shore power water connections placed on transom
- Custom stainless steel pillars for added flybridge reinforcement
- Secondary engine access hatch
- (2) Lofrans 1200W, 24V mooring winches
- Stainless steel raised rails
- Bridge access stairway
- Halogen ceiling lamps



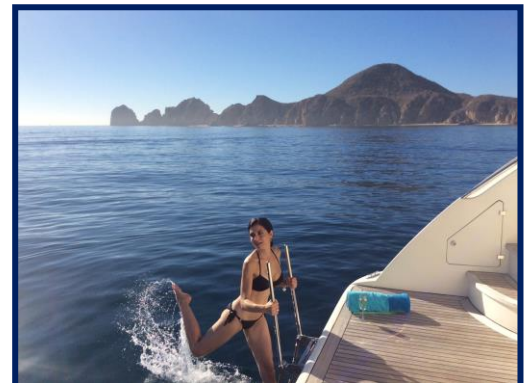
Side Boarding Doors



Natural Teak Swim Platform



Swim Platform



Swim Ladder

ADDITIONAL EQUIPMENT



- Novurania 12' tender w/Evinrude 40 HP outboard
- Covers for sun pad cushions
- MN Marine speakers on bow sun pad
- Black mesh covers windshield side panels

ELECTRICAL EQUIPMENT

- (2) Kohler 23 kw generators w/sound shields (Port – 1,092 / Stbd. – 1,095)
- 24V Electrical system
- 220V Electrical system AC/DC
- Grounding system 12 V DC Starter
- (2) 220Volt shore inlets, transom mounted
- Watermaker Incorporated watermaker (30 gph)
- Central vacuum
- Group of 24V gel batteries
- Group of 24V leaded batteries for main engine starter
- Group of 12V leaded batteries for generator starter
- One 24V/100A automatic Mastervolt battery charger for service & main engine starter battery
- One 12V/25A automatic Mastervolt battery charger for generator starter battery 24V
- Electrical bilge pump 24V Automatic/electrical bilge pumps; engine room & cabins
- High water alarms

ENGINE DETAILS & MECHANICAL EQUIPMENT

- (2) MAN 1360 V-12 1360 HP Common Rail (1,000 hours)
- Twin disc transmissions
- Marinox steel shafts
- Nibral alloy propellers
- Aisi 316 steel trim tabs
- (3) Cruisair A/C compressors
- (2) Black water tanks (108 gal total)
- Centralized bilge system
- Remote mobile helm w/cord
- Mobile stern control station with cable
- (10) Cruisair air handlers
- Hydraulic system bow and stern thruster
- Bow windlass 2000W
- 24V Centralized fire extinguishing system in engine room
- (2) Gray water tanks (143 gal total)

BROKER'S REMARKS

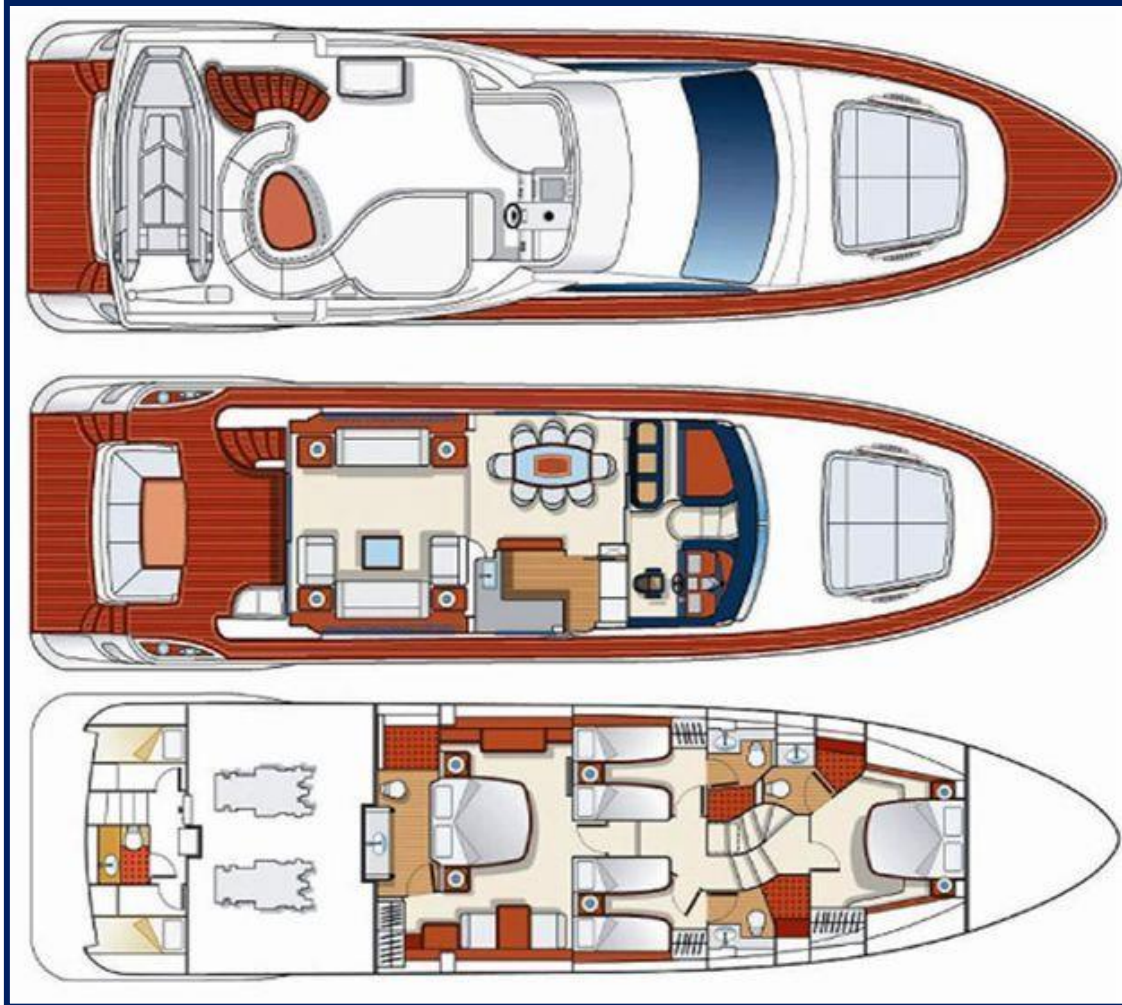
The Azimut 75 is the perfect "mini mega yacht" with many features found on much larger yachts. She features twin 1360 hp MAN diesels that propel her to a top speed of 30 knots. Other key features include (4) staterooms & (4) ensuite heads, bow and stern thruster, matte cherry wood finish, high-tech styling, crew cabin w/head and a formal dining area with privacy doors. Her spacious aft deck, a large flybridge and easily accessible bow area make her an excellent entertaining yacht that also can provide an exclusive escape for a large family. Work Completed 2013 Haul out, bottom paint, props tuned, shafts removed, balanced, and new coupler sockets. Replaced shaft seals and bearings. New prop speed on props and shafts. Air conditioning system cleaned, acid flush, and replace seawater pump, adjust gas levels, balance air flow. New sun pads on flybridge and bow deck. Recovered sofas. Installed new AIS system. 1,000 hour MAN engine service. Complete cooling system service. Rebuilt seawater pumps. Heat exchangers removed and cleaned. Hoses replaced. Belts replaced. Coolant changed, oil and filters changed. Fuel filters cleaned and changed. Gearbox oil coolers cleaned, oil and filter changed. Generators serviced. Removed heat exchangers cleaned and replaced. New seawater pumps, hoses and new exhaust elbows. Belts replaced. Coolant changed and oil and filters and changed. Fuel filters changed.



EXCLUSIONS

Potential purchasers should assume that items on the vessel at the time of viewing, but not specifically listed on this sheet, are not included with the sale of the yacht. These specifications are believed to be true and correct but cannot be guaranteed.

LAYOUT DRAWINGS



MECHANICAL DISCLAIMER

* Engine hours are as of the date of the original listing and are a representation of what the listing broker is told by the owner and/or actual reading of the engine hour meters. The broker cannot guarantee the true hours. It is the responsibility of the purchaser and/or his agent to verify engine hours, warranties implied or otherwise and major overhauls as well as all other representations noted on the listing brochure.

DISCLAIMER

The company offers the details of this vessel in good faith but cannot guarantee or warrant the accuracy of this information nor warrant the condition of the vessel. A buyer should instruct his agents, or his surveyors, to investigate such details as the buyer desires validated. This vessel is offered subject to prior sale, price change or withdrawal without notice.