



HSM Surveyor™

Take the Guesswork Out of HSM Monitoring

Hardware Security Modules (HSMs) are an essential but expensive component in encryption and key management for enterprises. Because of the increased sophistication of organized attacks, many enterprises build their encryption and key management processes on a foundation of HSMs. These devices offer the highest degree of key protection integrity with FIPS 140-2, Level II or higher certifications. However, HSMs often do not provide the visibility required to manage them efficiently, which is critical to both diagnostics and resource planning.

Overview

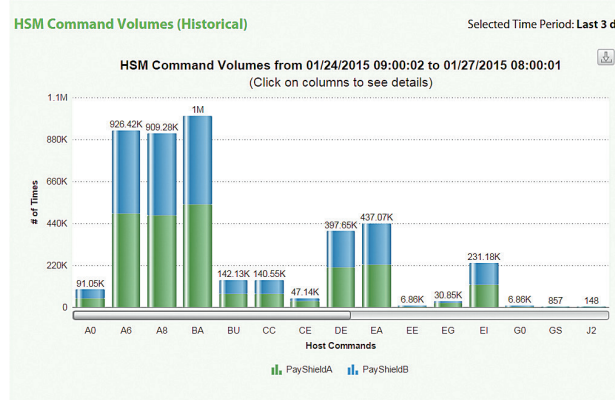
HSM Surveyor is an enterprise application for monitoring the health and performance of HSMs. It is designed to provide real-time and historical data necessary for HSM network analysis. A disruption or failure of an HSM can bring transaction processing to a halt and immediately impact productivity, SLAs and the bottom line. HSM Surveyor can help eliminate these costly disruptions and failures by providing enterprises the ability to proactively identify performance issues before they become critical downtime events.

The function of HSM Surveyor is to monitor both individual HSMs and pools of HSMs within an enterprise HSM estate. Reports on pools of HSMs present a composite of the activities and capacities of each HSM or of the entire HSM pool. Alerts can be triggered by a variety of events such as HSM unresponsiveness, HSM error codes, and data collection errors. The insight into the HSM estate provided by HSM Surveyor is invaluable for performance monitoring and resource planning.

Primary Reporting Features

HSM Surveyor supports both predefined and ad hoc report generation. There are three primary kinds of reporting information provided.

- **Communications Diagnostics:**
General health information about the HSM communication or HSM estate including status of host ports, network connectivity, etc.
- **Performance & Capacity:**
Graphical and statistical information about HSM utilization for individual or pools of HSMs.
- **Security:**
Proactive alerts notify authorized subscribers via email or SMS messages when suspicious events occur.



This report shows historical command volumes for each HSM monitored, allowing enterprises to make more efficient use of their HSM investment.

HSM Data Collection

HSM health and summary data is collected and retained within the Data Collection Server for subsequent reporting. The frequency of data collection is user defined and can be scheduled for automatic review of the HSM's health status, resulting in proactive alerts of exceptional conditions.

Alerts and Logs

Notifications are delivered to an authorized list of recipients via email or SMS messages. These notifications can be triggered by a variety of events such as HSM unresponsiveness, HSM error codes, and data collection errors.

A secure Data Collection Log captures all notification events and all user actions are recorded in the Product Administration Audit Log. Extensive filtering options narrow the focus to selected users, locations and exception types.

Configurable Reports

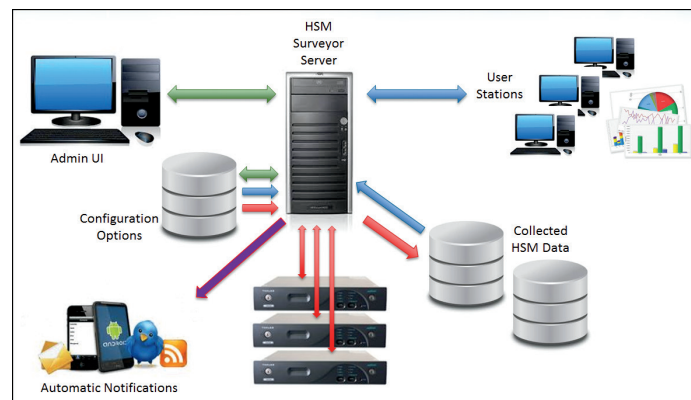
Flexible reporting capabilities allow users and management to make informed decisions regarding the HSM deployment and health in their enterprise. Reports can be configured to show:

- One HSM or pools of HSMs
- Current HSM load
- Historical data range
- Specific geographical locations of installed HSMs
- Ad hoc reports for unique queries

Managing the Enterprise

The capabilities of HSM Surveyor are managed by a security scheme where users are authenticated and provided access rights by specific function. Product Administration capabilities are presented to authorized Administrators through an intuitive menu and address:

- User identities, authorities and access security levels
- Validation of authorized user IP addresses
- Logical path to data storage
- Descriptions of each HSM in the HSM Estate
- Individual or group reporting on HSMs



Technical Specifications

- Microsoft Windows 7 or Windows Server 2008 R2
- Google Chrome or Mozilla Firefox browser
- MariaDB 10.0.14(win32) or MySQL 5.6.21(win32) database server
- Python 2.7 or 3.4
- Thales payShield HSMs

FREE 30-DAY TRIAL

Download a fully functional version of HSM Surveyor at www.PrimeFactors.com.

During your 30-day trial, experience the personalized support that separates Prime Factors from the competition.