

INTRODUCING

# **CYBEX** CARE

ASSET MANAGEMENT AND SERVICE WHEEL

Asset management solutions for cardio, simplified.







## Smarter Asset Management for Cardio

---

For over 45 years, we've combined customer insight with the latest technology to help customers like you succeed.

This year, we're introducing Cybex Care, a web-based asset management system that wirelessly collects cardio data, then uses it to help save you money, reduce equipment downtime and manage machine usage. This truly useful feature will be available on all Cybex 500, 600 and 700 Cardio Series.

We're also introducing Service Wheel, an easy to engage third wheel that allows you to rotate, relocate, maintain, and clean your treadmills – simply, safely and quickly.

**CYBEX** CARE

Available on the 500, 600 and 700 Cardio Series.

# Cybex Care Benefits

---

## Improve Member Experience

By measuring usage trends you can ensure that your equipment is optimally positioned in the gym, in top condition, and always available to exceed your members' needs.

## Reduce Downtime & Optimize Performance

With advanced cardio insight, keep your equipment running perfectly and prevent disruptions before they occur.

## Streamline Maintenance & Service

Determine an optimal cleaning schedule. Train staff through instructional videos and task scheduling. Predict service needs and reduce service time.

## Lower Cost of Ownership

Through regularly scheduled maintenance and the rotation of low and high use machines, Cybex Care will help you extend the life of your equipment.

## Higher Standards

New standard features complement Cybex Care, making our premier cardio equipment even better: power cord retention hooks, side power switches and ez-grip coax cables.

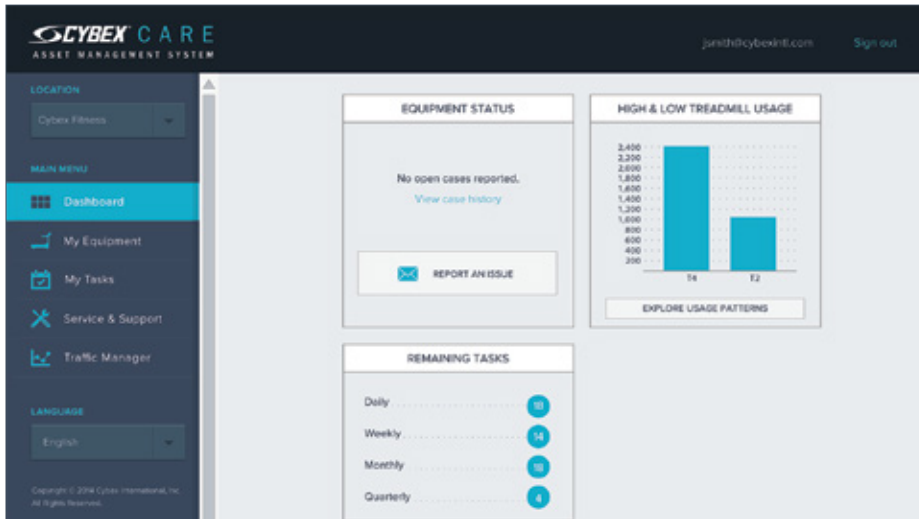






## How It Works

It all starts with Cybex Care wirelessly collecting data from your cardio equipment. The data is then transmitted to a personal web portal where it's translated into clear and useful information about your facility. From any Internet connection, you can then manage tasks, optimize your operation, train your staff, streamline service – and get real results.



## DASHBOARD

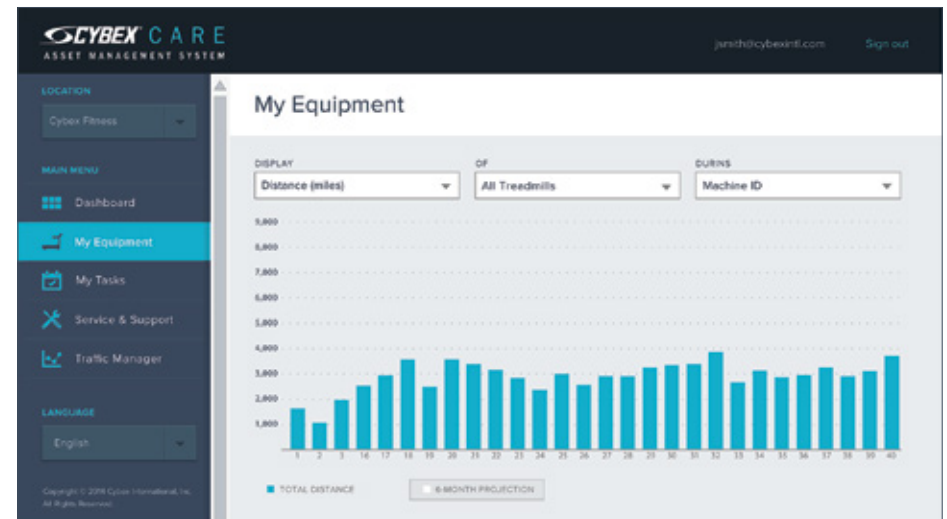
# See It All in an Instant

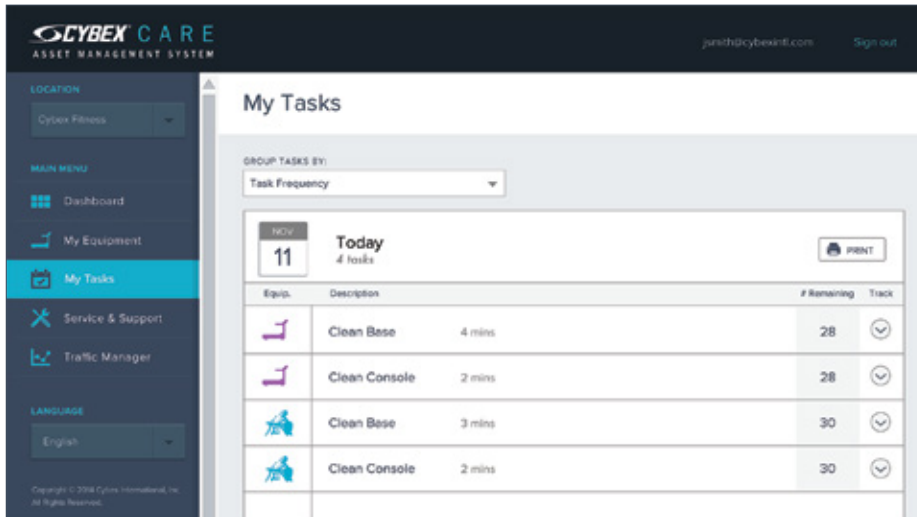
Managing your equipment has never been so simple. From your personal dashboard, keep track of equipment case status, usage trends and upcoming tasks.

## MY EQUIPMENT

# Immediate Insight

View all of your asset-enabled cardio equipment and get extensive insight on machine usage and member preferences. See data as “miles run” or “hours used.” Even project six-month patterns. Use this information to rotate low and high use equipment, keep your equipment in top condition, and ensure that your members are getting the best workout experiences possible.





## MY TASKS

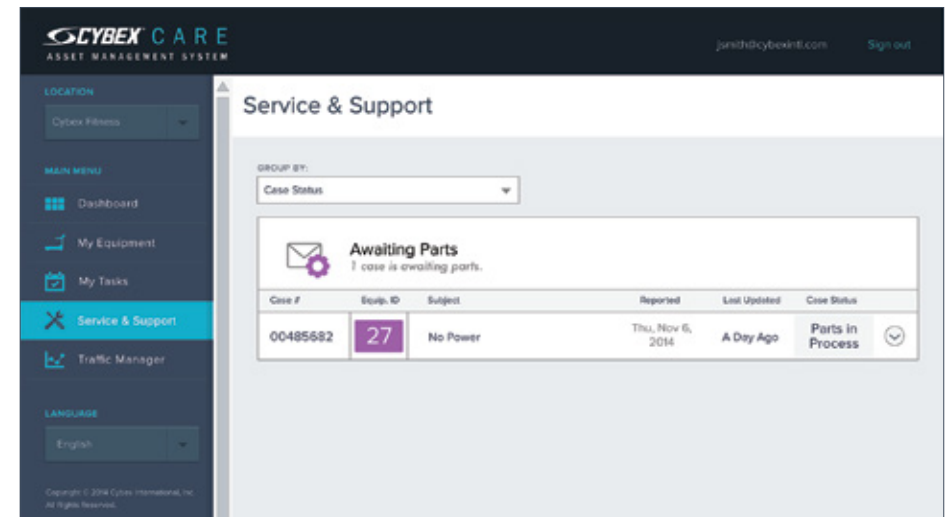
# Your Cardio To-Do List

Never forget a maintenance task again. Extend the life of your equipment. Train staff. My Tasks offers you instructions, how-to videos and maintenance schedules to reduce downtime and proactively manage maintenance tasks.

## SERVICE & SUPPORT

# Help is Just a Few Clicks Away

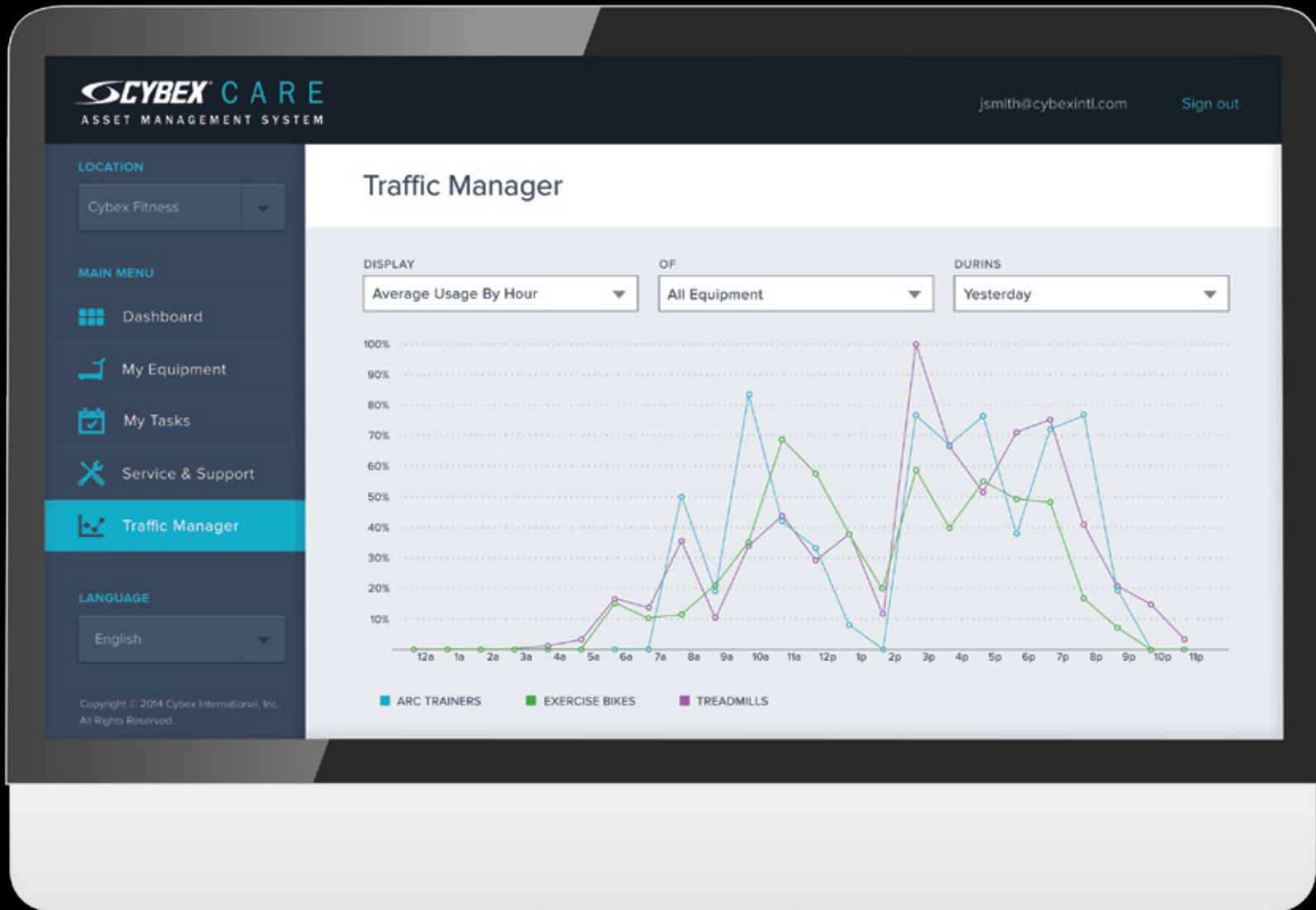
Contact customer support. Streamline repairs. Reduce service time. The Service feature allows you to enter and track service cases, making it all easier than ever.





# Understand Traffic

Which machines do your members prefer? How can you get your low-use machines back in action? Master gym traffic with a clear visual representation of equipment usage trends over time.







## SERVICE WHEEL

# A Clever Little Wheel

Treadmills are the most widely used cardio machines out there. They're also the most difficult to lift and the hardest to maintain. In 2015, we're changing that forever with an intuitive third wheel that allows one person to do the work of two.

With the help of Service Wheel, you can rotate, relocate, maintain, and clean your treadmills with ease – saving yourself significant money and drastically reducing downtime.

---

## Three Simple Steps, One Person



Engage the wheel



Push from the handlebars



Move the treadmill in seconds flat



**WORLD HEADQUARTERS**

10 Trotter Drive  
Medway, MA 02053 USA  
T + 1.508.533.4300  
F + 1.508.533.5500  
cybexintl.com

**CYBEX INTERNATIONAL UK LTD**

Premier House  
Beveridge Lane  
Bardon Hill  
Coalville, LE67 1TB UK  
T + 44.845.606.0228  
F + 44.845.606.0227

©2015, Cybex International, All rights reserved.  
Cybex Care Brochure.

Cybex Products are Designed & Built in America.

