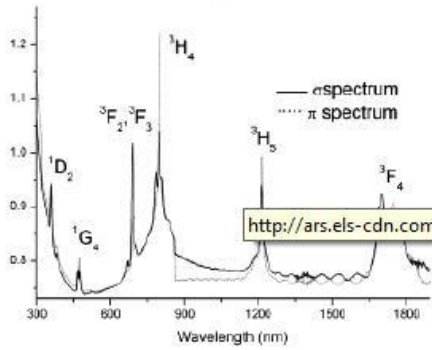
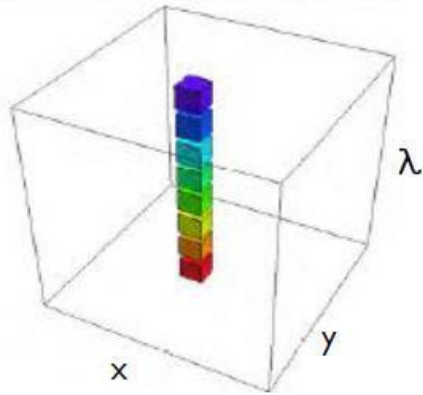


Miniaturized hyperspectral imaging cameras

Miniaturized hyperspectral imaging cameras

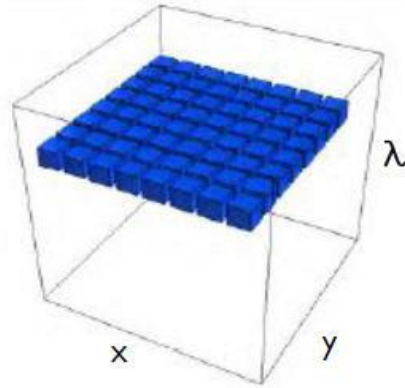
Hyper spectral imaging (HSI)

Spectrometer

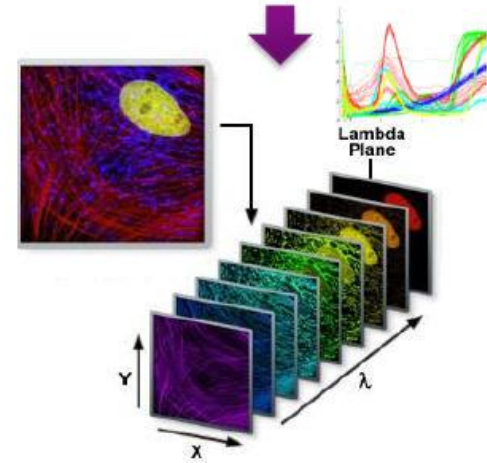
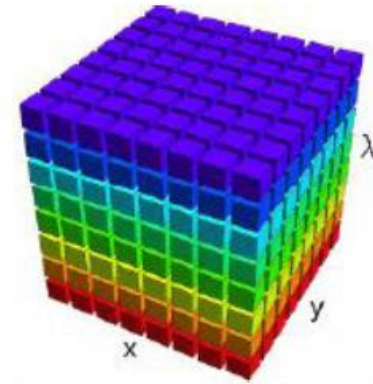


<http://ars.els-cdn.com/content/image/1-s2.0-S0038109805002346-gr4.gif>

Color camera

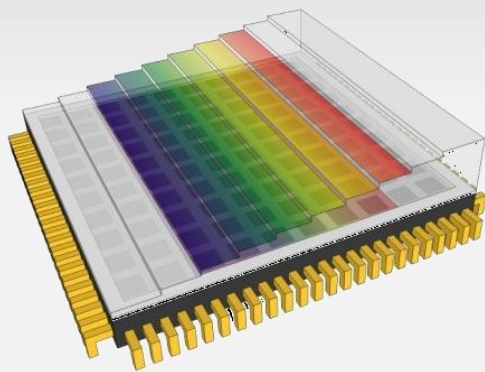


Hyperspectral camera



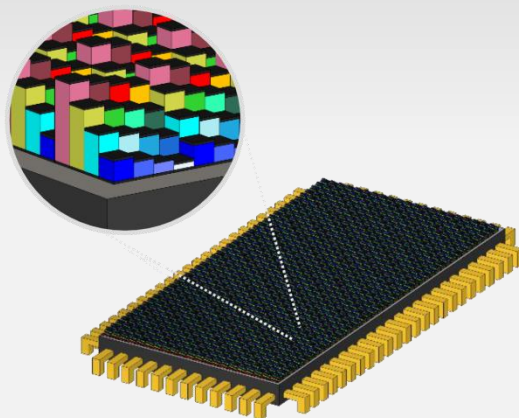
filter layouts

Linescan



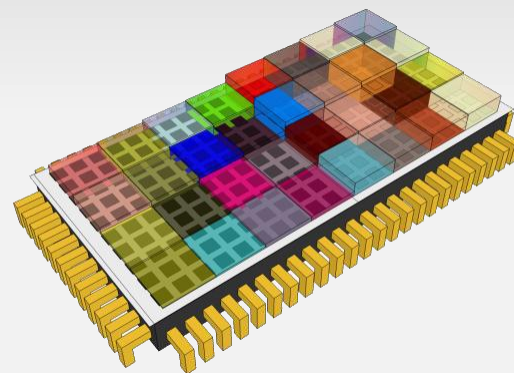
'wedge' design
100 bands
600 - 1000 nm

Snapshot Mosaic



'per-pixel' design
4x4: 470 - 630 nm
5x5: 600 - 1000 nm

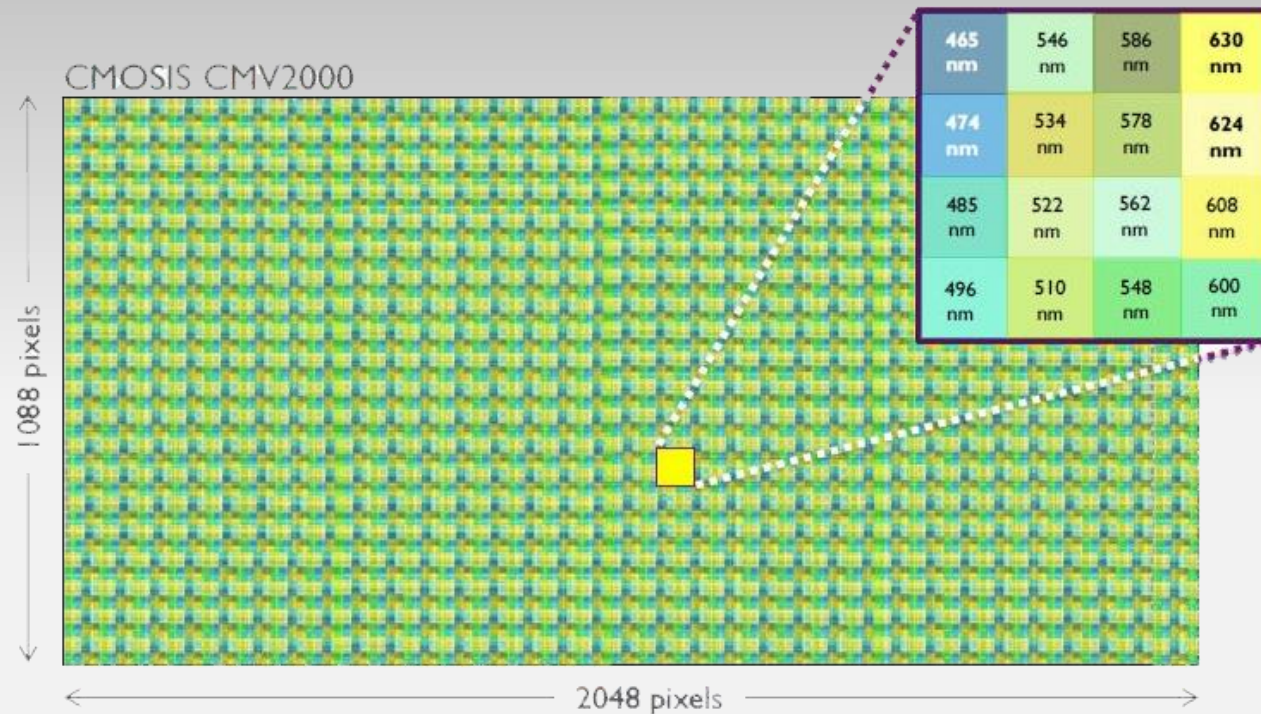
Snapshot Tiled



'area' design
32 bands
600 - 1000 nm

Snapshot Mosaic (imec)

XIMEA camera MQ022HG-IM-SM4X4-470-620

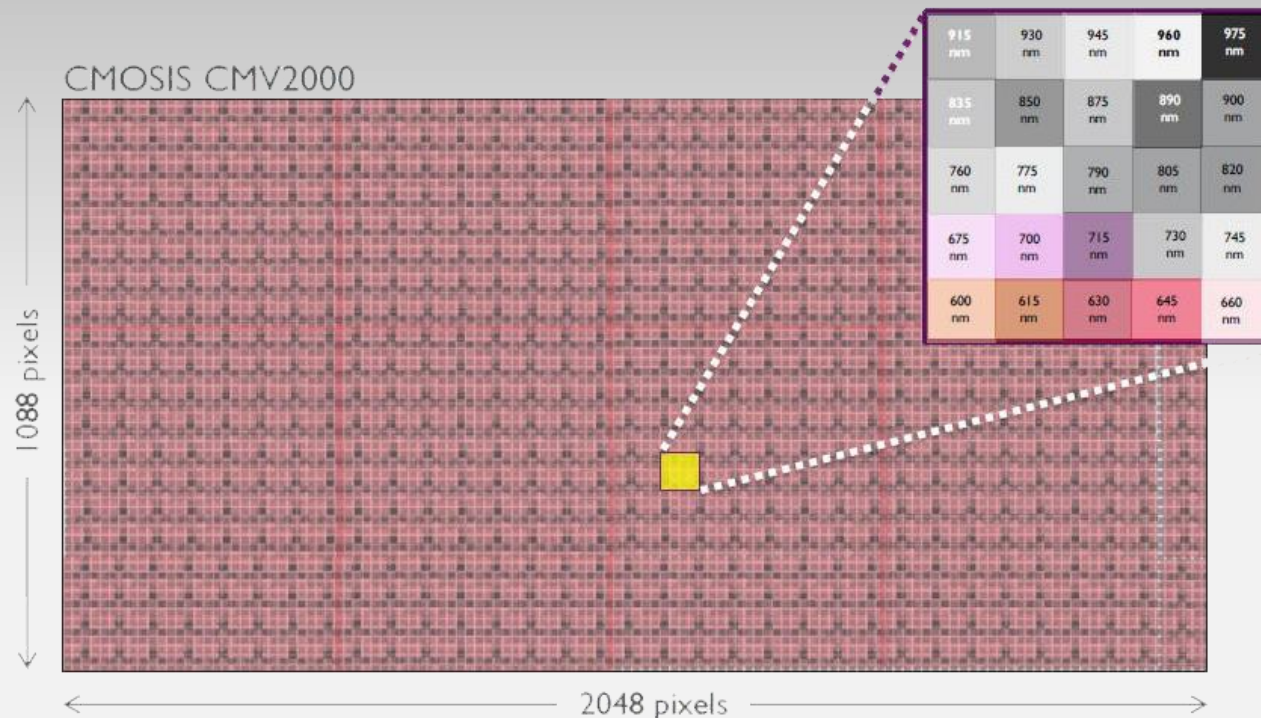


Key specification

- Spectral resolution: 4x4 mosaic = 16 bands in 465-630nm
- FWHM: ~ 15nm
- Spatial resolution: from 512x272 (per band)
- Speed: up to 170 data-cubes / s (full sensor frame)

Snapshot Mosaic (imec)

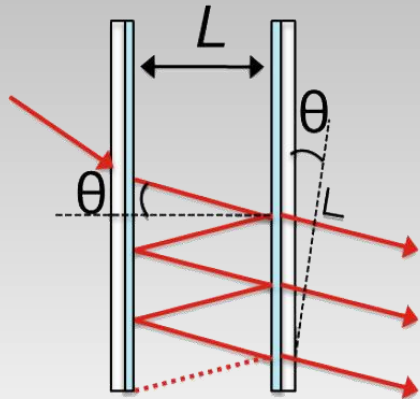
XIMEA camera MQ022HG-IM-SM5X5-600-1000



Key specification

- Spectral resolution: 5x5 mosaic = 25 bands in 600-975nm
- FWHM: ~ 16nm
- Spatial resolution: from 409x217 (per band)
- Speed: up to 170 data-cubes / s (full sensor frame)

Fabry-Perot interference filter



Transmitted wavelength: $k\lambda=2nL\cos\theta$

A filter designed for a specific wavelength λ will also transmit several other wavelengths, e.g. $\lambda/2$ and the wavelength of the second order harmonics (on snapshot mosaic sensors).

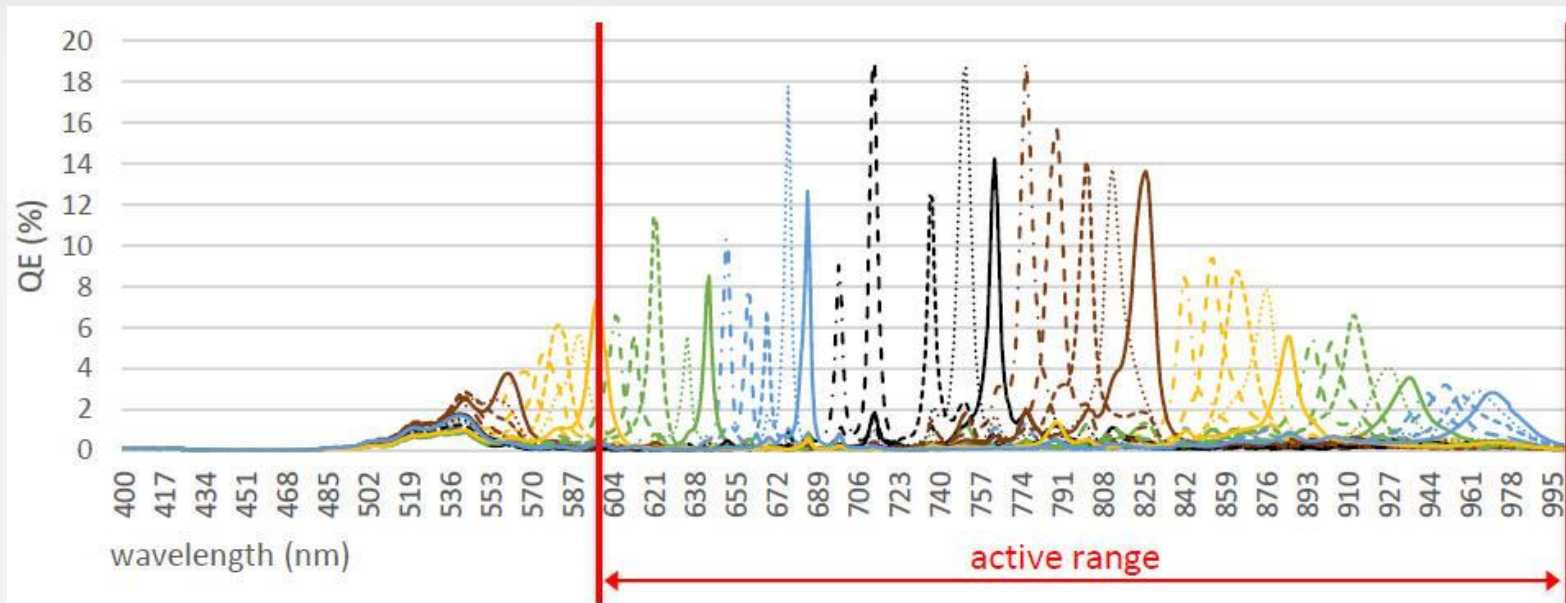
The sensor is designed to work in a specific spectral range (active range).

Wavelength ranges outside of the active range must be cut off by bandpass filters.

Bandpass filters (SM 5x5)

Bands with first order response at 840 – 1000 nm have a second order response at 600-675 nm.

Band pass filters to retain second order peaks: 600-875 nm or 675-975 nm
Band pass filter for the full active range: 600-975 nm

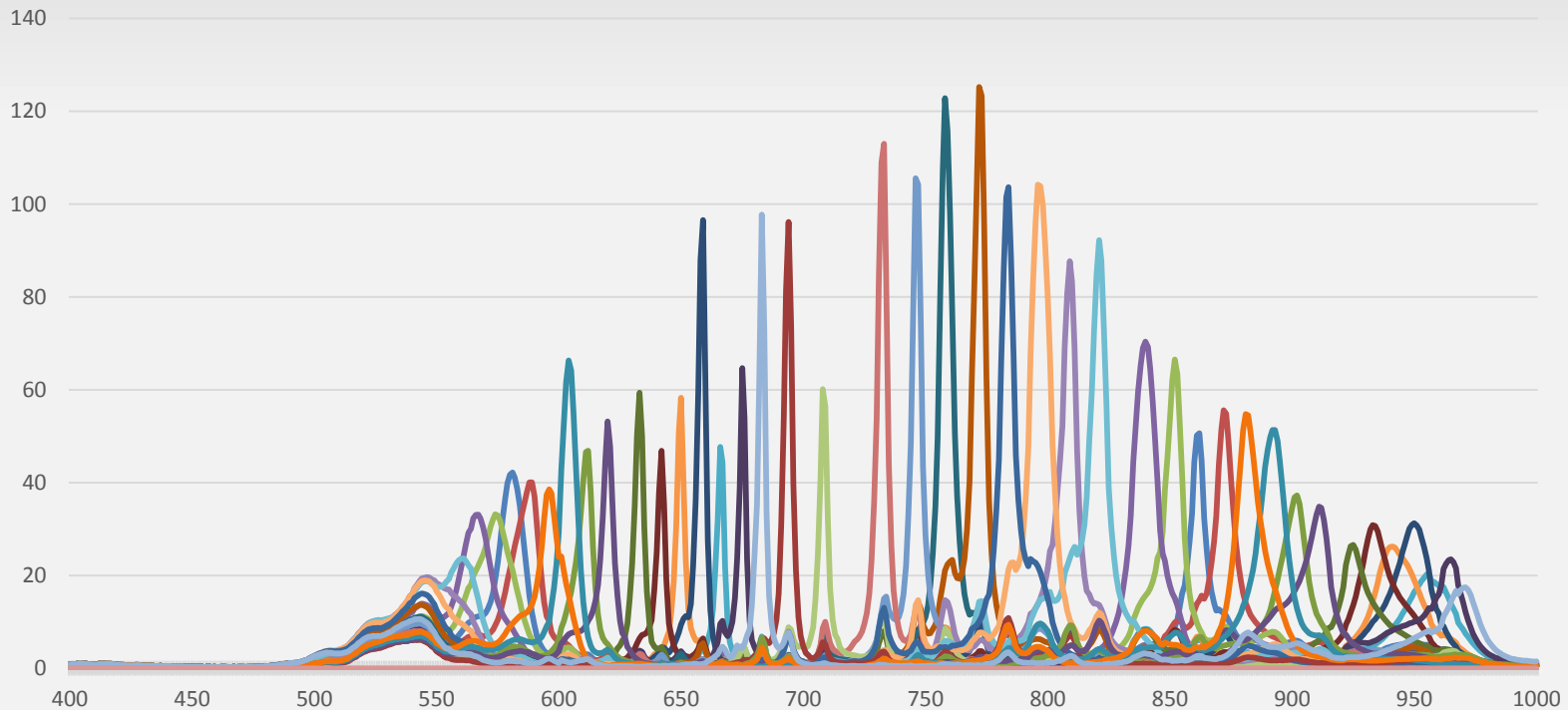


Calibration data

Each sensor is calibrated individually!

The complete calibration data is delivered (and stored to the XIMEA cameras).

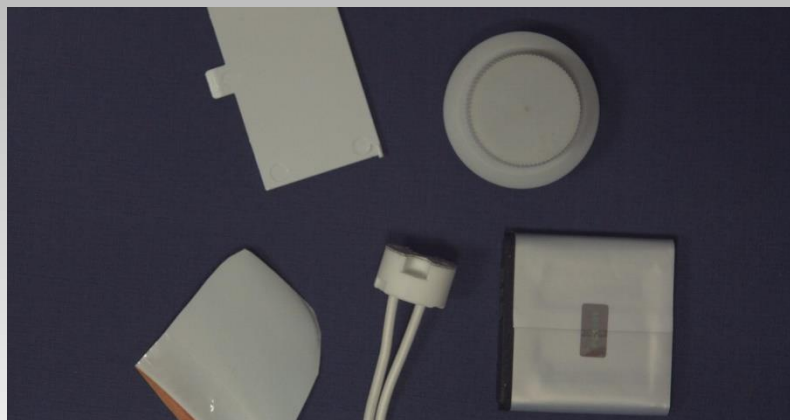
MQ022HG-IM-SM5X5-600-1000, SerNr: 09580554 - calibration data 400-1000 nm



HSI – industrial applications

- Medical Imaging
- Microscopy and Endoscopy
- Precision Agriculture
- Remote Sensing
- Mineralogy
- Environmental Monitoring
- Life science instrumentation
- Optical sorting
- Food inspection

Waste sorting white plastics

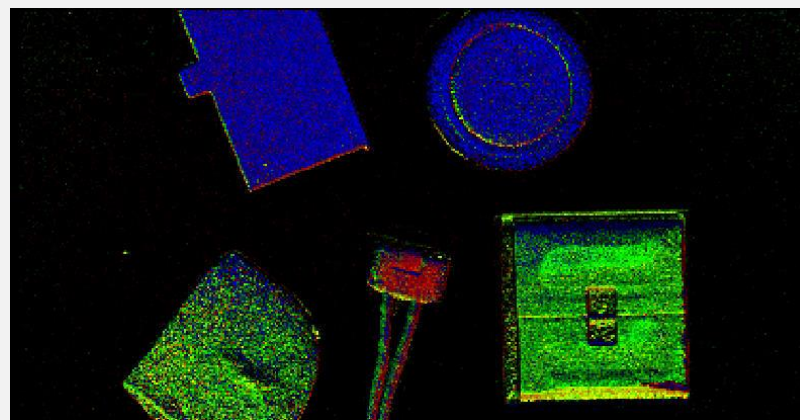


Color image
Camera MQ022CG-CM
CMOSIS CMV2000

5x5 snapshot mosaic, halogen lamp illumination, filter set 675 – 975 nm



NIR (intensity)



HSI separated

Food / organic sorting green leafs



Color image
Camera MQ022CG-CM
CMOSIS CMV2000

5x5 snapshot mosaic, halogen lamp illumination, filter set 675 – 975 nm



NIR (intensity)

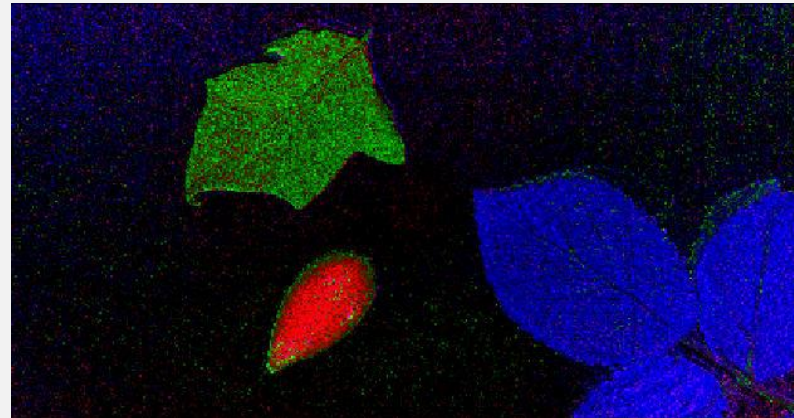


HSI separated

5x5 snapshot mosaic, halogen lamp illumination, filter set 675 – 975 nm



NIR (intensity)



HSI separated

Miniaturization

Miniaturized hyperspectral imaging cameras

**kompakteste
Hyperspektral
Kameras**

ximea

xiSpec
26 x 26 x 30 mm, 31g
16 bis 150 Hyperspektral-Bänder
170 HSI-Cubes/Sek.



Linescan • Mosaic • Tiled

basieren auf den der kleinsten und
leichtesten USB3.0 Kameraserie

xiQ

Software environments

Support for

Windows



Linux



Mac-OS

Compatible with

USB3-Vision



GenICam GenTL



XIMEA API / SDK



Running on

Intel x86 / x64

ARM (Cortex A9 +)

embedded platforms



perception park, Graz, Austria

www.perception-park.com

- Chemical Color Imaging
- integrates with existing image processing systems
- short development time



NICTA, Canberra, Australia

www.scyllarus.com

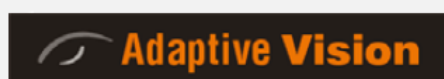
- powerful, full featured hyperspectral imaging engine
- automatic recovery of scene illuminant
- available for license as C++ API, standalone application and Matlab toolbox

Miniaturized hyperspectral imaging cameras

Supported software libraries

Extremely compatible

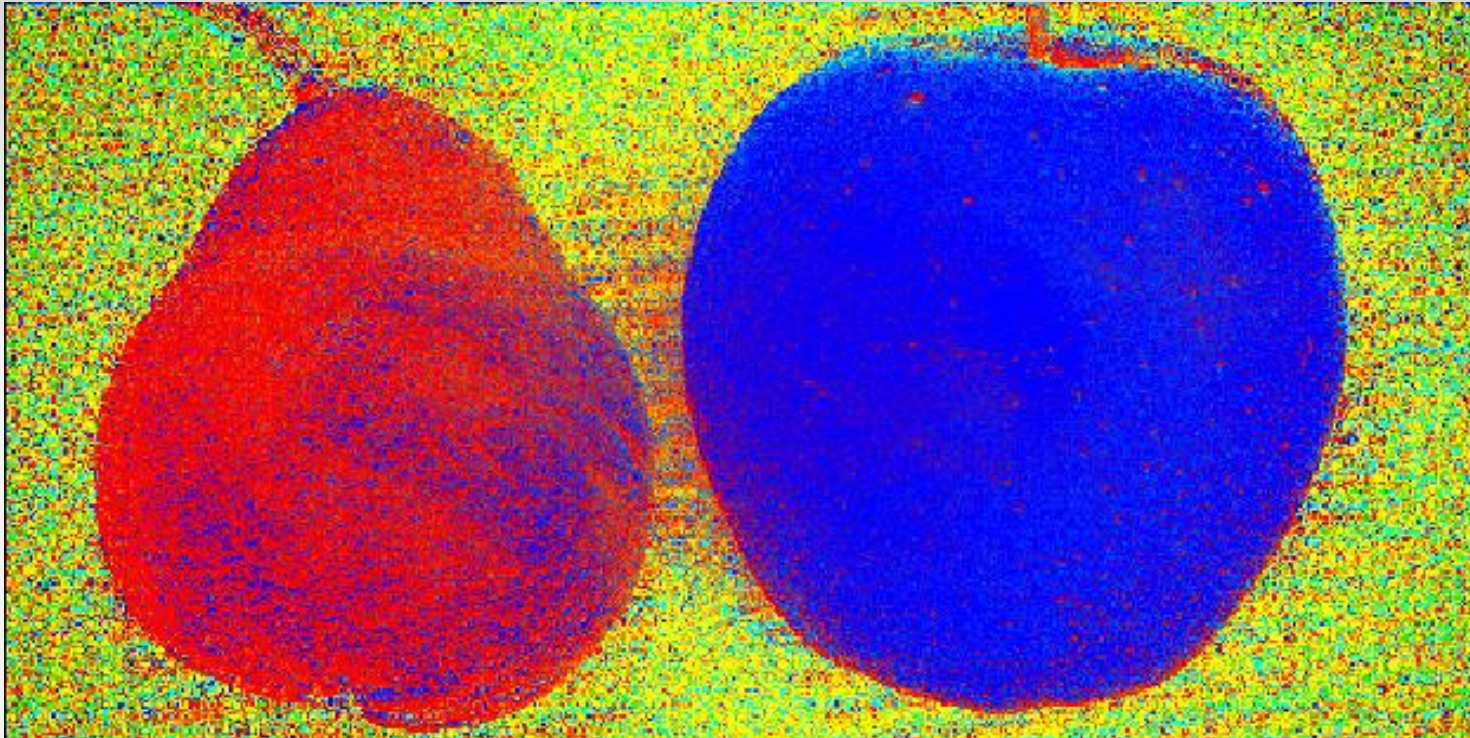
All trademarks are the property of their respective holders, used with permission. All other rights reserved.



compatible with more than 30 popular machine vision libraries...

Yes, we can ...

... compare apples with pears !



4x4 snapshot mosaic, halogen lamp illumination, filter set 450 – 650 nm

Thank you for your attention