



HARVESTER PORTABLE



Defensible Automated E-Discovery
Collection

**Harvester 4.0
has Arrived!!**

SEARCH AND COLLECT DISCOVERABLE DOCUMENTS AND EMAIL

Incomplete and undocumented electronic discovery collections occur every day. The result of mishandling these files can be costly to both the client and their legal counsel. Unlike other offerings, Pinpoint Labs doesn't require you to purchase additional products or services in order to facilitate a collection. Data collected with Harvester can be accessed with other popular E-Discovery tools. A simple flat rate pricing structure allows you to use the tools as often as you need without worrying about hidden fees.

HARVESTER FEATURES

- ▶ Early Data Assessment (EDA) Reports
- ▶ Identifies non-searchable/encrypted files
- ▶ DeNIST and Dedupe
- ▶ Multi-threaded
- ▶ Set expired licenses for Harvester Portable using Portable License Manager (PLM)
- ▶ Create new PSTs or 8 different email formats from filtered messages
- ▶ Harvester ESI "easy" Vault (Custodial Drag and Drop window)
- ▶ Keyword filter MS Outlook PST's, attachments, loose files and archives

With the release of Harvester 4.0 Portable, users have a completely redesigned and upgraded user interface, providing an even easier workflow when creating collection job profiles.

Harvester Portable allows users to filter and defensibly collect E-Discovery files from a laptop, desktop or network locations. Harvester Portable can be run from an external hard drive or host computer. In addition to collecting data, Harvester Portable a very powerful culling tool that many use post collection to filter Microsoft Outlook PST's, and loose files by keyword, date range, and other criteria.

COMMON HARVESTER PORTABLE USES:

- ▶ Send Self-Collection hard drive
- ▶ Keyword filter client data
- ▶ Regenerate Microsoft Office PST's
- ▶ Export Keyword indexes

Self-Collection kits allow users to pre-configure an external hard drive with customized collection job profiles, thus allowing the job to be run by a custodian or IT professional without any prior software training or experience. The scripted jobs can identify files and emails by keyword, date range, and also perform deduplication and deNIST-ing. Matching items will automatically be copied back to the attached drive. Harvester Portable will run from an external drive without installing any files on the host computer. Data collected with Harvester Portable can be processed with all popular E-Discovery tools or shipped to the vendor of your choice.

THE HARVESTER 4.0 PORTABLE UPGRADE PROVIDES:

Significant performance enhancements when users need to search keyword terms ▶ Create keyword indexes and export the results ▶ Quickly build lists for relevant documents or preview hits real-time ▶ Review detailed information for file types, keyword hits, and other criteria by choosing which items to collect ▶ Target and review relevant E-Discovery content ▶ Quick access to collection statistics ▶ Harvester 4.0 users will easily create E-Discovery self-collection kits or use for in-house E-Discovery culling.

PINPOINT LABS

PRESERVE · COLLECT · DISCOVER

▶ WWW.PINPOINTLABS.COM

POWERFUL E-DISCOVERY COLLECTION SOFTWARE

▶ 8246 Oddo Circle ▶ Murray, NE 68409 ▶ 402.235.2381 ▶ 888.304.1096



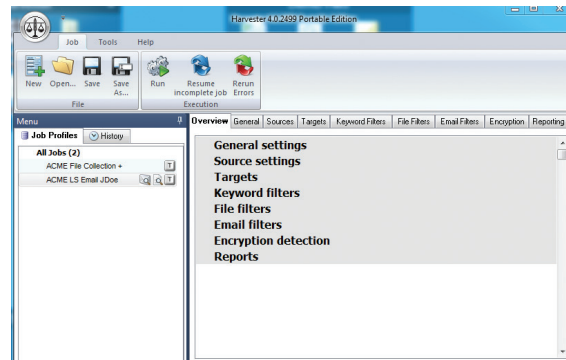
HARVESTER PORTABLE



Defensible E-Discovery
Collection Software

Check out the
New Features!

Redesigned interface allows all options to be easily accessed within one interface. Users can view all job tickets, keyword reports, job history, and much more! This additional user-friendly feature makes training new Harvester users much easier.



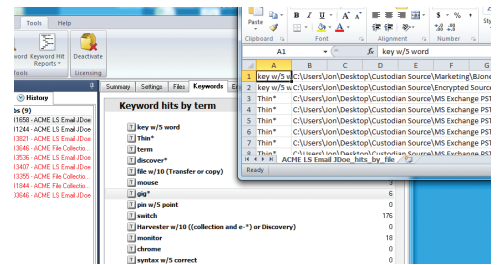
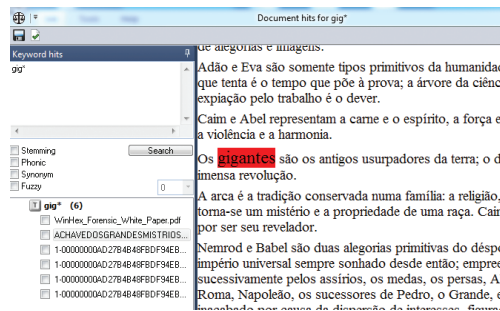
Real Time Statistics -
hit preview to show what type of files you are collecting.

	Loose Files	Archived	Email Attach.	Total
Other	4 743 MB	0 / 0 Bytes	2 / 278 KB	6 / 743 MB
History and Settings Files	1 / 2083 KB	0 / 0 Bytes	1 / 2083 KB	1 / 2083 KB
dot	1 / 2083 KB	0 / 0 Bytes	0 / 0 Bytes	1 / 2083 KB
Web Documents	1 / 3772 KB	0 / 0 Bytes	1 / 3772 KB	1 / 3772 KB
htm	1 / 3772 KB	0 / 0 Bytes	1 / 3772 KB	1 / 3772 KB
Database Files	5 / 238 MB	18 / 757 MB	0 / 0 Bytes	23 / 995 MB
mdb	2 / 768 KB	9 / 322 MB	0 / 0 Bytes	11 / 397 MB
accdb	3 / 163 MB	9 / 435 MB	0 / 0 Bytes	12 / 598 MB
Images	1 / 801 MB	1 / 1508 KB	0 / 0 Bytes	2 / 816 MB
jpg	0 / 0 Bytes	1 / 1508 KB	0 / 0 Bytes	1 / 1508 KB
psp	1 / 801 MB	0 / 0 Bytes	1 / 801 MB	1 / 801 MB
Office Documents	38 / 2006 MB	0 / 0 Bytes	59 / 4024 MB	97 / 603 MB
Email Files	5 / 643 MB	0 / 0 Bytes	5 / 643 MB	5 / 643 MB
Archives	2 / 134 MB	0 / 0 Bytes	0 / 0 Bytes	2 / 134 MB

Interactive (EDA) Early Data Assessment -
to help scope the project - users can apply search criteria with the option to uncheck any file types they are not wanting to preserve prior to finishing the collection phase.

	Loose Files	Archived	Email Attach.	Total
Office Documents	38 / 2006 MB	0 / 0 Bytes	59 / 4024 MB	97 / 603 MB
Images	1 / 801 MB	0 / 0 Bytes	0 / 0 Bytes	1 / 801 MB
Email Files	1 / 801 MB	0 / 0 Bytes	0 / 0 Bytes	1 / 801 MB
Other	4 / 743 MB	0 / 0 Bytes	2 / 278 KB	6 / 743 MB
Database Files	5 / 238 MB	0 / 0 Bytes	0 / 0 Bytes	5 / 238 MB
Archives	2 / 134 MB	0 / 0 Bytes	0 / 0 Bytes	2 / 134 MB

Keyword hit highlighting
allowing you to verify what keywords and how many hits are located within each document. You can then cull your data down further by conducting an additional **keyword search**. This is great for creating subsets and whittling down false positives.



Keyword hit reports can be saved in 4 different formats - essential in attorney review.



HARVESTER SERVER



Defensible Automated E-Discovery
Collection

**Harvester 4.0
has Arrived!!**

SEARCH AND COLLECT DISCOVERABLE DOCUMENTS AND EMAIL

Incomplete and undocumented electronic discovery collections occur every day. The result of mishandling these files can be costly to both the client and their legal counsel. Unlike other offerings, Pinpoint Labs doesn't require you to purchase additional products or services in order to facilitate a collection. Data collected with Harvester can be accessed with other popular E-Discovery tools. A simple flat rate pricing structure allows you to use the tools as often as you need without worrying about hidden fees.

HARVESTER FEATURES

- ▶ Early Data Assessment (EDA) Reports
- ▶ Identifies non-searchable/encrypted files
- ▶ DeNIST and Dedupe
- ▶ Multi-threaded
- ▶ Create new PSTs or 8 different email formats from filtered messages
- ▶ Harvester ESI "easy" Vault (Custodial Drag and Drop window)
- ▶ Keyword filter MS Outlook PST's, attachments, loose files and archives

Harvester 4.0 Server offers a completely redesigned and upgraded user interface, providing an even easier workflow when creating collection job profiles.

COMMON HARVESTER SERVER USES:

- ▶ Remotely collect E-Discovery data from custodian computers across the network
- ▶ Monitor job progress and generate reports from a central location
- ▶ Run customized job profiles that keyword search, deduplicate, deNIST, and perform many other targeted collection options

Harvester Server allows users to filter and defensibly collect E-Discovery files from a laptop, desktop or network locations. Harvester Server can be used to monitor jobs from a central location and launch pre-configured collection job profiles on remote computers. In addition to collecting data, Harvester Server is also a very powerful culling tool that many use post collection to filter Microsoft Outlook PST's, and loose files by keyword, date range, and other criteria. Being able to get real-time feedback as collection jobs start and monitor overall progress is very useful. Progress results can be emailed directly from Harvester Server as a Microsoft Excel spreadsheet, PDF, RTF, and many other formats.

Remote Collection: Harvester Server administrators can pre-configure collection job profiles which can be ran in "stealth" mode on remote computers. Harvester collection job profiles can also be launched by a link in an email or legal hold notice sent to each custodian. The scripted jobs can identify files and emails by keyword, date range, and also perform deduplication and deNISTing. Matching items will automatically be copied to the specified network target location. Data collected with Harvester Server can be processed with all popular E-Discovery tools or shipped to the vendor of your choice.

THE HARVESTER 4.0 PORTABLE UPGRADE PROVIDES:

The ease to centrally manage and monitor Enterprise level collection or culling jobs – whether they are running directly from local production computers or remote systems

- ▶ Ability to run a job from any shared network location
- ▶ Option to create keyword indexes and export the results – allowing users to quickly preview their hits real-time across a large number of client systems
- ▶ Review detailed information for file types, keyword hits, and other criteria choosing which items to collect
- ▶ Customize colors for running jobs and use advanced filtering options.

PINPOINT LABS

PRESERVE · COLLECT · DISCOVER

▶ WWW.PINPOINTLABS.COM

POWERFUL E-DISCOVERY COLLECTION SOFTWARE

▶ 8246 Oddo Circle ▶ Murray, NE 68409 ▶ 402.235.2381 ▶ 888.304.1096



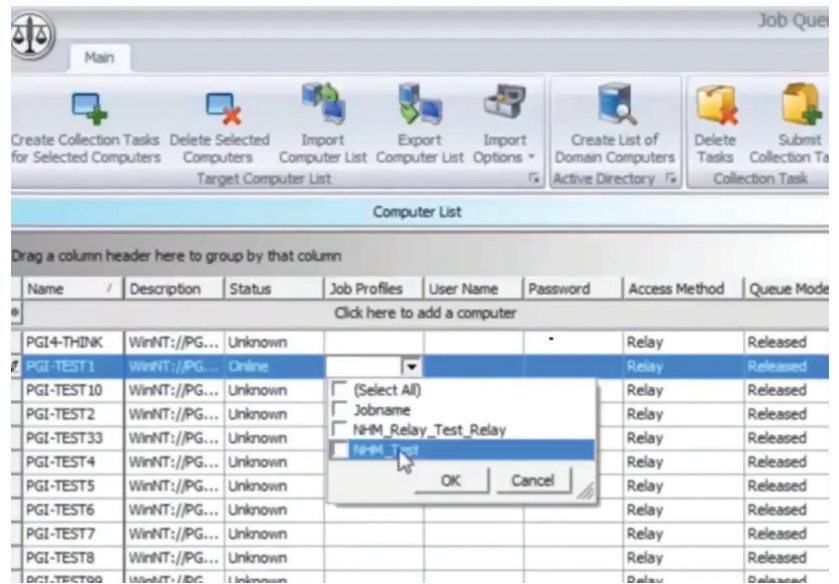
HARVESTER SERVER



Defensible E-Discovery
Collection Software

**Check out the
New Features!**

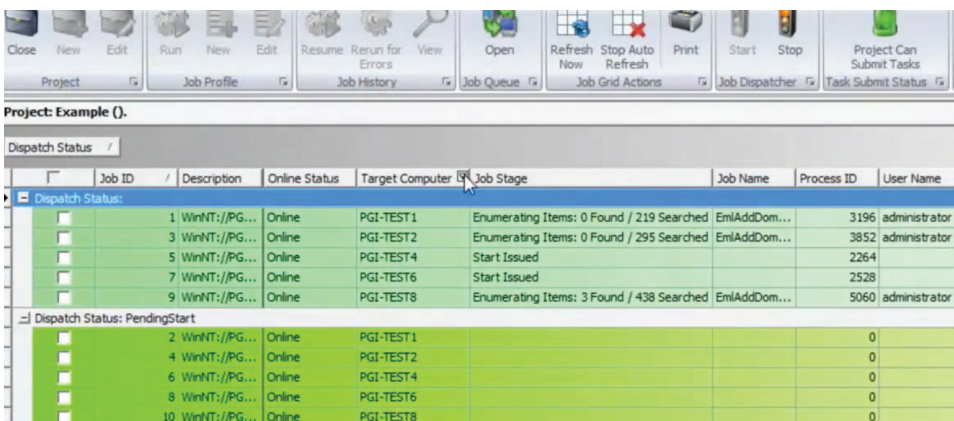
Import a custom computer list or have Harvester take a quick inventory of all the computers on the domain Directory Search by using **Active Directory Search**. Then you can quickly ping the computers to make sure the computer is online, assign the job to a specific job profile (great for legal holds), and apply a specific job ticket to be remotely launched on that custodians computer.



ADDITIONAL HARVESTER 4.0 SERVER FEATURES:

- ▶ Upgraded user interface provides administrator easy access to profiles, job monitor, and scheduling
- ▶ Automated job resume for remote client systems
- ▶ Job dispatcher manages collections across multiple projects
- ▶ Easily open, run or edit job profiles

Efficiently organize and monitor all of your projects and jobs that are being processed across the network.



PINPOINT LABS

PRESERVE · COLLECT · DISCOVER

▶ WWW.PINPOINTLABS.COM

POWERFUL E-DISCOVERY COLLECTION SOFTWARE

▶ 8246 Oddo Circle ▶ Murray, NE 68409 ▶ 402.235.2381 ▶ 888.304.1096

Evidox Provides Comprehensive E-Discovery Collections Using Harvester Server Software

"We go through an extensive vetting process with any software tool we use on our clients' data. Pinpoint Labs Harvester not only passed our internal tests with flying colors, our technicians have come to rely on it heavily in the field. The Pinpoint Labs team has always been there to help when needed. I can't say enough about the quality of the products and people over at Pinpoint Labs." — **Lynn Turgeon, COO**

"We love the fact that Harvester can be placed on any portable drive or executed from a shared network location. This allows us to complete onsite collections with minimal setup on our client's computers. Running remote jobs without the custodian's knowledge is also critical to our clients and the collection process which Harvester performs exceptionally well." — **Sam Bastawros, Senior Project Manager**

ABOUT EVIDOX

Evidox is a leading provider of e-discovery services including collection, preservation, processing, hosting and production. Evidox differs from other vendors in its legal-centric approach. Its founders have AmLaw 100 backgrounds and previously ran the largest in-house e-discovery facility in New England.



The guiding philosophy of Evidox is that e-discovery is not a technical issue; it is a legal issue with a technical solution. As such, the questions of scope and cost remain in the hands of the supervising attorneys, not the technicians. The technology serves the legal process rather than driving it.

Evidox and its principals have conducted thousands of e-discovery projects in hundreds of cases involving many terabytes of data and millions of documents. In every case, however, the primary objective has been to make the project as compact, efficient and inexpensive as possible, consistent with the requirements of the discovery process.

BUSINESS CASE EXAMPLE

Evidox was contacted by a client that needed electronic data collected from all employees in the company. The collection needed to take place without the custodian's knowledge. The sources included but were not limited to:

- ▶ Microsoft Exchange Email servers
- ▶ Employee file shares on the company network
- ▶ Employee file shares on cloud servers
- ▶ Employee local loose files and Outlook PST archives

The client provided 64 search phrases that included Boolean, proximity and wild cards. The source information also needed to be de-duped and de-NISTed at the point of collection. More than 6 terabytes of data were located in the sources identified.

To reduce the project cost, Evidox technicians offered to setup and manage the collection remotely through VPN access on their client's systems. The staff at Evidox found the perfect software tool they needed to complete the project from Pinpoint Labs.

Harvester Server from Pinpoint Labs is a scalable and robust tool specifically designed to perform targeted defensible e-discovery collections across a network or from portable devices. After reviewing several competing tools, Evidox chose *Harvester Server* because it provided ease of installation and the required searching and secure collection capabilities without being cost prohibitive. Evidox remotely installed and configured *Harvester Server* on a virtual server created at the client location for the collection project.

Using the *Harvester Server* remote job scheduler, Evidox technicians were able to launch the collection jobs without the custodian's knowledge and track the real-time progress from a central management console. File server collections were queued on the administrative systems provided and monitored remotely. At the end of each day, Evidox could report updates created by *Harvester Server* to the legal teams.

A total of 95 gigabytes of target data were identified and collected from more than 6 terabytes of storage searched. *Harvester Server's* ability to quickly search loose files, archives, email stores (Microsoft Outlook PST's, Lotus Notes NSF's), attachments and other sources enabled Evidox to provide a precisely targeted collection. The significant target data reduction (only .016%) resulted in a considerable savings in the client's production and hosting costs.

TESTIMONIALS

"We go through an extensive vetting process with any software tool we use on our clients' data. Pinpoint Labs Harvester not only passed our internal tests with flying colors, our technicians have come to rely on it heavily in the field. The Pinpoint Labs team has always been there to help when needed. I can't say enough about the quality of the products and people over at Pinpoint Labs."
— Lynn Turgeon, COO

"We love the fact that Harvester can be placed on any portable drive or executed from a shared network location. This allows us to complete onsite collections with minimal setup on our client's computers. Running remote jobs without the custodian's knowledge is also critical to our clients and the collection process which Harvester performs exceptionally well."
— Sam Bastawros, Senior Project Manager

To learn more about Evidox, please visit their website at www.evidox.com. More information on *Harvester Server* software from Pinpoint Labs is available at www.pinpointlabs.com.



HARVESTER FEATURES

- ▶ Early Data Assessment (EDA) Reports
- ▶ Keyword filter Active MS Outlook Accounts (Exchange, Yahoo, etc.)
- ▶ Identifies non-searchable/encrypted files
- ▶ Harvester ESI "easy" Vault (Custodial Drag and Drop window)
- ▶ Write files to TrueCrypt volume for security
- ▶ DeNIST and Dedupe
- ▶ Use with Portable ESI Self Collection Drives/Kits
- ▶ Keyword filter MS Outlook PST's, attachments, loose files and archives
- ▶ Dedupe across multiple MS Outlook PSTs
- ▶ Create new PSTs or 8 different email formats from filtered messages
- ▶ Search multiple timestamps
- ▶ Create file summary and file lists from filtered file and messages
- ▶ Multi-threaded
- ▶ Set expired licenses for Harvester Portable using Portable License Manager (PLM)
- ▶ No per gig fees and No per Custodian fees

POWERFUL ESI COLLECTION SOFTWARE

Ditto Provides Targeted eDiscovery Collections Using Harvester Portable Software

Ditto is a leading provider of eDiscovery services and digital asset management including collection, culling/minimization, processing, review, litigation support, hosting, print production and fulfillment services. Ditto was founded in 1996 and is headquartered in Pittsburgh, PA.

At Ditto, their mission is to create measurable value for their clients. The leaders and professional team members have been providing litigation support services for almost two decades. Ken and Steve Shriber, the firm's owners, have been in the trenches with their clients from the time they started the firm and have continued to invest in their business and evolve to meet the technological demands manifested in all aspects of the litigation discovery life cycle.

BUSINESS CASE EXAMPLE

Matt Morocco, Manager of eDiscovery Services, is tasked with facilitating onsite client collections and culling on a regular basis. The criteria for the projects can vary greatly and Matt relies on various software tools to complete his projects. One of his "must have" applications is **Harvester** from Pinpoint Labs.

SCENARIO #1 – CASTING A WIDER NET

There are two common scenarios that Ditto encounters while fulfilling their clients' requests. The first is to collect hundreds of gigabytes of data from corporate network file shares and custodian systems. In this scenario, only specific file locations and potentially relevant file types require collection.

Matt and his team use **Harvester Portable** on one or multiple external hard drives to complete the collections. While meeting with the client's IT department, Ditto is informed of specific locations that are likely to contain relevant data that need to be collected and preserved. Once the locations are selected within **Harvester** and Ditto starts the job, the tool begins enumerating the data and using the multithreaded Viper copy engine to collect the sources. Ditto clients are pleasantly surprised that the team doesn't have to install any software on their systems to complete the collection.

*"Our legal and corporate clients enjoy knowing that we have a flexible tool like **Harvester** to pinpoint selected data types and certain custodians or domains, and that we can de-NIST, keyword search and de-dupe at the point of collection! As a bonus, the IT counterparts we work with to collect the data are thrilled with the low overhead of the tool and are comforted by the safety and security of the process."*

Matt and his clients like that **Harvester** can collect active/native files in a defensible manner without going through costly full disk imaging and then having the additional expenses of extraction and data processing downstream. Sometimes a forensic image is needed, but most often, Ditto's clients just need to collect, and **Harvester** has the features and the flexibility to get the job done defensibly and quickly.

In the upcoming weeks or months, legal counsel will then refine keywords and date ranges. Once the Ditto team receives the criteria, they often run the data through **Harvester** before ingesting the entire collection into Ditto's eDiscovery processing or review software. By culling the data through the tool, Ditto can often reduce the dataset as much as 90%. The reduction enables a more efficient review and results in significant cost-savings in review and



hosting for their clients. The ability to use **Harvester** to cast a broader net during collection and to be used as a powerful culling tool are considerable advantages.

SCENARIO #2 – SHARING THE REMOTE CONTROL

Remote assisted collections is one of Ditto's most common uses for their smaller client firms and corporate clients who don't have a dedicated or large IT staff. Ditto uses **Harvester** frequently via WebEx or GoToMeeting. Matt sends his client a link to download and activate the tool remotely and screen shares as the client identifies relevant files and emails. Matt and his team then configure a detailed **Harvester** job that will automatically collect the relevant paths. Plus, for those specific files that only a custodian would know the location of, Matt's team will show them the **Harvester** ESI Vault. The **Harvester** Vault allows clients to pick individual files, folders, or even email messages from MS Outlook and drag and drop them into a window and execute a defensible self-collection.

Ditto's clients take comfort in watching the process and knowing that Ditto isn't probing all around their network. They witness first-hand the value that **Harvester** provides and are thrilled that they have gained a trusted partner who uses a comprehensive tool that can do for them things that they thought were way too advanced or expensive.

"HARVESTER IS MY FAVORITE KNIFE IN THE KITCHEN"

The versatility and speed of **Harvester** to perform multiple tasks individually or all at once make it an essential tool for eDiscovery departments like the one at Ditto. **Harvester's** search criteria enables users to get very granular and reduce datasets further than with other collection tools. In cases where the legal counsel has decided to perform targeted collections, Ditto uses **Harvester** to setup several criteria options, all of which can happen right at the point of collection, saving Ditto and their clients both time and money:

- ▶ Complex (proximity) search terms and date ranges;
- ▶ Searching and extracting individual files from zip archives;
- ▶ Regenerating new filtered and de-duped PSTs;
- ▶ Identify and collect image only PDFs.



HARVESTER FEATURES

- ▶ Early Data Assessment (EDA) Reports
- ▶ Keyword filter Active MS Outlook Accounts (Exchange, Yahoo, etc.)
- ▶ Identifies non-searchable/encrypted files
- ▶ Harvester ESI "easy" Vault (Custodial Drag and Drop window)
- ▶ Write files to TrueCrypt volume for security
- ▶ DeNIST and Dedupe
- ▶ Use with Portable ESI Self Collection Drives/Kits
- ▶ Keyword filter MS Outlook PST's, attachments, loose files and archives
- ▶ Dedupe across multiple MS Outlook PSTs
- ▶ Create new PSTs or 8 different email formats from filtered messages
- ▶ Search multiple timestamps
- ▶ Create file summary and file lists from filtered file and messages
- ▶ Multi-threaded
- ▶ Set expired licenses for Harvester Portable using Portable License Manager (PLM)
- ▶ No per gig fees and No per Custodian fees

POWERFUL ESI COLLECTION SOFTWARE

The resulting filtered data can be extracted as native files or in a single container file. Subsequently, the collected data can be directly ingested or analyzed in Ditto's eDiscovery production software. Ditto often deals with rolling data collections and Matt's team frequently uses previously created hash lists from **Harvester** to further de-dupe newly collected data.

Ditto regularly leverages **Harvester's** de-duping functionality to reduce client data up to 75%. One of his largest corporate clients has emails for thousands of custodians that span many years that are stored in weekly backups. Combining email de-duping with keyword search capabilities enables Matt and his team to provide a very effective first pass cull process, saving the client untold amounts of money. According to Matt, **Harvester's** exceptional speed and lower costs are a huge bonus:

*"The fact that we can use data collected by **Harvester** with other eDiscovery applications without conversion saves us a lot of time. While there are plenty of so-called end-to-end solutions on the market, I prefer to take a best of breed (Swiss army knife) approach of using the best tool for each portion of the job, not necessarily always using an end-to-end solution that may seem convenient but might not prove as effective."*

Another key area where **Harvester** adds value for Ditto and their clients is in Early Case Assessment, one of the first and often most valuable steps in any workflow. Whether at the point of collection, or after data has already been received, Ditto's clients often want to know more about what is in the collected data. The **Harvester** Data Assessment feature provides Matt and his team with numerous reports they can provide to their clients that detail the file types, categories, sizes, location and even document level keyword hits of a data set. In addition to using **Harvester's** Data Assessment for client reports, Ditto often uses this feature to generate internal reports for project media.

TESTIMONIAL

*"I've worked with the people and tools from Pinpoint Labs for several years. I consider them an extension of the Ditto team because they treat our jobs with the same urgency we do. The **Harvester** tool is irreplaceable and their support is among the best I've experienced."*

- Matt Morocco, eDiscovery Manager

To learn more about Ditto, please visit their website at www.dittohq.com. More information about **Harvester** software from Pinpoint Labs is available at www.pinpointlabs.com.



SHAREPOINT COLLECTOR

Search and Collect Discoverable
SharePoint Documents and Lists

Are you looking for a robust application that can help you deal efficiently with Microsoft SharePoint documents and related items? Have you found your choices limited and expensive? Pinpoint Labs has released the **SharePoint Collector (SPC)** that is affordable, easy to use, and provides a defensible means of collecting discoverable information from SharePoint enterprise and cloud sites.

TARGETED SHAREPOINT COLLECTIONS

Want to quickly locate all SharePoint list items created or edited by a user? **SPC** allows you to quickly export document libraries, as well as perform targeted collections when needed, dramatically reducing the collection size and overall project costs.

Common electronically stored information (ESI) relevant to a litigation is often stored in SharePoint sites, but companies struggle in meeting their production requests. They find the built-in search and retrieval features don't provide a means to satisfy their requirements and don't know where to turn.

EASY DATA EXPORT WITH METADATA

Once a user selects relevant items, **SPC** exports those items to the location of choice. Files can be stored on a portable drive or saved to server locations (SANS/NAS). The resulting files include the associated metadata and detailed chain of custody that lists the date/time, hash value and other details that ensure a fully defensible ESI collection.

NO LOCAL INSTALLATION REQUIRED

Like other Pinpoint Labs products, **SPC** can be run from a flash drive or external hard drive without any local installation. In fact, remote collections have been completed where users only need access to the SharePoint website link and can collect data from a secure location. This significantly reduces hurdles often encountered by the IT staff in trying to service many requests.

Pinpoint Labs ESI collection products are relied on every day by many Fortune 500 companies, government agencies, and legal departments worldwide. You can request a free copy of Pinpoint Labs' **SPC** tool and find out how much easier it is to satisfy production requests and save money, too.

SHAREPOINT COLLECTOR (SPC) FEATURES

- ▶ Retrieve Contents From All Sites (*intranet portals, extranet sites, Internet and cloud locations*)
- ▶ Collect Everything (*documents, lists, calendar, contacts, announcements, attachments, Wiki, blogs*)
- ▶ Extract File Metadata (*embedded information that traces history, access or usage*)
- ▶ Maintain Chain of Custody (*evidence not altered or changed from the time it was collected*)
- ▶ Collect Relevant User Data (*ID, name, email address, personal profile, etc.*)
- ▶ Do Differential Collection (*searching only for files that have changes or have been added*)
- ▶ Retain Folder/File Structure and Display File Lists
- ▶ Run from Flash/USB Drive and Resume Incomplete Jobs

PINPOINT LABS

PRESERVE · COLLECT · DISCOVER

▶ WWW.PINPOINTLABS.COM

THE ROBUST AND PORTABLE SHAREPOINT COLLECTION TOOL

- ▶ 8246 Oddo Circle ▶ Murray, NE 68409
- ▶ 402.235.2381 ▶ 888.304.1096

The Oliver Group Chooses SharePoint Collector for Fortune 500 Health Care Provider Collection

"As a Data Acquisition and Forensic (DAF) Senior Expert I am often tasked with acquiring data defensibly from a host of source technologies, including SharePoint. On a recent project I utilized **SharePoint Collector (SPC)** as the best of breed, defensible solution. The acquisition project involved the collection of over 650,000,000 documents from a SharePoint environment. Remote management through SPC was pivotal in the efficient, seamless collection of data. SPC has been vetted, employed and will continue to be a primary tool for our Senior Expert DAF team members" — **Dave Cross, Senior Forensics Expert, The Oliver Group – ACE, CCE, MCSE, Security+, Licensed and Insured Private Investigator**

ABOUT THE OLIVER GROUP

The Oliver Group (TOG) was founded in 1997 and provides specialized e-discovery services to corporations, litigation support providers and major law firms.

TOG is a proven, reliable partner with extensive experience including some of the world's most publicized corporate legal actions of the last decade. Its U.S. headquarters is located in Connecticut and its EU headquarters is located in London.

SERVICE OFFERINGS

TOG helps clients navigate the early stages of the e-discovery process through service offerings that include:

- ▶ Data Acquisition and Forensic Analysis
- ▶ Media Restoration and Conversion
- ▶ Data Preservation and Remediation
- ▶ Data Filtering, Culling and Searching
- ▶ Litigation and Compliance
- ▶ Readiness Assessments

A rigorous project management methodology is employed on every client engagement. The process has been continually improved over more than a decade and ensures:

- ▶ Transparency – clients know what is happening and why at every step.
- ▶ Consulting and Project Management

- ▶ Reliability – goals are set correctly, timelines are realistic and outcomes are predictable.
- ▶ Integrity – data is handled properly and is kept secure and confidential.



TOG facilities are highly scalable and secure environments that enable the firm's conversion, processing, and restoration capabilities. This state-of-the-art infrastructure includes an array of tape libraries, hundreds of servers and tape drives, multiple terabytes of data and secure media vaults.

BUSINESS CASE EXAMPLE

On a recent project, TOG was tasked with a large SharePoint collection for a Fortune 500 health care provider. The SharePoint configuration was customized for the client's industry and required a flexible collection tool and thorough investigation of where all relevant data resided.

Initially, the client believed there were just a few root sites but ended up identifying over 30 root sites and 3,800 sub sites. TOG was asked to identify, preserve and collect documents and list items related to 21 custodians. The staff at TOG found the right software tool they needed to complete this challenging project from Pinpoint Labs.

SharePoint Collector (SPC) is a scalable tool designed to handle SharePoint collections of all sizes. Due to the strict security requirements at TOG's client sites, they would need to use tools that didn't have to be installed on the Share-

Point servers or client machines. SPC can run on any system that has access to the site (even remotely) or from an external drive. TOG found that SPC was the only application they reviewed that could work under their client's strict security restrictions.

When the project was completed, over 650 million records representing more than 2 terabytes of data were searched and SPC was able to determine that all the relevant documents for the identified custodians was only 3,882 documents. This huge reduction was the result of SPC identifying the specific metadata related to the 21 custodians provided by TOG's client.

SPC provided the necessary reports for TOG and its client. An extensive chain of custody logs and reports were created during the project that included hash verification, time and date stamps for each record and logs of all the items that were searched and identified.

CLIENT TESTIMONIAL

*"As a Data Acquisition and Forensic (DAF) Senior Expert I am often tasked with acquiring data defensibly from a host of source technologies, including SharePoint. On a recent project I utilized **SharePoint Collector (SPC)** as the best of breed, defensible solution. The acquisition project involved the collection of over 650,000,000 documents from a SharePoint environment. Remote management through SPC was pivotal in the efficient, seamless collection of data. SPC has been vetted, employed and will continue to be a primary tool for our Senior Expert DAF team members" — **Dave Cross, Senior Forensics Expert, The Oliver Group – ACE, CCE, MCSE, Security+, Licensed and Insured Private Investigator***

To learn more about The Oliver Group, please visit their website at www.the-olivergroup.com. More information on Pinpoint Labs versatile collection software is available at www.pinpointlabs.com.



SHAREPOINT COLLECTOR (SPC) FEATURES

- ▶ Retrieve Contents From All Sites (*intranet portals, extranet sites, Internet and cloud locations*)
- ▶ Collect Everything (*documents, lists, calendar, contacts, announcements, attachments, Wiki, blogs*)
- ▶ Extract File Metadata (*embedded information that traces history, access or usage*)
- ▶ Maintain Chain of Custody (*evidence not altered or changed from the time it was collected*)
- ▶ Collect Relevant User Data (*ID, name, email address, personal profile, etc.*)
- ▶ Do Differential Collection (*searching only for files that have changes or have been added*)
- ▶ Retain Folder/File Structure and Display File Lists
- ▶ Run from Flash/USB Drive and Resume Incomplete Jobs

THE ROBUST AND PORTABLE SHAREPOINT COLLECTION TOOL



Collect Discoverable Documents
and Mail Stores



FORENSICALLY SOUND FILE COLLECTION

Incomplete and undocumented electronic discovery collections occur every day. The result of mishandling these files can be costly, to both the client and their legal counsel. Proper file collection methods should be discussed at the beginning of each case.

When collecting files for electronic discovery, you should use processes and applications that preserve and verify collected electronic files with minimal impact on client systems. Without these, creating defensible and verifiable electronic discovery productions and evidence authentication is difficult, if not impossible.

SafeCopy is offered in several different formats tailored to fit your needs and the needs of your project. Now you can quickly and easily obtain defensible forensically sound active file collections.

SAFECOPY FEATURES

- ▶ Select from multiple data sources (file shares, individual files or file list)
- ▶ Supports paths greater than 255 characters (up to 32,000)
- ▶ Resumes automatically after network outages
- ▶ Multithreaded
- ▶ 100% file copy verification (using MD5 hash comparison)
- ▶ Preservation of file system timestamps and metadata
- ▶ Filter by file extension (inclusion, exclusion and use file extension) and date range



SafeCopy Server

- ▶ Perfect for companies with ongoing collection needs
- ▶ Freedom to use **SafeCopy** on any computer on your network
- ▶ Runs from server, external USB or NAS device
- ▶ Small footprint
- ▶ No installation required

SafeCopy Portable

- ▶ Easily distribute temporary SafeCopy license
- ▶ Perfect for clients who have a one time, short term collection project
- ▶ Hassle free - no USB drive or software to track or return
- ▶ Runs from external hard drive, flash drive or server
- ▶ Create job file for automated collection

PINPOINT LABS

PRESERVE · COLLECT · DISCOVER

▶ WWW.PINPOINTLABS.COM

REALLY FAST COPIES

▶ 8246 Oddo Circle ▶ Murray, NE 68409 ▶ 402.235.2381 ▶ 888.304.1096