

# EVLUMA ConnectLED™

## WIRELESS CONTROLS SOFTWARE

FOR AREAMAX™ LED LIGHTING

**CLED PC**  
**CLED TBL**

### DESCRIPTION

ConnectLED is a software application that communicates with the AreaMax LED luminaire for area and security lighting via BLE (Bluetooth Low Energy). Enhance energy efficiency with dimming and custom brightness settings. Reduce maintenance costs with connect and disconnect functions. Every AreaMax comes with FaultCast built-in. Use ConnectLED to easily read these maintenance transmissions from the ground. Maintain fixture uniformity - broaden AreaMax applications with this easy-to-use software.



ConnectLED:  
Laptop (dongle) and Tablet  
versions available.



ENHANCE ENERGY  
EFFICIENCY AND REDUCE  
MAINTENANCE COSTS.

OVERVIEW  
Bluetooth Protocol  
Windows 7, 8.1  
Android Tablet  
Licensed Based  
For AreaMax LED  
Evluma Proprietary

### Dimming

Maximize energy savings when setting custom dimming schedules for anytime between dusk and dawn. Dimming range is between 100% to a 20% glow.

### Custom Brightness

The AreaMax delivers .01 fc at up to four mounting heights. Need less light due to location (light trespass), or energy budget? Define brightness settings that also save energy. Perfect for light sensitive areas. Match with the full-cutoff AreaMax for the best Dark Sky Friendly results.

### Connect/Disconnect

Easily manage the use of electricity from the ground during the transfer or disconnection of service and save on maintenance. Perfect for areas that only require seasonal lighting.

### FaultCast Maintenance Transmissions

Every AreaMax comes with FaultCast built-in. Use ConnectLED to activate this handy maintenance feature that reads the status broadcast from the AreaMax during the day - the hardest time to troubleshoot a light!

### Operating Platform

ConnectLED runs on Windows 7 or Windows 8.1 (laptop recommended) with a licensed dongle, or on an Android Tablet.

### Range of Operation

Operates up to 150 ft from the luminaire. Line of sight recommended.

### Licensing

ConnectLED connects to each AreaMax individually using the AreaMax's unique MAC address. Promo license packs of 8 are available when purchasing a 4 x 4 promotion. Have a larger installation base? Let us work with you to develop a roll-out plan.

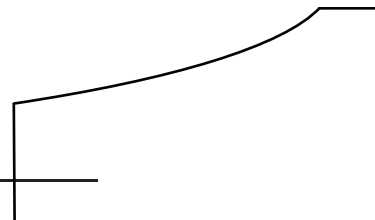
### Connectivity

ConnectLED uses Bluetooth Low Energy (BLE). Every AreaMax is shipped from the factory with the ability communicate with ConnectLED. Activate management and energy saving features at any point during your AreaMax ownership.



LED Lighting

3600 Lind Ave SW, Suite 140, Renton, WA 98057 425-336-5800 www.evluma.com



# EVLUMA ConnectLED™

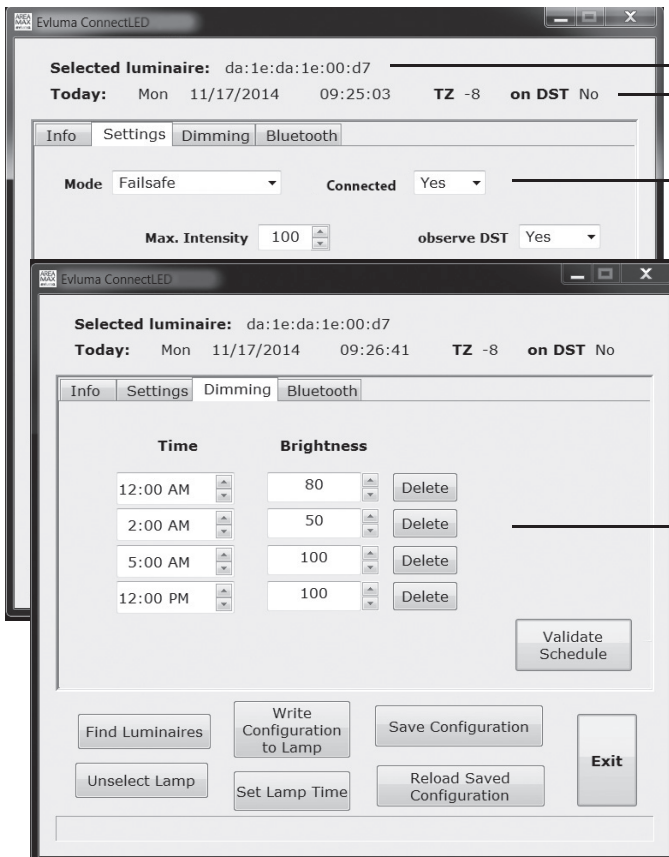
## WIRELESS CONTROLS SOFTWARE

FOR AREAMAX™ LED LIGHTING

**CLED PC**  
**CLED TBL**

### ORDERING INFORMATION

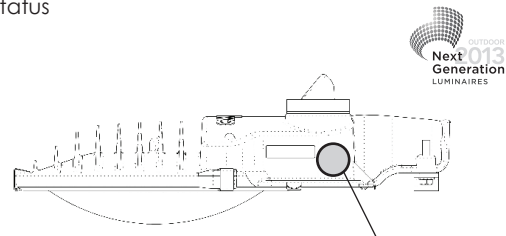
PRODUCT DESCRIPTION	CATALOG NUMBER	AREAMAX REMOTE QUICK REFERENCE CONNECT/ DISCONNECT
ConnectLED, Tablet Version, Android order with choice of license:	CLED-TBL-A-001	DAYTIME CONNECT The AreaMax will come on and stay on for 10 minutes then shut off.
ConnectLED, Tablet, License, Basic	CLED-TBL-BASIC	DAYTIME DISCONNECT The AreaMax will flash 4x to confirm disconnection then shut off.
ConnectLED, Tablet, License, Promo	CLED-TBL-PROMO	NIGHTTIME CONNECT The AreaMax will turn on and stay on.
ConnectLED, Tablet, License, Enterprise	CLED-TBL-ENT	NIGHTTIME DISCONNECT The AreaMax will flash 4x to confirm disconnection then shut off.
ConnectLED, PC Version, Windows order with choice of license:	CLED-PC-W-001	
ConnectLED, PC License, Promo	CLED-PC-PROMO	
ConnectLED, PC License, Enterprise	CLED-PC-ENT	



unique MAC address

date and time settings

luminaire status



ConnectLED™

set dimming schedule

Every AreaMax is shipped from the factory with the ability communicate with ConnectLED. Activate energy saving features at any point during your AreaMax ownership.

PC Version of ConnectLED