



product introduction

The TSLOT Series of lights are an extrusion adaptive LED light illuminator with an intense and uniform light pattern that offer considerable energy savings over fluorescent lighting options. Mounting is easy in that the TSLOT unit slides into the extrusion with no need for extra mounting accessories. With the ability to direct-connect up to 6 modules lengths of 300mm to 1800mm are achievable in 300mm increments.



product features



- Compatible with most .32", 8mm and 10mm extrusion
- Easy install with male and female connector
- Direct-connect up to 6 units together
- Comes with TSLOT light unit and male connector

* Extrusion not included



product specifications

Electrical Input	24 VDC +/- 5%
Current	Max. 500mA
Wattage	Max. 12W
Connect	6 Max.
Connection	Phoenix Contact 2.5mm pitch, 2 position block plug - P/N1778832
Ambient Temp.	-20° - 50° C (-4° - 122° F)
IP Rating	IP50
Compliances	CE and RoHS
Weight	~34g
IEC 62471 Rating	See page 2



product number key

T SLOT300-WHI

-> Part Number Key

Product Family:
Linear Light
T SLOT

Size:
300mm

Color:
WHITE

CE and RoHS Compliant



product warnings



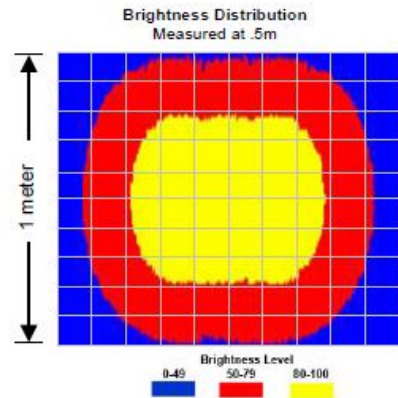
Attention

Please note that the power requirements for this unit are 500mA. Failure to provide 500mA may result in unrepeatability of lighting and premature LED and circuit board degradation.

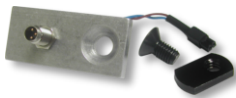


distance chart

Working Distance Mm (inches)	Pattern (80%-100% measured intensity) mm (inches)
.5m (~19.7")	550mm (~21.7") H x 560mm (~22") W
1m (~39.4")	760mm (~30") H x 760 (~30") W
1.5m (~59.1")	971mm (~38.2") H x 971mm (~38.2") W
Typical Output Performance	
Distance = 0.5 meter	1,660 lux
<i>Illumination measurement taken with white LEDs – 6000K</i>	



mounting & accessories



M8-TSLOT300-ADP

Extrusion mounted M8 Power Connector



M12-TSLOT300-ADP

Extrusion mounted M12 Power Connector



TSLOT300-ENDSTOP

Extrusion mounted end stop for TSLOT light



5PM12-22P

TSLOT M12 Pigtail Connector



TSLOT300-22-CR

2-Pin Jumper Cable for TSLOT Lights



compatibility list



- TSLOT300 is compatible with most .32", 8mm and 10mm aluminum extrusions including 80/20, Bosch, Item, and many more.
- Contact SVL for complete extrusion comparison chart



risk group

According to IEC 62471:2006. Full documentation upon request.

Notice

Exempt Group: No photobiological hazard to eyes or skin even for continuous, unrestricted use.
Applicable for wavelengths: WHI