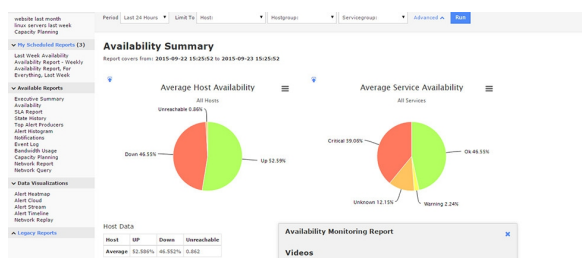


Nagios XI 5 monitors all mission-critical infrastructure components including applications, services, operating systems, network protocols, systems metrics, and network infrastructure.



Nagios XI

[Home](#)
[Views](#)
[Dashboards](#)
[Reports](#)
[Configure](#)
[Tools](#)
[Help](#)
[Admin](#)

Configure

Configuration Options

Configuration Items

Auto-Discovery

Service Templates

Advanced Configuration

Core Config Manager

More Options

My Account Settings

System Configurations

User Management

Import/Export Objects

Desktop Tools

Auto-Discovery Jobs

New Auto-Discovery Job

Refresh Job list

Size	Target	Exclusions	Schedule	Last Run	Devices Found	Created By	Status	Actions
192.168.5.2/24	-	-	Once	2014-02-19 11:11:39	16 <b>New</b> / 11 Total	ngagadinal	Finished	<a href="#">View</a> <a href="#">Edit</a> <a href="#">Delete</a>
192.168.5.2/24	-	-	Once	2014-02-19 11:19:04	16 <b>New</b> / 1 Total	ngagadinal	Finished	<a href="#">View</a> <a href="#">Edit</a> <a href="#">Delete</a>
192.168.5.2/24	-	-	Once	2014-04-04 07:18:37	16 <b>New</b> / 0 Total	ngagadinal	Finished	<a href="#">View</a> <a href="#">Edit</a> <a href="#">Delete</a>
192.168.5.2/24	-	-	Once	2014-04-04 07:18:37	16 <b>New</b> / 91 Total	ngagadinal	Finished	<a href="#">View</a> <a href="#">Edit</a> <a href="#">Delete</a>
192.168.5.2/24	-	-	Once	2014-04-15 16:02:28	16 <b>New</b> / 0 Total	ngagadinal	Finished	<a href="#">View</a> <a href="#">Edit</a> <a href="#">Delete</a>
192.168.5.2/24	-	-	Once	2014-04-15 16:02:34	8 <b>New</b> / 0 Total	ngagadinal	Finished	<a href="#">View</a> <a href="#">Edit</a> <a href="#">Delete</a>
192.168.5.2/24	-	-	Once	2014-04-15 16:19:17	30 <b>New</b> / 39 Total	ngagadinal	Finished	<a href="#">View</a> <a href="#">Edit</a> <a href="#">Delete</a>
192.168.5.2/24	-	-	Once	2014-04-15 16:19:03	2 <b>New</b> / 0 Total	ngagadinal	Finished	<a href="#">View</a> <a href="#">Edit</a> <a href="#">Delete</a>
192.168.5.2/24	-	-	Once	2015-09-22 18:58:03	2 <b>New</b> / 0 Total	ngagadinal	Finished	<a href="#">View</a> <a href="#">Edit</a> <a href="#">Delete</a>

Save time using built-in templates and newly updated smart wizards resulting in an efficient and effective experience. Faster reporting inside Nagios XI 5 runs in the background while you work. Actions run in the same view in a pop out window helping you cut down on load times. Nagios XI 5 features auto-upgrade functionality for any individual or all components and wizards.

Find what you need quickly and easily with a robust, subject-oriented, auto-suggest quick search tool. The flexible and intuitive user interface makes XI 5 easy to navigate and allows you to edit your personal interface as it suits your individual needs. Using the XI 5 in-line help is like having a Nagios trainer by your side. 130+ updated training videos guide you through the features and how to use them.

Organize your response strategy with email prioritization for different notification types. Prioritize your alerts and get them to the right person faster while lowering your response time. A new user walk-through guides you during your first-time log-in simplifying the on-boarding process and shortening the learning curve. The Nagios XI 5 interface comes with a guided tour for first-time users to cut down on the training process.

Redesigned wizards expedite configuration processes by allowing you to save settings in wizard defaults. Smarter SNMP and WMI wizards pull granular information such as drives, running processes, and services, automatically. XI 5 can now import LDAP and AD users from a list and add roles and access privileges to each user or in groups.

Locate applications and processes and detect rogue devices on your network with faster auto-discovery. Auto-discovery handles large infrastructures by using controllable throttling to avoid triggering intrusion detection alarms.



## New Cleaner And Faster UI

Intuitively navigate the web UI with icons highlighting key elements. Additionally, all drop-down lists in the interface have easy type-ahead filtering to quickly find the element you are looking for.

## More Robust Quick Search

Quick search navigation takes you immediately to hosts, host groups, and service groups. Actions often take place in pop out windows instead of changing pages. Acknowledgments, comments, scheduling downtime, etc. have all been changed to occur within a pop out window on in-use pages, keeping the relevant page in view at all times.

## Auto-discovery Provides More OS Information, Faster

A new auto-discovery wizard has improved OS detection providing a percentage of accuracy while performing the scan up to 10 times faster than previous versions. Additionally, an optional delay can be used when the scan is being performed to avoid tripping intrusion detection systems.

## Auto-upgrade Components / Wizards

When new component and configuration wizards are available, administrators have the ability to automatically install the latest version, either individually or for all available updates, with a single click.

## New API Allows Programmatic Changes

A new API has been added, allowing you to programmatically create hosts and services, modify configuration values, add and modify user rights, and apply configuration. Additionally, read access is also available for objects, such as statuses, contacts, logs and downtime. Full instructions are also now available in the Help section of the software.

## Intuitive Editing Of Views

Views in XI 5 can be edited and sorted, giving the end user the flexibility to change their Views and rotation order over time.

## Faster Navigation Through Wizards

As the quantity of easy-configuration wizards has increased, we have added filters to quickly find the type of wizard you are looking for, either by category or by the wizard's name.

## Smarter Wizards

WMI, and SNMP wizards have been improved to actually poll the device you are going to monitor and will list all of the drives (mount points), services and processes that can be monitored, allowing you to easily see what is currently running on the server and help decide the items you may want to monitor.

## Wizard Templates Allowing Users To Save Favorite Wizard Defaults

Nagios XI 5 has an option to save user or global templates for wizards, which will save default values for items like contacts, contact groups, host-groups, service-groups, check intervals, etc. Once a template is saved, it can be used on future runs of any configuration wizard to pre-populate the values defined. Templates can be saved per user or on a global basis if the user is an administrator.

## Upgraded LDAP And AD Component

Administrators can now configure multiple AD/LDAP servers to be used for authenticating users. Additionally, users can be imported from AD/LDAP servers into Nagios XI.

## Customize Email Notification Priority

Individual users now have the ability to specify priority level to emails for each type of notification. This allows you to set a high priority level for host down, or service critical notification, leaving other notifications at standard priority. This allows for quick filtering on the end users' mail client.

**You suggested. We listened. 80% of the NagioXI 5 updates came from the valuable feedback of our users.**