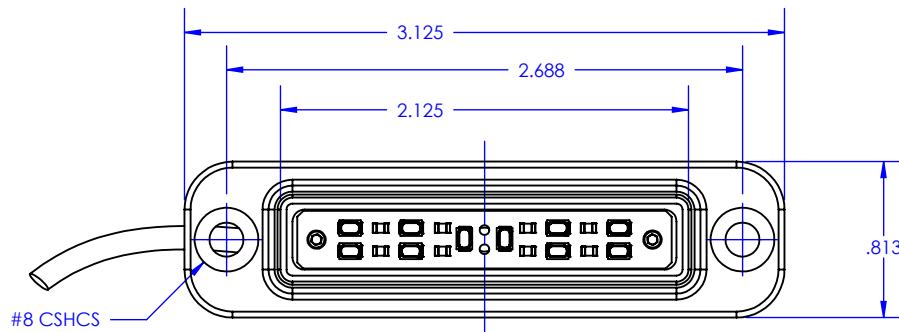
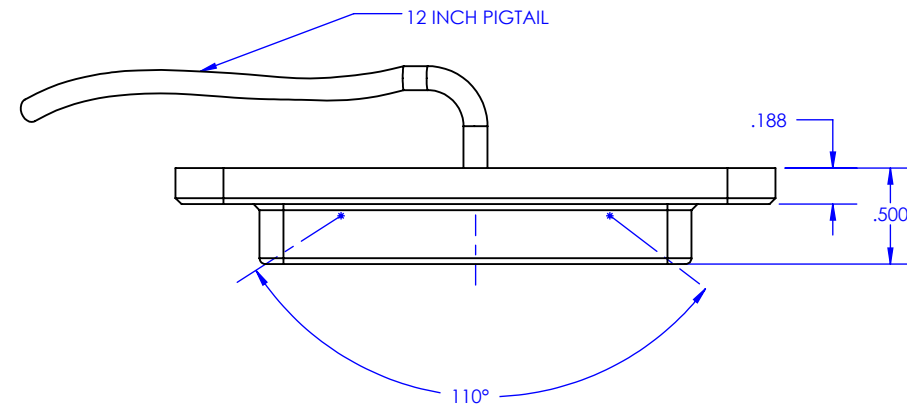
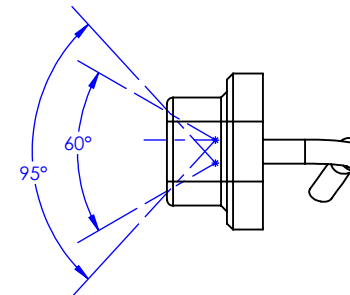


THE INFORMATION CONTAINED IN THIS DRAWING IS THE SOLE PROPERTY OF BLUE WOLF. ANY REPRODUCTION OR DISCLOSURE IN PART OR WHOLE WITHOUT THE WRITTEN PERMISSION OF BLUE WOLF IS PROHIBITED.



	Min	Typ	Max	Units
Voltage		28		Vdc
Input Power		1.4		Watts
Current		50		mA
Lumens - NVIS WHITE		22		lm
Number of LED's		10		
Beam Angle - Non symmetric (As detailed in print)				Deg.
Reverse Polarity Protected - Yes				Vdc
Operating Temp Range	-40/-40		122/50	F/C
Storage Temperature Range	-40/-40		176/80	F/C
Housing Material	6061-T6 Aluminum			
Finish Color	Anodized "Black"			
Total Weight	1.1oz (.03kg)			
Lens	Proprietary			
ROHS Compliant				
Made in the USA				
Wiring Information				
Standard Wiring (12 inches) from fixture				
(+Vdc) M22759/34-22-9 (WHT)				
(+Gnd) M22759/34-22-0 (BLK)				



REV.	DESCRIPTION	DATE	APPROVED
UNLESS OTHERWISE SPECIFIED: DIMENSIONS ARE IN INCHES STANDARD TOLERANCES ARE .X ± .032 .XX ± .010 .XXX ± .005 ANGLES ± 1/2° FRACTIONS ± 1/16 THIRD ANGLE PROJECTION DIM & TOL PER ASME Y14.5-2009		CAD GENERATED DRAWING, DO NOT MANUALLY UPDATE	
		APPROVALS	DATE
		DRAWN D. SAND	9/17/2015
		CHECKED TAP	9/17/2015
		RESP ENG	
MATERIAL	-	MFG ENG	
FINISH	-	QUAL ENG	
DO NOT SCALE DRAWING		SIZE A	DWG. NO. BW-A230
		SCALE 1:1	CAD FILE: SHEET 1 OF 1

