



EXTEND YOUR SUPPLY CHAIN CONTROL WITH AUTOMATED WAREHOUSE MANAGEMENT

LEVERAGE CUTTING-EDGE TECHNOLOGY

Global economic pressures put a strain on logistics planning efforts at warehouses and distribution centers. Supply-and-demand fluctuations can be difficult to predict, potentially resulting in missed opportunities, delayed customer responses and growing workforce inefficiencies. **Apptricity Warehouse** applies cutting-edge technology to the age-old struggle of efficiently managing both your warehouse and inventory from end to end. Built with the hands-on user in mind, this easy-to-use system drives significant process improvements and reduces customer turnaround times.

Through an intuitive and user-friendly interface, *Warehouse* enables you to manage incoming shipments, putaway operations, inventory rotation and movement, fulfillment, and shipping — all with the click of a mouse. Specialized tools help minimize lost revenue from stock-outs, spoilage costs and shrinkage. The solution also multiplies warehouse efficiencies by enabling you to optimize pick locations based on frequency to accelerate the picking and shipping of products.

Mobile radio frequency (RF) devices, radio frequency identification (RFID), data provisioning and sorting equipment give today's warehouse managers a considerable amount of technology at their disposal. Apptricity pulls all this together in an intelligent, computer-driven solution that is ideal for large enterprises as well as smaller, less complex distribution centers. *Warehouse* offers a robust set of features in a service-oriented architecture (SOA) framework with a modular approach that helps mitigate implementation risks.

Gartner

Apptricity Receives Notable Mention in Gartner's Magic Quadrant for Warehouse Management Systems

Gartner Analyst: C. Dwight
Klappich

Date: January 21, 2016

Disclaimer: Gartner does not endorse any vendor, product or service depicted in its research publications, and does not advise technology users to select only those vendors with the highest ratings or other designation. Gartner research publications consist of the opinions of Gartner's research organization and should not be construed as statements of fact. Gartner disclaims all warranties, expressed or implied, with respect to this research, including any warranties of merchantability or fitness for a particular purpose.

EXPAND YOUR VISIBILITY TO INCLUDE YARD MANAGEMENT

The yard is an extension of the physical warehouse. Therefore, a flawless flow of trailers and materials is needed to facilitate effective warehouse management. *Warehouse* supplies the comprehensive yard-management capabilities and streamlined procedures that are essential for automating operations. The solution's robust feature set includes gate check-in and check-out, trailer movement requests, loaded inventory disclosure, and full integration with warehouse activities for just-in-time processing.

Warehouse also extends its intuitive, Web-based interface to the yard. The interface is designed to provide control, compliance, asset visibility and efficiency through tracking and reporting, which apply to both vehicle locations and their contents. The ability to incorporate RFID tags and sensing interrogators provides real-time global visibility into the "who, what and where" of all your organization's yards around the world. In addition, with the integration of Google Earth™ mapping service and maps of your location layouts, *Warehouse* presents visual information like no other system can.

The days of isolated, standalone data silos are gone. A high level of integration between transportation management and warehouse management systems is an imperative for real-time visibility.

"No More Silos for Transportation and Warehouse Management Systems."



Apptricity is a registered trademark of Apptricity Corporation. Android is a registered trademark of Google Inc. iOS is a registered trademark of Cisco Technology, Inc. All other trademarks, registered trademarks and service marks are the property of their respective owners.



ACHIEVE START-TO-FINISH AWARENESS AND CONTROL

Conveniently accessible with a Web browser or mobile device, *Warehouse* covers every phase of warehouse and distribution center management.

Inbound receiving: The solution facilitates the tracking of inbound items using desktop computers or wireless RF devices and supplies configurable validation points. Full license plate functionality with opportunistic cross-docking is included. Integration with financial systems, legacy systems and automation systems such as automated storage and retrieval systems (ASRSs) extends control to critical areas of your enterprise.

Inventory Management: *Warehouse* enables you to configure the system to manage cycle counts according to best practices. The solution also supports a variety of methods for taking physical inventory, including RF mobile devices and/or paper solutions. Inventory adjustment and reverse logistics capabilities, as well as updates reflecting status changes are available across all sites and facilities.

Administration: The easy-to-use interface is designed for efficiency, few screen changes and minimal system modifications. Shipment management is smooth and easy.

Putaway: *Warehouse* streamlines your putaway operations, providing for system directed wireless putaway with configurable rules and validation points. A number of industry best practice rules are also included, such as fewest locations, nearest location, zone logic and fixed location.

Picking and Shipping: The system accommodates multiple picking methods, including ASRS, carousel, pick and put-to-light, pick-to-belt, and a-frame dispensing systems. Full-truckload, less-than-truckload (LTL), intermodal and parcel shipping are also supported.

AUTOMATE WAREHOUSE OPERATIONS TO OPTIMIZE EFFICIENCIES

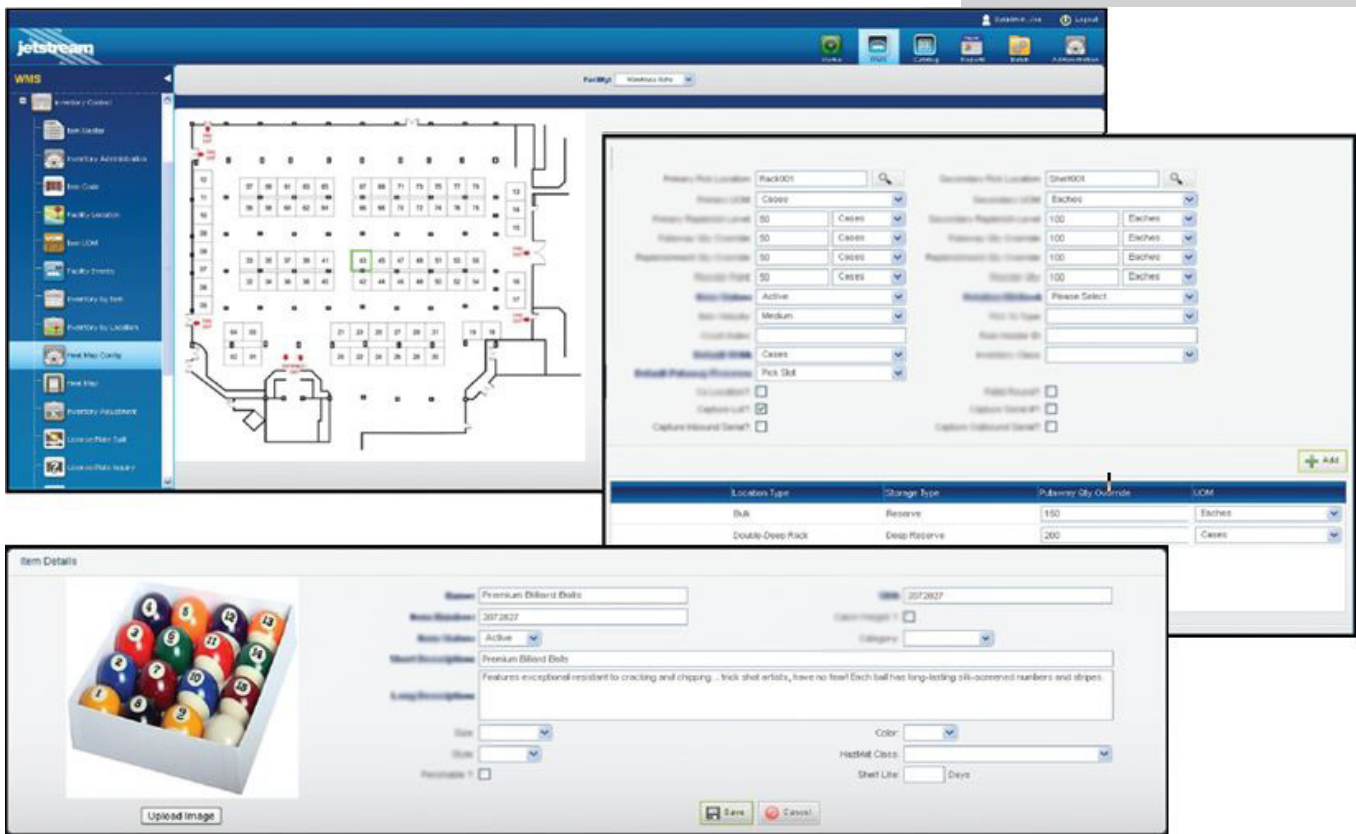
Why continuously disrupt your supply chain with complications from inefficient or cumbersome warehouse operations? Don't lose revenue opportunities due to lost or stolen items or let your warehouse become a graveyard for spoiled inventory! *Warehouse* provides full visibility for receiving, inventory, shipments and even yard management. With barcode, RF devices and RFID technology at your disposal — as well as mobile support — you gain complete oversight and control along with money-saving efficiencies. At Apptricity, we strive to simplify your mission-critical supply chain processes by providing you with focused solutions that help you manage and grow your business. You can also extend the value of *Warehouse* by integrating with other solutions in the Apptricity Supply Chain and Apptricity Spend Management solution suites.

About Apptricity

Apptricity Corporation provides mission-critical supply chain management and spend management solutions to small, midsize and global enterprises and government organizations worldwide. Apptricity software and solutions mobilize any enterprise with unprecedented levels of real-time information and business intelligence so management has visibility into every action and transaction within the enterprise and among its partners, customers and suppliers. Powered by Apptricity JetStream platform, our solutions enhance legacy enterprise applications and extend the value of information technology investments. Our platform enables us to address the universal objectives of business, government and the military with accelerated business processes and command visibility.

Figure 1: Providing real-time, at-a-glance visibility for effective warehouse management, *Warehouse* puts you in control with automated inventory administration tools, heat maps to illustrate product access frequency, product master lists, detailed item records and more.

For more information, visit <http://www.apptricity.com>.



Apptricity is a registered trademark of Apptricity Corporation. Android is a registered trademark of Google Inc. iOS is a registered trademark of Cisco Technology, Inc. All other trademarks, registered trademarks and service marks are the property of their respective owners.