



# Service Provider Hosted Multi-Tenant & Dedicated Platforms

Offering Service Providers Escalating Revenue, Increased Hosting Opportunities & the Highest ROI at the Lowest Cost

MessageSolution's award-winning MSP-Hosted Multi-Tenant and Dedicated Platforms enable MSP/ISP partners to provide SME and large scale organizations with archiving and eDiscovery solutions with enterprise features. The MessageSolution Platform offers advance information archiving and eDiscovery for email, SharePoint or file system servers.

## Become a MessageSolution Hosting Partner

- ✓ **Increased ROI**  
Reduce Storage, Hardware and Operational Costs
- ✓ **Additional Revenue Opportunities**  
Through Professional Engineering, Consultation and Migration Services
- ✓ **High Performance Archiving & eDiscovery for Clients**
- ✓ **No SQL/3<sup>rd</sup> Party Software Requirements**
- ✓ **Supports All Major Email Environments**  
Exchange, GroupWise, Domino, Linux-Based Servers and more
- ✓ **Global, Online Implementation & Technical Support**
- ✓ **3+ Years in Gartner's Magic Quadrant Report**
- ✓ **Pin Point Mailbox Restore for Exchange & Office 365**

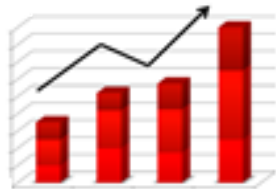
## MessageSolution MSP-Hosted Platforms

First in the market, the MessageSolution MSP-Hosted Platform is designed to **increase service provider revenue by over 300%** with enterprise-class archiving and eDiscovery functionality for SME organizations. Archive for hundreds of thousands of users in a clustered environment or 25,000+ users from multiple organizations on one server. This drastically reduces hardware and storage costs.

Give each client an independent archiving experience with little to no daily maintenance, on-line global support and a highly interactive data store with granular access controls. While the multi-tenant platform is ideal for SME clients, MessageSolution also offers an MSP-hosted dedicated platform for enterprise organizations.

### Benefits Include:

- Leverage Marketing and Sales Collateral
- Increased Revenue Opportunities
- White Labeling and Solution Rebranding
- Sales Support & Technical Product Demos
- Online Global Deployment
- **Enhanced Technical Support**



## Increased Revenue Opportunities & Partner Benefits

MessageSolution's Platform as a Service (PaaS) model is designed to increase offered archiving and eDiscovery services, profitability, client retention and more. MessageSolution Platforms also provide additional MSP revenue opportunities through professional engineering, configuration or consultation services.

## MessageSolution's Hosted Multi-Tenant & Dedicated Platforms

### Hosted By:

- Managed Service Providers and Internet Service Providers (MSP/ISPs)
- Email Hosting Firms, Datacenters
- Online Security Hosting Providers (filtering, anti-spam/virus)
- Online Backup Solution Providers
- Cloud Providers, IT Consultants, and System Integrators
- Technical Service Providers

## 5 Unique Login Levels

1. End-User Access
2. Customer Administrator Access
3. MSP Master Administrator Access
4. VAR Access
5. Configurable 3<sup>rd</sup> Party Legal/Auditor Access

## MessageSolution System Requirements

Pentium IV 2.0 GHz (Minimum)  
Processor equivalent to email server recommended  
2-4GB RAM  
40GB hard disk (additional space or disk array, NAS, SAN for storage)  
Internet Explorer 6+, Firefox or Chrome (User)  
Network Interface Card  
DNS Service access  
Linux 2.6+, Windows 2000+, Solaris





## MSP-Hosted Information Archiving, eDiscovery & Data Migration

### Hosted Multi-Tenant Platform

#### for SME Organizations

For small to mid-market organizations, the MessageSolution multi-tenant archiving platform saves time and money by drastically reducing hardware and storage costs. While multiple end clients are run on the same system, each client has a completely separated archiving experience.

### Dedicated Hosting Platform

#### for Enterprise Organizations

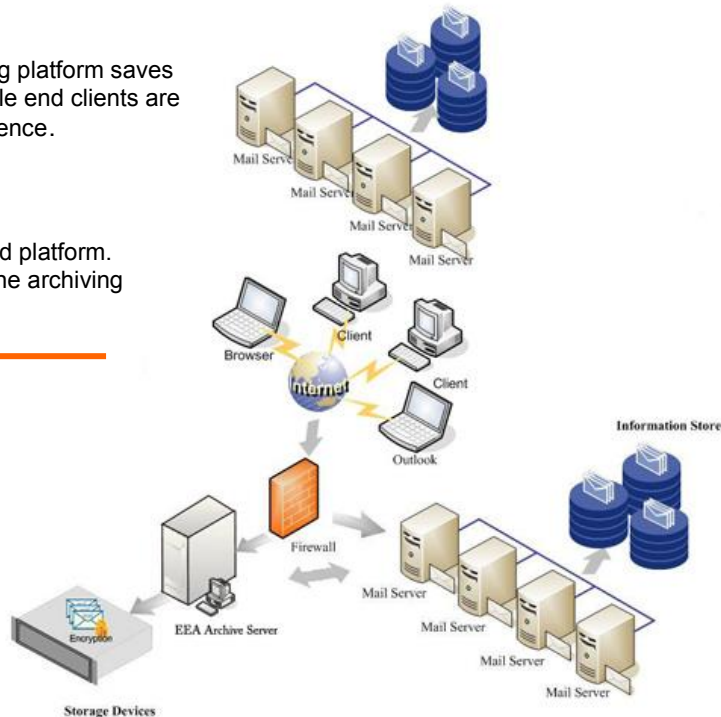
For large-scale enterprise organizations, MessageSolution offers dedicated hosted platform. Dedicated hosting provides increased functionality, archiving for 25K+ users on one archiving server.

### Supports Varied & Clustered Email Server Environments

MessageSolution Enterprise Email Archive Multi-Tenancy & Dedicated Hosted Platforms are uniquely designed to support partners with varying email servers including Exchange, Novell, IBM, Office 365, Google App and more.

MessageSolution archiving system can also be deployed cross platform on Windows or Linux OS.

MessageSolution also supports archiving for multi-server email environments; clustered email servers, servers in different geographical locations or multiple email providers.

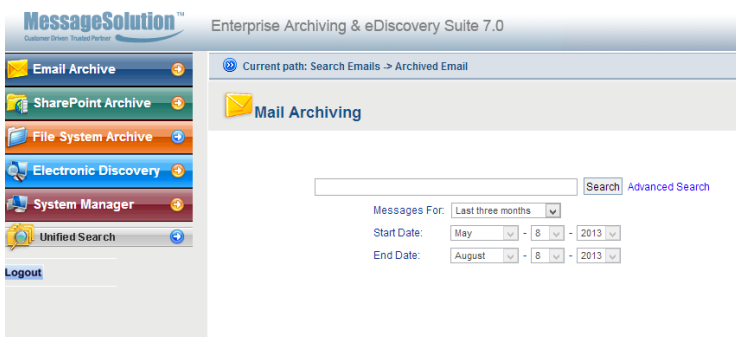


MessageSolution  
Multi-Tenant Platform Architecture

### MessageSolution Data Migration

MessageSolution offers several migration options to seamlessly import and migrate client data. Data migration is another way to increase revenue opportunities with the MessageSolution Platform.

1. Migrate Email Data from Legacy Email Servers  
i.e. from Exchange 2007 to Exchange 2010
2. Migrate from PST/NSF/GroupWise Files and Public Folders
3. Cross-Platform Email Migration  
i.e. from Domino or GroupWise to Exchange
4. Migrate Data from Other Archiving Solutions



MessageSolution Enterprise Information Archive 7.0  
Dedicated-Hosted Platform - Web-Based UI

MessageSolution also offers direct Parallels Provisioning System integration. Parallels Automation contains a complete provisioning system to deliver business automation management and a billing/reporting system.



### Transitional Hosting Program

#### Hosted in MessageSolution Data Centers First, Then Transitioned to MSP-Hosted Solution

MessageSolution leverages a unique hosting partner program to implement hosted archiving as painlessly as possible. For the first period of service, MessageSolution will host end-client data in our global cloud network and manage the archiving server. The MessageSolution technical support and development teams work with the MSP Partner to dually manage and support their clients while simultaneously deploying the multi-tenant or dedicated platforms in the MSP datacenter. Once comfortable with the platform and data workflow, Partners can incrementally take over hosting duties and management of client archiving and transition to a true hosted platform.



### About MessageSolution

MessageSolution, an industry leader in enterprise information archiving and eDiscovery, provides Cloud, on-premise and MSP/ISP-hosted, multi-tenant platforms for email, SharePoint, and file server environments. Manage compliance, legal and storage needs. MessageSolution is a Microsoft Gold Partner and recipient of multiple MExchange.org Readers' Choice Awards for best Exchange Archiving Platform.

### MessageSolution, Inc.

1851 McCarthy Blvd. Suite 105  
Milpitas, CA 95035

www.MessageSolution.com

Phone: (408) 383-0100

Fax: (408) 383-0222

Email: salesdept@messagesolution.com