

The World's Longest Ethernet Cable™

Network Connectivity Appliances for Transparent and Secure VoIP/UC, Site-to-Site Enterprise, MPLS Replacement & VPN Solutions

Solution Highlights

Challenge

- Need to connect remote devices, users, apps to the Central Site/HQ
- MPLS / Leased-Lines too expensive
- Apps don't work correctly or are blocked -Traditional VPN is broken
- Incomplete Security, Privacy & Control
- Dynamic IP based connectivity

Solution

- Use any IP connection or Internet infrastructure including xDSL, vSAT, CableModem, RF/SDR Radio
- Full functionality, access, and transparency to all apps, devices, peripherals, & users
- Full Security & Privacy with X.509 Certs/AES256 with Perfect Forward Secrecy

Benefits

- Turn-up remote offices in minutes
- Transparent to ALL data including VoIP, Video/UC, VLANs, SCADA
- Works with Dynamic IP - No Static Public IP required
- Network Access Control (NAC)
- Full End-to-End manageability
- All data is between your appliances
- Lowest Cost – no recurring charges

The World's Longest Ethernet Cable™

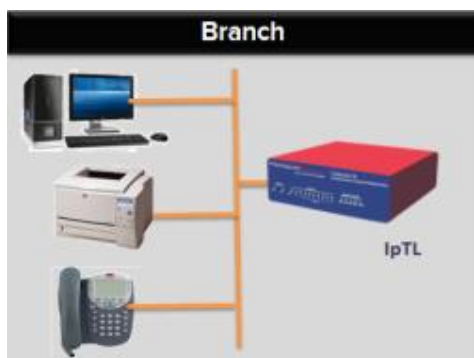
IpTL develops appliances which enable complete and fully functional network connectivity easily, securely and automatically. For enterprises, machines, applications, and users, IpTL operates over any commodity Internet connection and enables Ethernet connectivity through dynamic IP, firewalls, and private IP infrastructures. With full in-band and out-of-band management, only IpTL can give you the network you want with the network you have.

IpTL is not a “virtual” network; it *is* the network

Deployed as a symmetric solution — or an IpTL appliance on each end — our appliances can be deployed supporting emerging and legacy applications without difficulty. Unlike older VPN technologies (IPSec, PPTP, GRE, etc.) which do not provide full network functionality, accessibility, or security, IpTL brings the whole network to the device. Connect over the WAN:

- SIP PBXs & VoIP hardphones
- Unified Communications Systems & Video-over-IP
- VLAN, VLAN trunking, Multicast, Q-in-Q, MAC-in-MAC
- Network Printers connecting to Cloud applications
- File Sharing, NAS, & Sharepoint
- Mobile, Workgroup, and VDI Users
- Non-IP protocols like Industrial SCADA & MODBUS
- MPLS/VPLS Leased-Line replacement
- Failover/Network redundancy for existing Leased-Lines
- Link bonding and Load Balancing

IpTL delivers easy, secure, and transparent connectivity to any device, application or user anywhere just like the **World's Longest Ethernet Cable™**



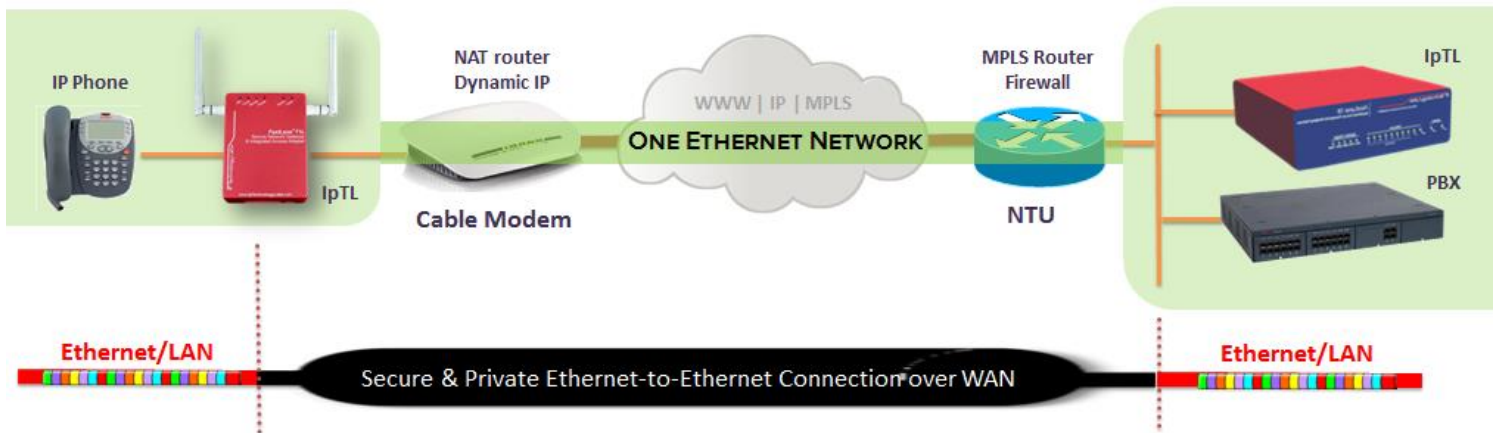
IpTL FastLane™ appliances bring advantages not found in other solutions. IpTL includes our patent pending technologies to automatically and securely make and keep your links up. IpTL's functionality enables all remote locations and network devices to seamlessly "appear" as if they are on the same Local Area Network.

Integrated management facilities enable full touch control in-band or out-of-band. This permits monitoring, policy distribution, and troubleshooting anywhere in the world.

IpTL *FastLane*™ appliances are integrated with the tools to ensure integration into your network without a rip-out, redesign, or reconfiguration

IpTL Technology Feature	Advantage / Benefit
AutoConnect™	Creates links behind firewalls
IPShare™	Overlapping IP address Solution
Captive Portal Login	Seamless one-stage login onto Hotel, Airport & Hospitality Captive Portals
RealTimeResource™	Integrated Dynamic IP DNS resolution
ReflexAC™ Multilink Bonding	Automatic Failover/Fallback, Bandwidth aggregation, & LinkRolling™
Clientless operation	No software to install or maintain
Endpoint Management	See and touch all appliances even behind the firewall/NAT
TunnelCloak™	Transport identification & fingerprinting obfuscation w/ rolling code
Content Addressable Switching (CAS) NAC	User and application access with traffic steering – route or block based on traffic, URL, content, etc.

Typical Application



IpTL FastLane™ Appliance Product Line

Mobility	Workgroup	M2M/DR-BC	Office	Office+	Enterprise & Cloud
1 Tunnel Fixed			8 Tunnels Fixed	1-25 Tunnels	1,000's Tunnels
Model 7 USB, WiFi, Eth • Single User	Model 71LW WiFi, Dual Wired Ethernet • 10-20 Users • Max 128 WiFi • Single Tunnel	Model 71-04 Integrated 4GLTE + Dual Wired Eth. • Single Tunnel • Auto Dial-Backup • Internal SIM	Model 72/75/78 4X GIGE; PoE input; USB dial • 100-250 users • Office VoIP/UC Integration • Full Access Router • Metal Enclosure	Model 770 4X GIGE+USB dial • 1-25 Connections • Connections are license scalable • Office VoIP UC • Full Router • Metal Enclosure • Easily Expandable for additional sites	Model 79R 1U Rack Mount • 1U form Factor • 1,000's of users • 6x GigE ports Model 70v • VMWare ESX • Virtual Box • Hyper-V • Scales System