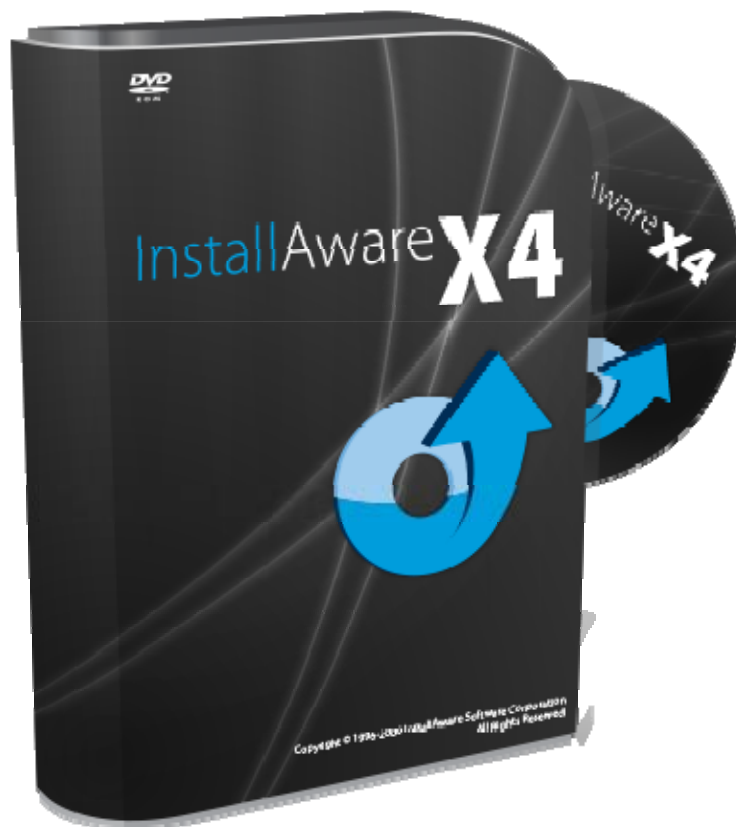


InstallAware X4

Reviewer's Guide

April 2016



The information contained in this document represents the current view of InstallAware Software on the issues discussed as of the date of publication. Because InstallAware must respond to changing market conditions, it should not be interpreted to be a commitment on the part of InstallAware, and InstallAware cannot guarantee the accuracy of any information presented after the date of publication.

This guide is for informational purposes only. INSTALLAWARE MAKES NO WARRANTIES, EXPRESS OR IMPLIED, AS TO THE INFORMATION IN THIS DOCUMENT.

InstallAware may have patents, patent applications, trademarks, copyrights, or other intellectual property rights covering subject matter in this document. Except as expressly provided in any written license agreement from InstallAware, the furnishing of this document does not give you any license to these patents, trademarks, copyrights, or other intellectual property.

© 2016 InstallAware Software. All rights reserved.

InstallAware, MSIcon, Genuine Scripting for Windows Installer, WebAware Installations, Web Media Blocks, Partial Web Deploy, and One-Click Patching are either registered trademarks or trademarks of InstallAware Software in the United States and/or other countries.

Microsoft, Windows, and other Microsoft product names are trademarks or registered trademarks of Microsoft Corporation in the U.S. and other countries. All other marks are the property of their respective owners.

Contents

Overview	4
Introduction	4
Product Description	4
Contact Information.....	4
InstallAware Highlights	5
New and Interesting Features of InstallAware X4	5
Unique Features and Key Benefits for Developers	7
InstallAware X4 Two-Way Integrated IDE	8
What Types of Setups are Created with InstallAware X4?	9
Setup Development.....	11
Projects in InstallAware X4	12
Native Code Setups in InstallAware X4	13
Deploying Setups.....	14
Additional Advanced Tools in InstallAware	15
Basic Introduction	21
About InstallAware Software	22

Overview

Introduction

Thank you for your interest in reviewing InstallAware X4, the cutting-edge software installation authoring tool. This guide will give you an overview of some key benefits that are available only with InstallAware.

Product Description

InstallAware X4 is the fastest and most scalable way to deliver ultra-rich, ultra-fast Windows installations. Dramatically reduce coding time and create installers tens of times faster with MSIcode based development and a fully visual two-way RAD IDE. Completely eliminate the need for Windows Installer training, save on bandwidth and support costs, and build smart installers which adapt to their environment at runtime.

Contact Information

We are here to support you throughout your evaluation period – and beyond. Please do not hesitate to contact us anytime.

Technical Assistance: support@installaware.com

Sales Inquiries: sales@installaware.com

InstallAware Highlights

New and Interesting Features of InstallAware X4

- **Windows Store Bridge** – InstallAware X4 is the first installer to bridge existing **Win32, Win64, and .NET applications** to the Windows Store. InstallAware X4 includes a **Universal Windows** app as a new project type, which gets end-users from the Windows Store to all of your existing apps in a single click.
- **Social Networking** – InstallAware X4 introduces its social plug-ins: **Tweet to Twitter** and **Share on Facebook**. Using REST APIs to authenticate end-users at any point in your installation, InstallAware X4's social plug-ins can even make it mandatory for your end-users to successfully complete postings before they may move forward with your installation.
- **SHA 256 Code Signing** – InstallAware X4 solves Microsoft's **SHA 256 code signing riddle** for 2016 and beyond. InstallAware X4 analyzes the operating system hosting your build environment, the type of files being signed, and whether it already has a code signature before deciding on whether to single sign, double sign, or even skip signing a file.
- **InstantInstall Acceleration** – InstallAware X4 is the fastest installer for Windows. New InstantInstall technology powered by InstallAware X4's Native Code Setup Engine exponentially reduces installation times when compared to every other Windows Installer.
- **64 bit Compression** – Reduce download sizes a further 30% on top of their already optimal sizes when compared to previous InstallAware versions. Achieve actual compression savings of up to 90% on all your application files and data. Compress runtimes such as Microsoft SQL Server 2014 SP1 to half their already compressed, native-Microsoft size.
- **Windows 10 Eco System** – InstallAware X4 includes built-in application runtimes and technology support for the entire Windows 10 Eco System, including redistributables for .NET Framework 4.6.1, SQL Server Express 2014 SP1, the Visual C++ 14 Update 1 runtime, IIS Express, Crystal Reports, and more.

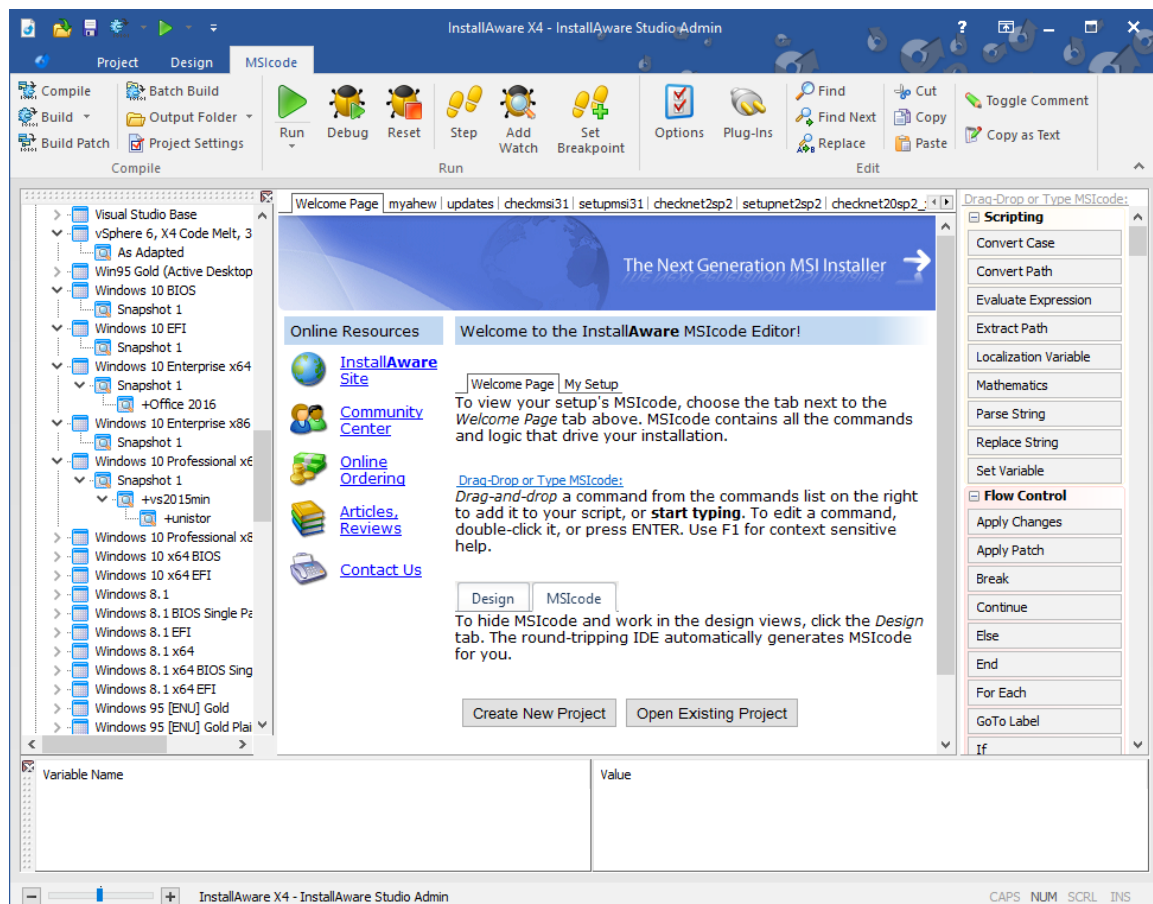
- **Visual Studio Integration** – InstallAware X4 integrates with Visual Studio versions 2015, 2013, 2012, 2010, 2008, 2005, and 2003; seamlessly creating and building setups (and App-V application virtualization packages) for all your solutions right within the Visual Studio IDE.
- **Team Foundation Server Integration** – The InstallAware X4 IDE is fully integrated with Microsoft Team Foundation Server versions 2015, 2013, 2012, and 2010. Check-In and Check-Out setup solutions with a single click in InstallAware, collaborate on your setup solutions with local or globally distributed teams.
- **Sliding and Fading Wizard Animations** – InstallAware X4 is the only software installer featuring smooth transition effects between installation wizard pages, helping you make a lasting positive first impression with your app-savvy end-users.
- **Application Pinning** – InstallAware X4 is the only Windows Installer with automatic, programmatic pinning of your applications to the new Windows 10 Start Menu in the live tiles section, without having to go through the Windows Store – something Microsoft claims to have made impossible. InstallAware works hard to give you every opportunity to make your product shine.
- **IDE Editor Zoom** – The InstallAware X4 IDE features a new track bar, letting you instantly zoom in and out of your script with eagle eyes to help you find what you are looking for.
- **Script Functions** – The InstallAware X4 scripting language features an enhanced **Include Script** command together with a brand new **Return from Include Script** command, making it a snap for you to program your own subroutines in your setup script, with their own return values.

Unique Features and Key Benefits for Developers

- Built on an excellent abstraction of Windows Installer called MSIcode. MSIcode is a human readable, conditionally flowing setup script, similar to a batch file. Your MSIcode script is automatically compiled into a logo compliant MSI database at build time, eliminating all need for Windows Installer training and the need to understand its complex relational database structure.
- MSIcode is more than just another descriptive language for creating setup packages: it is a layer on top of Windows Installer which directly modifies Windows Installer's runtime behavior.
- No scripting engine is required or pre-installed at runtime. Setups you build run on all 32 bit and 64 bit platforms, from the first release of Windows XP to the latest Windows 10 Server 64 bit – all with the same setup binary.
- Your MSIcode script “magically branches” according to your underlying scripted logic at runtime. You may even create/edit/delete your setup features at runtime, based on system conditions or online live license authentication. This helps you build and maintain a single installer (and a single setup project) for all of your product editions, languages, and features.
- Securely download optional application components using Partial Web Deployment. Segment your setup files into multiple online and offline Web Media Blocks. Optional Web Media Blocks are downloaded only if necessary. A partially web deployed setup does NOT mandate an Internet connection if online Web Media Blocks have not been selected for installation. Web Media Blocks may be shared by more than one setup and are highly compressed.
- One-Click Patching: No special patch project types are required to create patches. Point to the built binaries of your old setup versions to build patches in a single click. Use MSIcode scripting to customize patch behavior at runtime, and perform additional custom tasks.
- Deploy an unlimited number of web updates to your installed customer base. Filter patches using MSIcode to preserve your business logic.
- “Shell” to Third Party Setups from your installations. Capture and display native, interactive installation progress in your own setup dialogs – never launching external setup windows means your dependencies are always installed with the correct parameters and as an integral part of your master installation.
- Design stunning user interfaces with the 43 built-in dialog controls. Easily pass MSIcode variables between your setup dialogs and script. Capture and submit business intelligence directly within your (un)installations, without risking a click-away on web pages.
- In addition to runtime setup customization in MSIcode, use MSIcode Compiler Variables to conditionally include/exclude files and logic from your setups at build time.

InstallAware X4 Two-Way Integrated IDE

InstallAware X4 is the only way to deliver the fastest, most scalable, and most reliable Windows installations with the richest user interfaces. The two-way integrated IDE dramatically reduces coding time. The Design tab rapidly prototypes your setup, while the IDE seamlessly emits MSIcode in the background. Switch to the MSIcode tab and inject custom code exactly where needed. The visual and script parts of InstallAware projects are NOT disjoint, separate entities. Unlike other installation tools, the MSIcode script drives the entirety of your installation, has no hard coded elements, and is automatically emitted for you by the IDE as you use design views. This means that when you need to drop down to the code view after doing a lot of visual design work, everything you have done so far is immediately accessible and editable. The script is not a separate entity that is divorced from the actual files, registry keys, and other elements that comprise your installation.



What Types of Setups are Created with InstallAware X4?

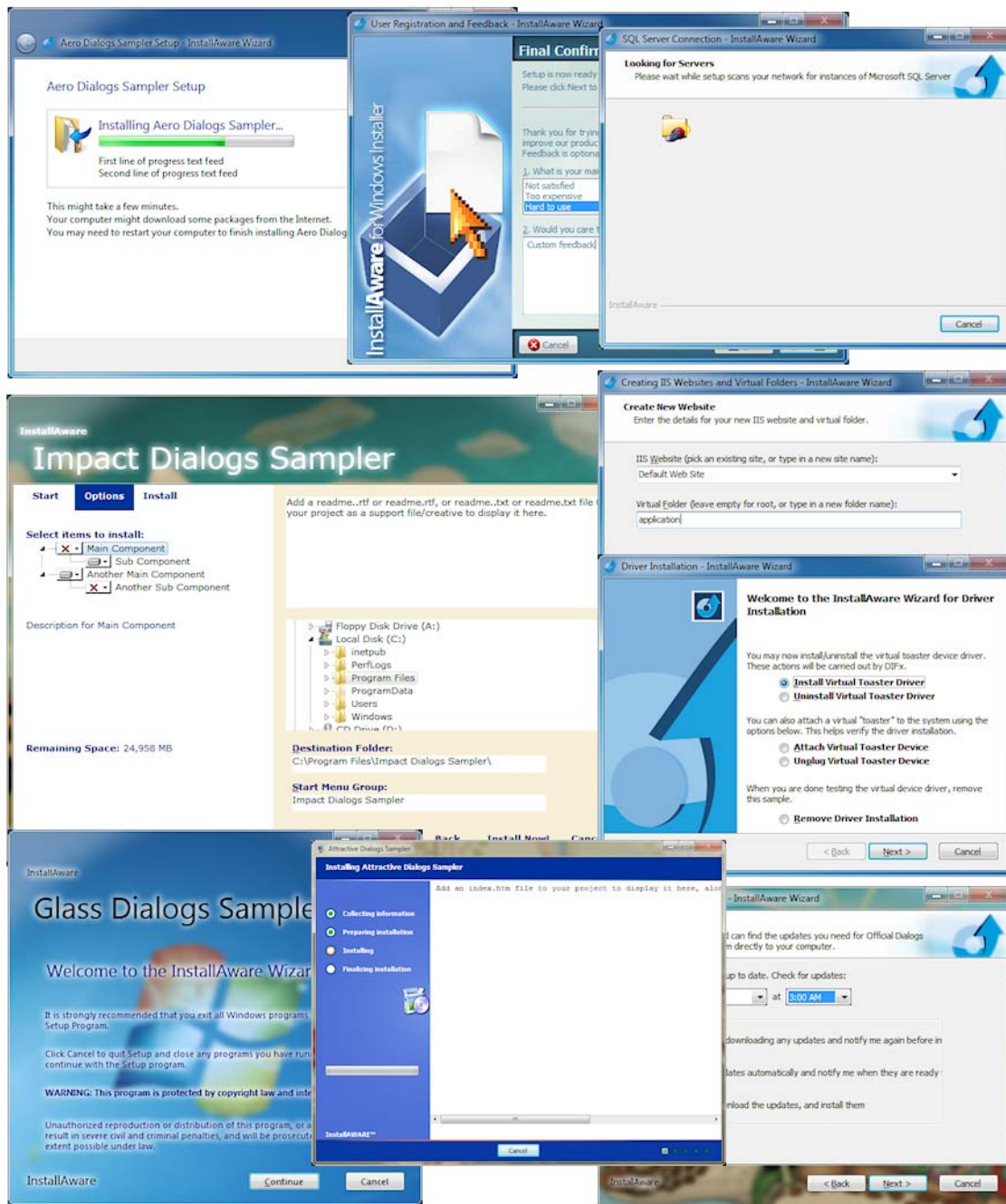
Mission-critical enterprise installs to complex desktop applications, repackaged, virtualized, or combined suite installations, driver installers, software development tools, and games; OEM, web, and database applications. Some hit commercial games like Crysis and compilers like Delphi, as well as OEM installations like those by Sony and BestBuy have been built using InstallAware.

InstallAware X4 unlocks the potential of the developer's imagination and allows them to focus on the solution without having to worry about the underlying confines and limitations of Windows Installer. InstallAware saves developers countless hours of Windows Installer training, and especially the frustration of having to work around the straitjacket setup authoring experience that is found with other environments.

The Native Code Setup Engine in InstallAware X4 exponentially increases the runtime capabilities of setups, completely side-stepping all limitations of Windows Installer, whilst not requiring platform exclusivity – setups may even switch between Native Code and Windows Installer setup engines at runtime, as many times as needed. InstallAware's Native Engine supports extra-long file system paths, reads from and writes to protected file system and registry locations while retaining their security settings, runs in Windows Safe Mode where Windows Installer is disabled, performs setups an order of magnitude faster than Windows Installer itself, and even supports multiple simultaneous installations (which is, again, something Windows Installer itself is not capable of doing).

Because InstallAware generates standalone Windows executables without large and cumbersome runtime dependencies like Java or .NET, or script engines like InstallScript that need to be pre-installed (often failing with cryptic error messages), InstallAware setups always work on the largest possible number of target systems, out of the box, making sure your relationship with your customers starts off on the right footing. Now with the new wizard transition special effects in InstallAware X4, your setups are as visually pleasing as they are solid under the hood.

Setups may even be built on the cloud with InstallAware X4, serving custom setup solutions from, for example, ASP.NET websites. Any built InstallAware X4 setup may “self-replicate” itself across an entire Active Directory network – without even requiring any client or server software; enabling the construction of private or public clouds, and facilitating the instant delivery of any number of third-party nested EXE/MSI based setups as part of the master, self-replicating InstallAware installer. Having to spend tens of hours repackaging EXE installers just to convert them to an MSI format is now a thing of the past.



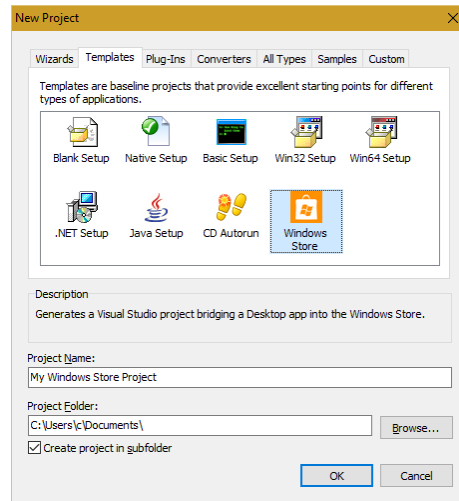
Setup Development

After installing InstallAware, you will have the opportunity to decide what type of development you want to do.

- Setup repackaging based on system snapshots or direct capture
- Direct import of Windows Installer setups and merge modules
- Direct import of InstallShield, Wise, and other popular setup projects
- Highly custom setups started with a completely empty project
- CD/DVD/Blu-Ray Autorun menus
- Setups that use the InstallAware Native Code Setup Engine
- Setups that use the Windows Installer Setup Engine
- Setups that use both engines with HIT (Hybrid Installation Technology)
- Win32 and Win64 application installers
- .NET and Java application installers, with optional download and installation of their frameworks
- Web update clients
- Multiple instance setups (installing more than one copy of the same application simultaneously)
- Obtaining end-user feedback, collecting and submitting business intelligence
- Validating serial numbers, both offline and online
- Localized setups
- Database installations that configure a named database instance and run a SQL script against it
- Web server installations that configure a web server and create websites/virtual folders on it
- Driver installations
- Setups which optionally download features from the Internet while NOT mandating a connection
- Setups which can dynamically define and delete setup features at runtime
- Binary byte level patches
- Virtualized applications
- Custom plug-ins which enhance the existing capabilities of the InstallAware MSIcode language
- Calling functions from any system DLL or custom DLL directly
- Bootstrappers which seamlessly install third party application frameworks and runtimes
- Checking for and removing old product versions, including those installed without InstallAware
- Checking for and installing technology frameworks, runtimes, and database/web servers
- Delivering dynamically updated product bundle offers with your application
- And many others

Projects in InstallAware X4

Once you start InstallAware X4, the first thing you will need to do is create a project.



This can be accomplished by clicking the InstallAware button and clicking the *New Project | Other* menu item. This is the setup solution gallery and it displays all of the different types of solutions that can be created. If you are not reviewing the Studio Admin edition with all features installed, some solutions may not be available – just run InstallAware setup again and choose to do a full install of Studio Admin.

- **Wizards** – A list of standard wizards which guide you step by step through setup project creation, including wizards which let you convert pre-existing setups (without access to their source codes).
- **Templates** – InstallAware projects which can be fleshed out in the IDE, including Win32, Win64, .NET, and Java application support; as well as highly custom applications such as Autorun apps.
- **Plug-Ins** – Create plug-ins that integrate with InstallAware’s MSIcode script, including rendering a custom line of script and participating in the setup build process. You may also use managed languages such as .NET to create InstallAware MSIcode plug-ins.
- **Converters** – Upgrade existing setups (for which you do have the source codes) into ready to build InstallAware projects in a single click.
- **Samples** – Various sample projects illustrating useful InstallAware programming concepts.
- **Custom** – Promote any existing InstallAware project into a generic template, maximizing code re-use and enforcing your organization’s installer standards. Inherit new projects from your self-made setup templates.

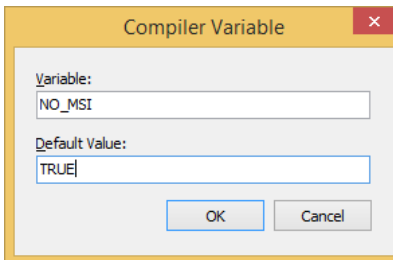
Native Code Setups in InstallAware X4

If you have previously used InstallAware, you will be pleased that all it takes is a single line of code to upgrade your existing projects to use the Native Code Setup Engine instead of Windows Installer:

```
1  
2  Comment: Enable Native Engine  
3  Set Variable NATIVE_ENGINE to TRUE  
4  
5  Comment: Enable Windows Installer Engine  
6  Set Variable NATIVE_ENGINE to FALSE  
7
```

As in the code example above, changing the value of the **NATIVE_ENGINE** variable between **TRUE** and **FALSE** will toggle any installation between the Native Code and Windows Installer setup engines. This process may be repeated as many times as required in your installation.

InstallAware does not lock you into any particular setup authoring platform and gives you the power of choosing whichever setup engine is best suited for your requirements. Best of all, your existing scripts – all of them – are upgraded to work with the Native Engine in just one line of code!

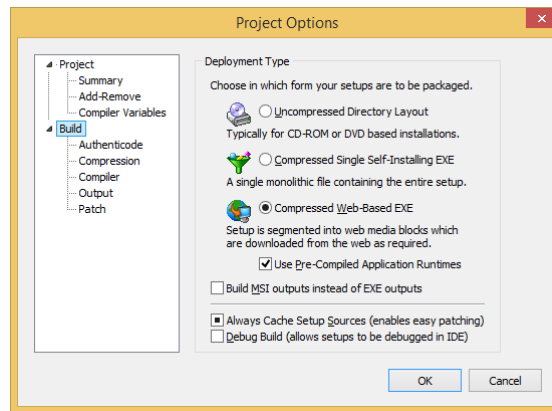


If you are sure that you will not be using the Windows Installer engine at all, you may prefer to skip building MSI files as part of your build process. This will reduce the size of your setup payload, and speed up the build process significantly. Just set the **NO_MSI** compiler variable to **TRUE**.

Please see the help file topics *Pre-Defined Compiler Variables* and *Pre-Defined Variables* for many additional build time and runtime tweaks that can be applied to your setups for increasing performance and reliability. Remember, nothing is hard-coded in InstallAware!

Deploying Setups

InstallAware offers a variety of build modes for your existing projects, all based on the same source files. These settings are accessible in the *Project Options* window.

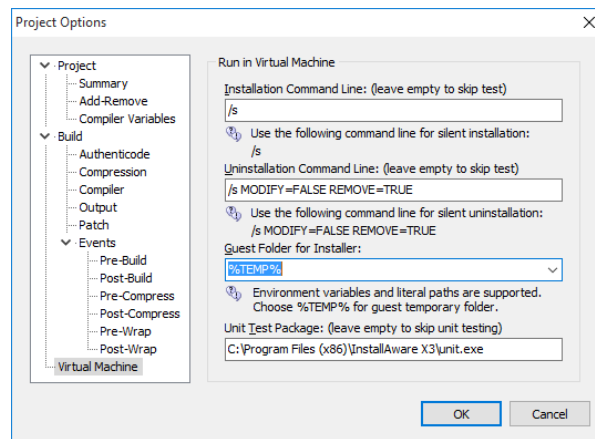


- **Uncompressed Directory Layout** is the fastest build option and ideal to use when you are coding and debugging your setups. It is also the best build mode to use if you will be distributing your setups on optical media or thumb drives, or other medium which can contain multiple folders.
- **Compressed Single Self-Installing EXE** takes the uncompressed output and packs it all inside a single, self-extracting executable. This is ideal for cases when a single monolithic file is required. All files are compressed to the smallest possible size.
- **Compressed Web Based EXE** is ideal for online distribution. The output is a compressed self-extracting executable, as well as several 7zip files which are the web media blocks containing your optional setup features. Unlike other web deployment schemes, the 7zip files are not mandatory and will be downloaded only if they are selected by the end-user for installation (and have not been previously downloaded). You get to precisely choose which source files are placed inside web media blocks, and which go inside the self-extracting “offline” setup executable.
- **Patch** is used to build your existing setup project as a patch, without having to create a new patch project type. Through the use of compiler variables, parts of your MSIcode script are conditionally included or excluded when building setups as patches. This helps you inject additional business and setup logic to the patch process whilst avoiding the need to create a new patch project.
- **Build MSI outputs instead of EXE outputs** converts any of the above EXE outputs into a Group Policy/Active Directory compatible MSI file, even when your original setup is not based on Windows Installer technology and uses the Native Engine instead.

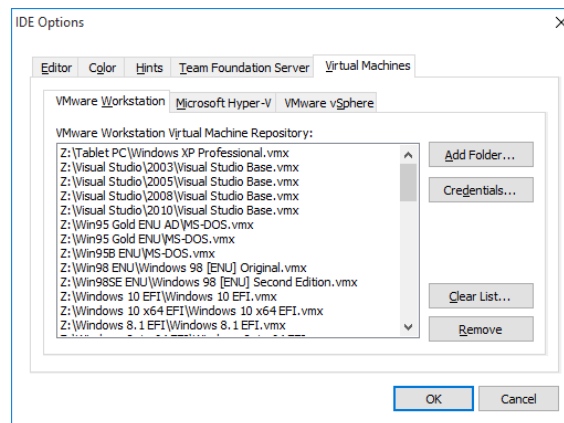
Additional Advanced Tools in InstallAware

InstallAware X4 includes many features beyond those covered in this Reviewer's Guide. There are a few that deserve special mention, just to remind you, the reviewer, of the power of these tools and the value they add to the InstallAware setup authoring environment.

- Automated Virtual Machine Testing** – Just double-click any target virtual machine snapshot in the Project Manager window, and InstallAware launches the selected guest operating system and initiates a unit test with your desired command line. Launch any additional number of tests and watch them take place simultaneously.



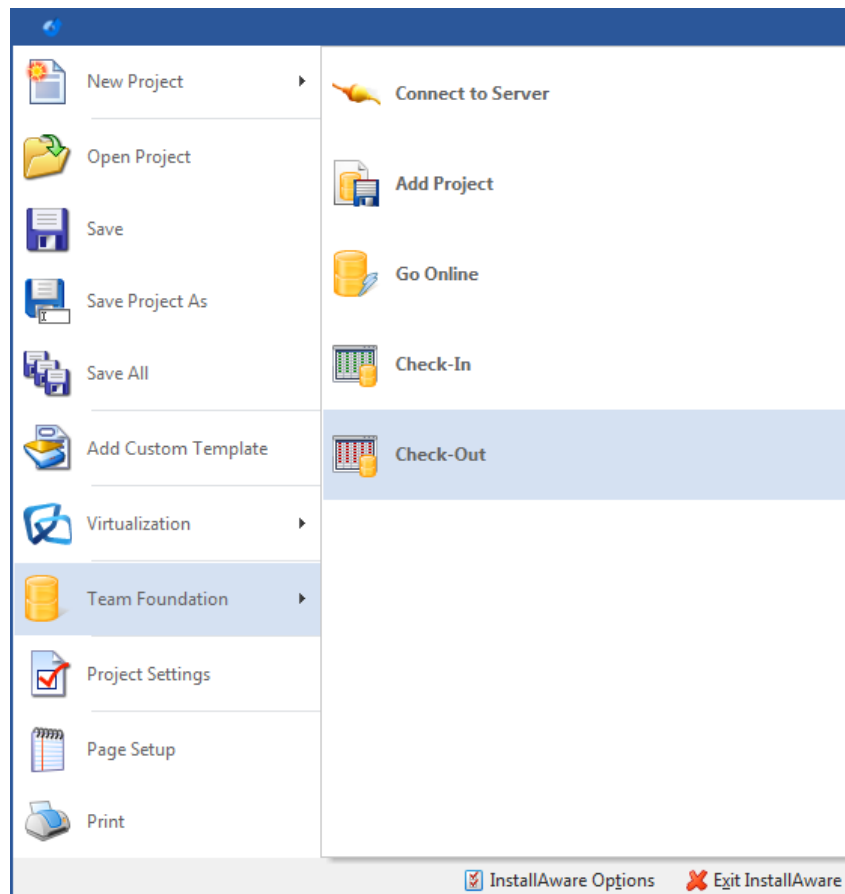
Manage your repository of VMware Workstation, VMware vSphere, and Microsoft Hyper-V virtual machines in the InstallAware IDE. Testing has never been so convenient before.



If you would like to monitor for your own custom installation targets, such as successful creation of particular services, files, registry keys, and any other measurable items; simply edit the default unit test script that ships with InstallAware. Use your custom unit test to objectively prove your installations on any chosen virtual machine snapshots.

- **Team Foundation Server Integration** – The InstallAware IDE is fully integrated with Team Foundation Server, versions 2010, 2012, 2013, and 2015.

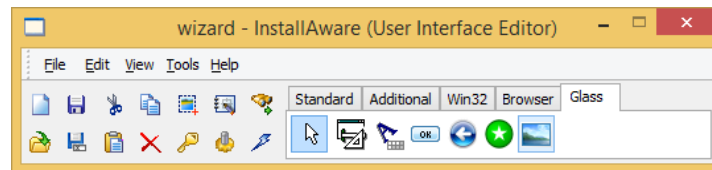
Setup solutions may be added to TFS, checked-in, checked-out, all with a single click – enabling collaboration with teams, local or global. If the TFS server associated with a setup solution cannot be reliably contacted, the InstallAware IDE will automatically take the setup solution offline temporarily, letting your work continue unimpeded. Any pending changes are automatically synchronized the next time a TFS connection is available.



- **Dialog Designer** – Just as nothing has been hard-coded in InstallAware, setup dialogs too are fully editable and customizable. While InstallAware ships with 17 pre-built themes and even more custom made dialogs in sample projects, nothing prevents you from creating highly customized, richly branded user interfaces that offer your customers a compelling installation experience.

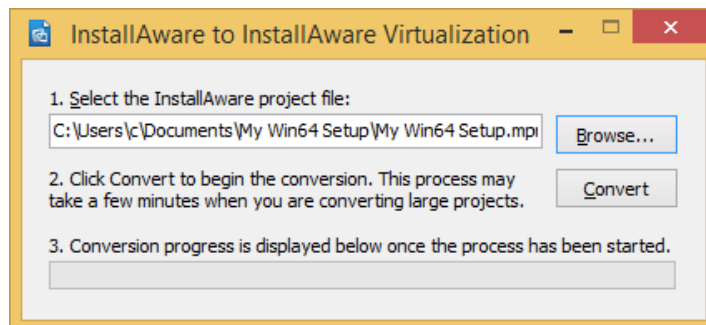
As illustrated in the *Impact* theme, you may even combine controls from multiple dialogs inside a single dialog to provide a streamlined workflow for your customers, just like Visual Studio's own setup routine! And remember, since InstallAware captures the native installation progress of setups you spawn from your master setup, the progress feedback of these third party installations will be displayed interactively, inside the setup dialogs that you have designed!

With InstallAware X4, you may also load dialog bitmaps programmatically at runtime to re-brand your installation on end-user systems without rebuilding anything! Custom dialogs are also a great place to collect and submit user data directly within your setup user interface, without ever launching external web browsers and risking the possibility of a click-away.

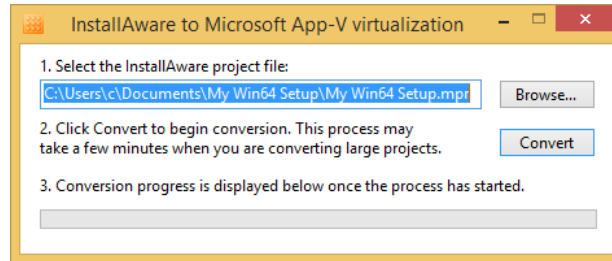


- **Export to InstallAware Virtualization** – It takes a single click in this tool to convert any existing InstallAware setup project to an InstallAware Virtualization project.

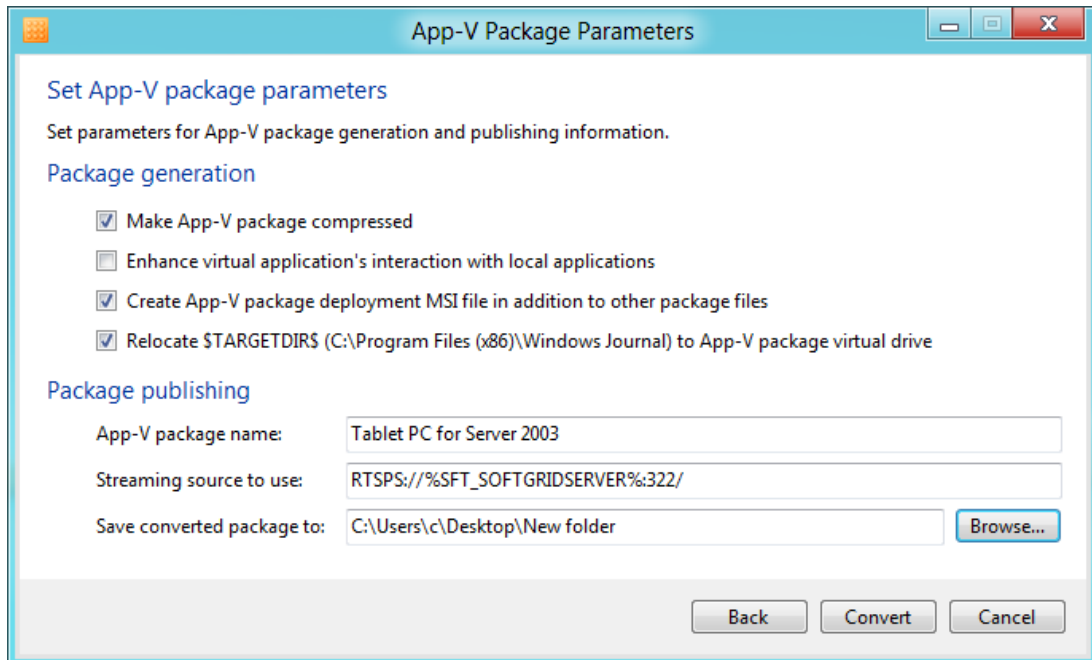
Explore how well your applications run virtualized – without being pre-installed or even extracted to a temporary folder – using this tool.



- **App-V Builder** – InstallAware’s App-V Builder produces an App-V Application Virtualization package out of any existing InstallAware setup project. There’s absolutely nothing new to learn, and no need for costly sequencing operations.



After selecting the InstallAware project to build as an App-V package, choose your entry point applications and other package creation options.

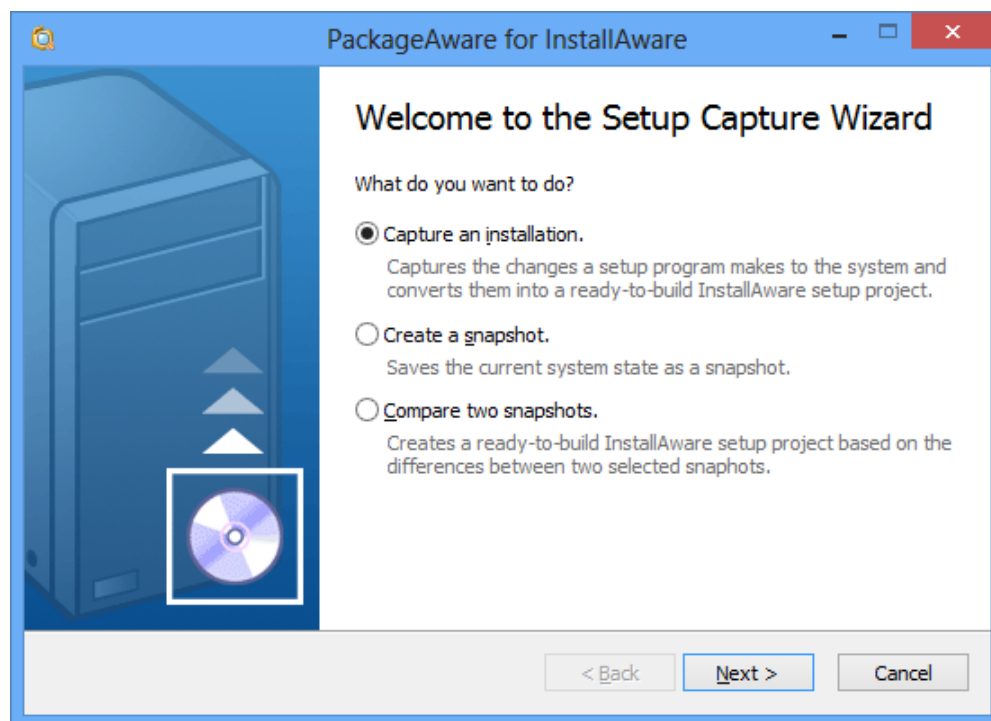


InstallAware’s unique Hybrid App-V Technology ensures that your packages may contain both 32 bit and 64 bit components, and run successfully on clients of both bitnesses.

You may also create an MSI file to push your App-V package using Active Directory/Group Policy, or other forms of unattended deployment.



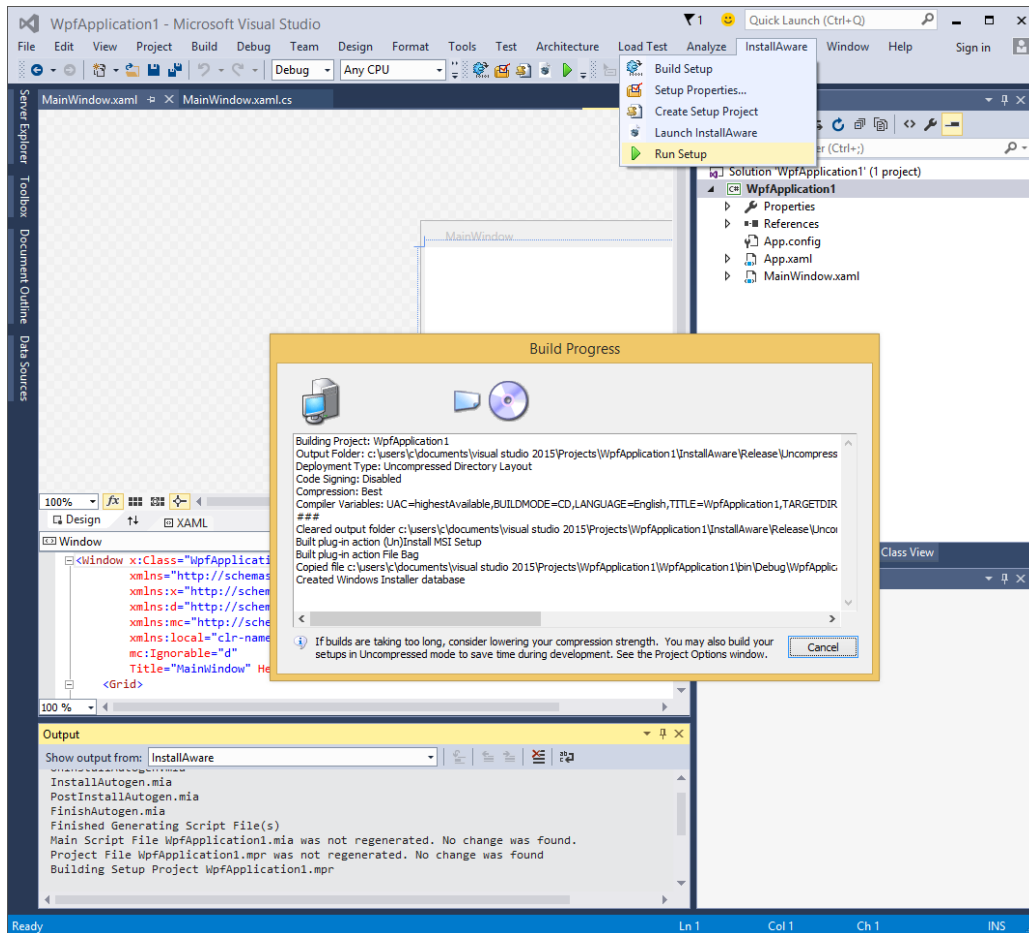
- **PackageAware** – Also included in InstallAware X4 is the industry’s fastest setup capture utility. Now optimized with proprietary, driver-less direct capture technologies, PackageAware performs both immediate captures, and snapshot based system scans. Save and compare any arbitrary two system snapshots to obtain the delta on any type of system change, in addition to software installations. Capture settings may also be saved and reused in frequently used profiles.



- **Visual Studio Integration** – InstallAware X4 integrates with Microsoft Visual Studio versions 2015, 2013, 2012, 2010, 2008, 2005, and 2003.

A single click on the InstallAware toolbar or menu within Visual Studio instantly builds your active solution as a ready-to-install setup, together with its host of dependencies, such as Microsoft .NET Framework 4.6. An InstallAware setup solution is also automatically created as part of this process, which you may further customize either inside InstallAware's Visual Studio Add-In, or using the full-fledged InstallAware IDE.

As your Visual Studio solution evolves, InstallAware's Visual Studio Add-In keeps your setup solution in-sync, while retaining any customizations you may have made to your setup solution. Virtualizing any Visual Studio solution is also just one-click away – thanks to InstallAware's App-V Builder which we already covered above.



Basic Introduction

Keep in mind that this guide barely scratches the surface of what is possible with InstallAware. Please refer to the following additional resources that help you get the most out of the product:

MSIcode Scripting:

http://www.installaware.com/msicode_scripting_technology.pdf

Partial Web Deployment (Web Media Blocks):

http://www.installaware.com/webaware_installation_technology.pdf

Building Custom Application Runtimes:

http://www.installaware.com/installaware_extending_application_runtimes_view.pdf

Patching:

http://www.installaware.com/installaware_patching.pdf

Web Updates:

http://www.installaware.com/installaware_web_updates.pdf

Frequently Asked Questions:

http://www.installaware.com/installaware_faq.ppt

InstallAware Edition Comparison Matrix:

<http://www.installaware.com/right-edition.htm>

Community Forums:

<http://www.installaware.com/forum/>

Procurement:

<http://www.installaware.com/buydirect.asp>

InstallAware Blog:

<http://www.installaware.com/blog/>

About InstallAware Software

InstallAware Software, founded in 2003, is the leading Cloud Infrastructure Company with its laser sharp focus on bullet-proof enterprise software deployment. InstallAware has been recognized by multiple awards coming from Microsoft, SDTimes "**Leader of the Software Development Industry**", Visual Studio Magazine **Reader's Choice**, ComponentSource, WindowsITPro, among other recognition. InstallAware X4 is available in a free edition for all Visual Studio users and paid editions with prices starting at \$329. For a fully functional 30 day trial and more information, visit www.installaware.com.

Copyright© 1996-2016 InstallAware Software. All rights reserved. All InstallAware brand and product names are trademarks or registered trademarks of InstallAware Software in the United States and other countries. Microsoft, Windows, and other Microsoft product names are trademarks or registered trademarks of Microsoft Corporation in the U.S. and other countries. All other marks are the property of their respective owners.

www.installaware.com · sales@installaware.com