

## JMR ProBracket Family

The latest Apple Mac Pro® and its revolutionary design have taken the market by storm, but is leaving many users and IT pros scratching their heads. How can multiple users share the power of the Mac Pro? How can I get it off my desk or the floor?

The JMR ProBracket is the easiest mounting solution for securing your Mac Pro. The innovative racking system enables users to easily mount and protect their Mac Pro investment under a desk, aside a desk pedestal, to a wall, or into a rack cabinet.



### MPRO-SNGL-RM

The MPRO-SNGL-RM is used to rack mount a Mac Pro in a secure manner to withstand vibration caused by transportable rack systems, DIT carts, or seismic shock.

Using a removable, sliding “cradle” for the Mac Pro, in conjunction with a strongly affixed docking bracket that installs into the rack cabinet using both front and rear cabinet rail supports (adjustable in depth from 18” to 32”), the MPRO-SNGL-RM is the ideal solution for those needing a rugged rack mounting system for the Mac Pro.

The sliding “cradle” is removable and may be used in alternate locations having other MPRO docking brackets installed. It protects the computer’s finish with rubber coated contact surfaces while locking the computer into place with two precision fitted, powder coated galvanized steel straps. Complete with all required hardware and installation instructions.



### MPRO-DESK

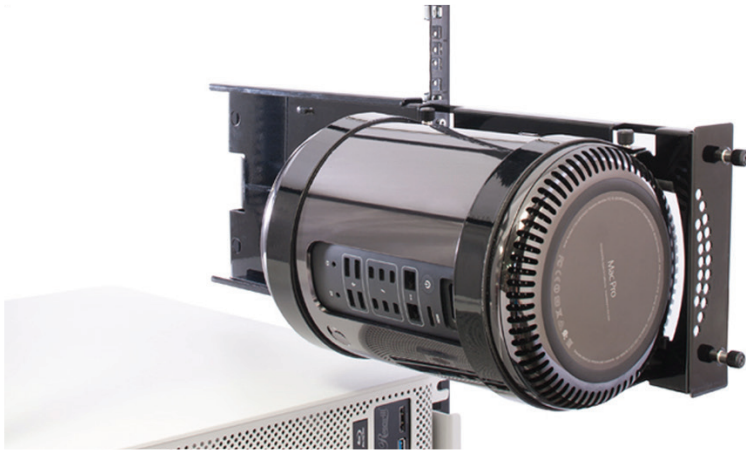
The MPRO-DESK mounts a single Mac Pro computer under a desk, aside a desk pedestal, to a wall, or into a rack cabinet - at any angle. With I-O ports readily available or hidden, the ProBracket includes cable management and secure, integrated straps that hold the Mac Pro in place, along with rubber gasketed “cradles” that protect it from vibration and scratches. Each ProBracket is finished in high-gloss black baked-on powder coating over 18-gauge galvanized steel for long life and ruggedness.

### MPRO-DUAL-RM

The MPRO-DUAL-RM is a rugged and secure method of installing two Mac Pro computers into any standard rack equipment cabinet. The dual rackmount bracket is strong enough to survive transportable racks and seismic shock, and occupies 4U of cabinet space. The MPRO-DUAL-RM may also be used with a single Mac Pro, and the remainder of the bracket used as a shelf for supporting other items.

Mounting each computer on a sliding “cradle” using strong powder coated, galvanized steel straps with rubber contact areas to protect the Mac, the Mac Pros then slide in and out of the rack cabinet with ease, using a docking bracket that is affixed into the rack cabinet using both left and right vertical rails.

The sliding “cradle” bracket is interchangeable with all other sliding ProBracket products, so the computers may be moved from place to place and re-installed into a different docking unit. All ProBrackets are made with heavy 18-gauge gloss black powder coated galvanized steel, and in all cases the computer is protected by rubber coated contact areas.



## MPRO-HORZ

The MPRO-HORZ is a sliding rack to mount a single Mac Pro into a cabinet or against a wall/pedestal.

The MPRO-HORZ, 7"H (4U) x 16"D, will install in all standard rack cabinets and most mobile rack carts.

With I-O ports readily available or hidden, the ProBracket includes cable management and secure, integrated straps that hold the Mac Pro in place, along with rubber gasketed "cradles" that protect it from vibration and scratches. Each ProBracket is finished in high-gloss black baked-on powder coating over 18-gauge galvanized steel for long life and ruggedness.



## MPRO-BRKT-RM

The MPRO-BRKT-RM is the same rack mounting bracket as the MPRO-SNGL-RM but does not include the Mac Pro "sled", which mounts the computer itself. Included in this accessory are the adjustable-depth receiving bracket and mounting hardware for installation.



## MPRO-COOL

The new MPRO-COOL is an accessory for the MPRO-SNGL-RM rack mount ProBracket and provides boost cooling for an installed Mac Pro in those situations where the computer runs too warm due to surrounding equipment or air flow restrictions.

The kit has a preinstalled finger guard and a six foot 120V power cord, and can be added to a new MPRO-SNGL-RM in just a minute. The MPRO-COOL fan, spinning at 52 CFM, is a whisper-quiet 30db(A) and when used with the Mac Pro, cannot be heard. Complete with screws for installation and instructions.

Image shows the MPRO-COOL installed on the MPRO-SNGL-RM bracket (sold separately).



## MPRO-COOL-EU

The MPRO-COOL-EU is an accessory for the MPRO-SNGL-RM rackmount ProBracket and provides boost cooling for an installed Mac Pro in those situations where the computer runs too warm due to surrounding equipment or air flow restrictions. This product, with the same features as the MPRO-COOL, uses a 220 VAC fan for use in Europe and other countries providing 200-240 VAC mains power. It comes complete with five (5) "World Traveler" AC plug adapters for use in almost any country using 220 VAC mains power.

Image shows the MPRO-COOL-EU with its "World Traveler" adapter kit, which is standard with this product. The ProBracket is sold separately.