



# HARVESTER SERVER



Defensible Automated E-Discovery  
Collection

**Harvester 4.0  
has Arrived!!**

## SEARCH AND COLLECT DISCOVERABLE DOCUMENTS AND EMAIL

Incomplete and undocumented electronic discovery collections occur every day. The result of mishandling these files can be costly to both the client and their legal counsel. Unlike other offerings, Pinpoint Labs doesn't require you to purchase additional products or services in order to facilitate a collection. Data collected with Harvester can be accessed with other popular E-Discovery tools. A simple flat rate pricing structure allows you to use the tools as often as you need without worrying about hidden fees.

## HARVESTER FEATURES

- ▶ Early Data Assessment (EDA) Reports
- ▶ Identifies non-searchable/encrypted files
- ▶ DeNIST and Dedupe
- ▶ Multi-threaded
- ▶ Create new PSTs or 8 different email formats from filtered messages
- ▶ Harvester ESI "easy" Vault (Custodial Drag and Drop window)
- ▶ Keyword filter MS Outlook PST's, attachments, loose files and archives

**Harvester 4.0 Server offers a completely redesigned and upgraded user interface, providing an even easier workflow when creating collection job profiles.**

### COMMON HARVESTER SERVER USES:

- ▶ Remotely collect E-Discovery data from custodian computers across the network
- ▶ Monitor job progress and generate reports from a central location
- ▶ Run customized job profiles that keyword search, deduplicate, deNIST, and perform many other targeted collection options

**Harvester Server** allows users to filter and defensibly collect E-Discovery files from a laptop, desktop or network locations. Harvester Server can be used to monitor jobs from a central location and launch pre-configured collection job profiles on remote computers. In addition to collecting data, Harvester Server is also a very powerful culling tool that many use post collection to filter Microsoft Outlook PST's, and loose files by keyword, date range, and other criteria. Being able to get real-time feedback as collection jobs start and monitor overall progress is very useful. Progress results can be emailed directly from Harvester Server as a Microsoft Excel spreadsheet, PDF, RTF, and many other formats.

**Remote Collection:** Harvester Server administrators can pre-configure collection job profiles which can be ran in "stealth" mode on remote computers. Harvester collection job profiles can also be launched by a link in an email or legal hold notice sent to each custodian. The scripted jobs can identify files and emails by keyword, date range, and also perform deduplication and deNISTing. Matching items will automatically be copied to the specified network target location. Data collected with Harvester Server can be processed with all popular E-Discovery tools or shipped to the vendor of your choice.

## THE HARVESTER 4.0 PORTABLE UPGRADE PROVIDES:

The ease to centrally manage and monitor Enterprise level collection or culling jobs – whether they are running directly from local production computers or remote systems

- ▶ Ability to run a job from any shared network location
- ▶ Option to create keyword indexes and export the results – allowing users to quickly preview their hits real-time across a large number of client systems
- ▶ Review detailed information for file types, keyword hits, and other criteria choosing which items to collect
- ▶ Customize colors for running jobs and use advanced filtering options.

# PINPOINT LABS

PRESERVE · COLLECT · DISCOVER

▶ [WWW.PINPOINTLABS.COM](http://WWW.PINPOINTLABS.COM)

## POWERFUL E-DISCOVERY COLLECTION SOFTWARE

▶ 8246 Oddo Circle ▶ Murray, NE 68409 ▶ 402.235.2381 ▶ 888.304.1096



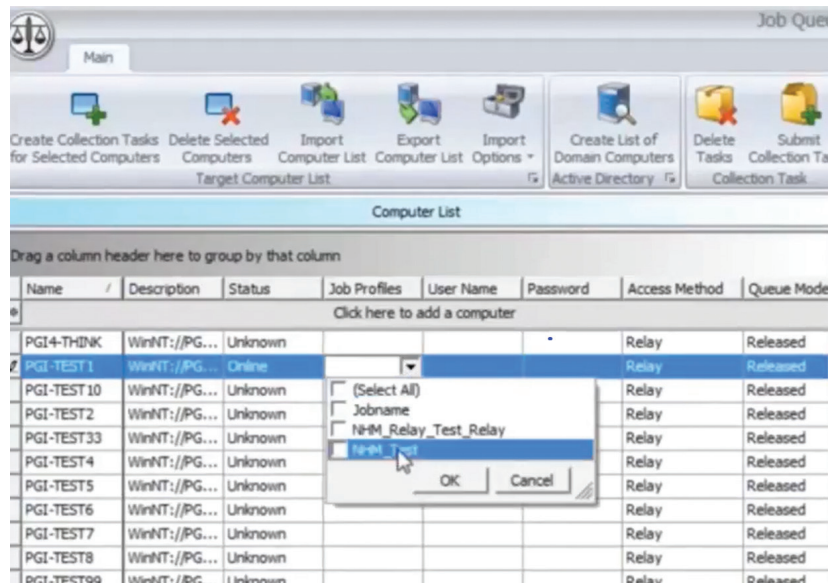
# HARVESTER SERVER



Defensible E-Discovery  
Collection Software

**Check out the  
New Features!**

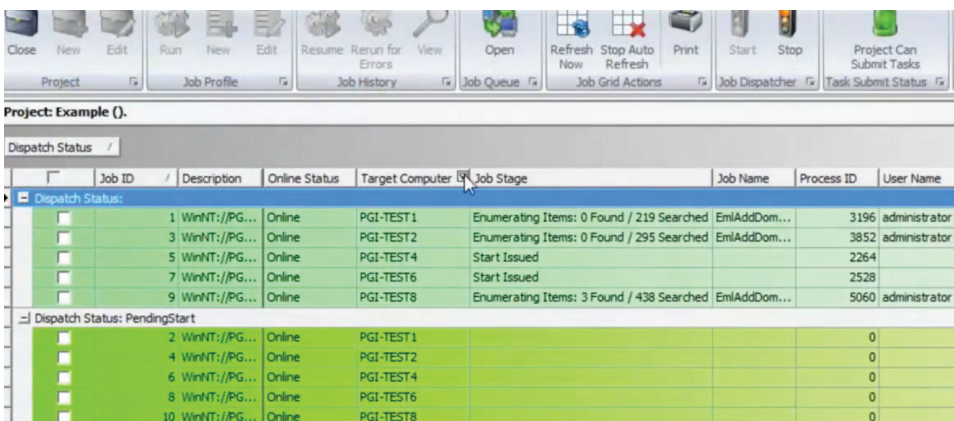
Import a custom computer list or have Harvester take a quick inventory of all the computers on the domain Directory Search by using **Active Directory Search**. Then you can quickly ping the computers to make sure the computer is online, assign the job to a specific job profile (great for legal holds), and apply a specific job ticket to be remotely launched on that custodians computer.



## ADDITIONAL HARVESTER 4.0 SERVER FEATURES:

- ▶ Upgraded user interface provides administrator easy access to profiles, job monitor, and scheduling
- ▶ Automated job resume for remote client systems
- ▶ Job dispatcher manages collections across multiple projects
- ▶ Easily open, run or edit job profiles

Efficiently organize and monitor all of your projects and jobs that are being processed across the network.



# PINPOINT LABS

PRESERVE · COLLECT · DISCOVER

▶ [WWW.PINPOINTLABS.COM](http://WWW.PINPOINTLABS.COM)

## POWERFUL E-DISCOVERY COLLECTION SOFTWARE

▶ 8246 Oddo Circle ▶ Murray, NE 68409 ▶ 402.235.2381 ▶ 888.304.1096

## Evidox Provides Comprehensive E-Discovery Collections Using Harvester Server Software

*"We go through an extensive vetting process with any software tool we use on our clients' data. Pinpoint Labs Harvester not only passed our internal tests with flying colors, our technicians have come to rely on it heavily in the field. The Pinpoint Labs team has always been there to help when needed. I can't say enough about the quality of the products and people over at Pinpoint Labs."* — **Lynn Turgeon, COO**

*"We love the fact that Harvester can be placed on any portable drive or executed from a shared network location. This allows us to complete onsite collections with minimal setup on our client's computers. Running remote jobs without the custodian's knowledge is also critical to our clients and the collection process which Harvester performs exceptionally well."* — **Sam Bastawros, Senior Project Manager**

### ABOUT EVIDOX

Evidox is a leading provider of e-discovery services including collection, preservation, processing, hosting and production. Evidox differs from other vendors in its legal-centric approach. Its founders have AmLaw 100 backgrounds and previously ran the largest in-house e-discovery facility in New England.



The guiding philosophy of Evidox is that e-discovery is not a technical issue; it is a legal issue with a technical solution. As such, the questions of scope and cost remain in the hands of the supervising attorneys, not the technicians. The technology serves the legal process rather than driving it.

Evidox and its principals have conducted thousands of e-discovery projects in hundreds of cases involving many terabytes of data and millions of documents. In every case, however, the primary objective has been to make the project as compact, efficient and inexpensive as possible, consistent with the requirements of the discovery process.

### BUSINESS CASE EXAMPLE

Evidox was contacted by a client that needed electronic data collected from all employees in the company. The collection needed to take place without the custodian's knowledge. The sources included but were not limited to:

- ▶ Microsoft Exchange Email servers
- ▶ Employee file shares on the company network
- ▶ Employee file shares on cloud servers
- ▶ Employee local loose files and Outlook PST archives

The client provided 64 search phrases that included Boolean, proximity and wild cards. The source information also needed to be de-duped and de-NISTed at the point of collection. More than 6 terabytes of data were located in the sources identified.

To reduce the project cost, Evidox technicians offered to setup and manage the collection remotely through VPN access on their client's systems. The staff at Evidox found the perfect software tool they needed to complete the project from Pinpoint Labs.

**Harvester Server** from Pinpoint Labs is a scalable and robust tool specifically designed to perform targeted defensible e-discovery collections across a network or from portable devices. After reviewing several competing tools, Evidox chose *Harvester Server* because it provided ease of installation and the required searching and secure collection capabilities without being cost prohibitive. Evidox remotely installed and configured *Harvester Server* on a virtual server created at the client location for the collection project.

Using the *Harvester Server* remote job scheduler, Evidox technicians were able to launch the collection jobs without the custodian's knowledge and track the real-time progress from a central management console. File server collections were queued on the administrative systems provided and monitored remotely. At the end of each day, Evidox could report updates created by *Harvester Server* to the legal teams.

A total of 95 gigabytes of target data were identified and collected from more than 6 terabytes of storage searched. *Harvester Server's* ability to quickly search loose files, archives, email stores (Microsoft Outlook PST's, Lotus Notes NSF's), attachments and other sources enabled Evidox to provide a precisely targeted collection. The significant target data reduction (only .016%) resulted in a considerable savings in the client's production and hosting costs.

### TESTIMONIALS

*"We go through an extensive vetting process with any software tool we use on our clients' data. Pinpoint Labs Harvester not only passed our internal tests with flying colors, our technicians have come to rely on it heavily in the field. The Pinpoint Labs team has always been there to help when needed. I can't say enough about the quality of the products and people over at Pinpoint Labs."*  
— **Lynn Turgeon, COO**

*"We love the fact that Harvester can be placed on any portable drive or executed from a shared network location. This allows us to complete onsite collections with minimal setup on our client's computers. Running remote jobs without the custodian's knowledge is also critical to our clients and the collection process which Harvester performs exceptionally well."*  
— **Sam Bastawros, Senior Project Manager**

To learn more about Evidox, please visit their website at [www.evidox.com](http://www.evidox.com). More information on *Harvester Server* software from Pinpoint Labs is available at [www.pinpointlabs.com](http://www.pinpointlabs.com).



### HARVESTER FEATURES

- ▶ Early Data Assessment (EDA) Reports
- ▶ Keyword filter Active MS Outlook Accounts (Exchange, Yahoo, etc.)
- ▶ Identifies non-searchable/encrypted files
- ▶ Harvester ESI "easy" Vault (Custodial Drag and Drop window)
- ▶ Write files to TrueCrypt volume for security
- ▶ DeNIST and Dedupe
- ▶ Use with Portable ESI Self Collection Drives/Kits
- ▶ Keyword filter MS Outlook PST's, attachments, loose files and archives
- ▶ Dedupe across multiple MS Outlook PSTs
- ▶ Create new PSTs or 8 different email formats from filtered messages
- ▶ Search multiple timestamps
- ▶ Create file summary and file lists from filtered file and messages
- ▶ Multi-threaded
- ▶ Set expired licenses for Harvester Portable using Portable License Manager (PLM)
- ▶ No per gig fees and No per Custodian fees

### POWERFUL ESI COLLECTION SOFTWARE