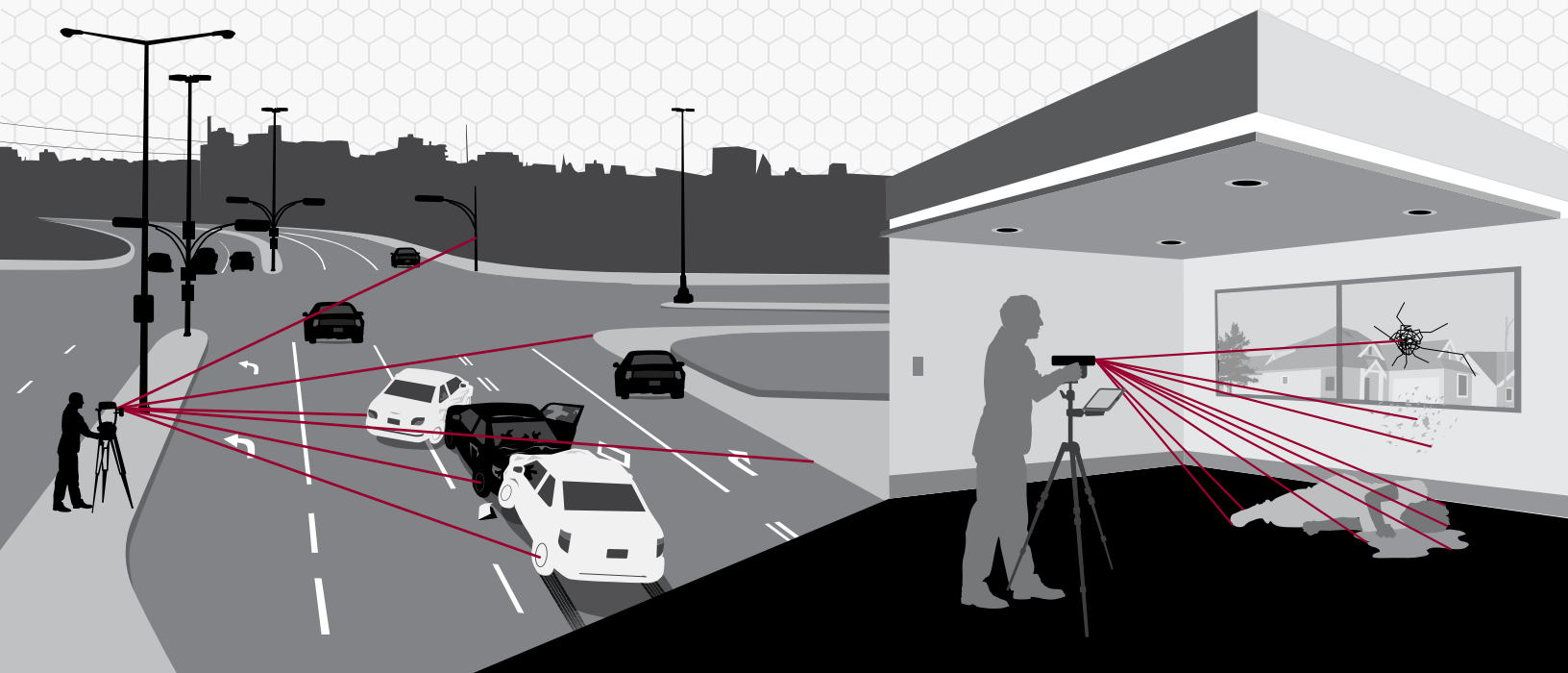


CRASH AND CRIME SCENE MAPPING

- + Meet Indoor and Outdoor Mapping Challenges
- + Complete Hardware/Software Packages
- + Field Data to Courtroom Diagrams



www.lasertech.com

 **LASER[™]
TECHNOLOGY**
Measurably Superior[®]

Crash Scene Mapping

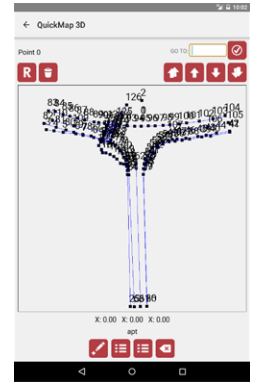
Typical surveying equipment is pricey and known to be difficult to use and set up. With the high cost of shutting down roadways and the dangerous risk of secondary accidents, time is always of the essence.

- Set up in seconds and map the scene quicker to maximize everyone's safety
- Map in any surrounding landmark without a prism with reflectorless technology
- Save thousands on equipment and avoid the need for extensive training



Field Data Collection with QuickMap 3D®

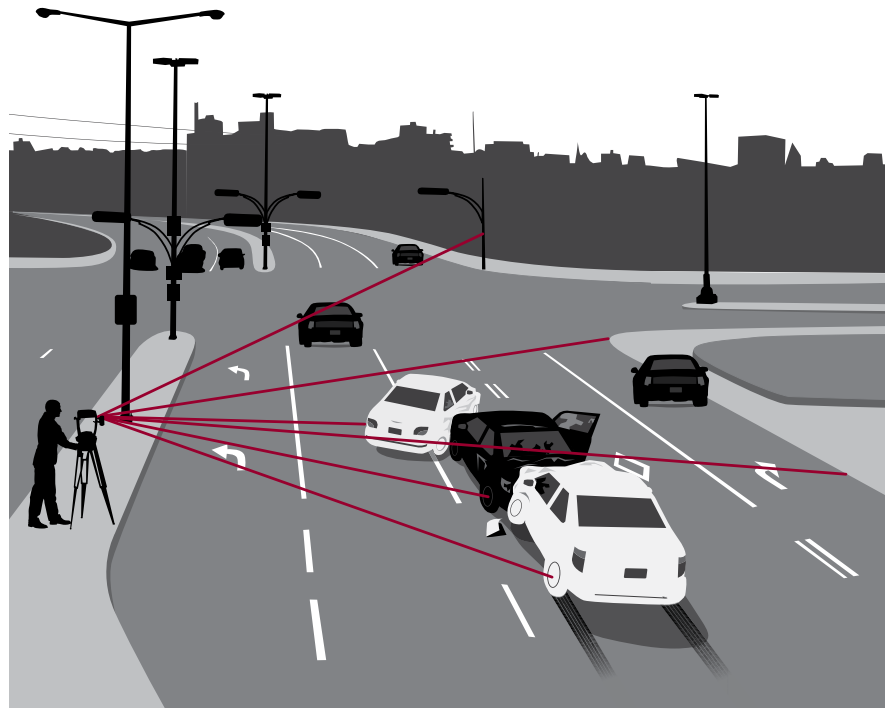
In the 1990's, LTI released the very first crash mapping software designed for the non-surveyor. It's known for being very intuitive, making it easy to collect, store and identify critical evidence as fast as you can point and shoot a laser.



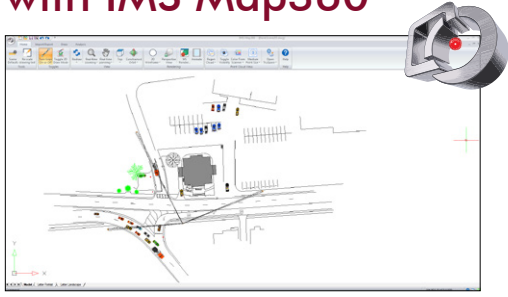
- Adapt to any scene terrain challenge by choosing from three mapping techniques
- Quickly identify points with a custom-built pick list of commonly mapped features
- Use the CAD program of your choice and save all your collected data in .txt, .csv, .dxf, .raw, and .bmp formats

TruPulse® 200X + MapStar® TruAngle® for Outdoor Use

- Achieve a wide vantage point and minimize traversing with the laser's powerful 7x magnification
- Set up and measure in less time with lightweight, easy-to-operate equipment
- Measure only the points you need and transfer them into CAD on the computer you already have



Desktop Diagramming with IMS Map360



- Automatically join your line work from QuickMap 3D points with Scene-to-Map functionality
- Access commonly used incident reconstruction formulas via the scene analysis tool
- Benefit from using the trajectory insertion feature to make a stronger case

Crime Scene Mapping

Surveying a crime scene is a tedious task that needs to be documented quickly, yet with a high level of accuracy. The evidence cannot be disturbed, and the documentation needs to be carefully preserved.

- Have confidence that valuable points are accurately collected
- Use advanced technology that is affordable for any department
- Set up and measure your first point within seconds
- Preserve the scene by plotting points from a preferred distance

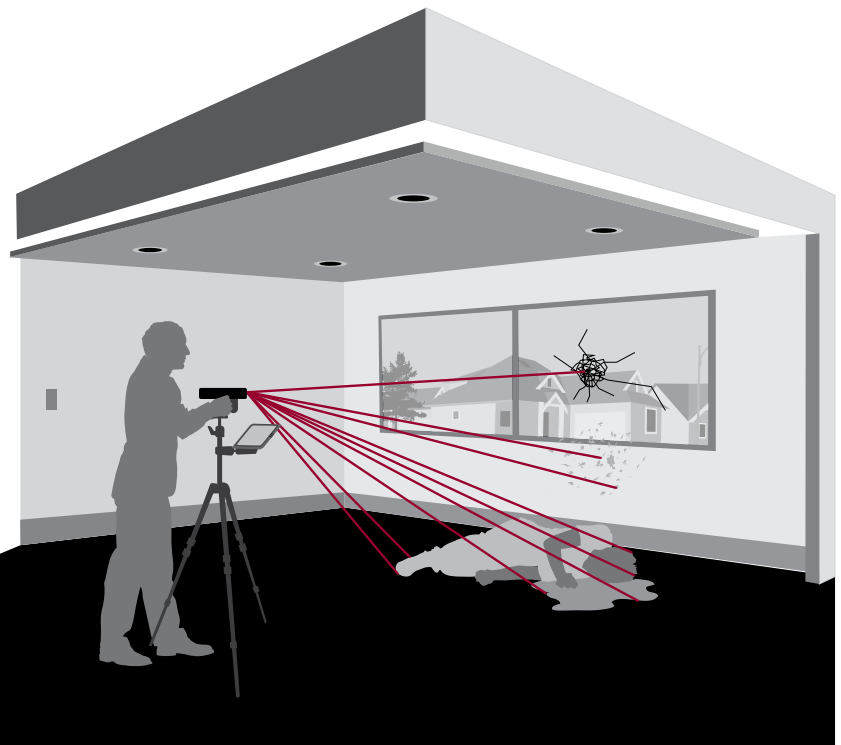


TruPoint™ 300 for Indoor Use

- Obtain millimeter accuracy with precision of red-dot targeting and camera aiming
- Only get the points you need and work with reasonably sized files on the computer you already have
- Fit into any room and measure evidence within tight spaces

Reasons Why to Buy LTI

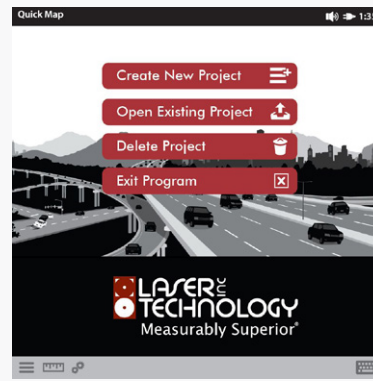
- Has served law enforcement agencies for over 25 years
- Specializes in laser-based technology and is a holder of over 66 patents
- Manufactures high-quality, cost-effective instruments



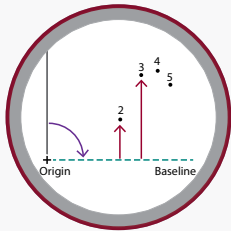
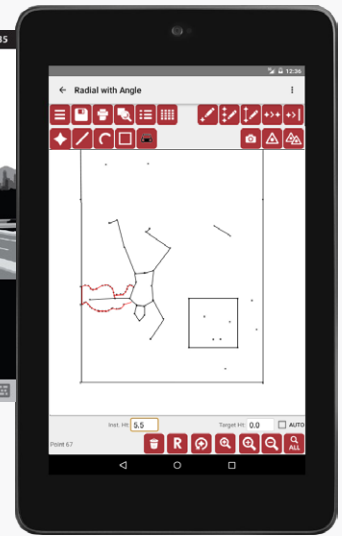
LTI's LaserSoft® QuickMap 3D® Now on Android Platform

LTI has once again proven to be on the cutting edge of technology by releasing the very first incident mapping software on an Android platform. Now crime and crash scene investigators can utilize all the benefits of QuickMap 3D with new functionality that makes the mapping experience even faster and easier.

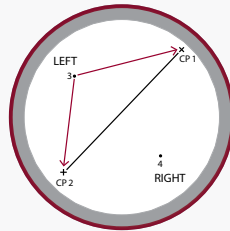
- Cable-free data transfer
- Automatic laser connection when mapping
- Better map visibility with larger display and icons
- Built-in help including step-by-step procedures to correct common mistakes



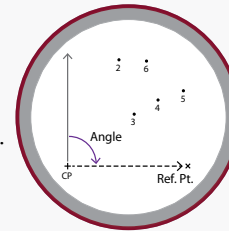
First-of-its-kind mapping software on Android with iOS coming soon!



BASELINE
Occupy the roadside and measure features at a 90-degree angle.



RANGE/RANGE
Occupy the point of interest and measure the same two remote targets.



RADIAL WITH ANGLE
Occupy any safe location and measure features at any angle.

Laser Specifications



TruPulse® 200X



TruSpeed® Sxb



TruPoint™ 300

Range	Reflective 8,200 ft (2500 m) Nonreflective 6,233 ft (1900 m)	2,000 ft (609 m)	1,000 ft (300 m)
Speed	N/A	0 to 200 mph, ±1 mph accuracy	N/A
Range Accuracy	±1.6 in (4 cm) Typical		±0.04 in (1 mm) Typical
Inclination Accuracy	± 0.1° Typical		± 0.1° Typical
Power	(1) CR123A Battery		Li-ion rechargeable

Angle Encoder Specifications



MapStar® TruAngle®



TruPoint™ 300

Angle Range	0 to 359.99°	
Angle Accuracy (Mounted)	±0.05°	±0.1°
Power	(2) AA Batteries, up to 8 hours use	Li-ion rechargeable
Communication	RS 232, NMEA	Bluetooth® SMART and WiFi