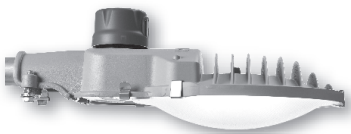


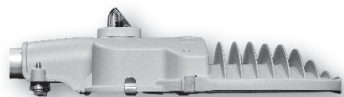
EVLUMA AREAMAX™

40W & 70W TYPE V 3000K LED STREET, AREA AND SECURITY LIGHTING
REPLACES HID DUSK-TO-DAWN LUMINAIRES 100-200W

AMAX 40 AMAX 70 3000K CCT



reuse existing photocontrol
with S3 option (dome lens shown)



evluma integrated photocontrol
with P option (cutoff lens shown)



CERTIFICATION DATA
UL 1598. MET Labs
IP66. UL 60529
ASTM D2247-68
FM 4473
ANSI C136.31-2010
EPA under 0.5 sq ft

ENERGY DATA
Power Factor >99%
THD <10% at 120 VAC
THD <20% at 277 VAC
<1/2W off-state power
Driver Lifetime >100,000 hrs
-40°C Min / 50°C Max AM Temp

SHIPPING DATA
Pallet Qty:
56 units, 580 lbs

DESCRIPTION

The AreaMax LED luminaire for street and area lighting is a robust, utility-grade luminaire designed to last for years. Easy to install, the AreaMax saves energy and maintenance time. Perfect for residential or rural applications where a warmer color temperature luminaire is preferred. Each unit ships with Photocontrol Failsafe™ built-in and the option to activate ConnectLED™ features with the purchase of the Evluma custom Bluetooth application.

Construction & Finish

Cast aluminum housing with gray powder coat. Hinged access panel is galvanized steel with spring clips to allow for easy open and close. *Bronze color option available. Please inquire.

Optical (lens)

Textured glass and a white, optical-grade reflective film liner combine to create a bright, diffuse light.

Electrical

Evluma proprietary Class II driver. Patented. 90-277 VAC 50/60 Hz (AMAX 40: .32 Amps at 120VAC / AMAX 70: .60 Amps at 120VAC). High capability surge protection for 20kV/10kA per IEEE/ANSI C62.42.2 - 2002. Location Category C-High. Replaceable surge board.

Thermal Management

LED life is ensured by thermal management protection circuitry that controls current levels to the LEDs based on temperature. Critical components were selected for their minimal thermal resistance then paired with a custom light engine and casting design to maximize cooling.

Mounting

Zinc plated steel tenon clamp and tri-lobe screws accept 2", or 1 1/4" arm.

Coastal Package Option

Corrosive coastal environments have unique requirements. A housing made from cast aluminum alloy with an anti-corrosion chromate coating plus an aluminum access panel, a stainless steel tenon clamp and all stainless steel fasteners guarantee longevity in harsh, wet environments. Required for applications 2000 ft from a salt water body.



Dark Sky Compliant Models

The International Dark Sky Association (IDA) requires luminaires to be fully shielded, emitting no light above 90 degrees and have a listed correlated color temperature (CCT) configuration of 3000K or below. Two models of the AreaMax bear the IDA Fixtures Seal of Approval: 40W 3K V-C & 70W 3K V-C.

Warranty

Ten-year warranty.

Visit www.evluma.com/products/warranty/

EVLUMA AREAMAX™

40W & 70W TYPE V 3000K LED STREET, AREA AND SECURITY LIGHTING
REPLACES HID DUSK-TO-DAWN LUMINAIRES 100-200W

ORDERING INFORMATION

SAMPLE NUMBER: AM-40-3K-V-C-P-CST-6

PRODUCT FAMILY	WATTS	CCT	DISTRIBUTION TYPE	LENS (options)	PHOTOCONTROL SOCKET (options)	ENVIRONMENTAL PACKAGE (options)	LEADS (options)
AM = AreaMax	40 = 40 watts	3K = 3000K	V = type V	D = dome C = full cutoff	P = integrated S3 = 3 pin socket	0 = std outdoor CST = coastal	6 = 66" 10 = 10' 20 = 20' N = none
	70 = 70 watts	3K = 3000K	V = type V	D = dome C = full cutoff	P = integrated S3 = 3 pin socket	0 = std outdoor CST = coastal	

PERFORMANCE 40W (recommended to replace 100-175W HID)

Code	CCT	CRI	Lumens	LED mA	BUG	IES File Numbers
3K (D)	3000K	>70	>4000	700mA	B2-U2-G1	ITL87306
3K (C)	3000K	>70	>3900	700mA	B2-U0-G1	ITL87422

LUMEN MAINTENANCE

L70 (10,000) >60,000 hrs
LM at 10,000 hours = 95.9%
LM at 100,000 hours = 93.95%

PERFORMANCE 70W (recommended to replace 150-200W HID)

Code	CCT	CRI	Lumens	LED mA	BUG	IES File Numbers
3K (D)	3000K	>70	>7000	700mA	B3-U2-G2	ITL87307
3K (C)	3000K	>70	>6800	700mA	B2-U0-G1	ITL87423

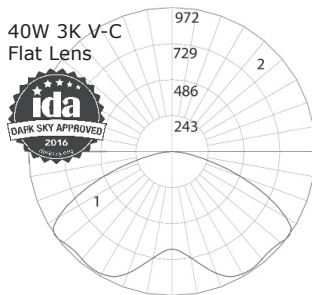
ACCESSORIES

AMAX-LTS stainless steel light trespass shield (order separately)

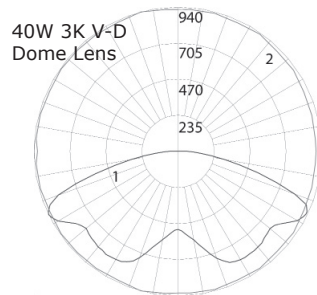
DISTRIBUTION OF LUMINOUS INTENSITY

View complete IES files at <http://evluma.com/products/areamax>

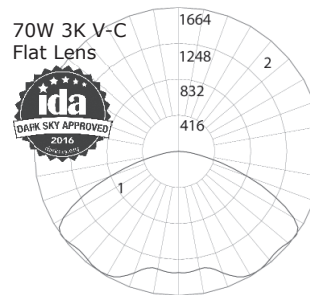
Polar Candela Distributions: Vertical Plane (1) and Horizontal Cone (2) through maximum candela



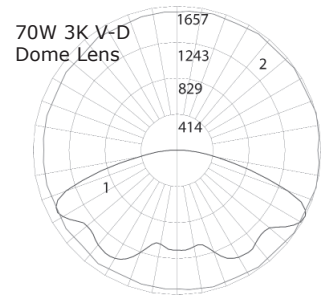
Max Candela: 972 at 54°



Max Candela: 940 at 64°

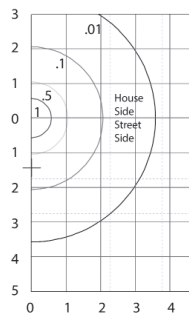


Max Candela: 1664 at 54°

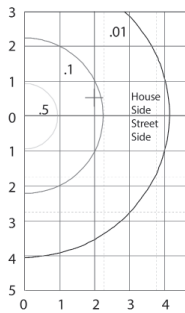


Max Candela: 1657 at 63°

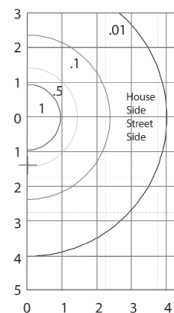
Isofootcandle Lines of Horizontal Illuminance: grid distance 2x 25 ft (7.62 m) mounting height



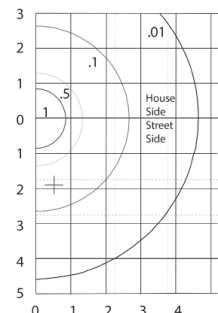
.01 fc at over 3.25' mtg htgs



.01 fc at over 4.25' mtg htgs



.01 fc at over 4.25' mtg htgs



.01 fc at 4.5' mtg htgs