

MAPSMART[®] FOR ANDROID FIELD DATA COLLECTION

- + Improved Workflow
- + Collect Data Your Way
- + Capture Photos
- + Integrate Location Data
- + Stockpile Volumes and Tonnage Data

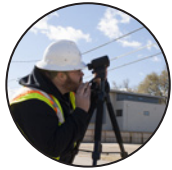


www.lasertech.com

 **LASER[™]
TECHNOLOGY**
Measurably Superior[®]

MapSmart: Your Points Positioned

The next generation of mapping is here. MapSmart on Android takes all of the sophisticated mathematics and technology required to collect reliable field data or calculate stockpile volumes and makes it as easy as using a smartphone app.



Simplified Mapping

Quickly set up your file and begin mapping like a pro without the need for surveying degrees, certifications, or extensive training.



Capture Photos

Take a photo whenever you want and MapSmart will automatically associate that image with your data point.



Map Your Way

Adapt to any type of work environment and choose one of four different mapping routines to keep you safe and productive.



Integrate Location Data

Use the GPS from your smart device and increase your position accuracy with an external receiver.

Improved Workflow Thanks to Android

Take advantage of all the benefits from smart device technology and embrace an easier way to map.

- Transfer your field data wirelessly and say goodbye to cables
- Automatically receive feature updates through Google Play
- Solve problems right in the field with built-in help and support

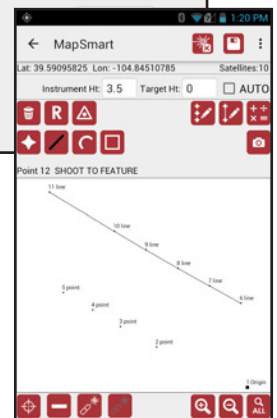
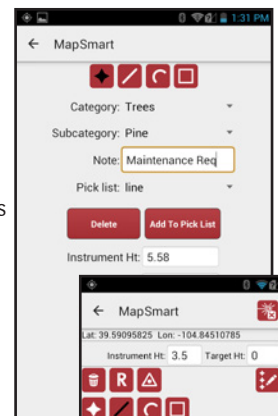
Pt#	X	Y	Z	Note
1	0.00	0.00	0.00	CP1
2	-33.74	-9.43	-1.56	TOE
3	-31.03	-4.13	-1.35	TOE
4	-29.70	-0.86	-1.31	TOE
5	-31.71	2.56	-1.53	TOE
6	-32.37	5.19	-1.44	TOE
7	-33.35	6.91	-1.40	TOE
8	-34.82	8.70	-1.33	TOE
9	-36.13	11.38	-1.45	TOE
10	-35.14	12.75	-1.23	TOE
11	-33.42	16.45	-1.09	TOE
12	-30.83	18.13	-1.02	TOE
13	-28.82	18.47	-1.02	TOE
14	-26.59	21.15	-0.92	TOE
15	-24.86	23.57	-0.82	TOE
16	-23.69	25.61	-0.67	TOE
17	-25.78	28.46	-0.50	TOE
18	-22.32	27.20	-0.49	TOE
19				
20				
21				
22				
23				
24				
25				
26				
27				
28				
29				
30				
31				
32				



Map Point, Line and Area Features

Shorten your desktop diagramming time by establishing feature types and specific notations right in the field.

- Map and notate any individual point or group of points
- Transform a mapped feature type to any other feature type in two steps
- Draw an outline around irregular shapes using the area feature



REMOTE FIRE
Improve stability and targeting by using the laser's remote fire capability from your tablet.



FIELD CALCULATIONS
Get measurement values between any point and any other point or line segment at any time.

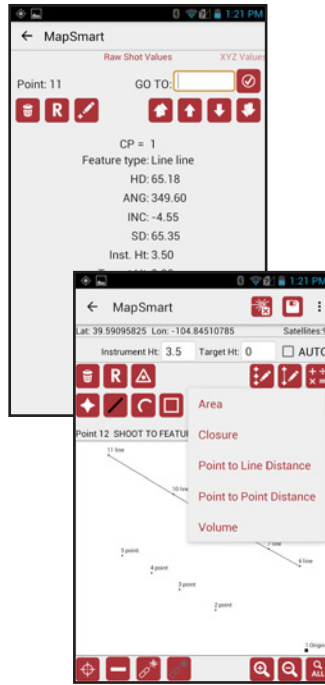


SPLINE CURVE
Enjoy smooth transitions from straight lines to curves and back.

Real-Time Calculations

When time is money, you can't beat real-time data.

- Displays the measurement values between any two points or from a point to any line
- Calculates the perimeter and area of any boundary
- Generates a closure ratio to verify the accuracy of your traverse

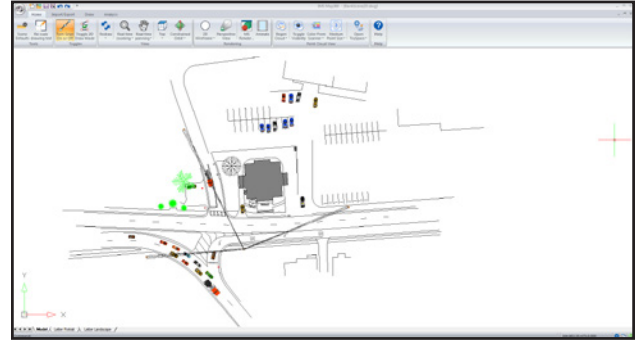


Report Formats

- GPS Exchange (*.gpx)
- Portable Document Format (*.pdf)
- Keyhole Markup Language (*.kml)
- CAD File (*.dxf)
- ASCII Plain Text (*.asc)
- Text Report (*.txt)
- Spreadsheet Report (*.csv)
- Raw Data (*.raw)
- Graphic Small (*.png)
- Graphic Large (*.png)

Field to Office Synergy

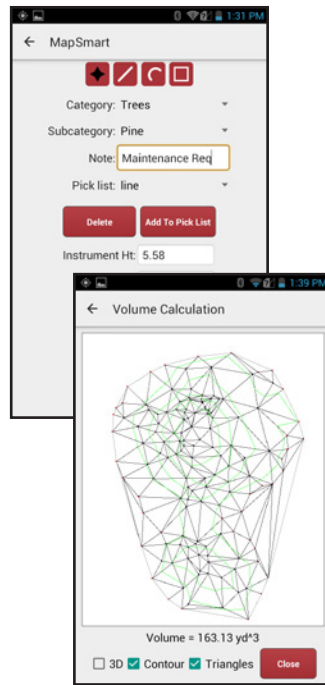
MapSmart reports can be transferred to any CAD-based software you already have. LTI does offer IMS Map360, a robust yet affordable desktop program.



Stockpile Volumes and Tonnage Data

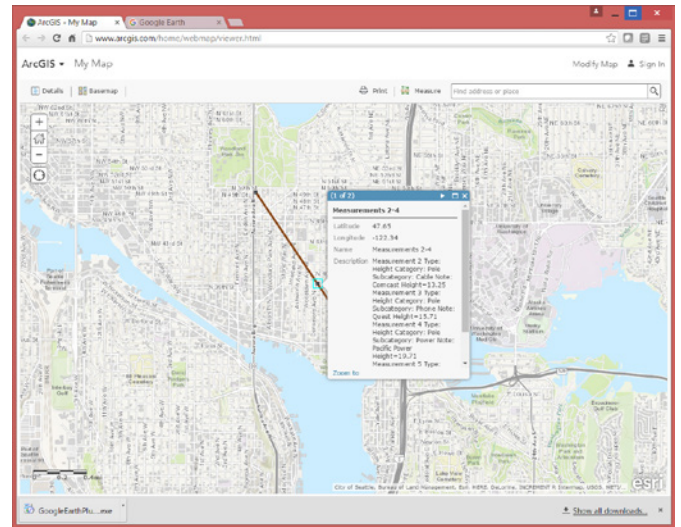
Easily measure and calculate the volume and tonnage of any material, even if it's stored in a bin or up against a wall.

- Eliminates guesswork, so you know exactly what you have on hand
- Measure as often as you want and stay in control of your own quantities
- Collects measurements from a safe location instead of requiring you to occupy loose and potentially dangerous material



Import Field Data Into Maps

MapSmart gives you the ability to export your georeferenced data and drop it into Esri's ArcGIS, Google Maps and other mapping applications.



REPOSITIONING
Easily pick up and move control points with a three-step traverse routine.



GET A CLOSER LOOK
Choose touch zoom in/out and panning or simplified icons on those days when gloves are a must.



SAVE AND SEND
Eliminate cables to transfer your data and just simply email it all.

Popular Hardware Packages

TruPulse® 360R

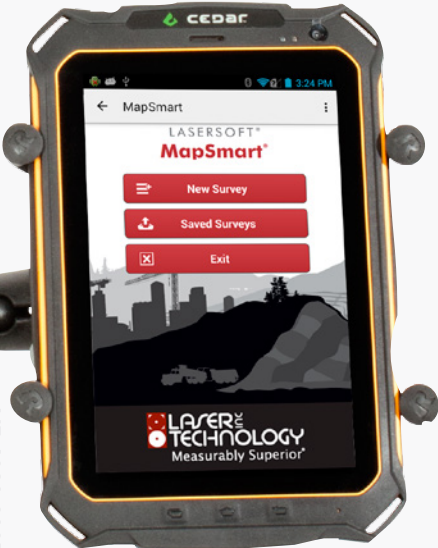
TruPulse® 200X + TruAngle

TruPoint™ 300



Range	3,280 ft (1000 m)	6,233 ft (1900 m)	1,000 ft (300 m)
Range Accuracy	±1 ft (30 cm) Typical	±1.6 in (4 cm) Typical	±0.04 in (1 mm) Typical
Inclination Accuracy	± 0.25° Typical	± 0.1° Typical	± 0.1° Typical
Power	(1) CR123A Battery	(1) CR123A Battery and (2) AA	Li-ion rechargeable
Azimuth/Angle Accuracy	AZ ± 1° Typical	ANG ±0.05°	ANG ±0.1°
Communication	Bluetooth®	Bluetooth®	WLAN
Mapping Method	Radial with Azimuth	Radial with Angle	

LTI Android Tablet Any 4.1 and newer Android tablet can run MapSmart



IP Rating	IP 67
Communication	Bluetooth and/or WLAN
GPS	Built in
Front/Rear Camera	2.0 MP/8.0 MP

MapSmart on Android Specifications

Operating Systems	Android version 4.1 and later
Connectivity	Bluetooth and/or WLAN
Compatible Lasers	TruPulse lasers with Bluetooth and the TruPoint 300
Supported Languages	English (a template is available for translation)