

Spectrum's Products are Engineered MISSION CAPABLE.

Capitalizing on dedicated research and development of aerospace instruments, Spectrum has a continuous record of successfully producing state of the art crash-resistant breakaway fuel valves, pressure switches, indicators and hydraulic subassemblies. Spectrum has earned 30 U.S. and foreign patents protecting its broad product line.



Spectrum's **PRESSURE SWITCHES** deliver performance, meeting virtually all switching requirements from 2" H₂O-18,000 psi pressure ranges.

A wide variety of configurations are available as well as selection of threaded ports and electrical connectors.

- Gauge • Absolute • Differential • Barometric • Vacuum



Spectrum's **INDICATORS** deliver reliability in the field, with pressure ranges from 2-10,000 psi.

Standard envelopes available as well as custom designs for specific requirements. Pressure port connections for MS, NPT or weld joints.

- Hydraulic • Pneumatic • E.C.S. Fuel
- Weight on Wheels (WoW) Applications



Spectrum's **Crash-Resistant BREAKAWAY VALVES** deliver state-of-the-art capability.

Frangible fittings to separate and seal fuel or other flammable fluids within hoses, tanks or other containers to prevent hazardous fluid flow due to crash, hard landings or inadvertent separation.

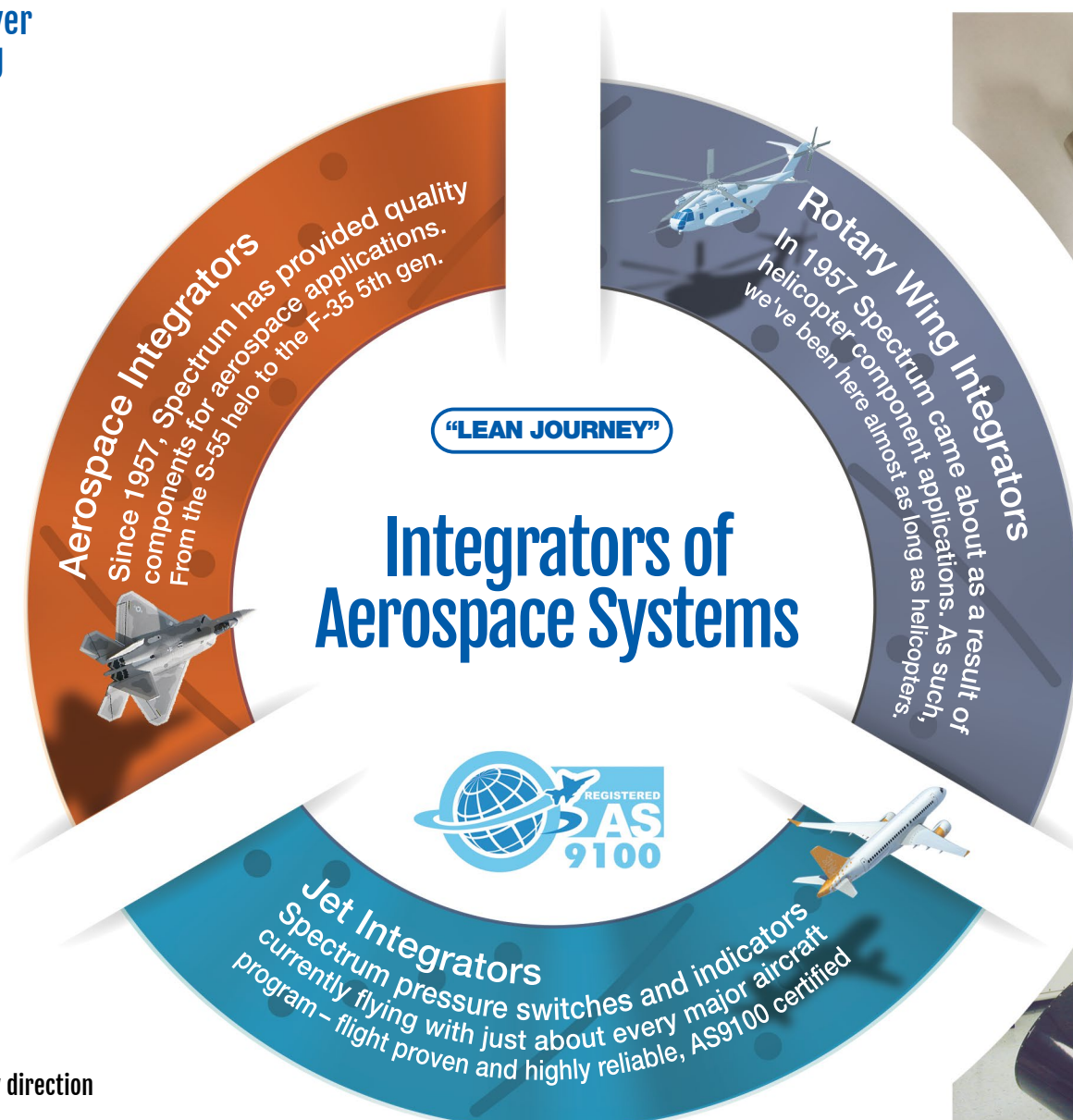
The only self-sealing breakaway valve coupling with pure Centrip® captive release:

- Flight proven since 1979
- Avoids flow loss from overlapped valve members
- Reacts with early closing upon partial separation
- Optimum response with circumferential separation from any direction
- No loose parts



Spectrum's **ACTUATORS** and **MANIFOLDS** reflect our commitment to design-build.

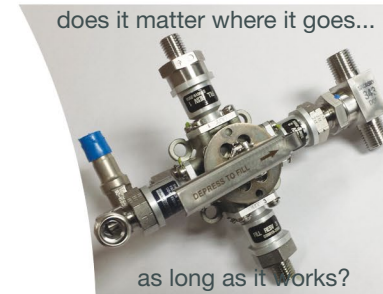
- Approved By More Than 27 Major OEMs
- 30,000 Sq. Ft. Facility Fully-Equipped With Modern Equipment
- Thoroughly Familiar With Aerospace Quality Requirements
- Flight Safety Part Approval, AS9100 Rev. C Certification
- AIRCRAFT • MEDICAL • AUTOMOTIVE • PETROLEUM



designed for air travel.

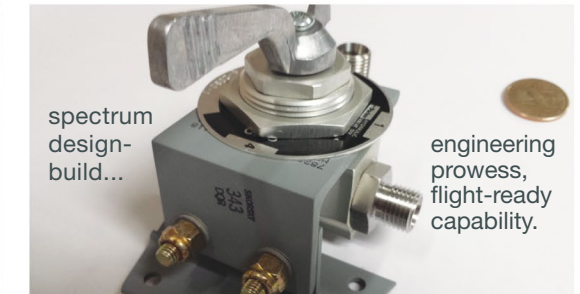


critical leg of the journey.



does it matter where it goes...

as long as it works?



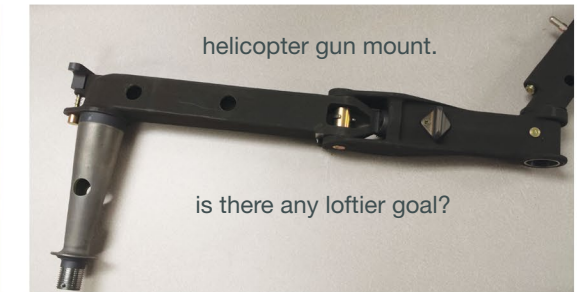
spectrum design-build...

engineering prowess, flight-ready capability.



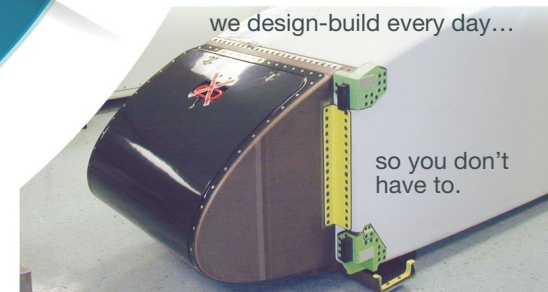
think for a second.

this fuel valve is faster.



helicopter gun mount.

is there any loftier goal?



we design-build every day...

so you don't have to.

Operation Offload™ represents a vision of the future, both for Spectrum and our marketplace.

Spectrum maintains a trained, experienced workforce well versed in aerospace sub-assemblies. We design the necessary test stands, tooling, etc. to assemble, inspect and provide a fully tested sub-assembly.



Ask your Spectrum sales representative, call **800.723.2626** or visit spectrumct.com

Our mission is to provide our customers with highly reliable technologically advanced products which will meet specified performance, reliability and delivery schedules. Our primary objective is a satisfied customer.



Spectrum Associates, Inc. is a leader in
quality manufactured fluid control instrumentation
serving the defense, aerospace and commercial industries.

aerospace engineering, pressure switches, subassemblies
fluid control instrumentation, breakaway valves,
indicators, design-build & more



Sensing Problems Before They Are™

183 Plains Road, Milford, Connecticut 06461 USA
(800) 723-2626
(203) 878-4618
info@SpectrumCT.com

www.spectrumct.com

