

Type:

Approved:

Fixture:

Project:

MINI COVELINE™



Mini CoveLine is a very slim profile luminaire, less than 1 inch tall, that's perfect for smaller spaces needing ample light. **Mini CoveLine** is available in 1 ft or 4 ft lengths with 27K, 3K, 35K or 4K color temperatures. The housing is constructed of extruded aluminum with tooled end caps and is IP20 rated for interior use only. Features Plug N' Play connectors for easy installation. Standard bracket has 180° rotation capability for adjusting beam direction. Flicker free dimmable to 0% full brightness with ELV trailing edge dimming.

SPECIFICATION

color temperature	2700K	3000K	3500K	4000K	
beam spread	120° (standard)				
lumen output	398 per foot	442 per foot	453 per foot	487 per foot	
LEDs per foot	14				
color consistency	3-step MacAdam Ellipse / CRI 87				
lifetime	> 70,000 hours / L70				
input voltage	Universal 120–277V AC				
power consumption	5W /ft max @ (120V), 6.5 /ft max @ (277V)				
dimensions [L x W x H]	12" x 1.28" x .875", 48" x 1.28" x .875"				
weight	.75 lbs. per foot				
housing	extruded aluminum housing with tooled end caps				
lens	etched polycarbonate				
mounting	surface mounting with (180° adjustable bracket)				
operating temperature	-10°C to 40°C				
junction temperature	75°C @ T ^a 25°C				
interface	dimmable to 0% , (ELV) electronic low-voltage trailing edge, synchronized w/ soft shut-off, available 0-10V Dim Module (one module per run)				
power supply	integral Class II, electronic high-power factor 94%				
certification	ETL / cETL or CE / Conforms to UL Std 1598 / Certified to CSA Std C22.2 No. 250.0				
standards	UL-Class I / IES LM-79 / LM-80				
environment	dry, interior location / IP 20				
warranty	5 year limited warranty (refer to website for details)				

Due to continuous development and improvements, specifications are subject to change without notice.

CATALOG NUMBER

EXAMPLE: MC-1-35K-120

MC					
model	length	temperature	optics		
MC MINICOVE	1 304 mm [12 in.]	27K 2700K	120 120° x 120° beam (standard)		
	4 1219 mm [46.8 in.]	3K 3000K			
		35K 3500K			
		4K 4000K			

Accessories (Indicate the quantity needed for each item.)

REQUIRED: Starter Cable (SC6) and Terminator Cap (TCAP) for every run.

Maximum Run Length:
80 feet (120v) and 120 feet (277v)

_____ SC6 6 ft. Starter Cord

_____ EC06 6 in. Extension Cord

_____ EC24 24 in. Extension Cord

_____ TCAP Terminator Cap

_____ EC12 12 in. Extension Cord

_____ EC60 60 in. Extension Cord

_____ 10VELVDIM 0-10V ELV Dim Converter Module (1 module per run)

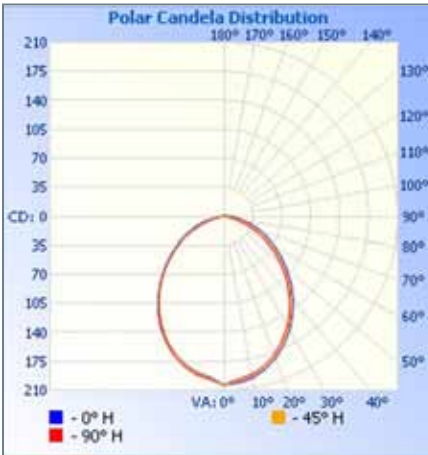
_____ MC-10VELVDIM 0-10V ELV Dim Converter Module w/Enclosure (1 module per run)

PHOTOMETRY

MC-1-120-4K-120°

Zonal Lumen Summary

Illuminance at a Distance



Zone	Lumens	% Luminaire
0-30	152	31%
0-40	242	50%
0-60	399	82%
60-90	85	17%
70-100	38	8%
90-120	4	1%
0-90	484	99%
90-180	4	1%
0-180	487	100%

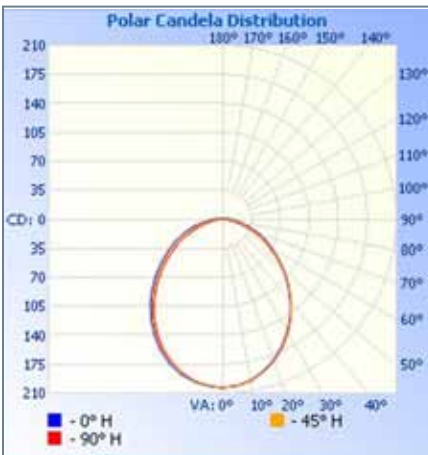
Efficiency Total: 99%



MC-1-120-3K-120°

Zonal Lumen Summary

Illuminance at a Distance



Zone	Lumens	% Luminaire
0-30	132	30%
0-40	210	48%
0-60	353	80%
60-90	86	19%
70-100	40	9%
90-120	4.5	1%
0-90	437	99%
90-180	4	1%
0-180	442	100%

Efficiency Total: 99%

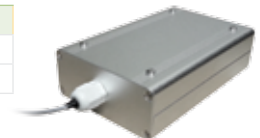


PERFORMANCE

Model	Connected	Delivered Lumens			
	Wattage	2700K	3000K	3500K	4000K
MC-1	4.9	398	442	453	487
MC-4	19.6	1592	1768	1812	1948

ACCESSORIES

DIMMING 0-10V CONVERTER (1 module per run)	
10VELVDIM	0-10V ELV Dim Module
MC-10VELVDIM	0-10V ELV Dim Module with Enclosure



RECOMMENDED ELV DIMMING CONTROLS - (sold by others)

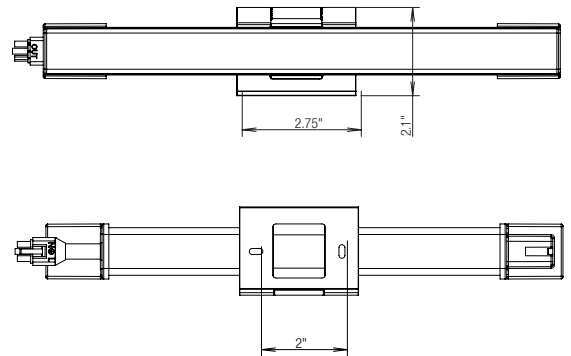
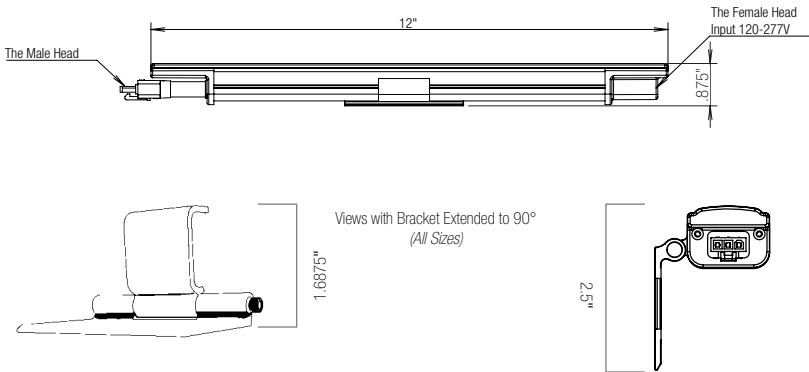
Model	Description
DELV-300P	Lutron Diva Dimmer
SELV-300P	Lutron Skylark Dimmer
6615-P	Leviton Decora Dimmer

The listed dimming controls are recommended for this product as meeting FC Lighting standards.

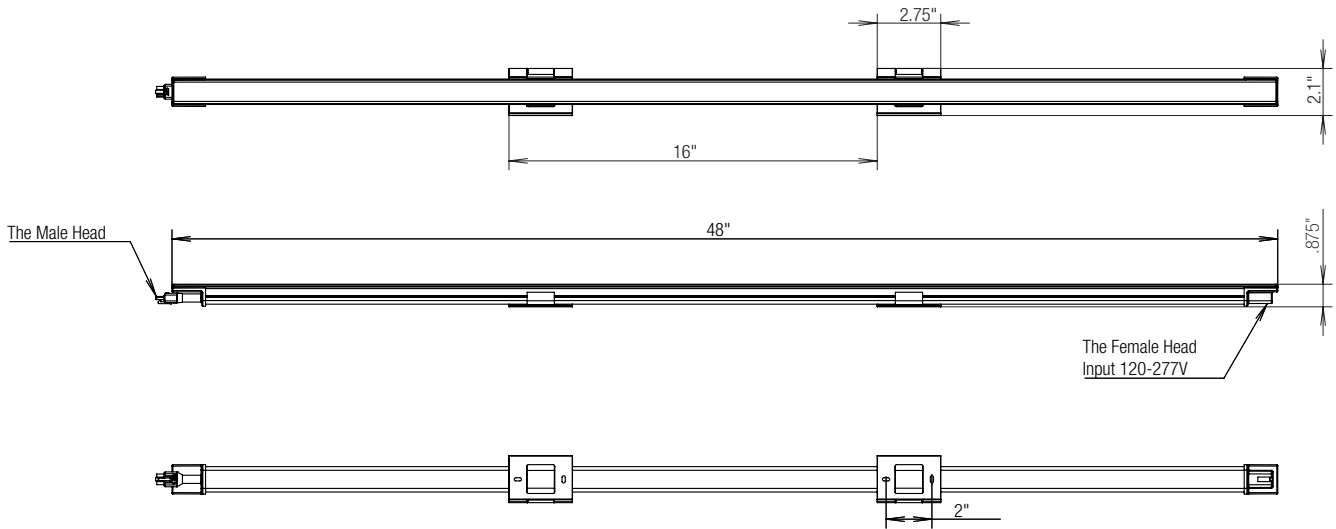
DIMENSIONS (1 foot / 12" and 4 foot / 48")

1' and 4' Lengths scalable for larger applications.

MC-1 - 1' Mini CoveLine



MC-4 - 4' Mini CoveLine



CONNECTORS



- Extension Connectors
- 6", 12", 24" & 60" lengths

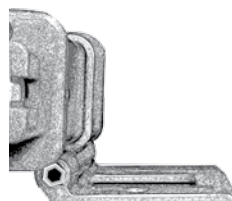


- Terminator Cap (TCAP)
- Snaps to lock

TCAP - Required for proper installation.

STANDARD ADJUSTABLE BRACKET

- 180° Standard Adjustable Bracket
- Step adjustments at 15° increments
- Locks in position with hex screw



Bracket Hex Screw to lock position

